

Model 3/Y 7.5-inch Rear Intelligent Entertainment System Installation Instruction

①	7.5-inch screen	⑥	OBD adapter cable and driver/passenger seat adapter cable
②	Screen frame	⑦	Air vent bracket
③	Rear AC lower panel	⑧	Screen adapter cable
④	Control box	⑨	screws
⑤	Pry bar		

1. Tools required for installation

Plastic pry bar; Small Phillips screwdriver; Phillips screwdriver

2. Installation precautions

Before installation, it is necessary to remove the original rear air vent

Note: To expedite the installation process, please carefully read this instruction manual.

Packing List



Inspection Before And After Installation

NOTE

1. Before installation, please check if the product list is complete and free of damage.
2. The installation instructions may differ slightly from actual operation. If there are any discrepancies, please refer to the actual situation or contact us.
3. Warning: Do not disassemble any components on your own. Any improper operations are not covered under warranty.
4. Please watch the installation video and instruction manual before installing the product.
5. Before turning on the product after installation, please confirm that the installation and wiring are correct.
6. Check if the installed product functions properly. If there are any issues, please check if the plug is securely inserted.
7. Check if the original vehicle functions are working properly. If there are any issues, please check if the plug is securely inserted.
8. Please do not install the product if you receive a damaged item. Please take photos immediately and provide them to our after-sales team for confirmation. Photos should be provided that include all parts of the product and can display the damage. (If the product is notified of the damage after installation, claims and reissues will not be accepted, and you will need to purchase the parts again at your own expense.)

Installation Step



1. On the large screen, select "Power Off" to turn off the power



2. Use a pry bar to remove the lower panel of the rear air vent

Installation Step



3. Remove these two screws to take out the air vent baffle



4. Remove the rear air vent

Installation Step

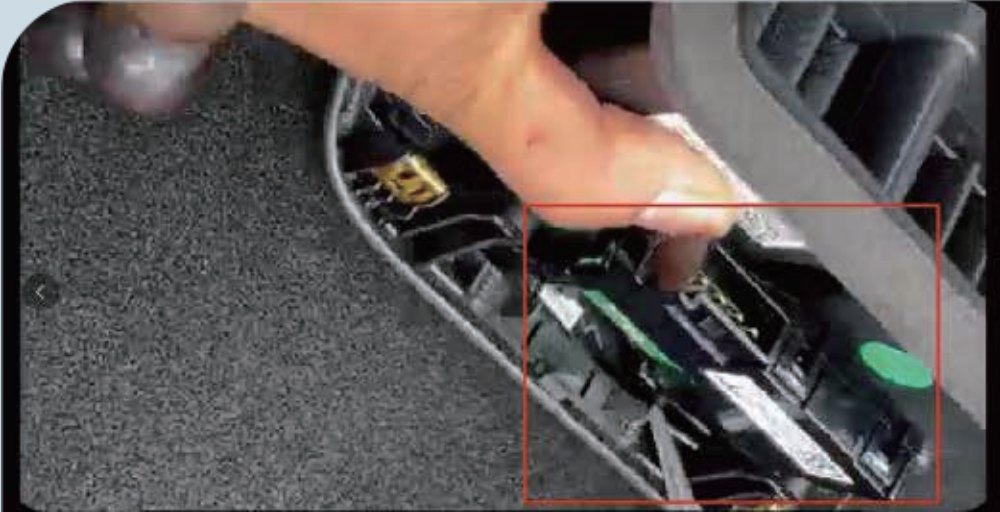


5. Unplug the power cable of the rear air conditioning

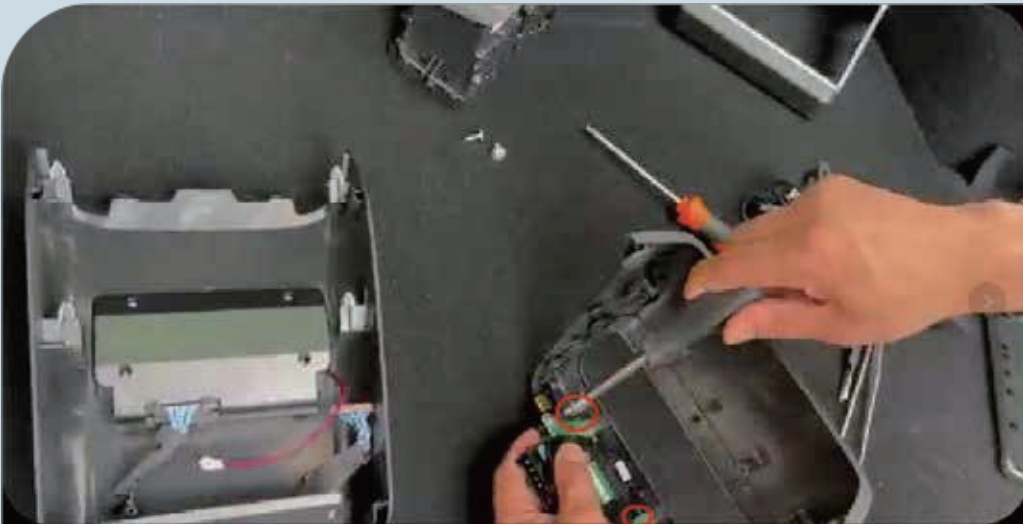


6. Remove the two screws of the rear air conditioning vent

Installation Step



7. Remove the original vehicle TPCY-C charging box



8. Unscrew these two screws to remove it

Installation Step



9. Assemble the removed charging module onto the corresponding mold



10. First, align the charging module in position and screw in the screws partially. Then, tighten the remaining screws to secure it in place

Installation Step



11. Connect the screen adapter cable properly and route it along this path (There is a locking pin. Please be careful when inserting the cable)

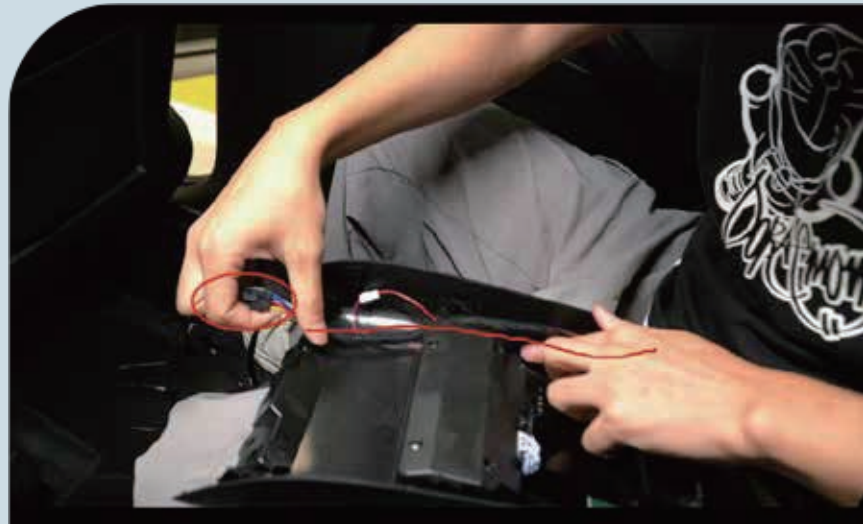


12. First, snap the two clips on the bottom into place, and then tighten one screw on the top to secure it

Installation Step

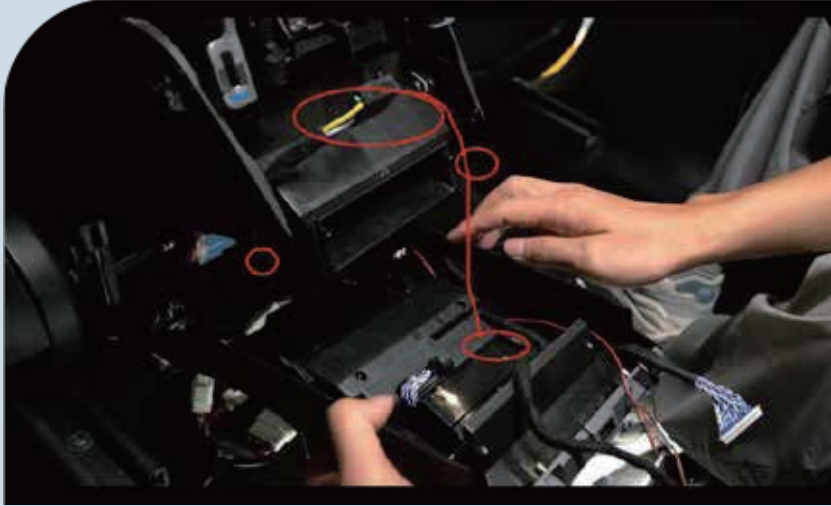


13. Connect the speaker wires



14. After connecting the plug, route the wire along this path

Installation Step

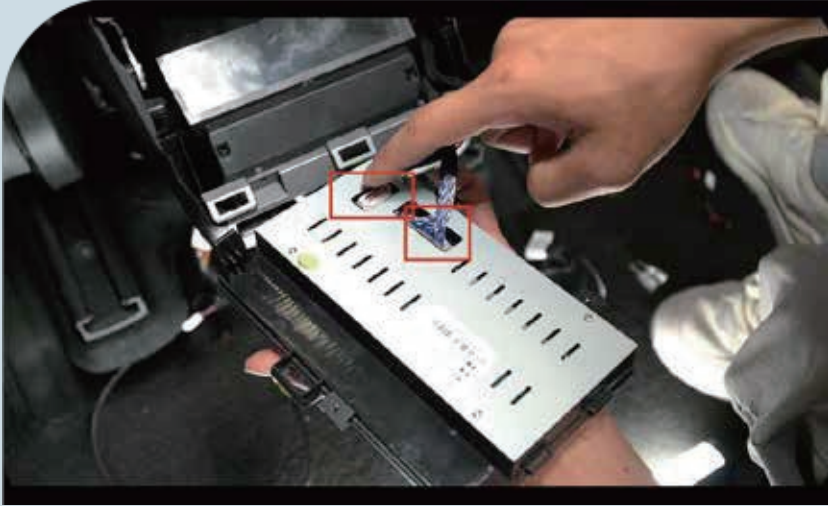


15. Insert the plug into the socket indicated in the connection diagram, aligning it with the corresponding holes, and secure it (Be sure to fasten it tightly)



16. Tighten these two screws to secure it in place

Installation Step



17. Plug in these two connectors

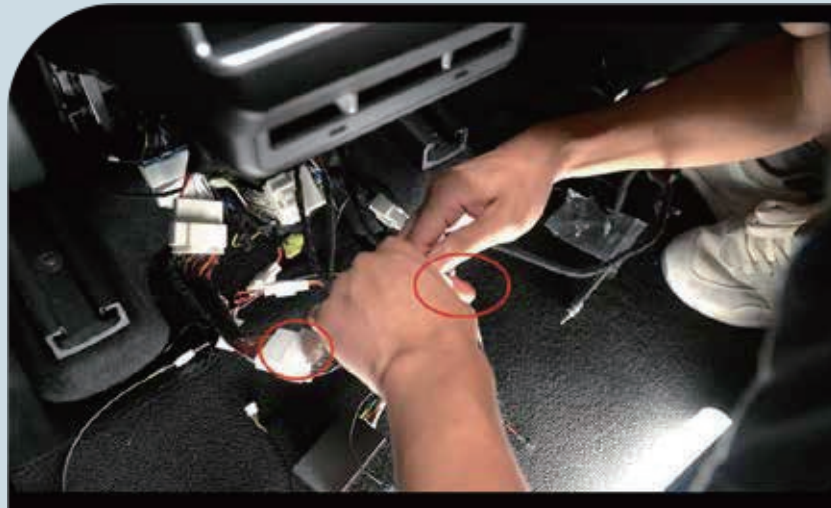


18. Tighten these three screws to secure it in place

Installation Step



19. Fix 4 holes by fastening them in place



20. Connect the original vehicle's OBD plug

Installation Step



21. Route the driver's seat adjustment wire along the seat position (Make sure to hide the wire properly)



22. Remove the screws of the seat adjustment panel, detach the panel, and unplug the seat adjustment connector

Installation Step



23. Connect the seat adjustment wire from the original car to the driver's seat adapter cable, same operation to the passenger seat



24. Restore all parts of the original car

Effect Display



HD full Embedded screen



Common Troubleshooting Guide

Trouble	Reason	Solution
Black screen (screen not turning on after installation)	The adapter harness is not properly connected	Re-plug the connector
	Main unit plug is not reconnected within 5 minutes after unplugging	Connect the wiring harness, lock the car for 2 hours, keep your phone and remote key within a distance of more than 20 meters from the car, and check if the screen can be turned on after 2 hours
Bluetooth cannot connect	Not connected to the corresponding host Bluetooth	Re-search and connect to the correct Bluetooth
How to activate the massage function for the driver's seat?	Need to enter the massage mode through the original car steering wheel button	To activate the massage mode, long press the left side of the steering wheel button for 5 seconds. To turn it off, long press the left side of the steering wheel button again for 5 seconds.
Why isn't the seat massage working?	The original car does not come with lumbar support	Please confirm if the original car has a lumbar support
How to differentiate Type-C interfaces?	Retain the use of the original car's USB	