

1. Tools required for installation

Plastic pry bar; Small Phillips screwdriver

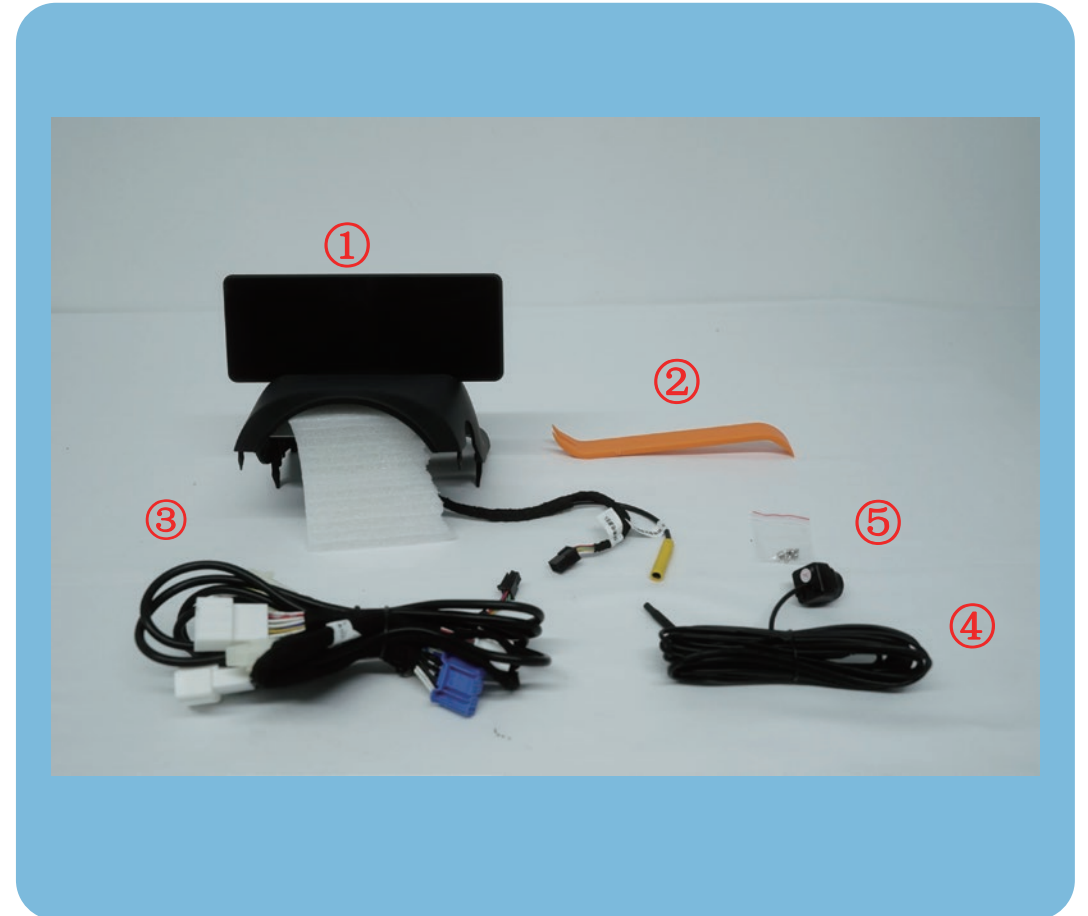
2. Installation precautions

Verify the version and power off the screen before installation

Note: To expedite the installation process, please carefully read this instruction manual.

①	H6 screen	⑤	Fixing screws
②	Plastic pry bar	⑥	
③	Harness adapter	⑦	
④	Front forward camera	⑧	

Packing List



NOTE

1. Before installation, please check if the product list is complete and free of damage
2. The installation instructions may differ slightly from actual operation. If there are any discrepancies, please refer to the actual situation or contact us.
3. Warning: Do not disassemble any components on your own. Any improper operations are not covered under warranty.
4. Please confirm the version information and turn off the vehicle power before installing the product.
5. Please watch the installation video and instruction manual before installing the product.
6. Before turning on the product after installation, please confirm that the installation and wiring are correct.
7. Check if the installed product functions properly. If there are any issues, please check if the plug is securely inserted.
8. Check if the original vehicle functions are working properly. If there are any issues, please check if the plug is securely inserted.
9. Please do not install the product if you receive a damaged item. Please take photos immediately and provide them to our after-sales team for confirmation. Photos should be provided that include all parts of the product and can display the damage. (If the product is notified of the damage after installation, claims and reissues will not be accepted, and you will need to purchase the parts again at your own expense.)

Installation Steps - H6 Screen

Testlaunch



1. Use a pry bar to pry open the left and right small side panels.



2. Use a pry bar to pry open the middle trim panel

Installation Steps - H6 Screen

Testlaunch



3. Use a pry bar to pry open this side trim panel



4. Pry open this trim panel after opening one round buckle.

Installation Steps - H6 Screen

Testlaunch



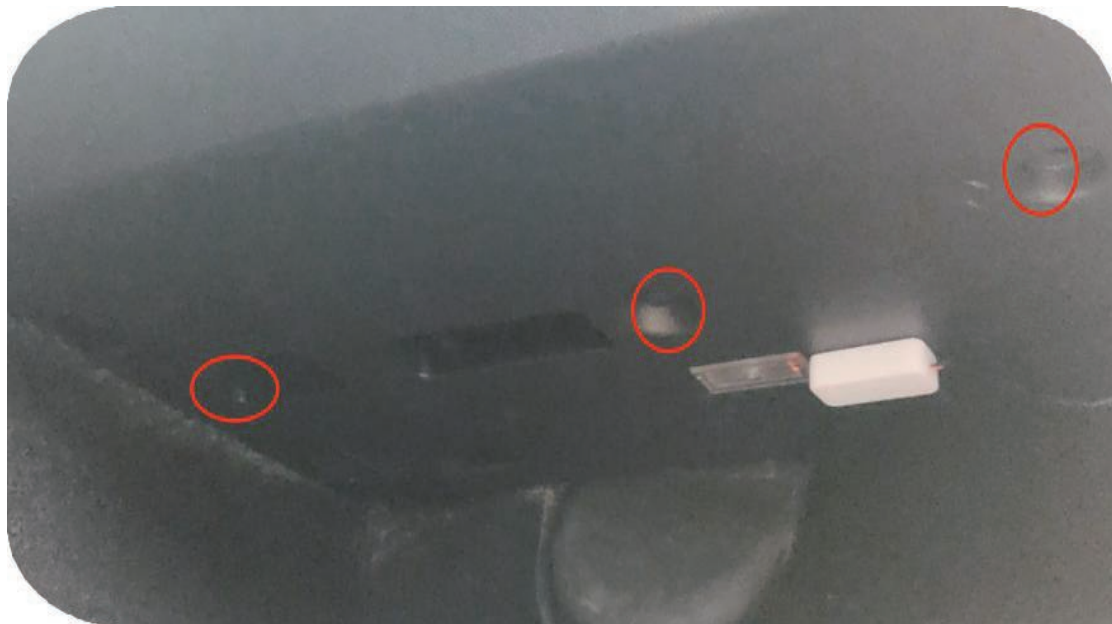
5. Use a pry bar to pry open and remove the original cover plate from the indicated position in the image. Then, install the instrument screen in its place.



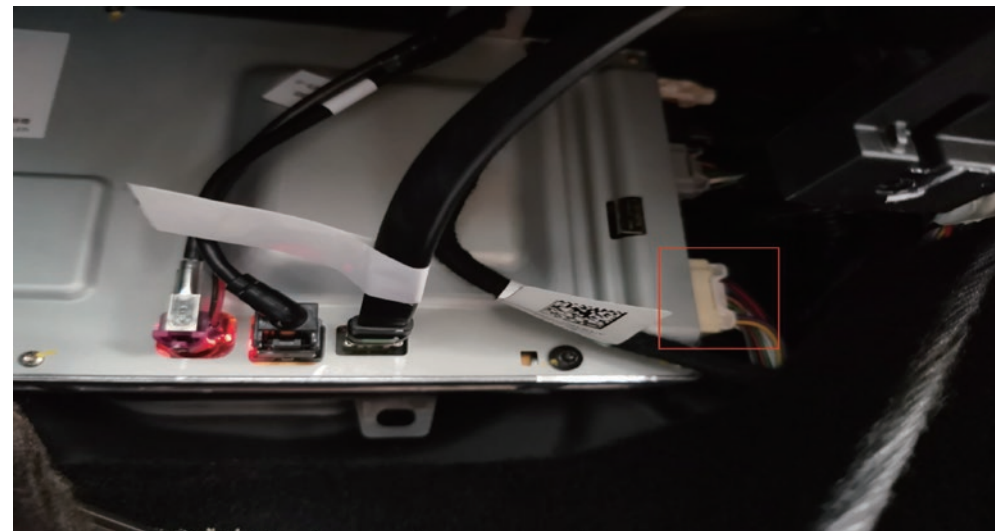
6. Connect the power cable and adapter cable of the screen, and route the wires along the wood trim panel to the footwell area.

Installation Steps - H6 Screen

Testlaunch



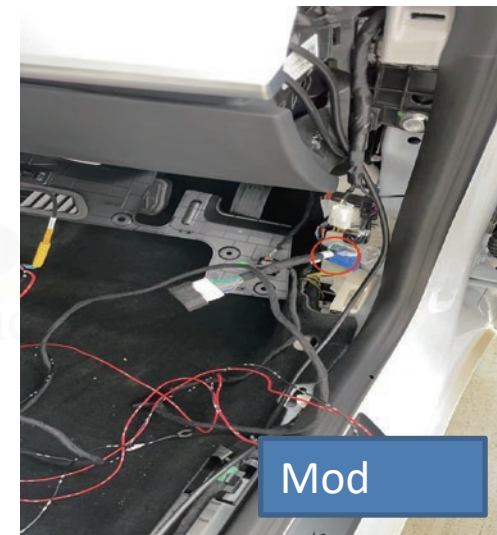
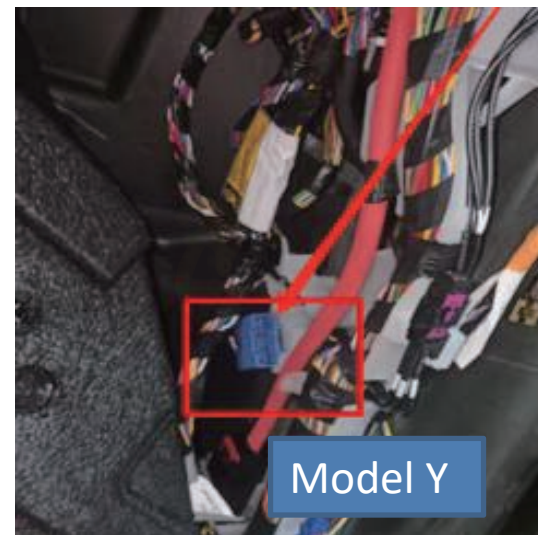
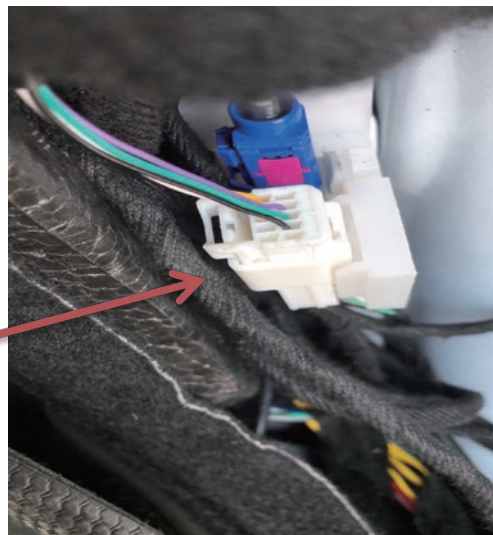
7. Remove the cover from the passenger footwell.



Intel Version:

8. Find the second gray plug above the passenger footwell and connect the plug adapter to it.

Installation Steps - H6 Screen



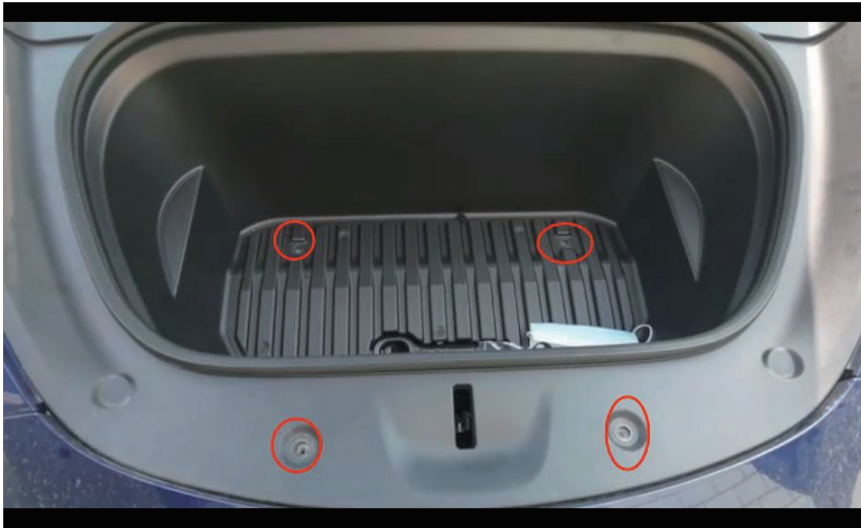
AMD Version:

1. Connect the plug to the white plug located under the right front seat A-pillar

2. Connect the plug to the blue plug located under the right front seat A-pillar.

Installation Steps - Front Forward Camera

Testlaunch



Installation steps for front camera:

1. Remove these four screws.



2. To remove the cover plate of the air conditioning vent, simply unclip the two side fasteners and pull it out.

Installation Steps - Front Forward Camera

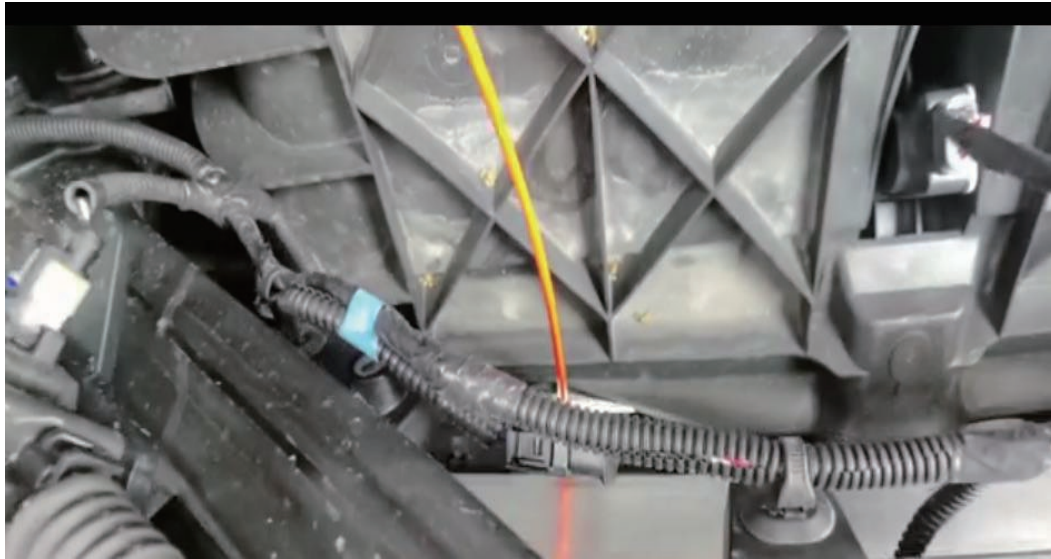


3. After removing the cover plate, take out the retaining clip.

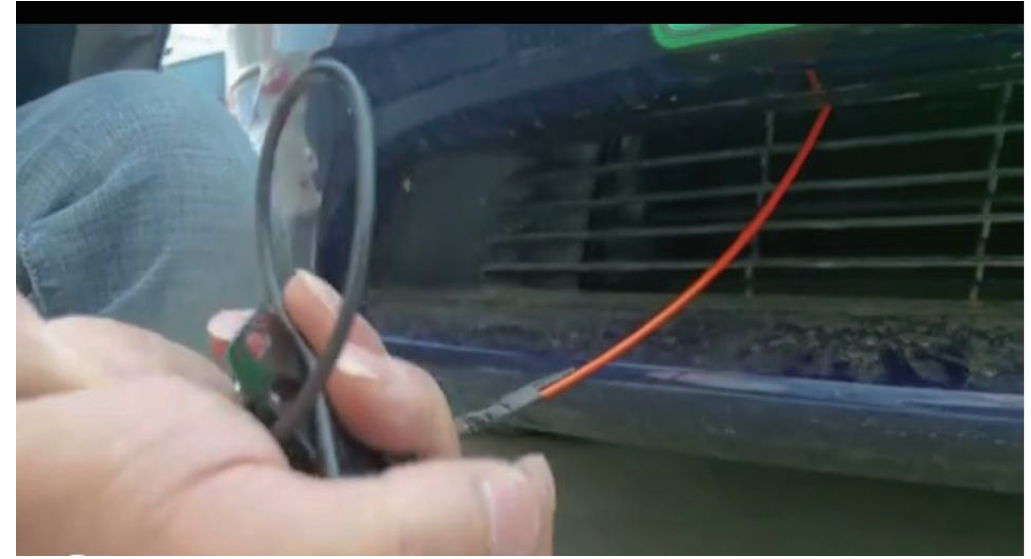


4. After unplugging this connector, remove the Frunk cover

Installation Steps - Front Forward Camera



5. Start routing the wires by using a fish tape to thread the wires from the grille below the license plate into the engine compartment.



6. Wrap the camera cable around the fish tape and thread it into the engine compartment.

Installation Steps - Front Forward Camera

Testlaunch



7. Install the camera bracket in the correct position and tighten the screws once it is aligned properly.



8. Thread the fish tape from the rubber plug near the air conditioning vent into the driver's seat.

Installation Steps - Front Forward Camera

*Tesla*launch



9. Once the fish tape is visible from the passenger side, pull it inside



10. Connect the camera cable and route it along the wood trim panel. Once the wiring is in place, restore the vehicle to its original condition.