



TOPWC32

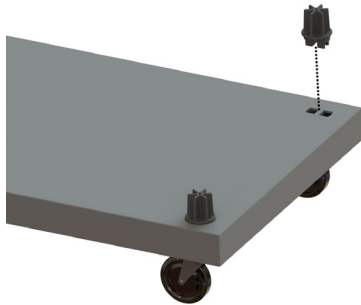
Step 1

Fully insert **Caster Adapters** into sockets on the bottom of the **Panel**, then insert **Casters** into **Caster Adapter** slots



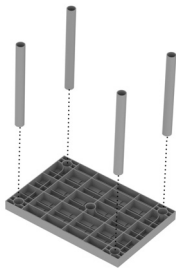
Step 2

Insert **Internal Leg Connectors** into sockets on top of the **Panel**



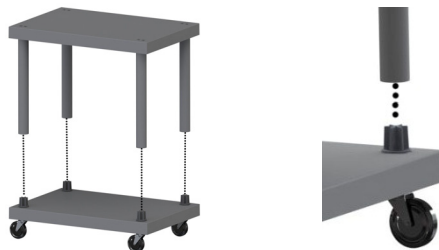
Step 3

Fully insert **24 Inch Legs** into sockets on the bottom of additional **Panel**

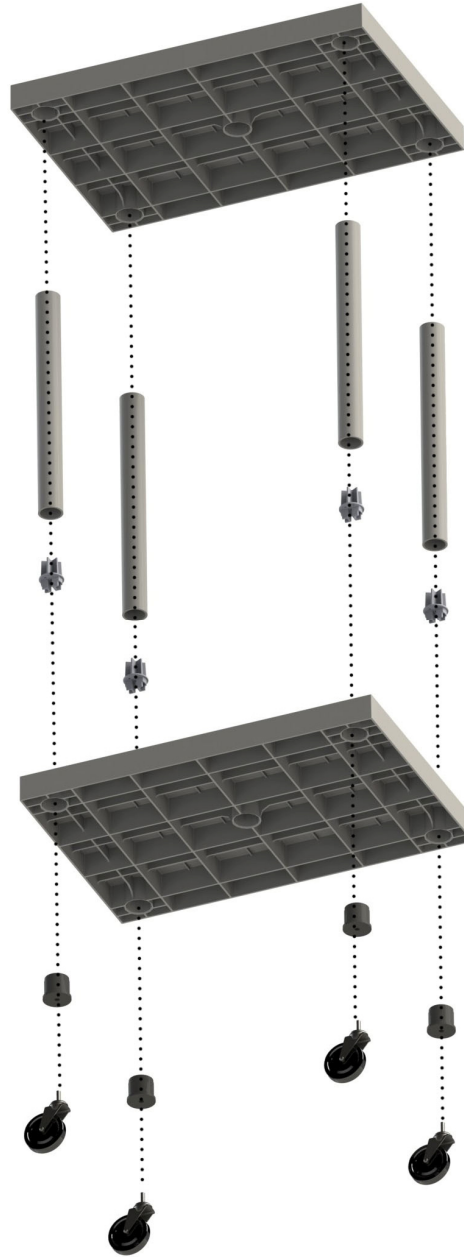


Step 4

Place second level over first level, inserting **Internal Leg Connectors** into legs



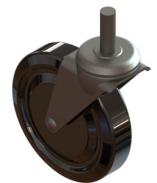
Exploded View



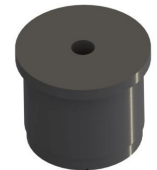
Items List



Internal Leg Connector



Caster



Caster Adapter



24 Inch Leg



Panel

Step 5

Repeat

Repeat Steps 2 through 4 for each additional shelf level
(Requires TOPWC32A Add-On Shelf)

Complete