

# Assembly Instructions

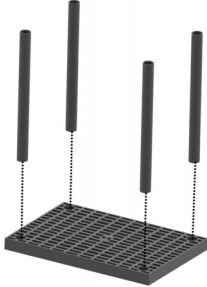
## Long Handled Tool Cart



TOPTC32

### Step 1

Fully insert **30 Inch Legs** into sockets on the bottom of the **Grid Panel**



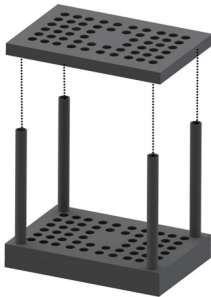
### Step 2

Slide **Middle Panel** over legs until it rests on top of the **Grid Panel**



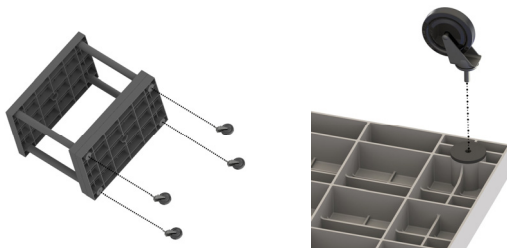
### Step 3

Fully insert **Top Panel** over the **30 Inch Legs**

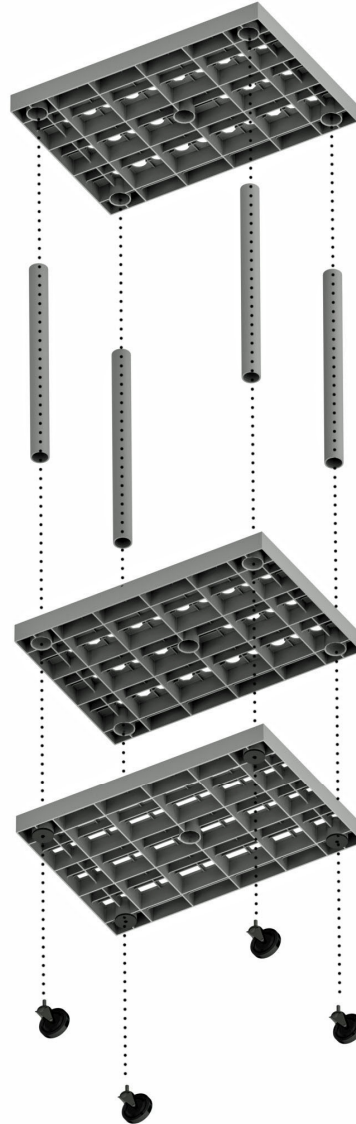


### Step 4

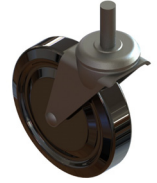
Insert **Casters** into slots located below the **Bottom Panel**



### Exploded View



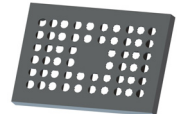
### Items List



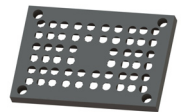
Caster



30 Inch Leg



Top Panel



Middle Panel  
(4 Corner Holes)



Bottom Panel  
Grid