

**Soulphase LED Technology LLC.**  
520 South Claudina Street  
Unit G  
Anaheim, California 92805  
Phone: (714) 533-7446  
Fax: (714) 409-0525  
Email: support@soulphase.com  
Website: www.soulphase.com

## **PC-Bluetooth & PC-Cable Manual 1.3**

**IMPORTANT NOTICE:** Follow this manual step by step to complete the programming process. **For bluetooth users, do not make any changes to the pins on the bluetooth device unless advised by the technician.**

**Your model number is as followed,**

1st Digit	2nd Digit	3rd Digit	4th Digit	5th Digit	6th Digit
<div></div>	<div></div>	<div></div>	<div></div>	<div></div>	<div></div>

(You will be using this model number during programming. Ignore the "X" digit.)

## **Setup and Programming Steps**

### **For Bluetooth Users,**

1. Install Bluetooth device driver for Windows (Page 2-6)
2. Install Eyetv programming software (Page 7)
3. Pair Sign & PC (Page 7)
4. Programming (Page 8-10)

### **For RS232 Cable Users,**

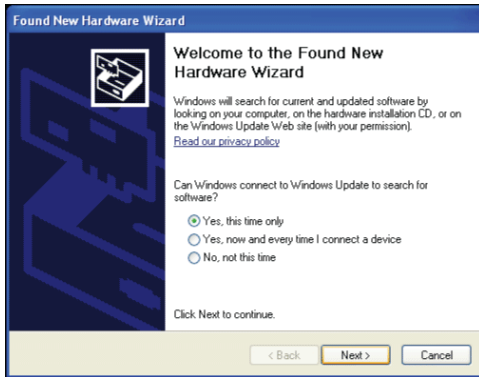
1. Install the driver for RS232 to USB converter (**For installing the RS232 to USB converter driver, follow the instruction manual in the USB Converter Driver folder in the Soulphase CD**)
2. Install Eyetv programming software (Page 7)
3. Pair Sign & PC (Page 7)
4. Programming (Page 8-10)

## **Page Index**

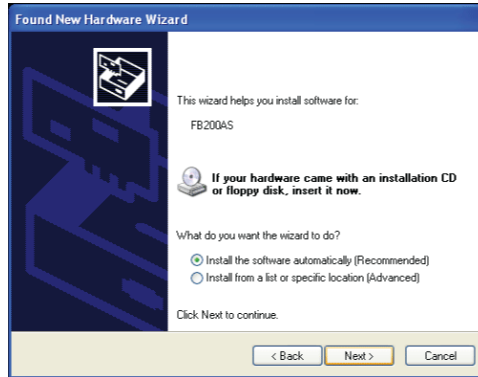
- Page 1 - Index
- Page 2 - Installing Driver for Windows XP
- Page 3 - Installing Driver for Windows 7 and Vista 1of2
- Page 4 - Installing Driver for Windows 7 and Vista 2of2(1)
- Page 5 - Installing Driver for Windows 7 and Vista 2of2(2)
- Page 6 - Installing Driver for Windows 7 and Vista 2of2(3)
- Page 7 - Installaig EyeTV Software and Pairing Sign & PC
- Page 8.- Programming(1)
- Page 9 - Programming(2)
- Page 10 - Programming(3)

# Bluetooth Driver Installation (Firmtech) For Windows XP

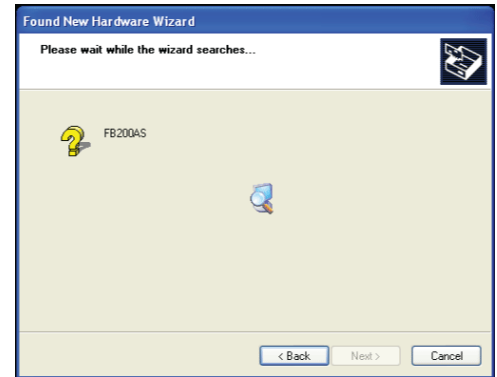
1. Plug in the power cord for the sign.
2. Insert the Firmtech CD. If the auto start window appears, close it.
3. Plug in the Bluetooth device to PC and follow the instruction below.



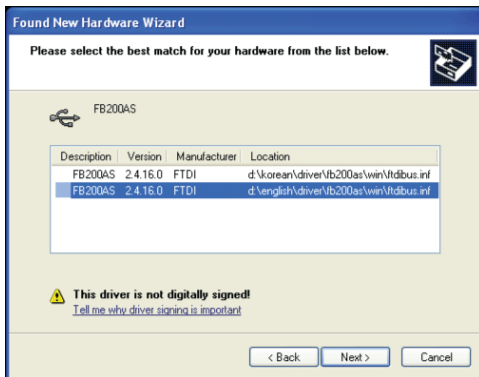
4. Choose "Yes, this time only", then click "Next".



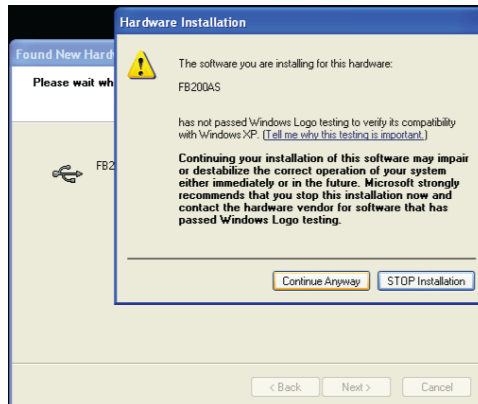
5. Choose "Install the software automatically (Recommended)", then click "Next".



Installing..(Wait)



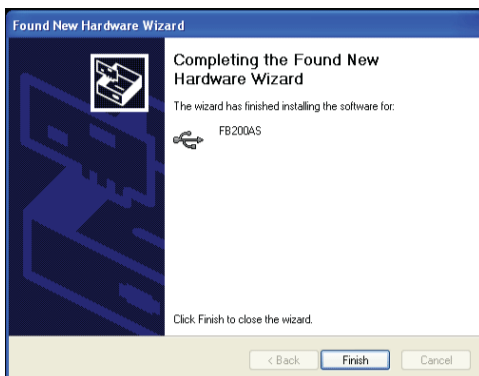
6. When this window appears, select "English", then click "Next".



- 7.. When this window appears, click "Continue Anyway"



Installing..(Wait)



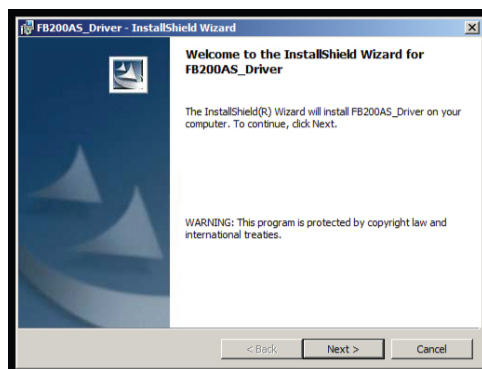
- 8.. Click "Finish"

## **IMPORTANT NOTICE**

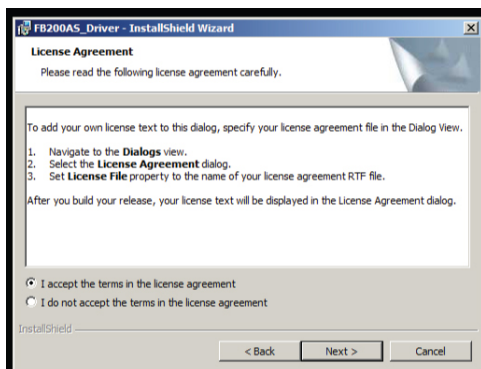
After the driver installation, wait about a minute to see if the "Welcome to the Found New Hardware Wizard" appears again. If it does, repeat the same procedure. When the installation is complete, reboot your PC.

# Bluetooth Driver Installation (Firmtech) For Windows 7 and Vista (Part 1 of 2)

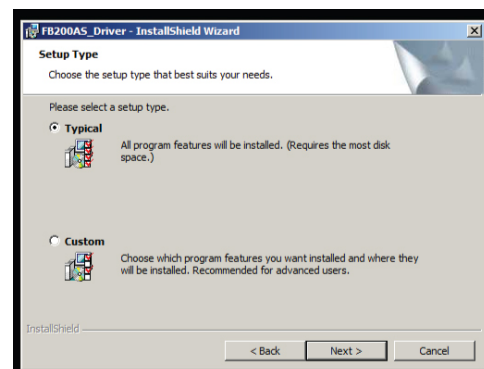
1. Plug in the power cord for the sign.
2. Insert the Soulphase CD. Open the Bluetooth Firmtech folder.
3. Double click FB200AS\_driver application file.
4. Follow the instruction below.



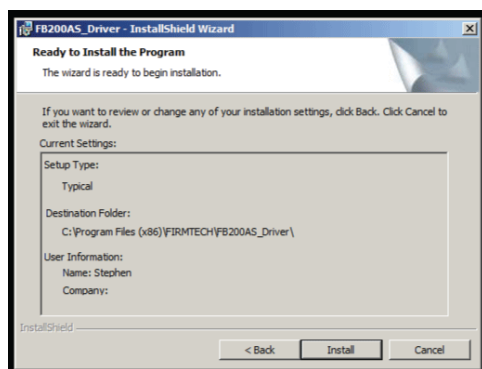
5. Click "Next".



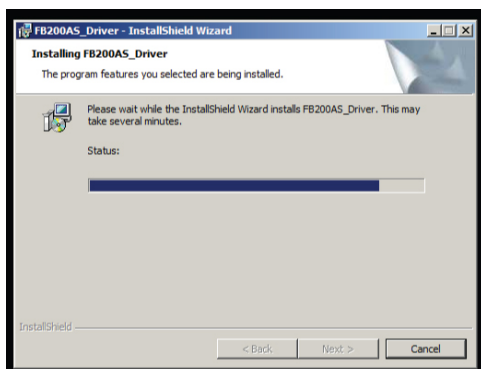
6. Choose "I accept the terms in the license agreement" then click "Next".



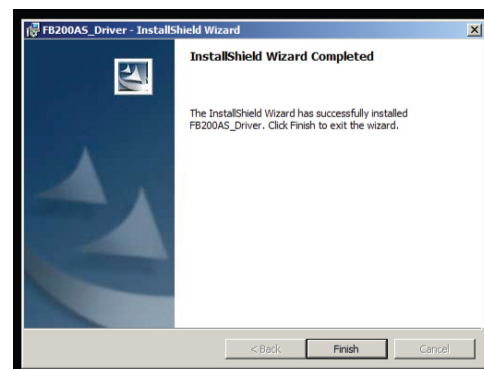
7. Choose "Typical" then click "Next".



8. Click "Install". \*\*Remember the Destination Folder. You will be using this folder later in the installation process.



Installing..(Wait)

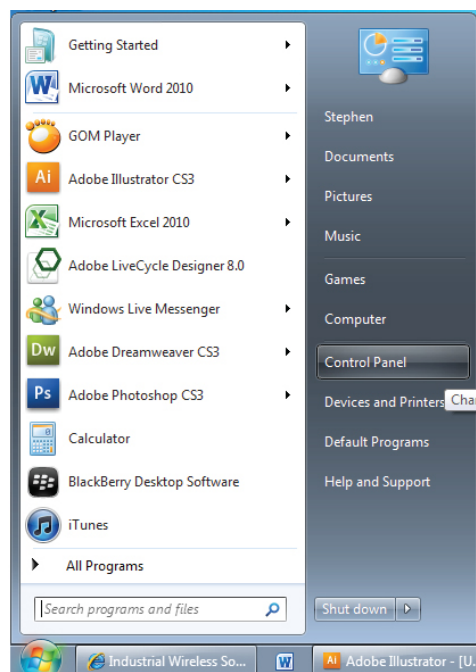


9. Click "Finish".

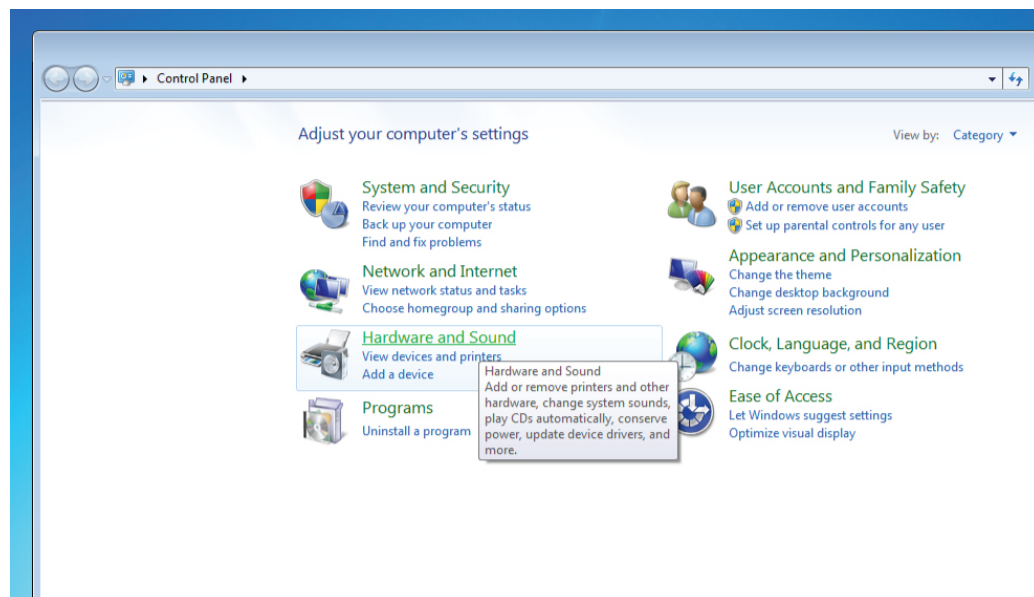
**The driver installation is not completed yet. Plug in the Bluetooth device to your PC now and proceed to the next page.**

# Bluetooth Driver Installation (Firmtech)

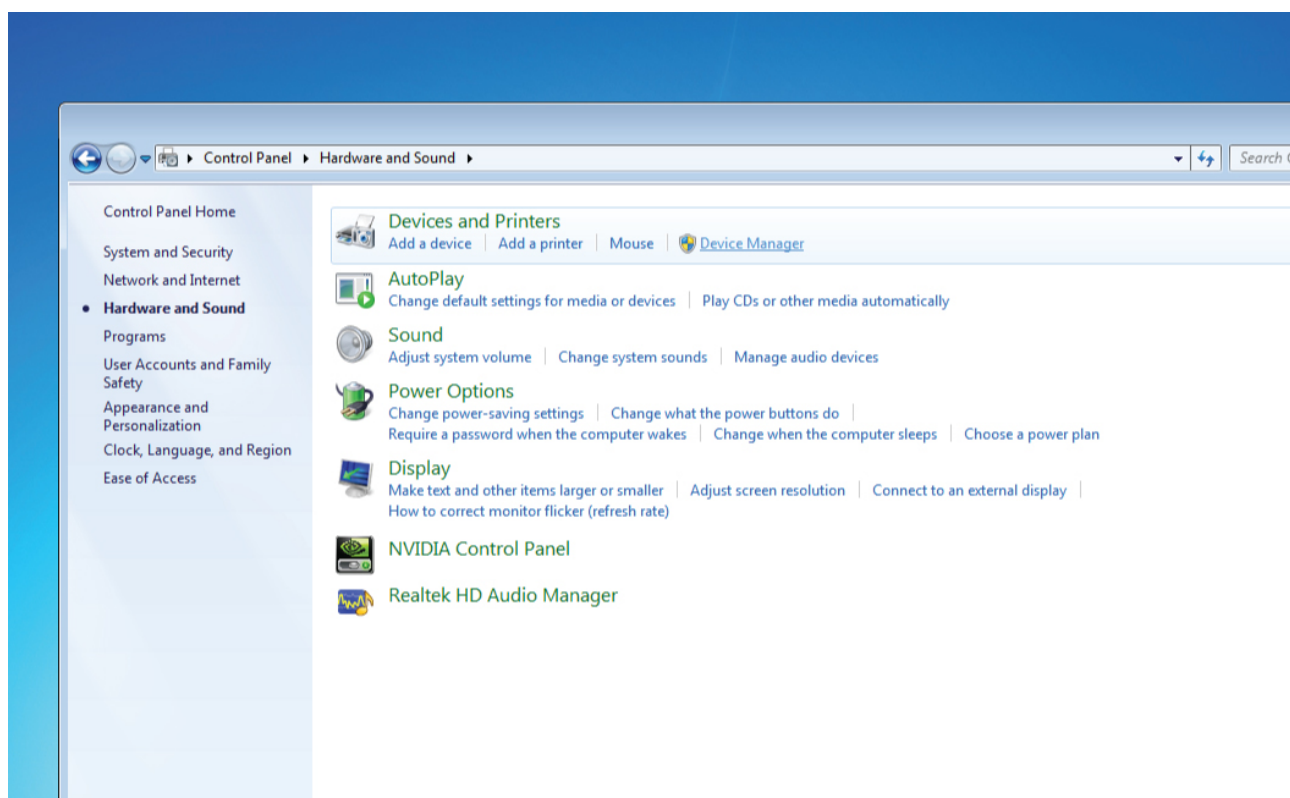
## For Windows 7 and Vista (Part 2 of 2)



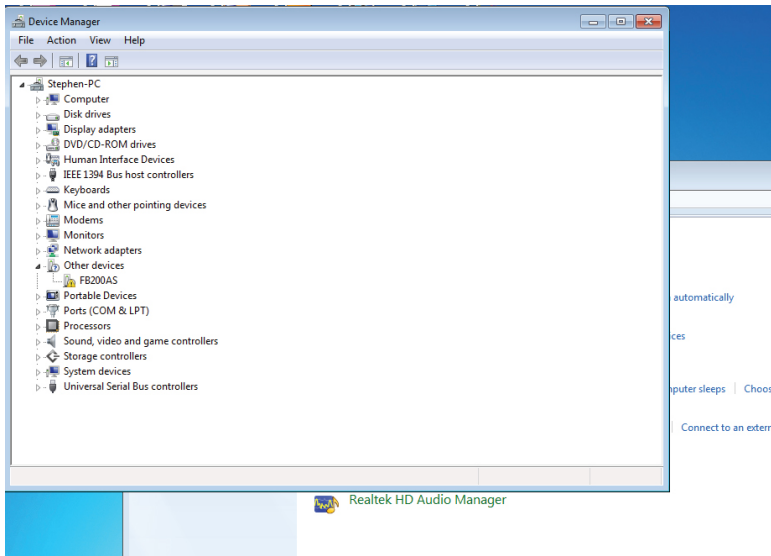
2. Click Start Window Icon then click "Control Panel".



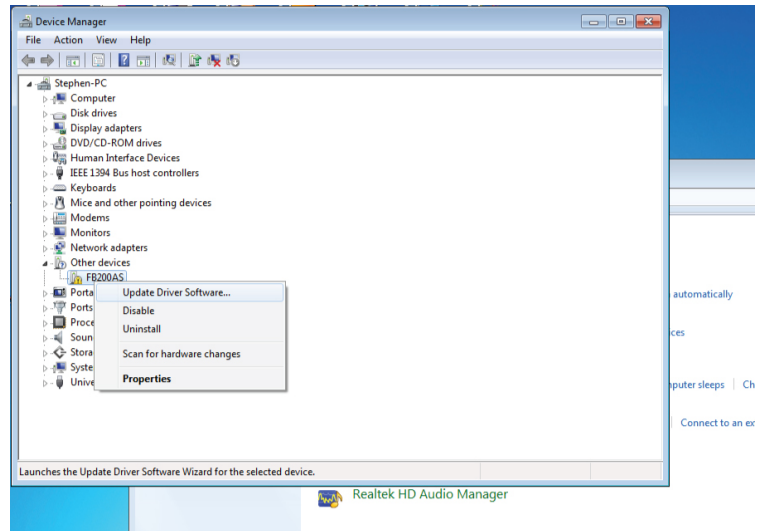
3. In the Control Panel, click "Hardware and Sound".



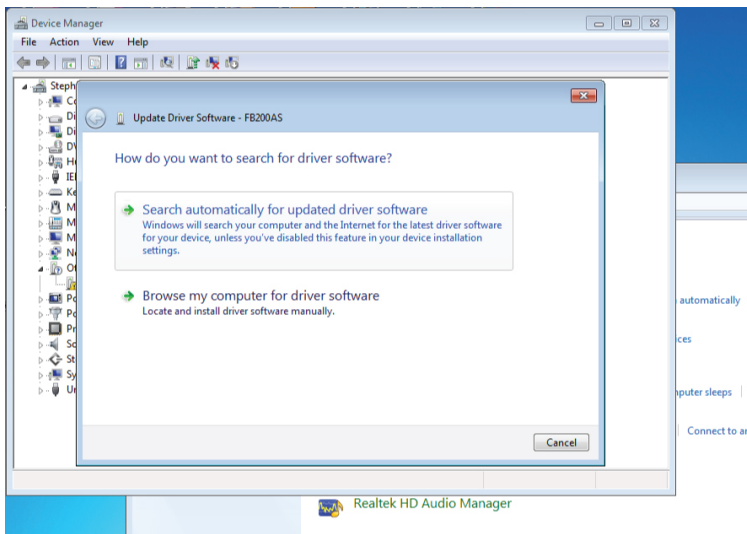
4. Under the Devices and Printers, click "Device Manager".



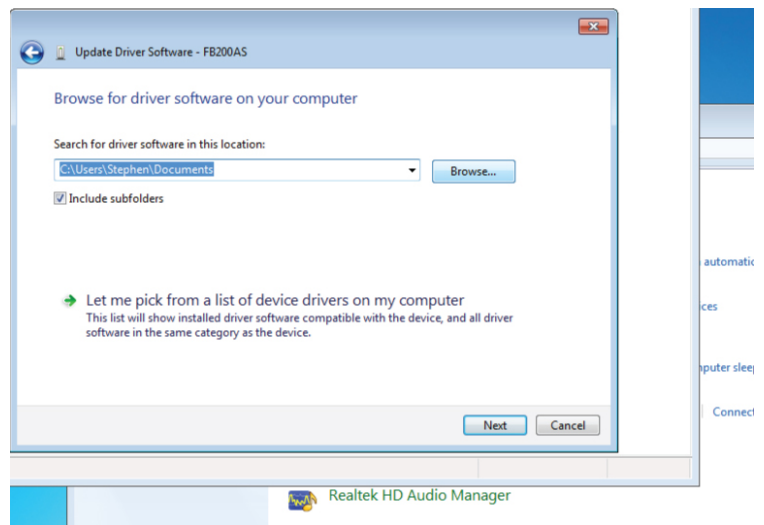
5. In the list of devices, click "Other devices"



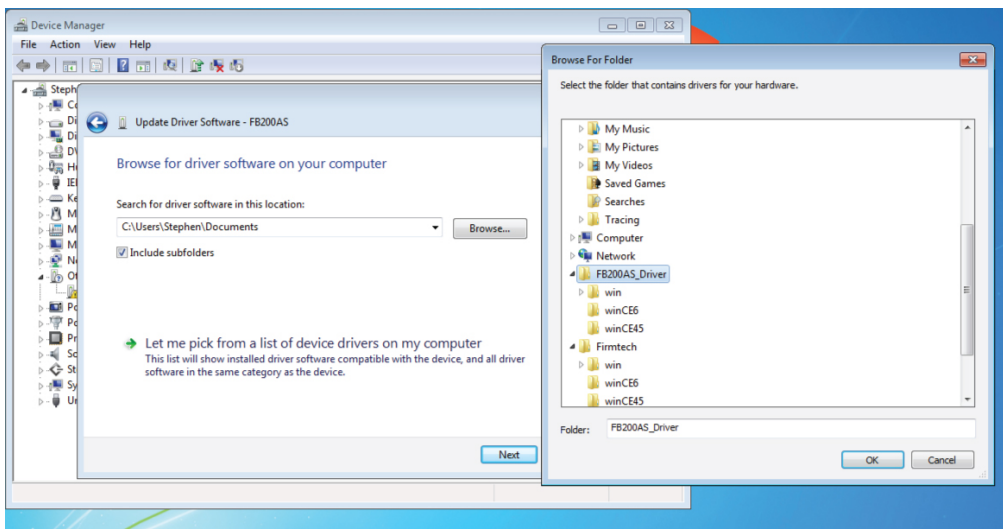
6. Right click "FB200AS" then, click "Update Driver Software".



7. Click "Browse my computer for driver software".

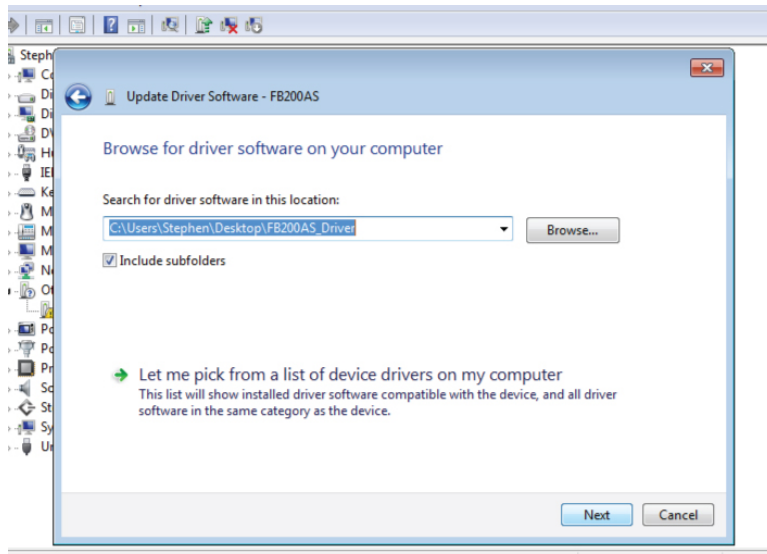


8. Make sure there is a check mark by the "Include subfolders", then click "Browse" button.

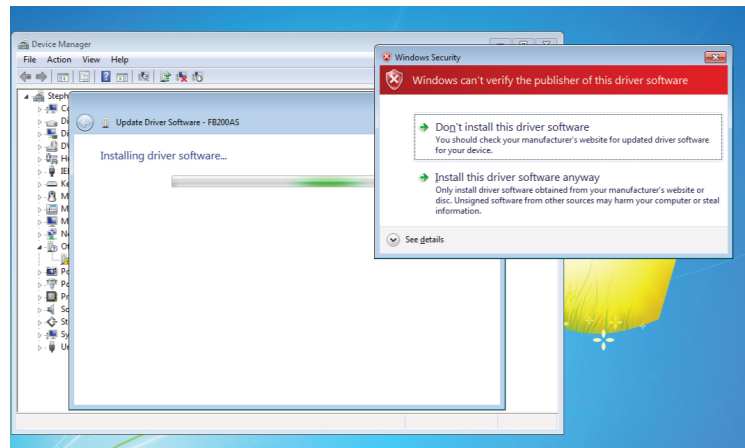


9. Locate the FB200AS\_Driver folder in your computer. This folder was installed in the previous page. Choose the FB200AS\_Driver then click "OK" You do not have to click the subfolder.

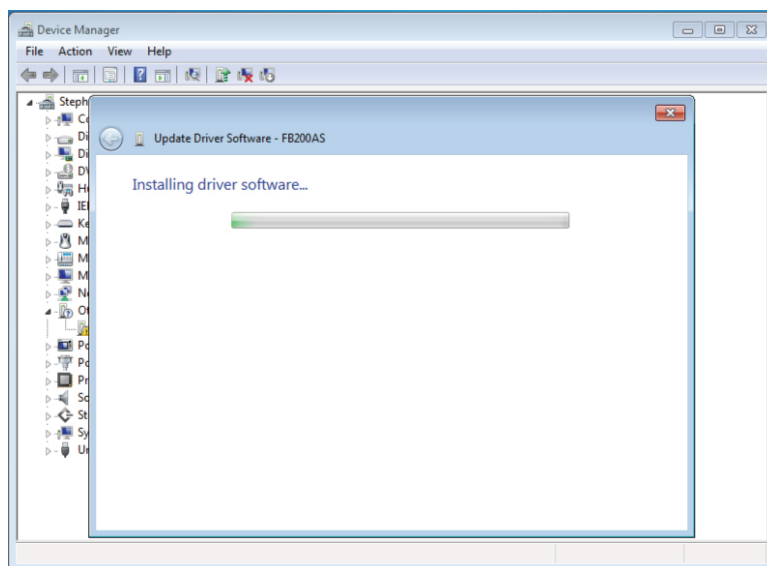




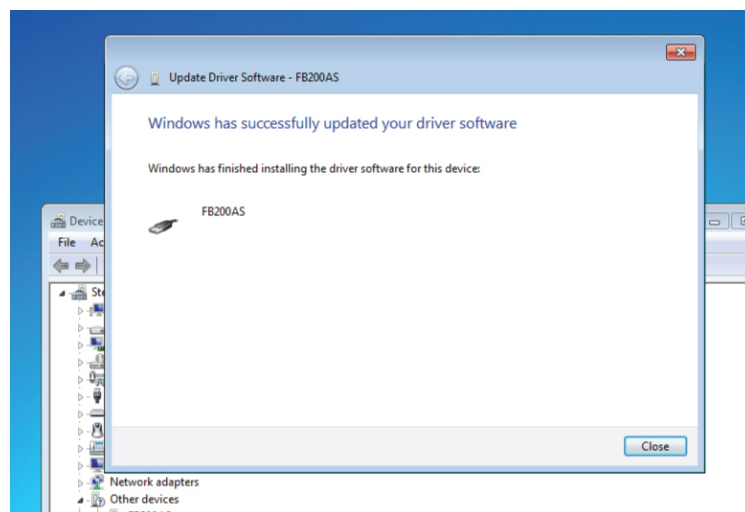
10. Click "Next". \*\*Make sure the end folder in the destination is FB200AS\_Driver. Also, make sure there is a check mark by the "Include subfolders".



11. Click "Install this driver software anyway".



Installing..(Wait)



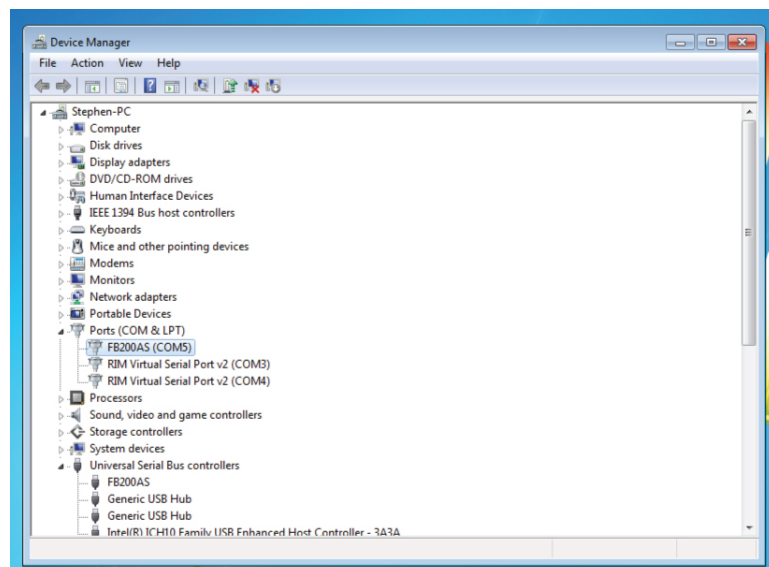
12. Click "Close".

## IMPORTANT NOTICE

After the installation, you may have to repeat the same process. Go back to Page 2, and start the process from,

2. Click Start Window Icon then, click "Control Panel".

After the installation is complete, in the Device Manager, click "Ports (COM & LPT)". You will see FB200AS with your COM number. You will be using this COM number for programming later.



## **EyeTV Software Installation**

**IMPORTANT NOTICE:** Before installing the software ensure you have install the Bluetooth driver (for Bluetooth users) or RS232 to USB converter driver (for Cable users). For installing the RS232 to USB converter driver, follow the instruction manual in the USB\_Converter\_Driver folder in the Soulphase CD.

1. Open the EyeTV folder in the CD.
2. Double click and start the eyetv application file.
3. Follow the installation procedure with "Typical" choice.
4. After installation, start EyeTV software by double click the Eyetv.exe icon in the desktop screen.

## **Pairing Sign & PC**

**IMPORTANT NOTICE:** This procedure, pairing sign and PC, is necessary every time you start EyeTV software.

1. Power on the sign.
3. Start Eyetv (Double click the eyetv.exe icon in the desktop screen)
4. Click "**Board**" on the eyetv menu.
4. Click **Connect(E)**.
5. Choose one of the COM# in the COM. Port then Click **COM. Test**. If you can define the COM number from the device manager ignore this process. Wait long enough until the system tells you weather its connected or couldn't find board information.

If incorrect COM. Port was chosen, the software will notify you by "Couldn't find board information". In this case, close the software and restart it. Then proceed with the **COM. Test** on other COM ports until you see the message "152000 Baudrate Connected" (the Baudrate number may vary).

6. When you see 152000 Baurdate Connected, Click **OK**.

**Now the sign and the computer is connected. Proceed to the next page on programming.**





# Programming

**IMPORTANT NOTICE:** In order to display the contents properly, each content must have 4 sets of steps.

1. Region
2. Text
3. Action
4. Wait Time

\*\*If even one is missing, the content will not display properly on the sign. Keep this in mind as you follow the instruction.

\*\*In order to display several different messages simultaneously, simply repeat the same setups after another.

	Region	1,1 ~ 6,2
	Text	20% Sale Limited Time
	Action	Left1
	WaitTime	2 sec

## Setting Screen Size

Before the actual programming starts, you will need to set the screen size for your LED sign. This is one time setting and you will only need to do it once.

1. On the eyetv menu, go to **Set** then go down to **Screen Size(A)**.

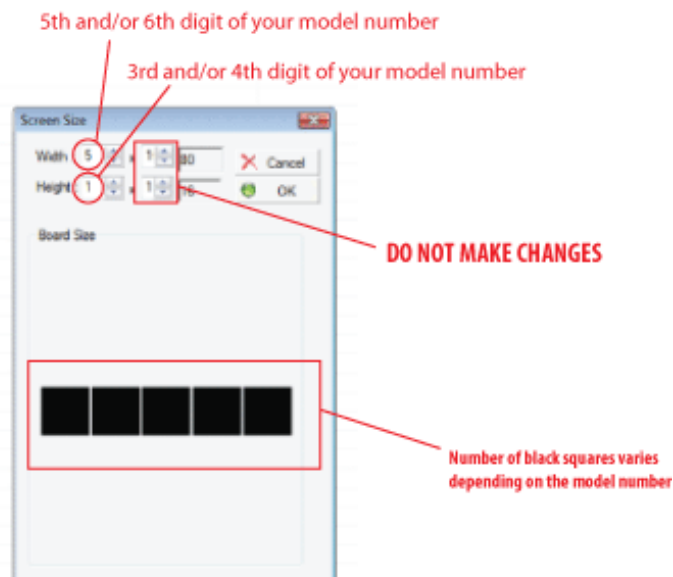
2. For the Width:, input the **4th and 5th** digit of your model number. For example, if your model number is 32X1X3, the width will be 3.

3. For the Height:, input the **3rd and/or 4th** digit of your model number. For example, if you model number is 32X1X3, the height will be 1.

4. Click OK.

**\*\*Ignore the digit if there is X.**

**\*\*Setting screen size is only needed in the first time. Once its set, the software will remember the setting.**



## Step 1. Region

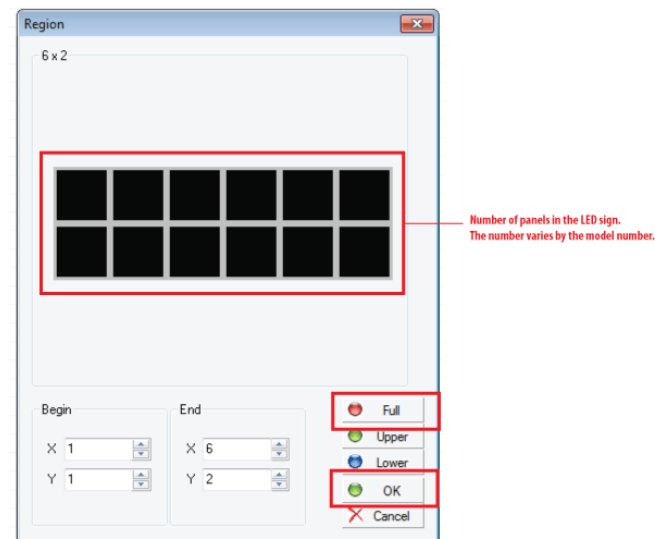
Region gives you the option to display messages in different portions of the screen. In most cases, you will be using the full screen.

1. On the eyetv menu, go to **Insert** then go down to **Region(R)**.

2. In the Region window, click **Full** then click **OK**.

3. You will then see the Region set in the page.

**\*\*The black squares represents the number of panels in your sign.**



## Step 2. Text

You can input any messages, numbers, and special characters in the black background. Try using different font, sizes and color.

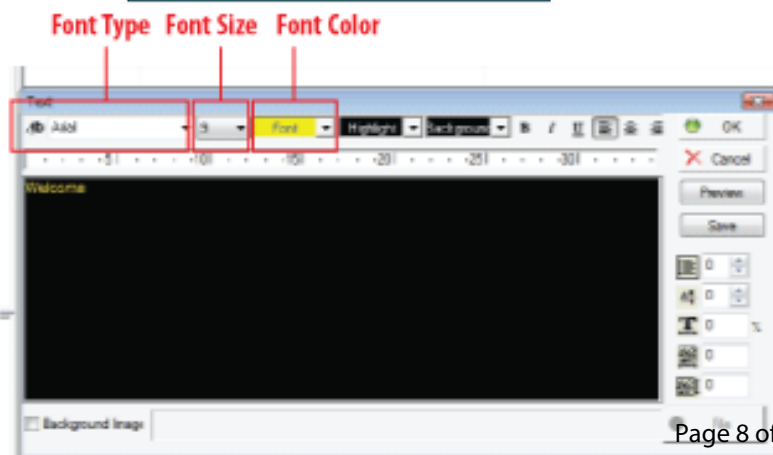
1. On the eyetv menu, go to **Insert** then go down to **Text(Y)**.

2. In the text window, input characters in the black background.

3. When done, click **OK**.

4. You will then see your typed text underneath the Region in the page.

**\*\* You may input text and high light the words using your mouse and change size and color.**





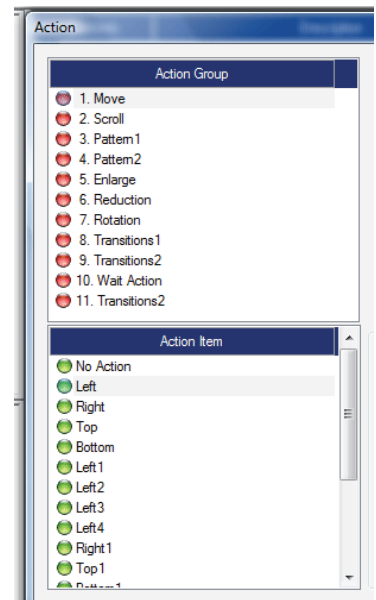
## Step 3. Action

**IMPORTANT NOTICE:** DO NOT USE 2. Scroll. 1. Move is our latest update and it is the exactly the same effect as the Scroll. 2. Scroll sometimes makes an error and it may not display the messages properly.

Action is the visual effect. In each Action Group, there are different action items.

1. On the eyetv menu, go to **Insert** then go down to **Action(J)**.
2. Click once in **Action Group**, and and select one **Action Item** (click it once).
3. Click **OK**.
4. You will then see your chosen action underneath the text in the page.

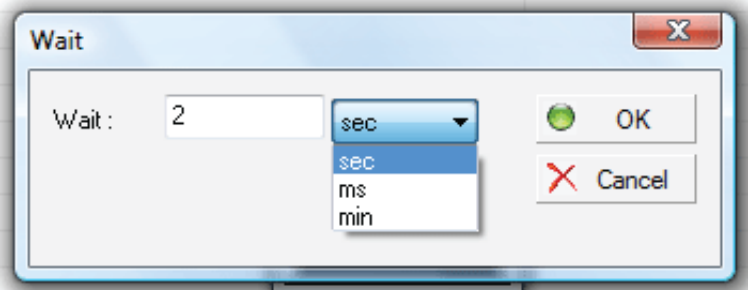
**\*\*You may adjust the speed of the effects by changing the Frame and the speed.**



## Step 4. Wait Time

Wait time determines the hold time after the message plays its effects. Thus, the wait time after the message will determine the hold time between messages when its repeated.

1. On the eyetv menu, go to **Insert** then go down to **Wait Time(W)**.
2. Input the number and select the unit. You have options of Mili-Seconds, Seconds, and Minutes.
3. Click **OK**.



## Now you are done in software programming.

Your content will be different from the image. However, as long as you have the 4 sets of Region, Text, Action, and Wait Time, the message will display properly.

Before you proceed to the last stage, ensure the sign and the PC are paired.

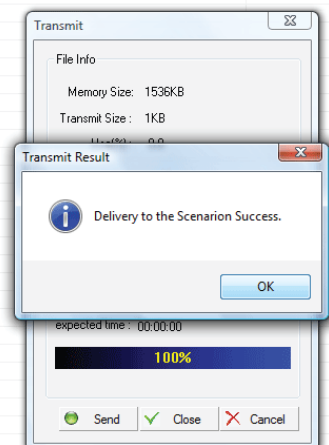
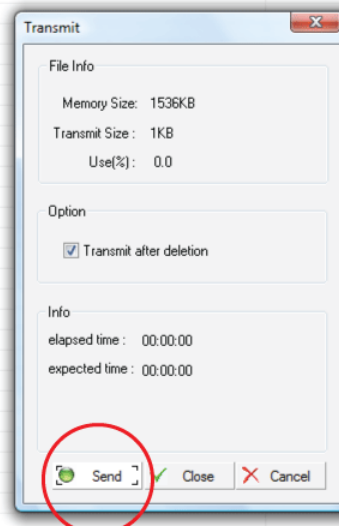
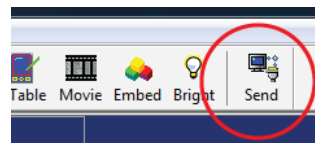
## Last Stage - Send codes to the sign.

1. On the eyetv large icon menu, **click send**. If you can't click send, it means the sign is not paired with the sign.
2. Send window will pop up, **click send** again.
3. Congradulation! You will now hear the beeps from the sign and you will see the message you programmed displaying on the screen.

**\*\*Turning off the sign, won't erase the content you programmed. The content will be stored in the internal memory of the sign.**

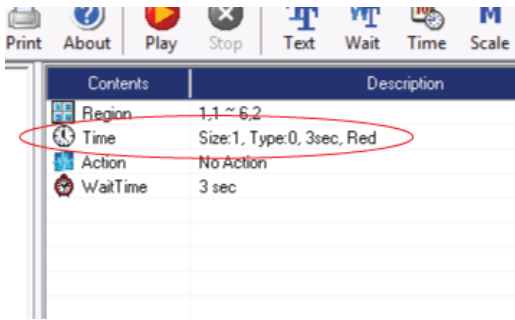
The screenshot shows a table with two columns. The first column contains icons and labels, and the second column contains the programmed values.

	Region	1,1 ~ 6,2
	Text	20% Sale Limited Time
	Action	Left1
	WaitTime	2 sec



# Programming-Additional Features

## 1. Time Display



\*\*Before displaying time, you may need to update the signs internal time clock. You may do so by going to the **Board** and **Transmit (T)** and **Time Update (T)**. Ensure the sign and the PC are paired first.

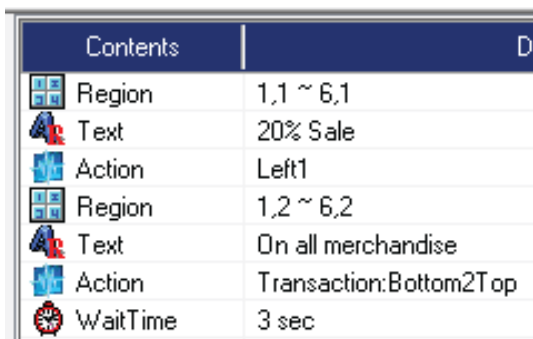
Using the same four steps but instead of text, you will choose Time & Date feature. Go to **Insert**, then click **Time & Update (Q)**. You can choose different time format in different color.

## 2. Temperature Display



Using the same four steps but instead of text, you will choose OutInfo. Go to **Insert**, then **OutInfo**. You can choose different temperature format in different color.

## 3. Multiple Line Messages



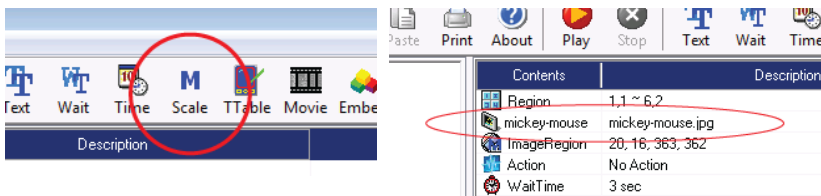
**IMPORTANT NOTICE:** This feature is only available with model number that has value of 2 or higher in 3rd and/or 4th digit.

For model number that has 2 in 3rd and/or 4th digit, you may choose **Upper** or **Lower** setting when you apply region (not full).

For model number that has greater than 2 in 3rd and/or 4th digit, you may select the lines by adjusting the value in the X and Y column.

**Wait Time is only added once at the end of the set.**

## 4. Image

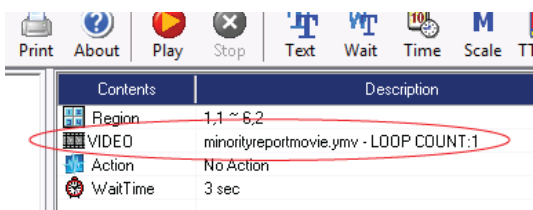


Using the same four steps but instead of text, you will choose **Scale**. It is in the large icon menu.

Open the image by the two dots button located next to the OK button. Stretch the region box to cover the area you want to display.

**\*\*Tip.** Adjust the image size using another software prior to opening in eyetv.

## 5. Video



Using the same four steps but instead of text, you will choose Movie . Go to Insert, then Movie. In the video window, click video editor, and edit the video you want to display.

**\*\*Tip.** If mistakes are made during programming, use the delete button located in the right bottom corner of the screen.

**\*\*Tip.** When you have the messages programmed, save them in your computer for future use.