

Maintenance

To keep your Javelin Bipod in perfect working condition and to protect the finish and operation of the bipod, it is recommended that you apply simple cleaning with a damp cloth and then dry it with a cotton cloth.

A Silicon gun cloth will also work fine on the Javelin bipod surface/finish.

WARNING

- Shooting and handling of weapons can be dangerous. Spartan Precision Equipment Limited takes no responsibility for individuals and or parties undertaking the use of its products. It is the sole responsibility of the individual and or party to assess all risks.
- Correct installation and fitment of the products is imperative and the responsibility for this remains with the user at all times.
- Javelin Bipods are **NOT** intended for mounting or supporting a firearm on any vehicle.
- Always unload your firearm prior to installation or removal of the bipod.
- **DO NOT** over tighten the rifle adapter plate screw or you may strip the threaded hole. Stripped holes are NOT covered by our warranty.
- **DO NOT** fire any firearm with the feet extended beyond the muzzle.
- **DO NOT** reach in front of your firearms muzzle to make adjustments to the bipod.

Failure to follow these warnings may result in property damage, personal injury or even death!

Website: www.JavelinBipod.com

For the very latest information about our products and accessories, our latest news and advice, please check our website, and while you are there please take the opportunity to register your Javelin Bipod for warranty.

For further sales and support:-

web: www.javelinbipod.com

email: support@javelinbipod.com

Tel: (UK) 01293 880120 Int.: +44 1293 880120



JAVELIN SUPER LITE™ USER MANUAL

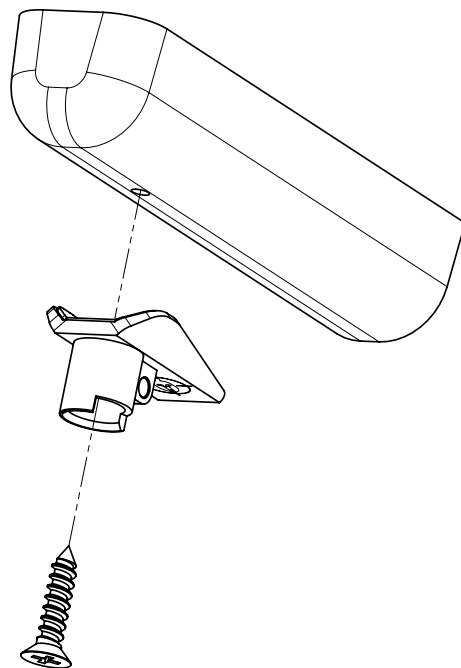


Guillotine / Cut Line

Guillotine / Cut Line

Attaching the Rifle Adapter Plate

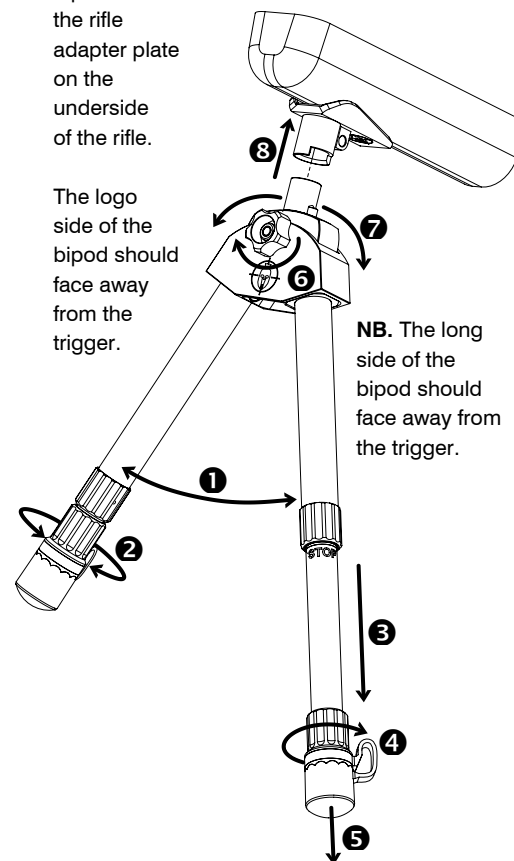
1. Assemble rifle adapter plate to the stock, ensuring that the Logo faces towards the trigger.
2. Fix the rifle adapter plate to the rifle stock using the appropriate screw. Two screws are supplied: One **#12** wood screw and one **M5** machine screw. Please use whichever screw is appropriate to your rifle.
NB. The supplied screws are **special** magnetic stainless steel - **DO NOT USE OTHER SCREWS!**
3. Attach the sling swivel as appropriate.



Using the Javelin Bipod

1. Open the legs of the bipod.
2. Undo the lower leg by rotating it anti-clockwise.
3. Extend the leg by pulling it gently – **DO NOT** pull the leg beyond the **STOP** signs.
4. Lock the leg in the position required by rotating it clockwise.
5. Gently remove the foot as required (it will remain attached to the lower leg).
6. Gently tighten the cant thumb nut until the cant block moves with the correct amount of resistance.
7. Rotate the cant block to the desired position.
8. Engage the bipod into the rifle adapter plate on the underside of the rifle.

The logo side of the bipod should face away from the trigger.



Bipod leg re-assembly

If the lower leg is inadvertently removed, it can be re-assembled into the upper leg. Resistance is felt when the “pinch web” on the plastic leg lock enters into the mouth of the upper leg. Continue to push until you feel this resistance has been overcome.

Complete Disassembly

This is performed at the owners own risk, and violates warranty conditions.

