

## **XCM X1 wireless controller shell (Plus) Usage manual**

### **1. Features :**

Two new D-pads: One of them is the new designed D pad made for fighting game.

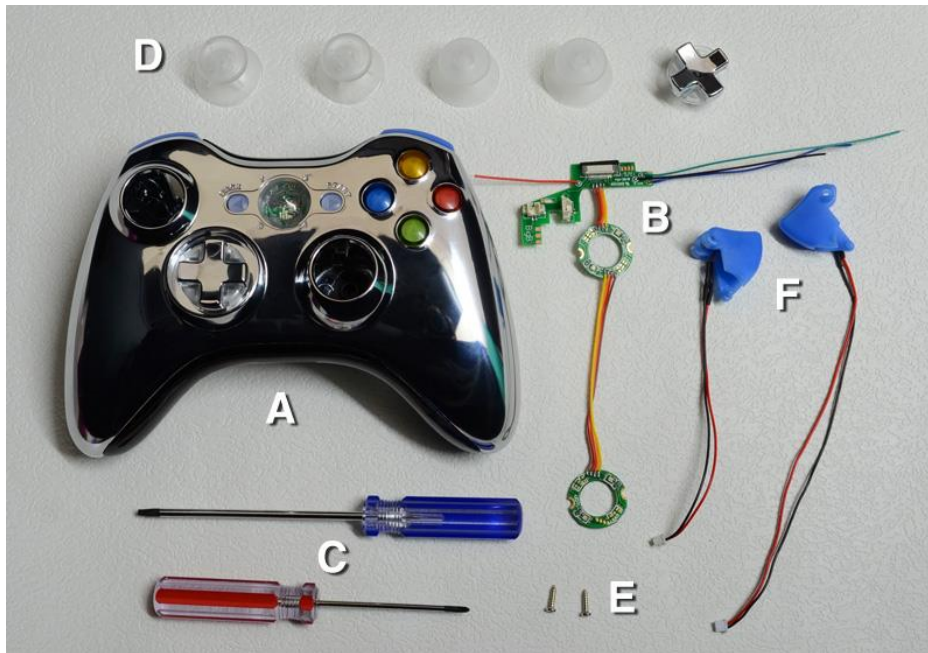
New diamond shaped Guide key – the **diamond shape GUIDE key** will emits a colourful bright light once it lits up.

Note: Only the X 1 wireless controller shell with rapid fire model is built with the auto fire function on the two triggers buttons.

Includes four (4) LED analog thumb sticks (2pcs of Concave and 2pcs of Convex), a LED kit set for lighting up all buttons.

### **2. Package includes:**

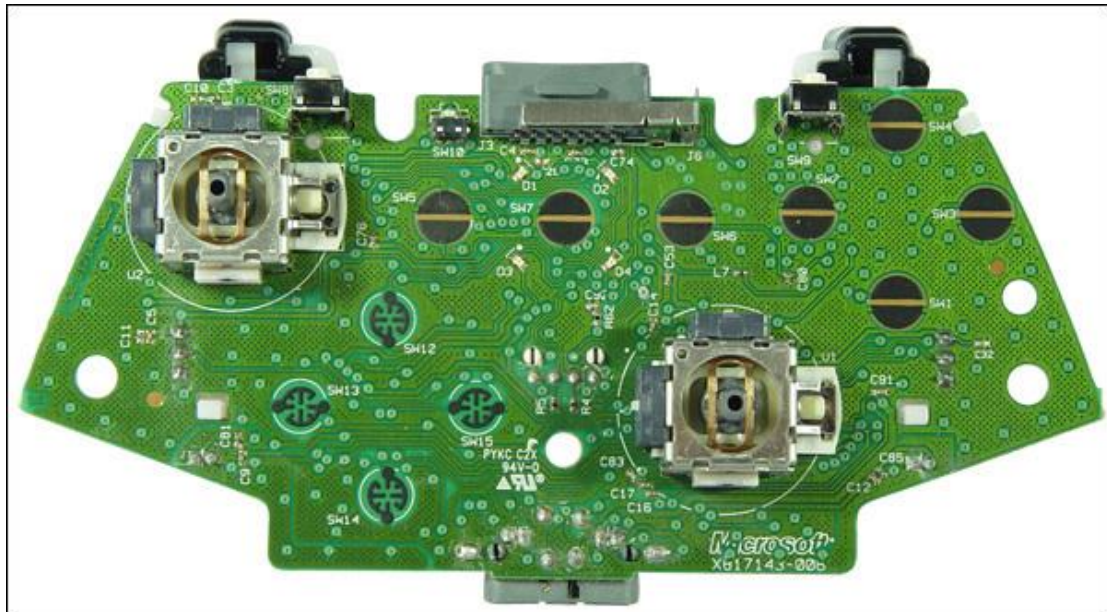
- A. X1 ( Plus ) replacement shell
- B. PC board x 1pcs
- C. Screw driver x 2pcs
- D. D pad x 1sets , LED analog thumb sticks x 4pcs (2pcs of Concave and 2pcs of Convex)
- E. Phillips screws x 2pcs
- F. Rumble motor x 2pcs- for RT and LT button as shown on the picture below:



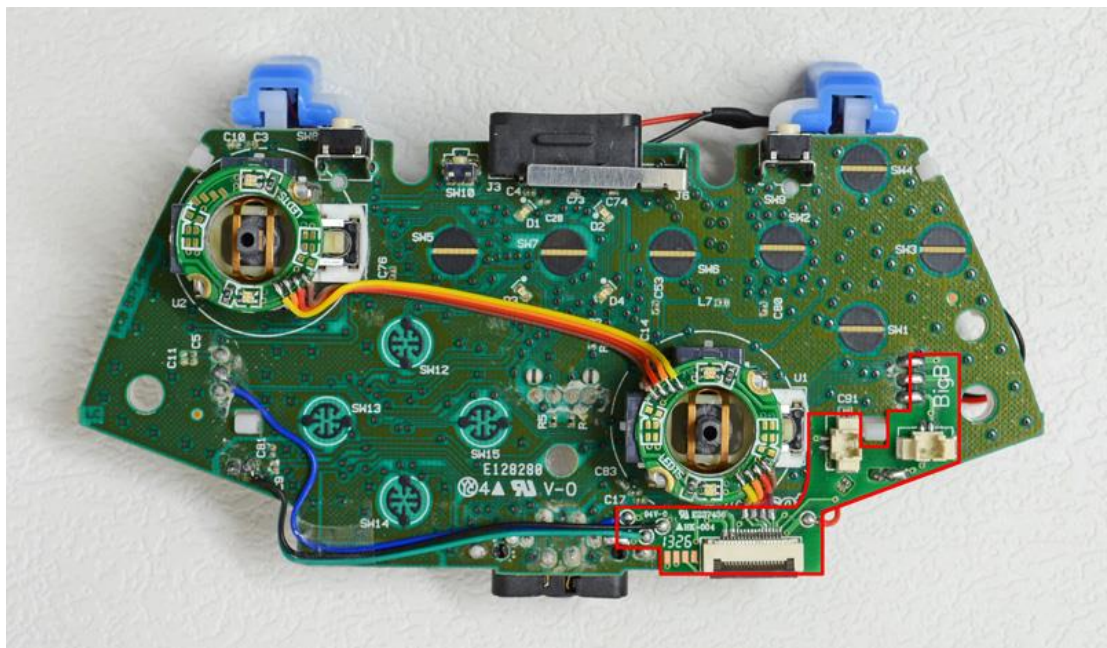
### **3. Installation**

The Xbox 360 wireless controller has 2 different versions, check before installation.

A: Version 1 of Xbox 360™ wireless controllers.

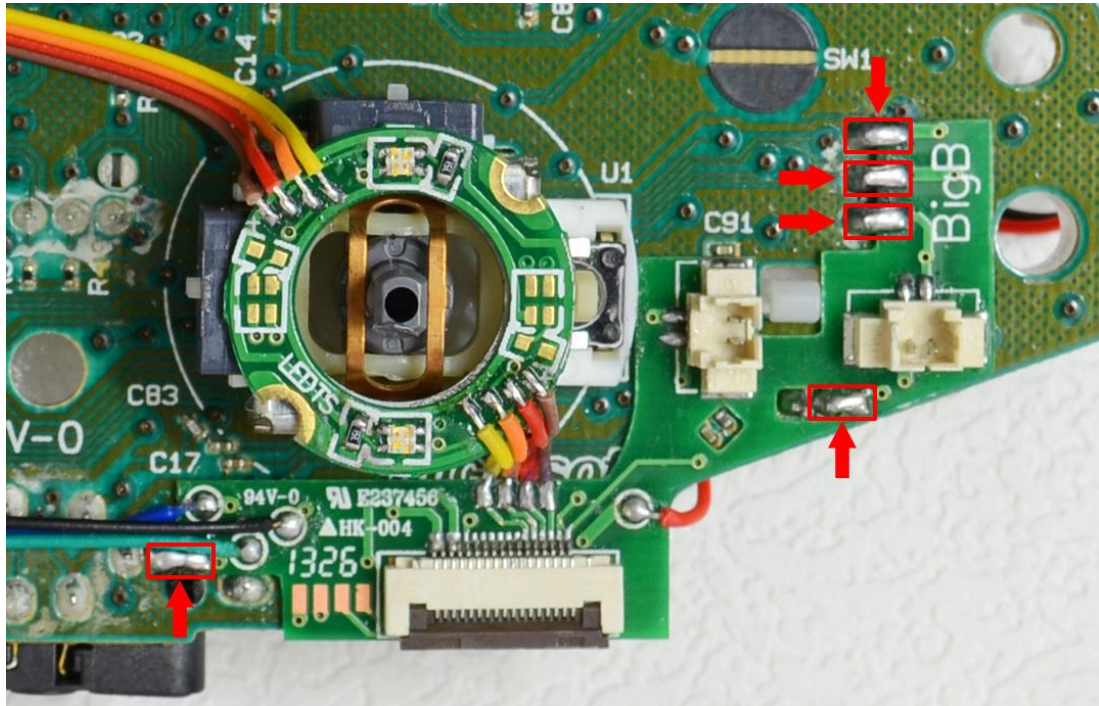


( A-1 ) Place the PCB of X1(Plus) on to the 360 wireless controller board.



( A-2 ) Solder the 5 points (arrow indicates)



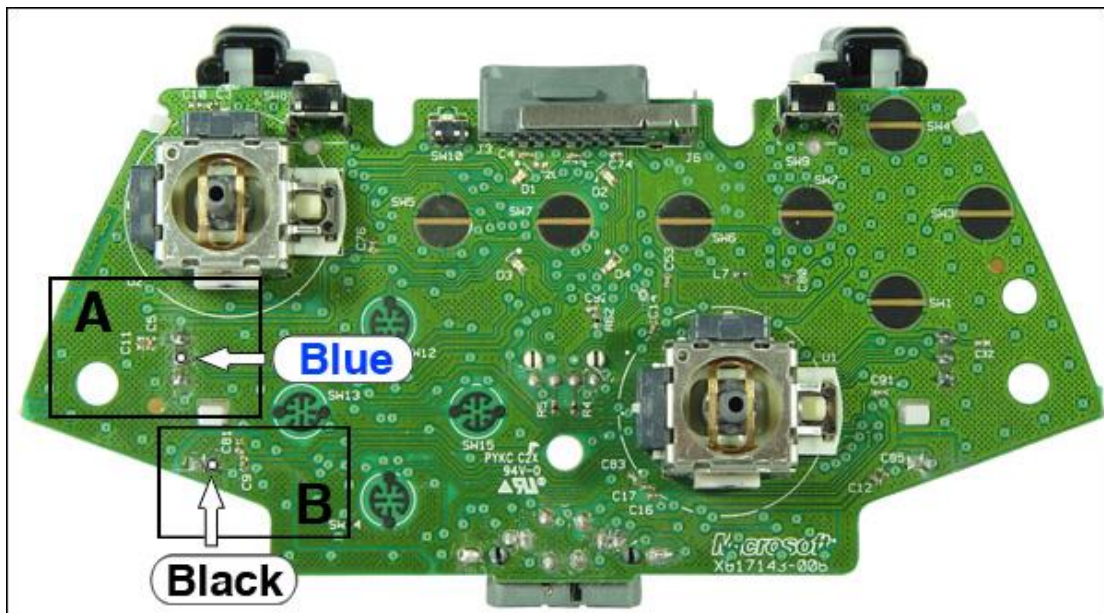


( A-3 ) Solder the point

As shown on the pictures (A, B, C, D), solder the providing wires to its correct position.

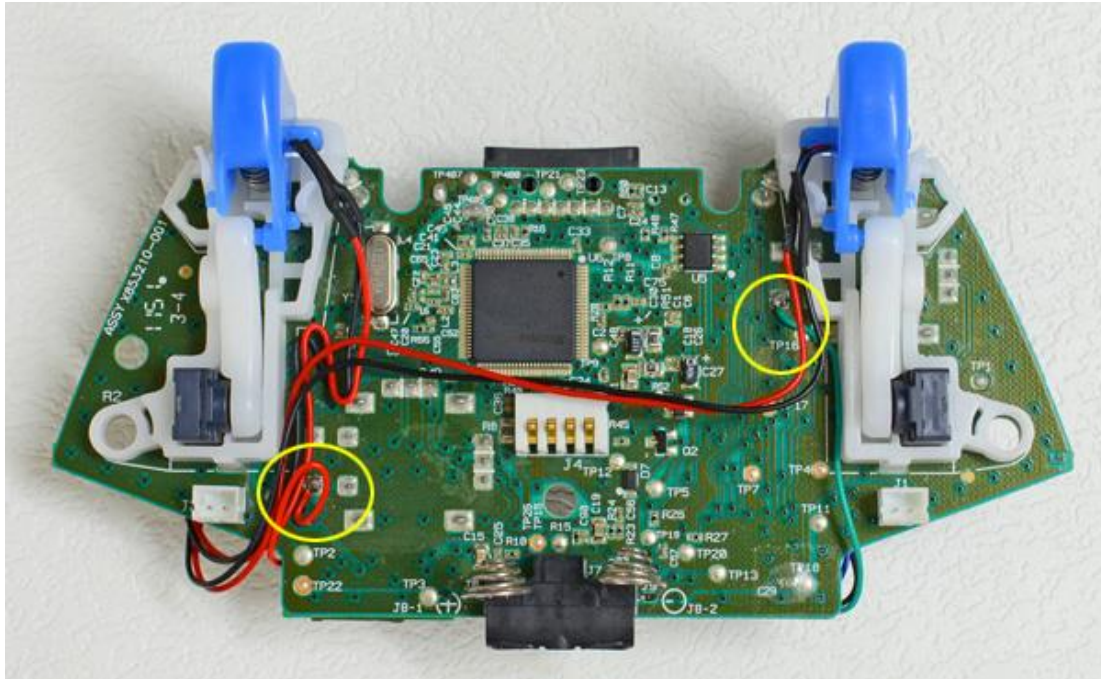
A- connects to the Blue wire, B- connects to the Black wire, C- connects to the Red wire,

D- connects to the Green wire.

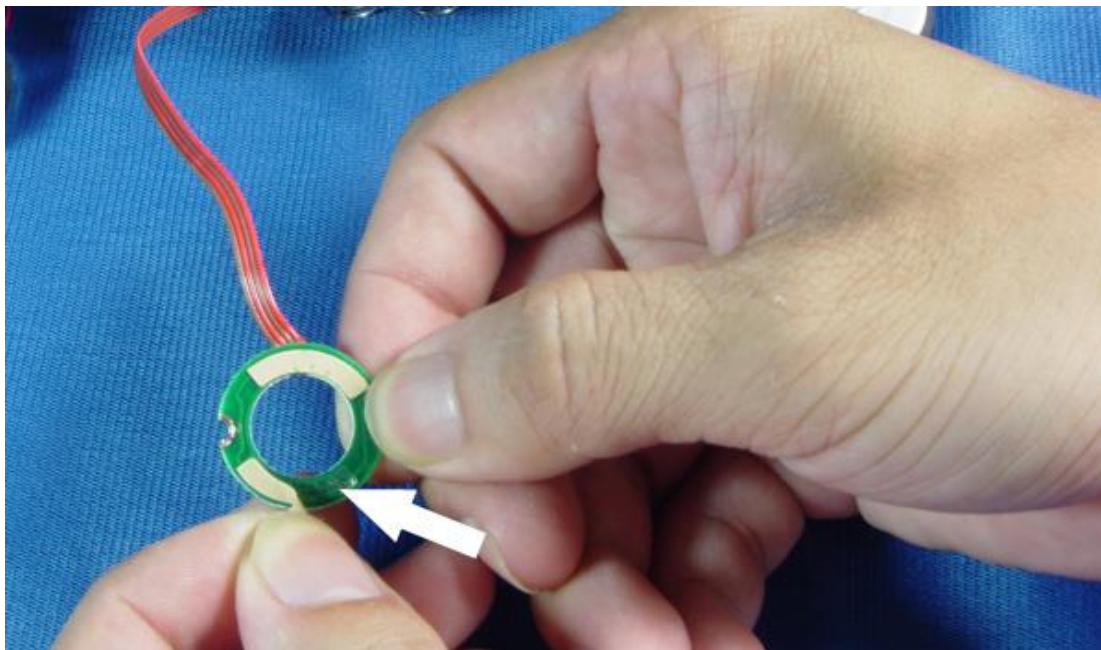




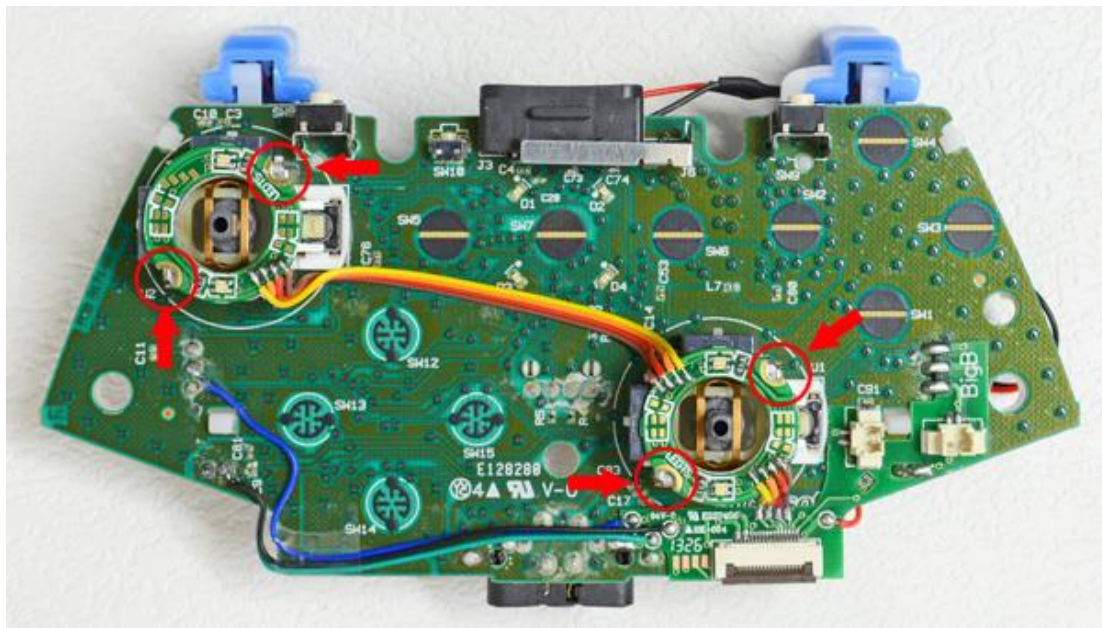




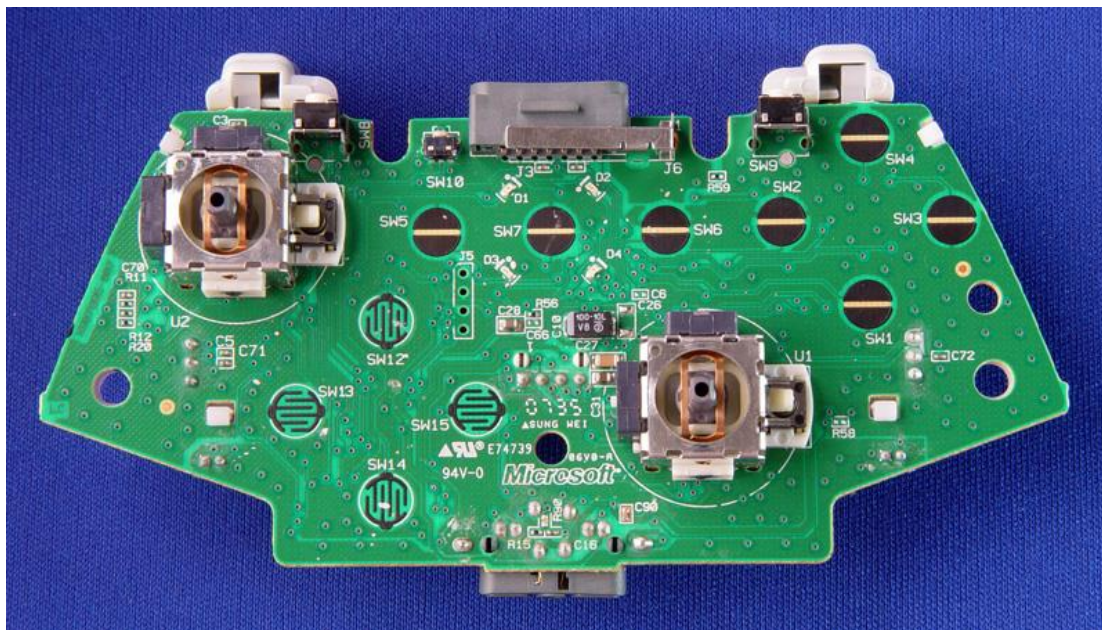
( A-4 ) Remove the stickers of the double-sided tape.



( A-5 ) Stick the 2 round PCB to the arrow indicated area and solder up the 4 points (red circle indicated)

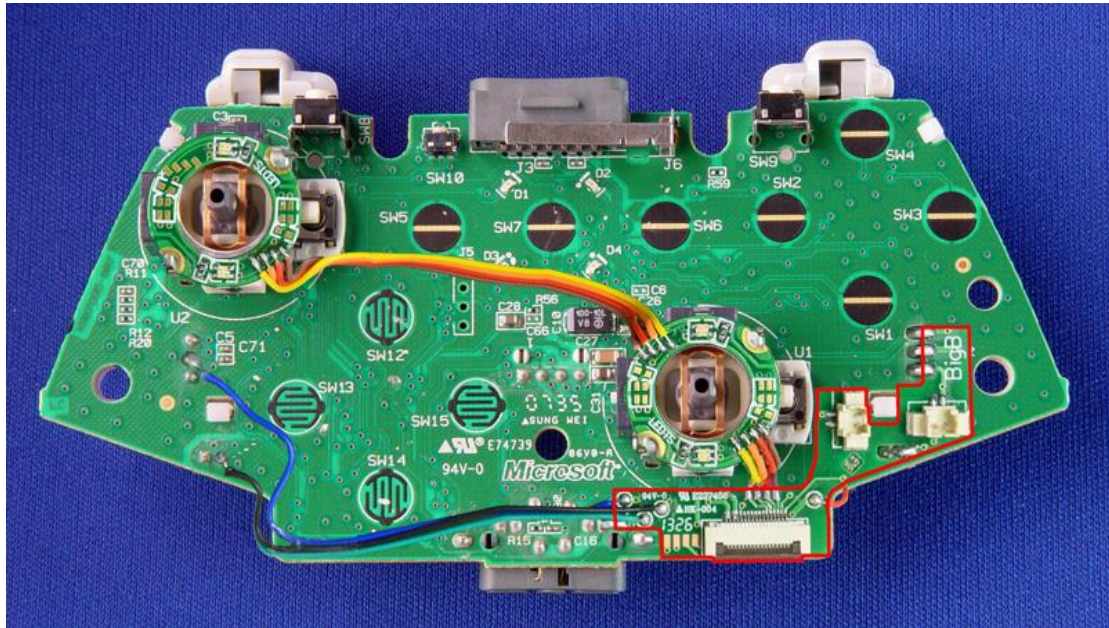


B: Version 2 of Xbox 360™ wireless controllers.

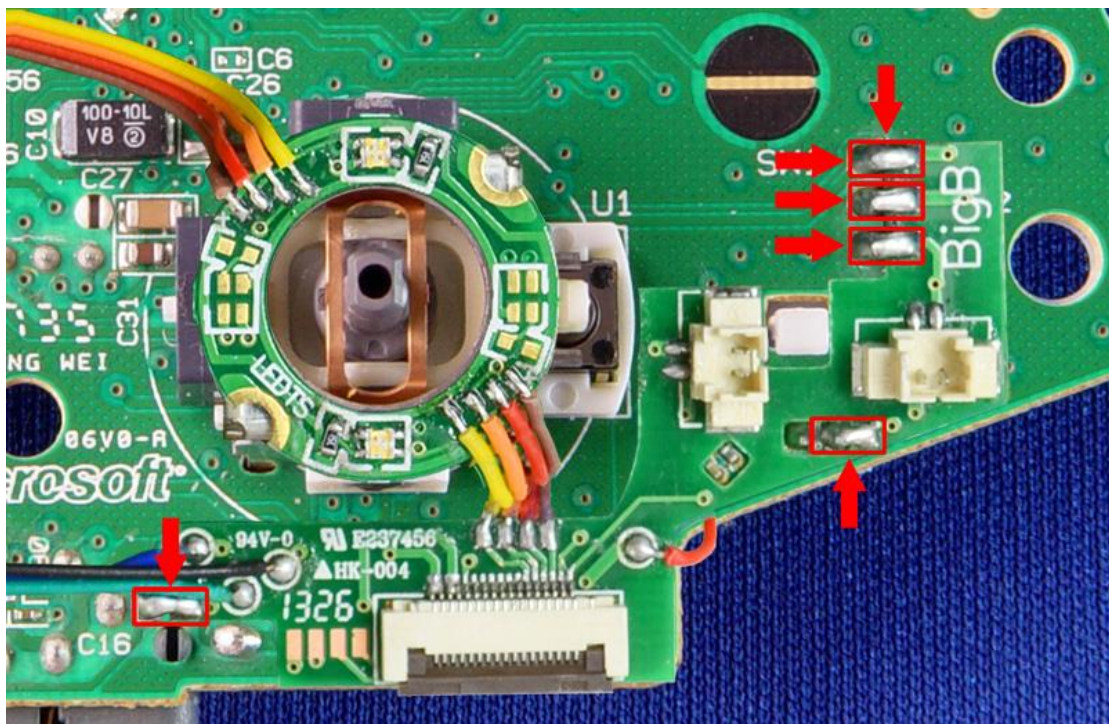


( B-1 ) Place the PCB of X1(Plus) to the 360 wireless controller board.





(B-2) Solder the 4 points (arrow indicates)

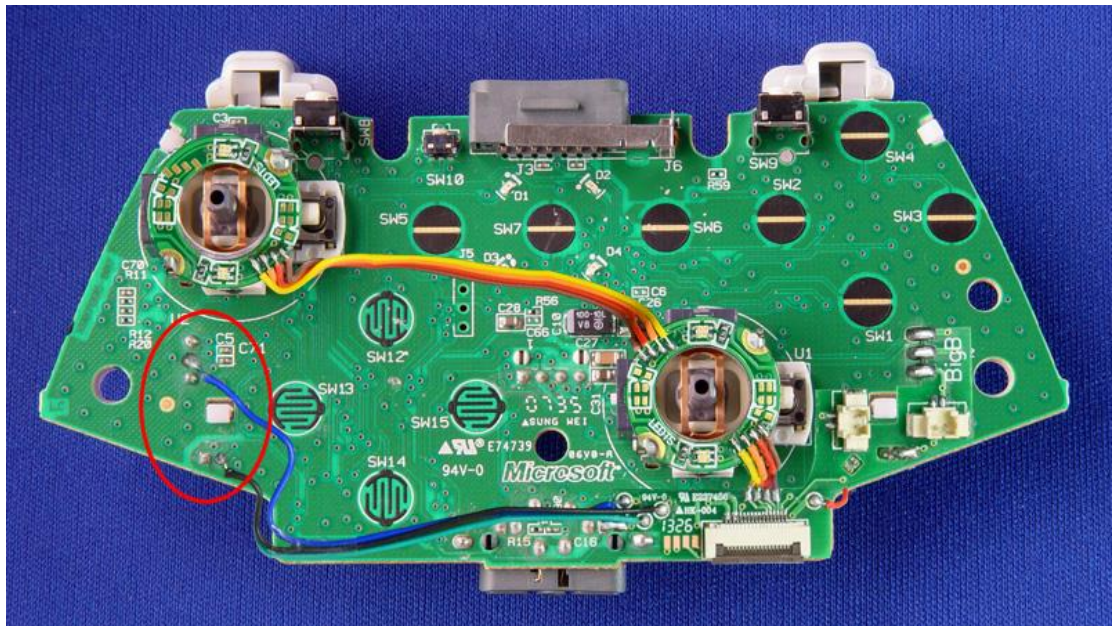
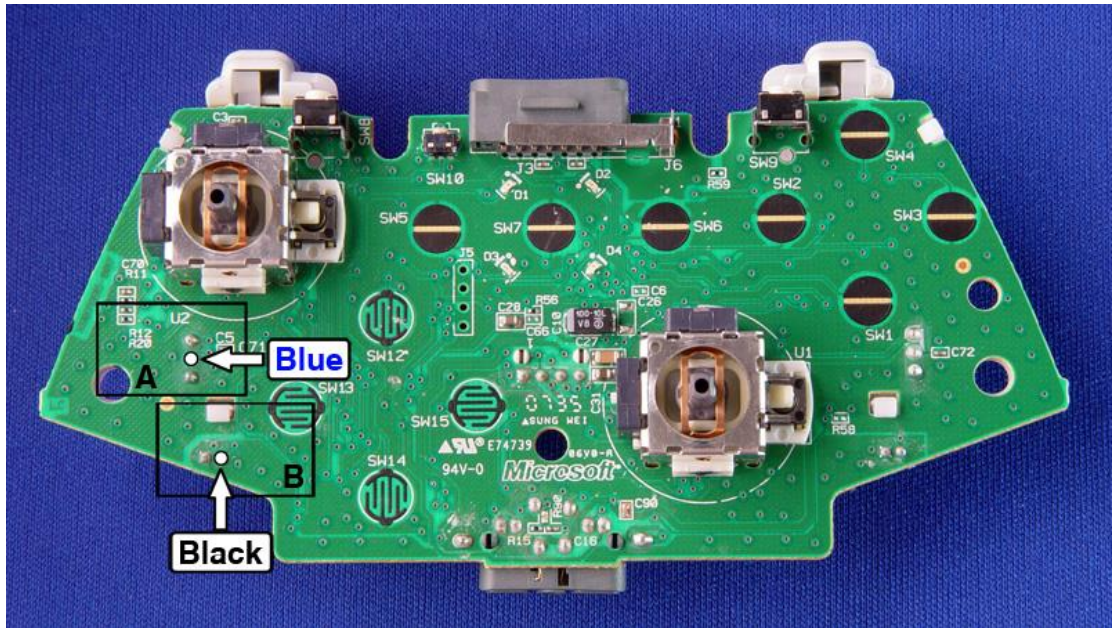


(B-3) Solder the indicated area

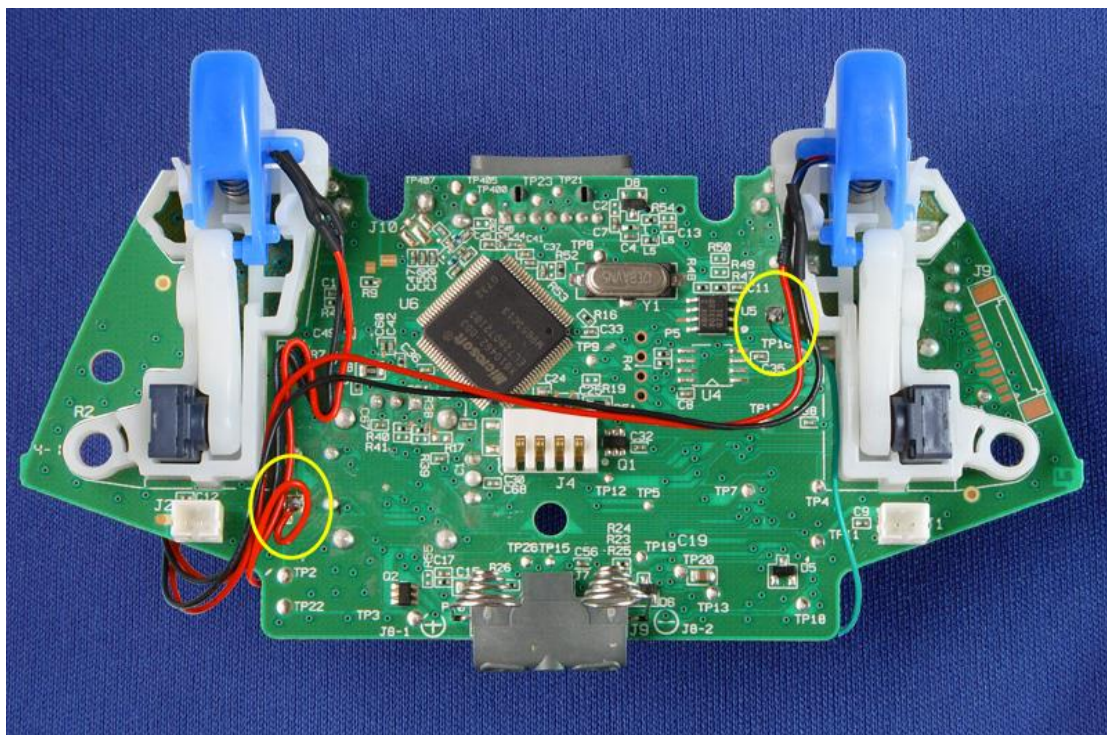
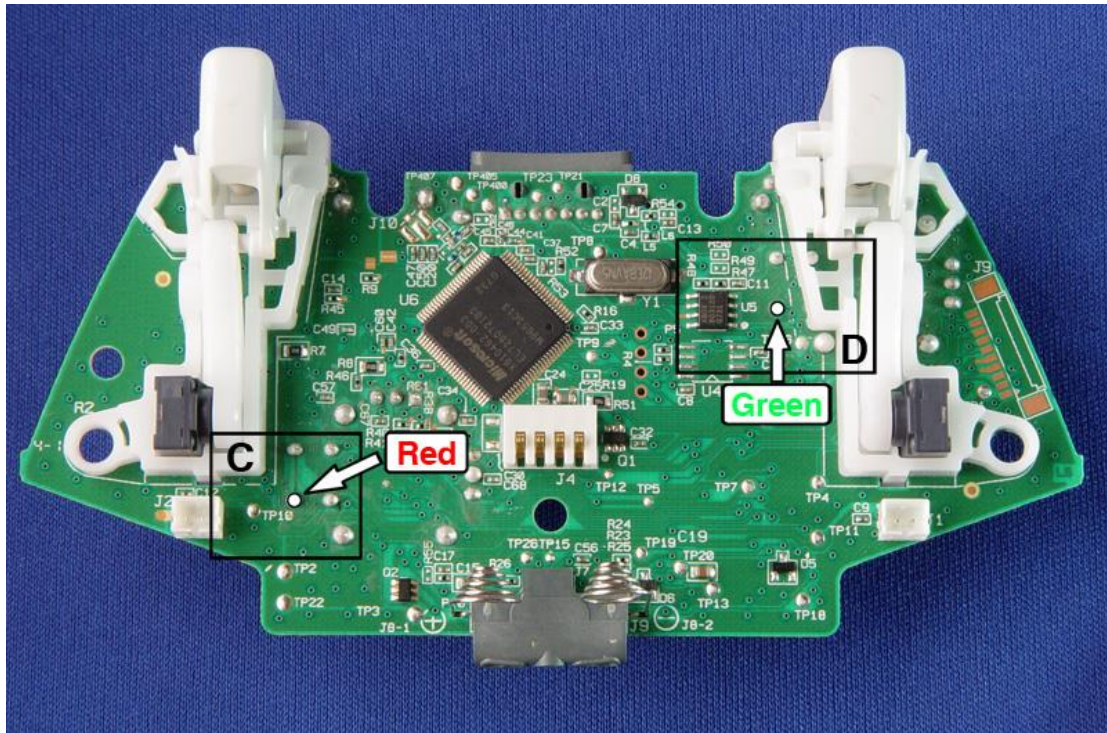
As shown in the pictures (A, B, C, D), solder the providing wires to its correct place.

A-connects to the Blue wire, B- connects to the Black wire, C- connects to the Red wire and D - connects to the Green wire.



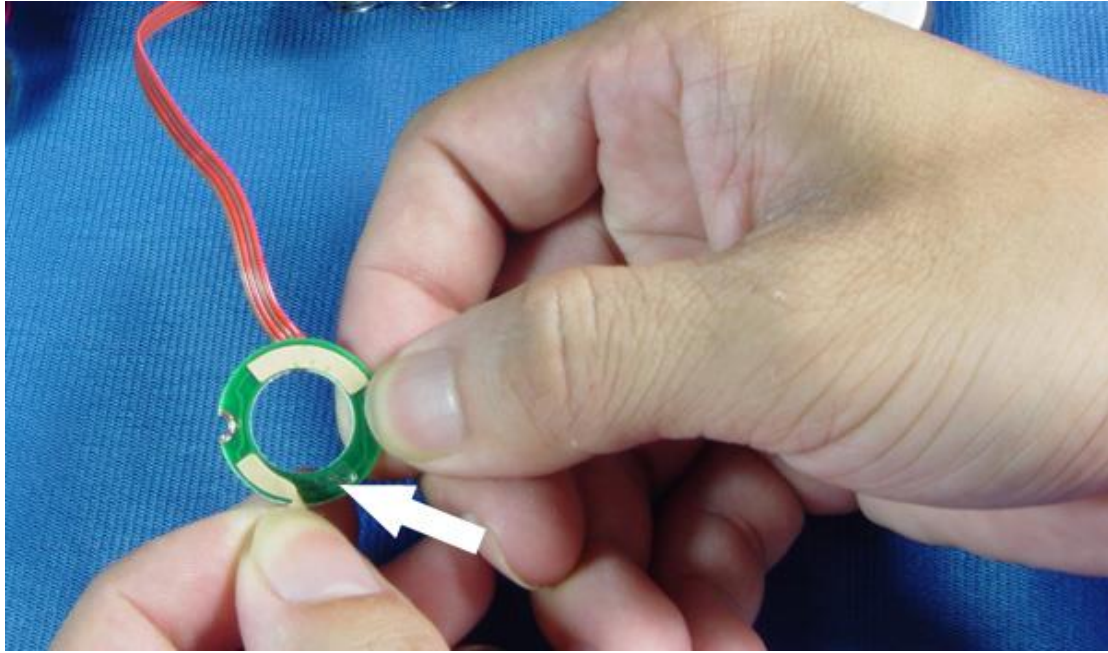




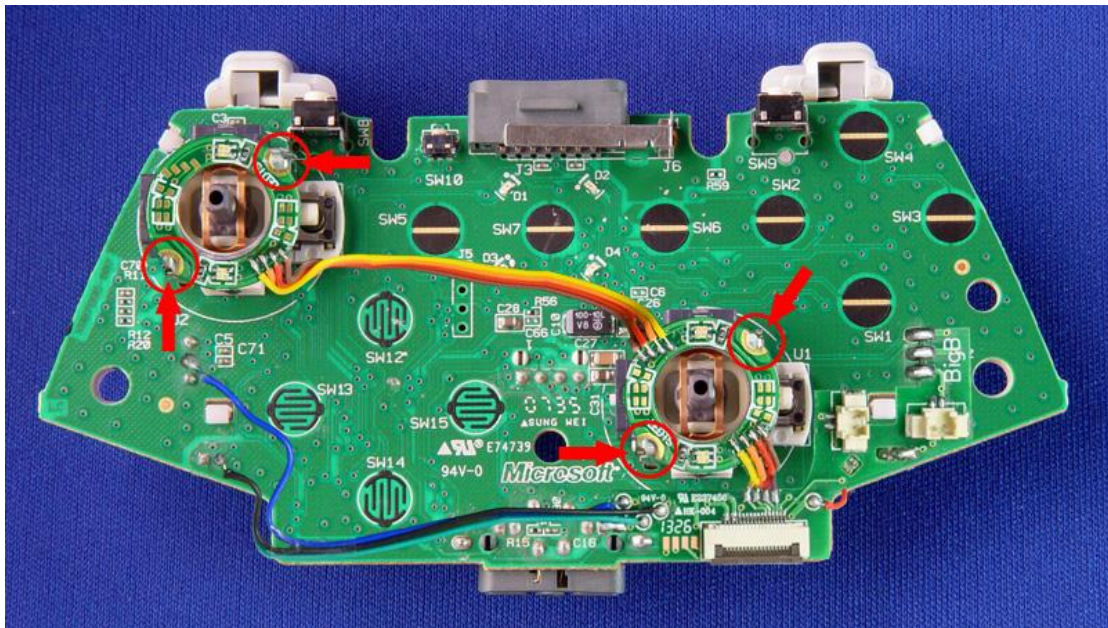


(B-4) Remove the stickers of the double-sided tape.



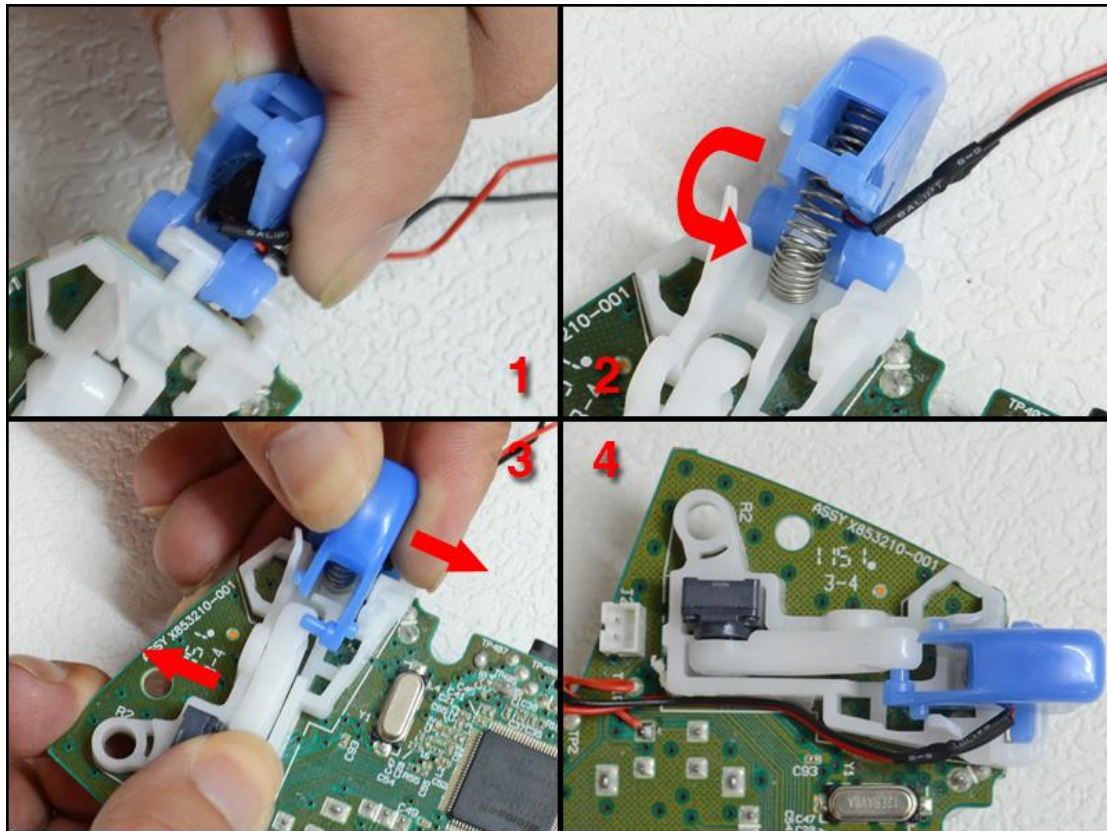


(B-5) Stick the 2 round PCB to the arrow indicated area and solder the 4 points (white circle indicated)

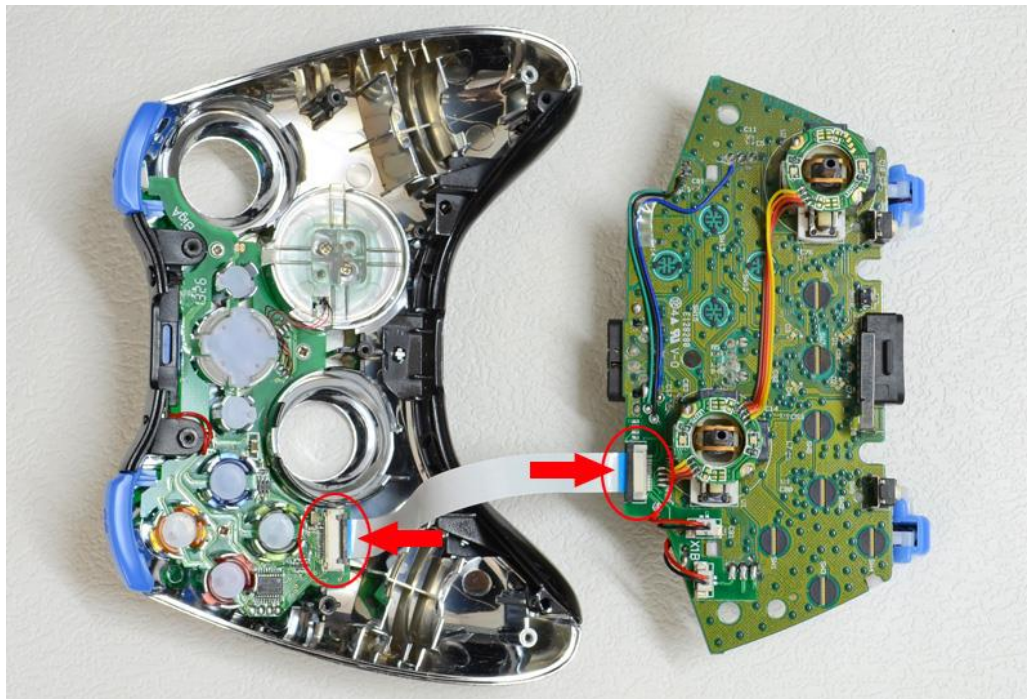


4. As shown in the diagram, install the RT and LT buttons step by step.





5. Use the double sided tape to fix the soldered wire properly, install the right and left analog sticks and LT, RT buttons. Correctly place the PC board to X1 (plus) replacement shell, finally plug the soft flat cable to the socket (as shown on the picture below, the arrow indicated)



6. Now cover up the bottom part of X1 (Plus) replacement shell and tighten it with screws, the installation is now completed.



## 7. How to install the D pad

(1) First, use the red screw driver to remove the screws, remove the crystal D-pad button, (as shown on the picture below)



(2) Install the chrome D-pad and the stand, fix it (by using the screws) properly onto the socket ( as shown on the picture below)



## 8. How to operate:

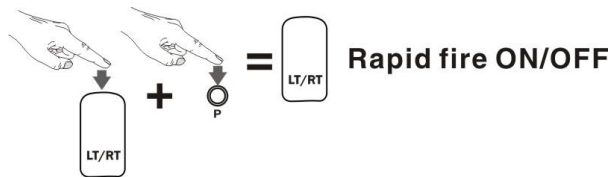
a: Rapid fire function (with AUTO AIM function)

X1 (plus) shell built in with the rapid fire function on 2 Triggers, the RT and LT triggers, the rapid fire rate is 20 shots per seconds

Turn on/off the rapid fire function: press and hold the LT button then press the P button once, release the LT and P button , you are now able to turn on or off the rapid fire function. The method to turn on/off the rapid fire function on the RT button is as same as the previous steps.( press and hold the RT button then press the P button once, now release the RT and P button , you are now able to turn on or off the rapid fire



function on/off RT button)



#### b: LED Monochromatic light settings

X1(Plus) built in many LED light on variety buttons, the Back, Start, A, B, X, Y, RB, LB buttons are monochromatic light , you are able to adjust the LED brightness in 5 levels, the setting method is shown below.

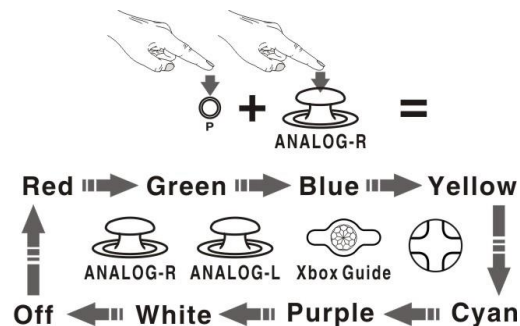
Press the P button consecutively to change the brightness of the LED light, it will change in the form of "0-1-2-3-4-5-0-1-2...", 0 means the LED light off, "1" means dim, "5" is the brightness.

#### c: the changeable LED light setting.

The Changeable LED light can be shift to 7 different colors,they are enable on the Right and Left analog sticks, Guide key and the D -pad , the color setting method is shown below:

Press and hold the P button and press the RC button once, now all of the **Monochromatic light** blinks, release the P and RC buttons.

The programming system is entered into the changeable LED light mode, press on LC or RC button consecutively, the **changeable LED light will change the color into a loop (from Red – Green – Blue – Yellow - light green – Purple – White - turn off)** when the color changes to your favorite color, press the P button once and it will exit the **changeable LED light setting program, it will stay on the color you chose.**



#### d: Rumble function setting

The X1 (plus) replacement shell built in 2 rumble motors on 2 controller triggers (the LT and RT buttons).

How to turn on/off the Rumble function:

Press and hold the P button then press the LC button once, now release the P button, you are enter the Rumble function setting status, all the LED Monochromatic light blinks, press the LC button again to turn on the Rumble function, the vibrator is now enabled, you can press the RC to turn off the Rumble function, (pressing the RC button, the vibrator is malfunction) press the P button to exit the setting mode.

All the setting (LED light mode, Rapid fire mode or the Rumble function modes) are saved on the device; you don't have to re-program it for your next game play.