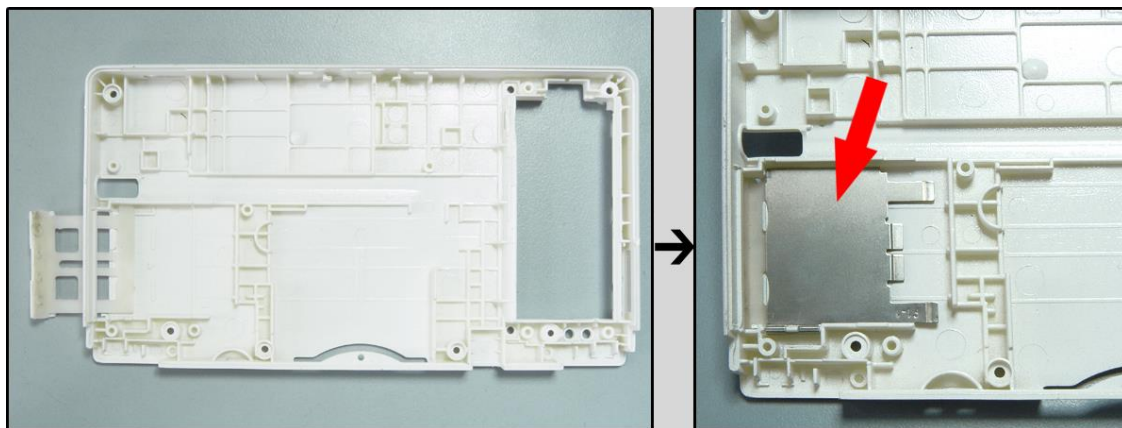


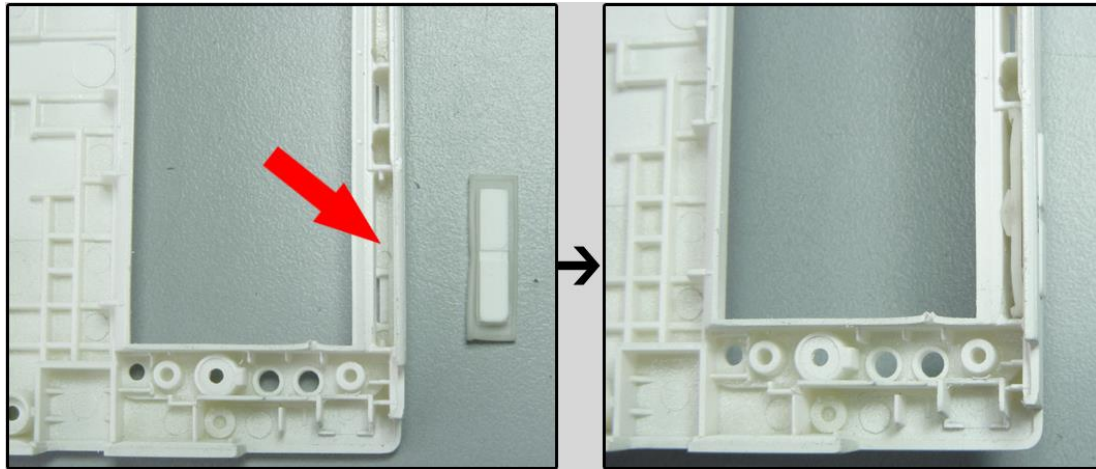
1. Eye-candy shell parts.



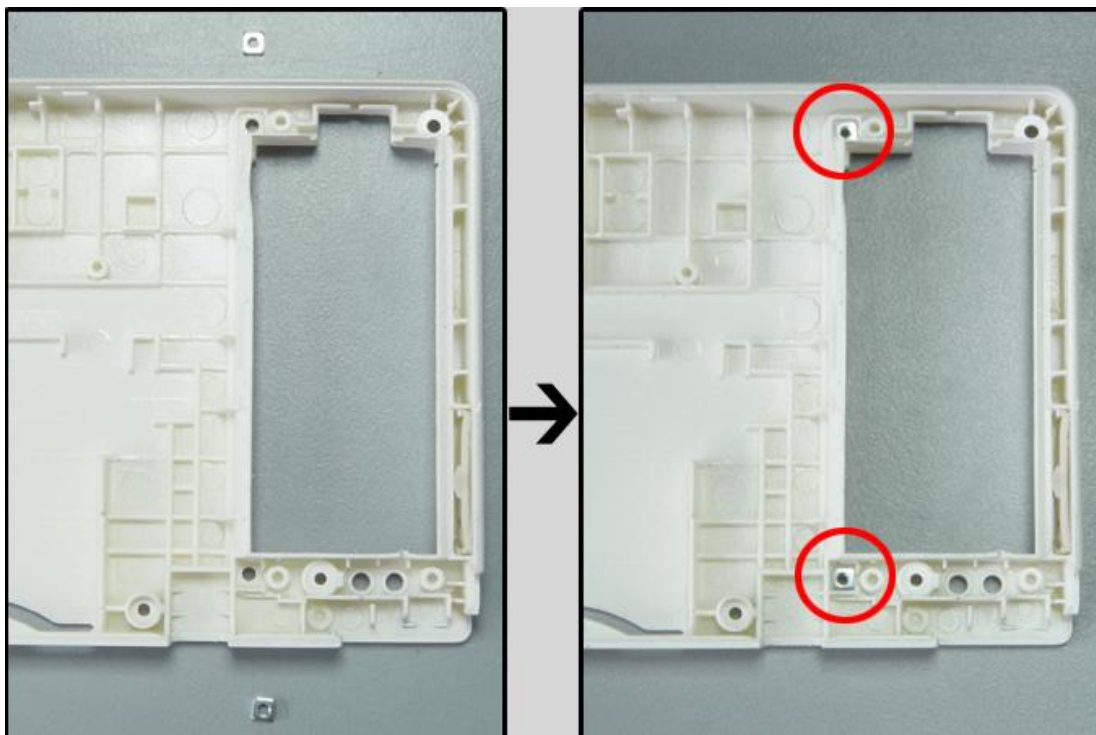
2. put in the SD card shell and then place the metal plate to the arrow indicated position.



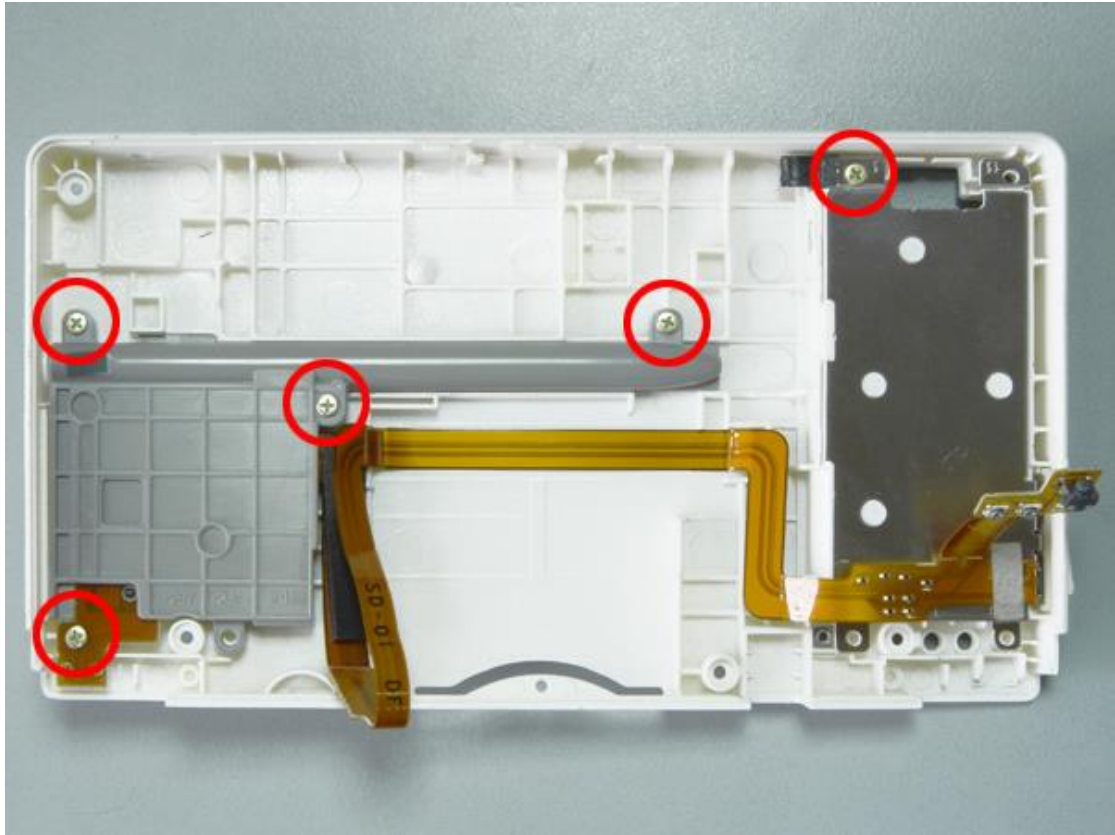
3. Put the volume switch to the arrow indicated position.



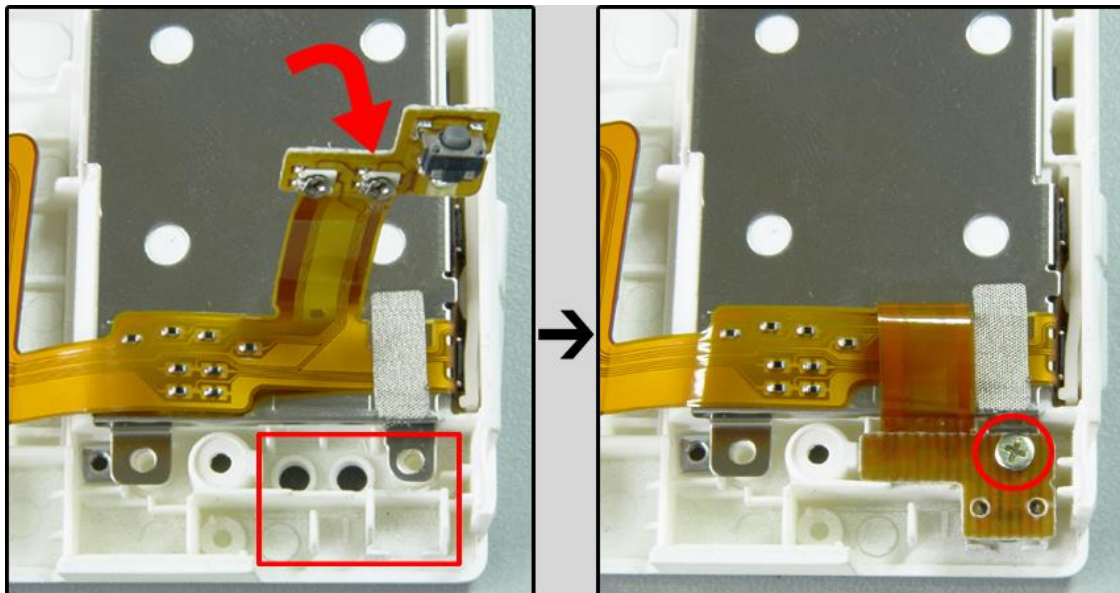
4. place the female screw nuts to the circle indicated position.



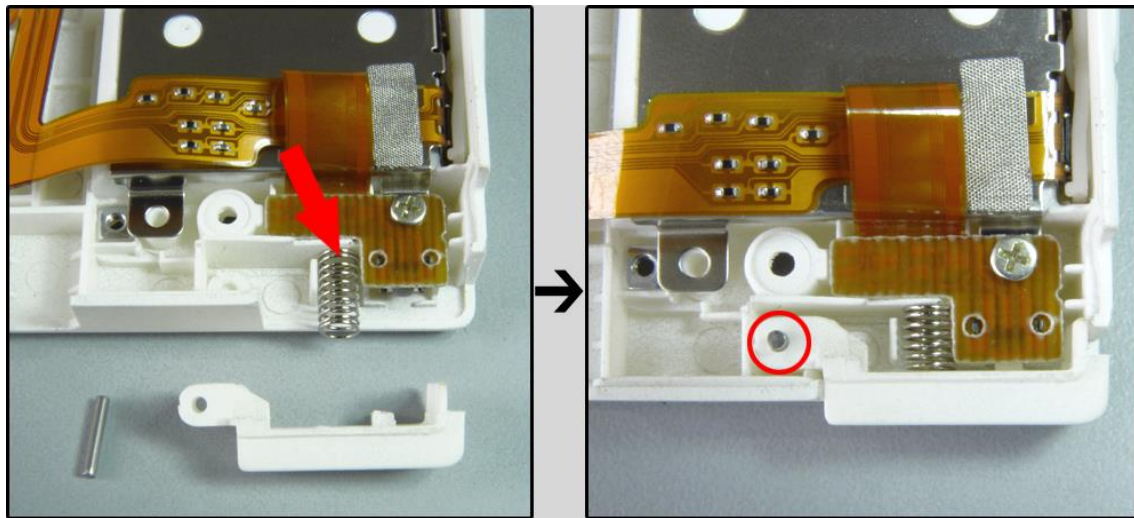
5. Place the parts to the lower part of bottom shell then fasten them with screws.



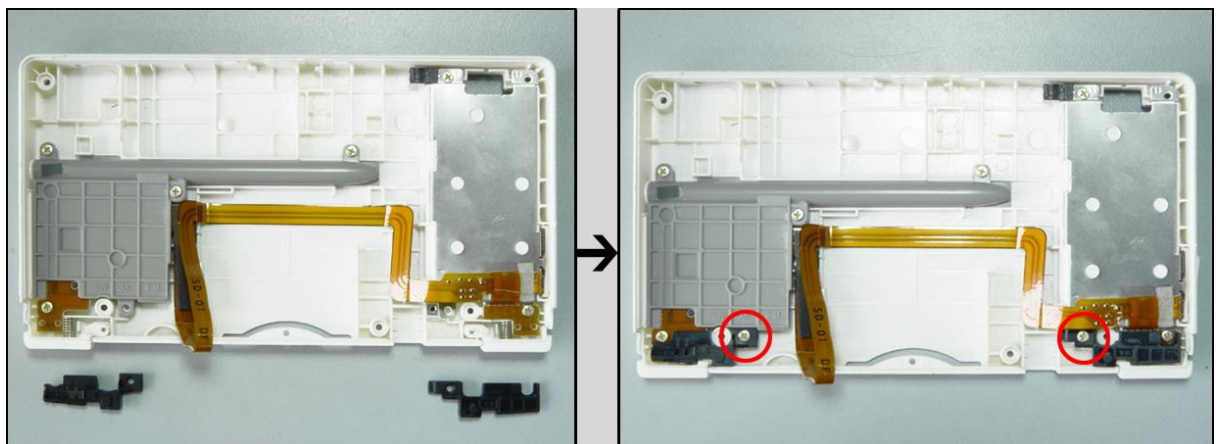
6. Place the R button switch board to the red square position then fasten it with screw.



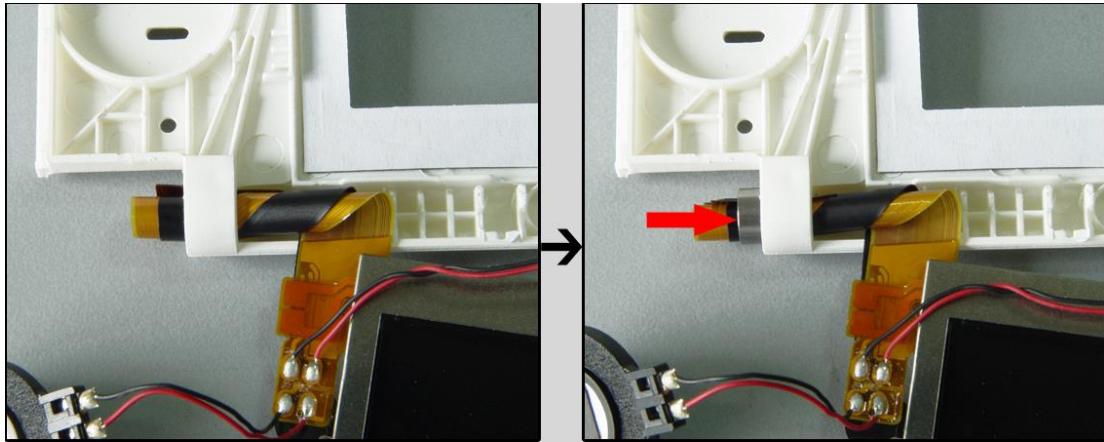
7. Place the spring to the arrow indicated position, put on the R button and insert that small iron rod to fix the part. (do the same job for the L button).



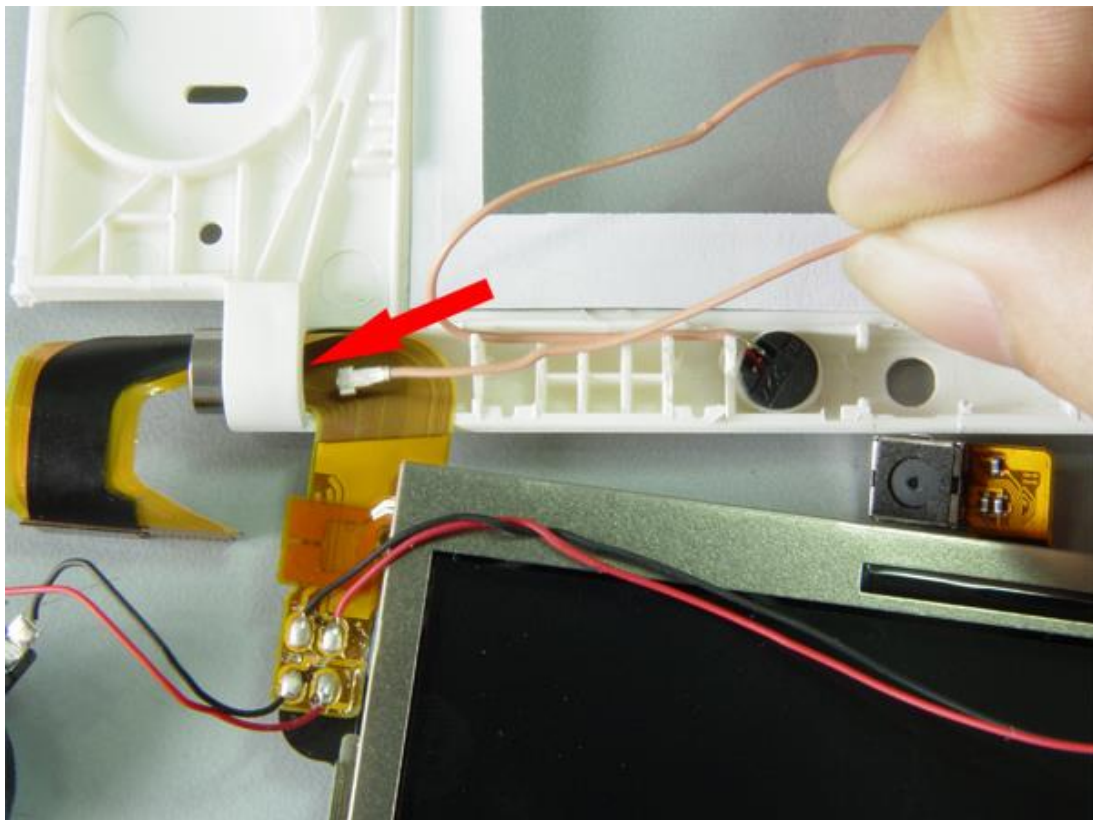
8. As shown on the picture, put on the R and L plastic brace and fasten them with screws.



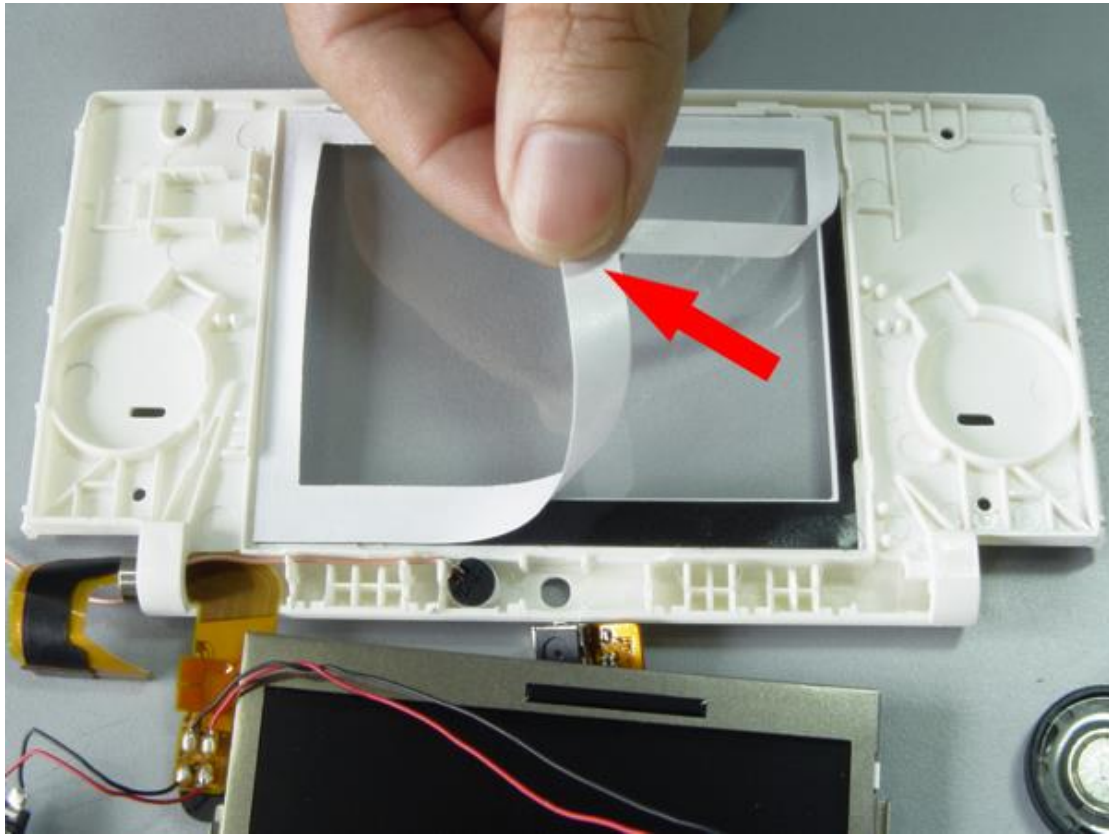
9. Roll up the flat wire and insert it into the upper led panel cover, and put the ring to the arrow position.



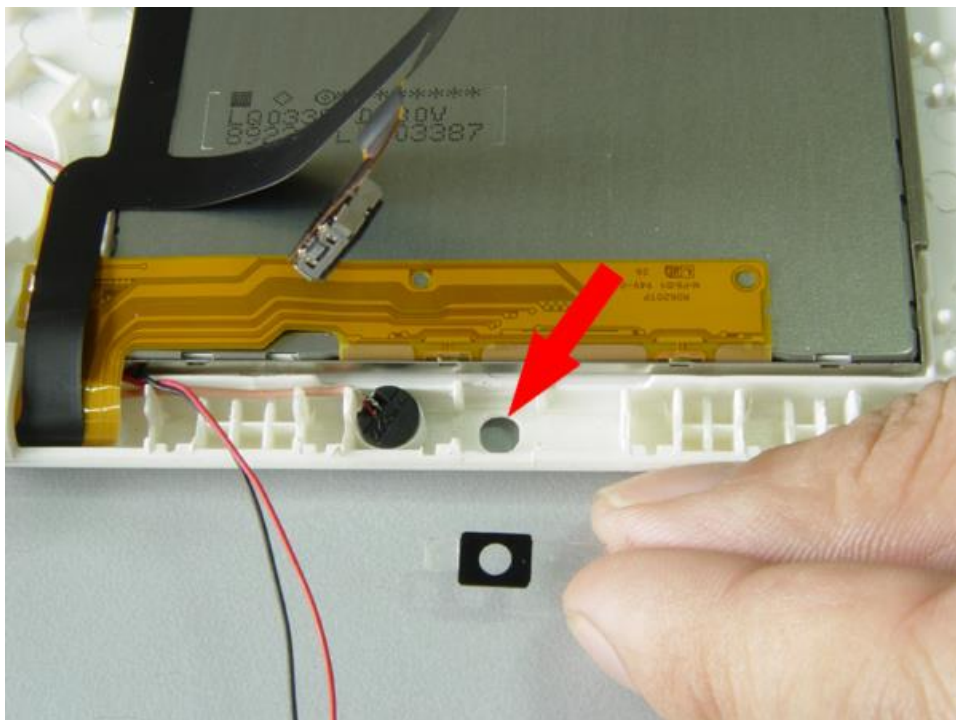
10. place the microphone to its position and insert the microphone wire through the hole and the ring.



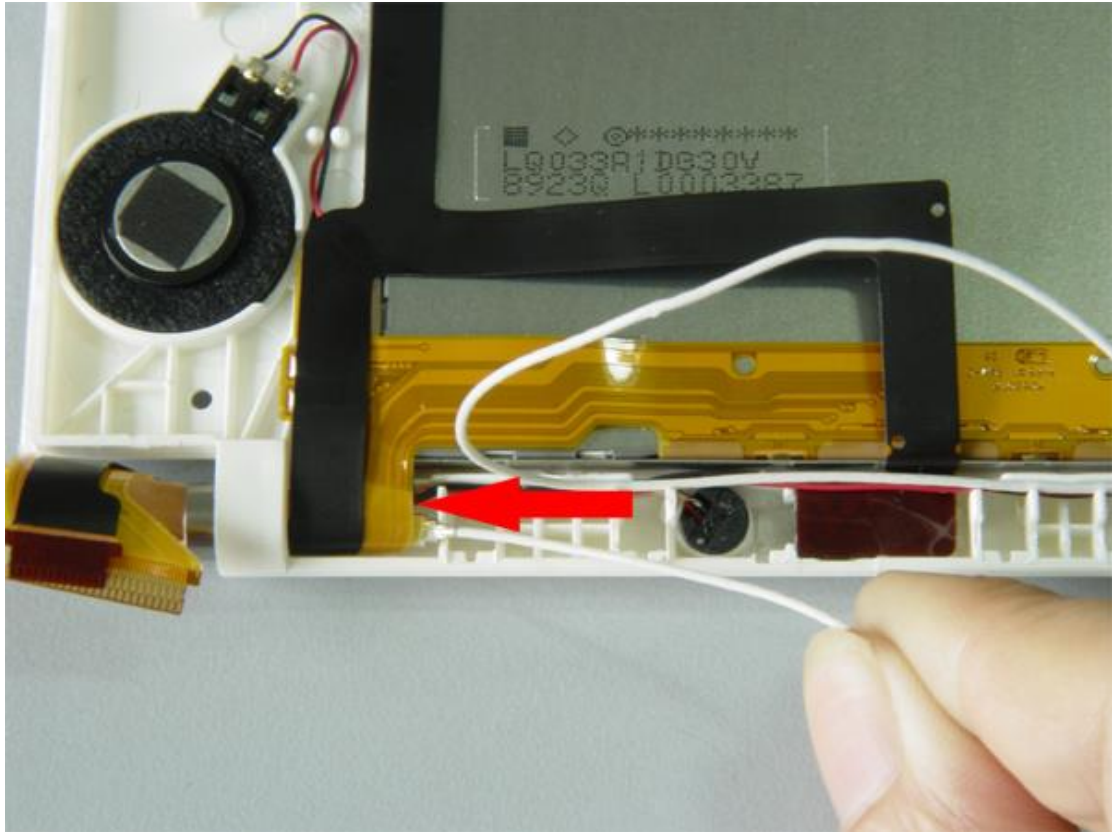
11.Remove the sticker sheet.



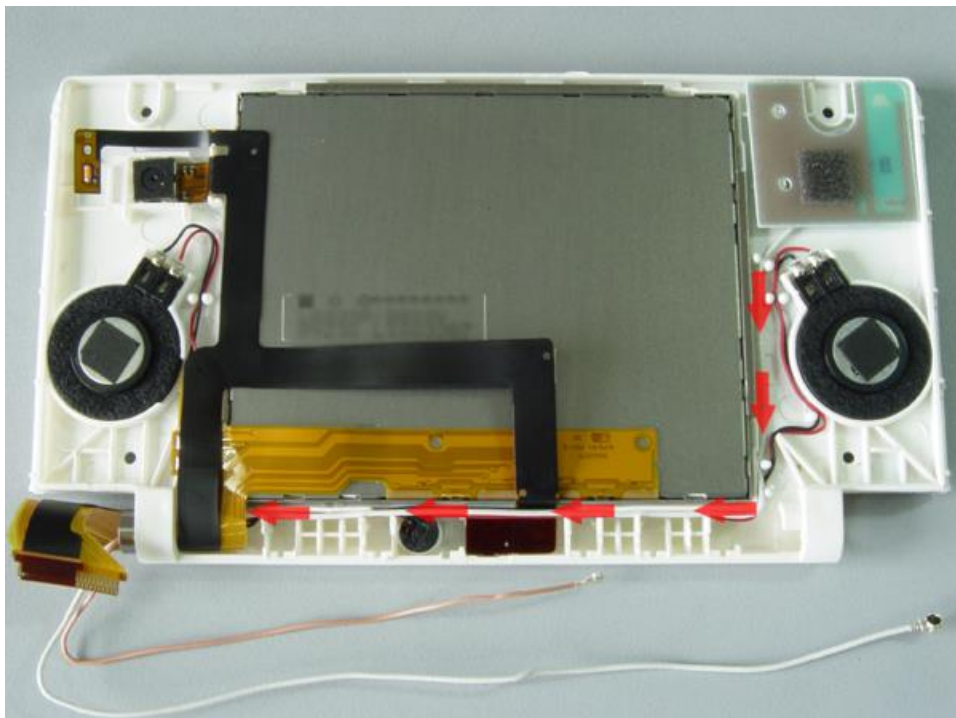
12.put on the LED to the upper shell then place the camera's protective plate to the arrow position.



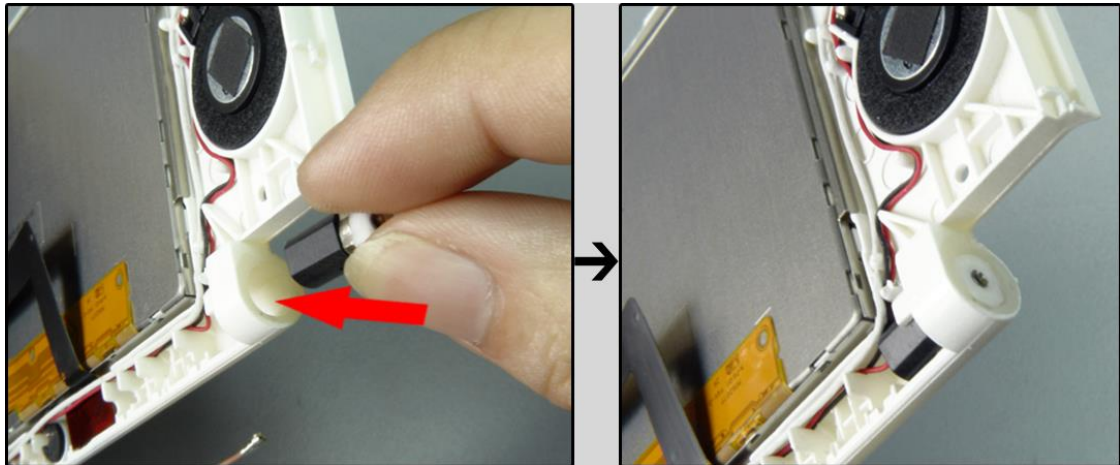
13.slip the white antenna wire through the cavity.



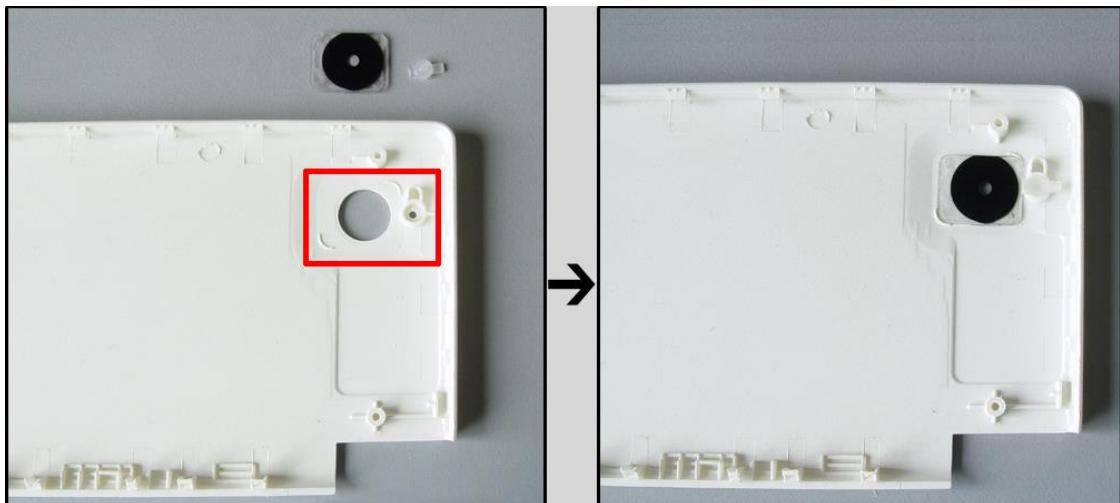
14.according to the direction of the arrow to place the microphone wire and antenna wire.



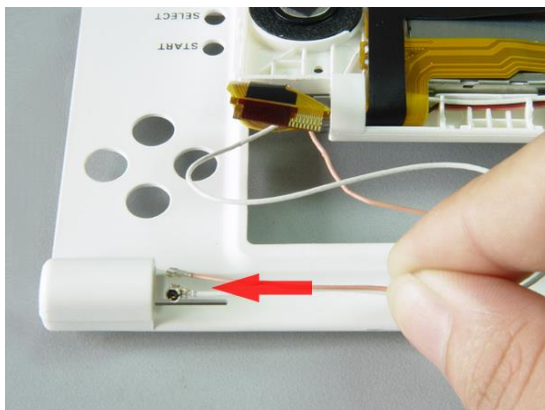
15.put the spindle to the arrow position.



16.As shown on the picture, put the camera's protective lens and the light tube to the bottom part of upper shell.

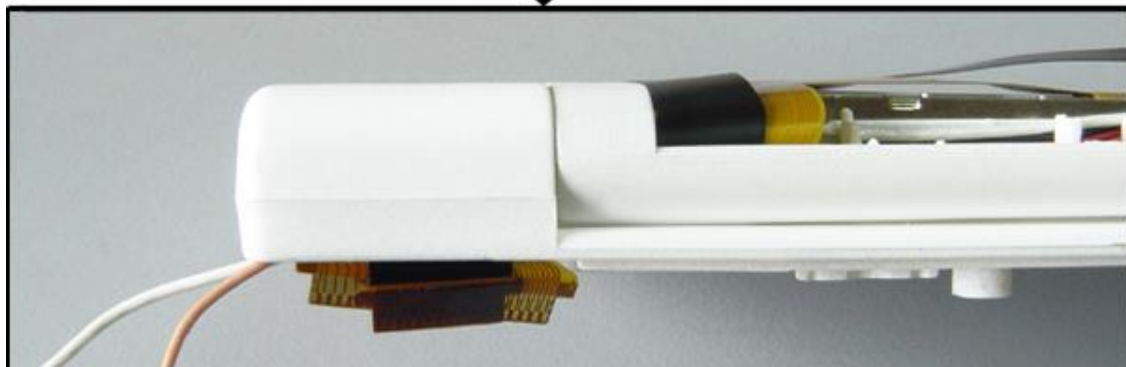
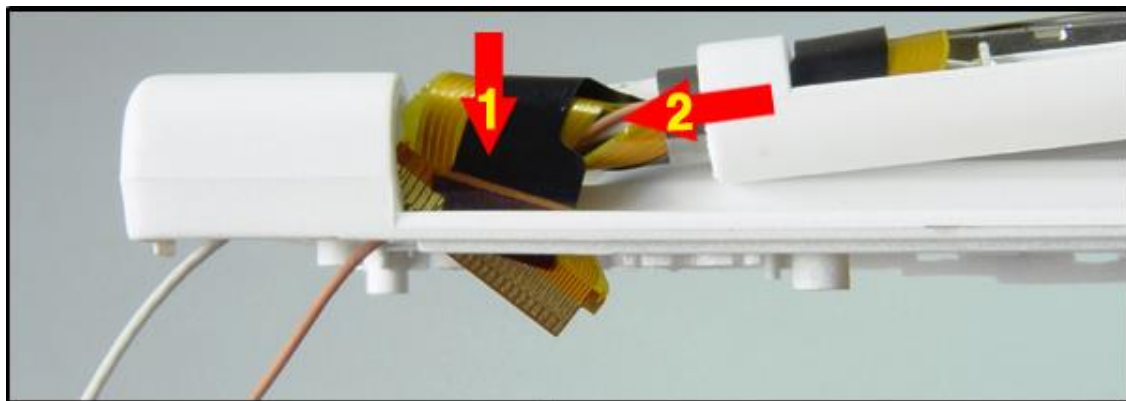


17.insert the antenna wire and microphone wire to pass through the console's lower part LED panel cover.

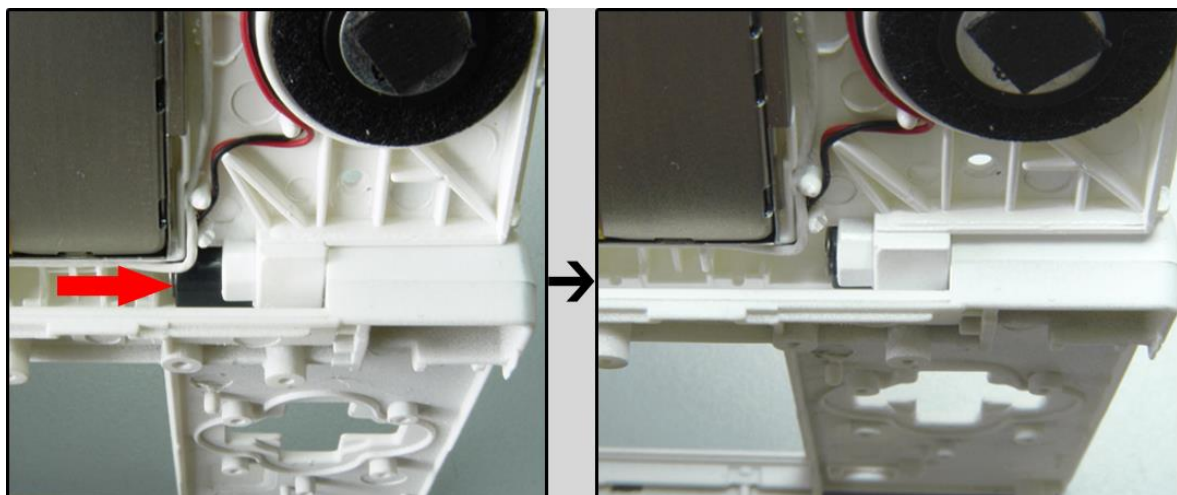




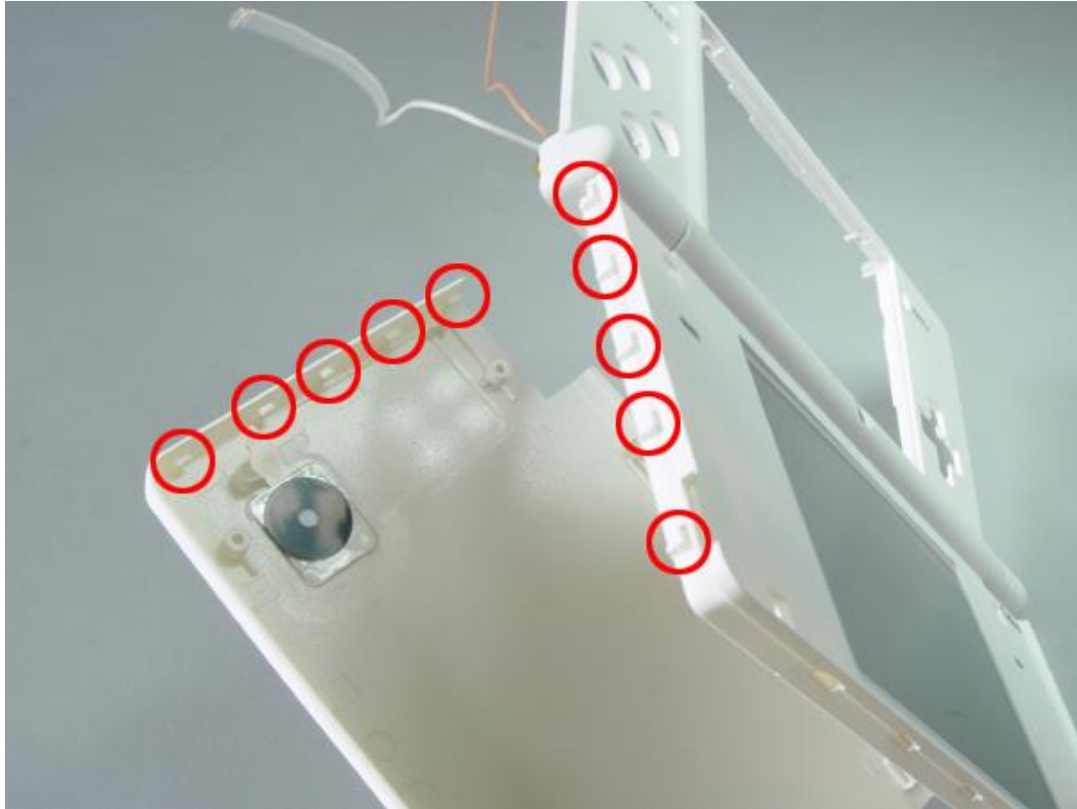
18. Insert the flat cable to pass through the shell (arrow 1 indicated) then slowly push the upper LED front shell (as shown on the arrow 2) for closing it.



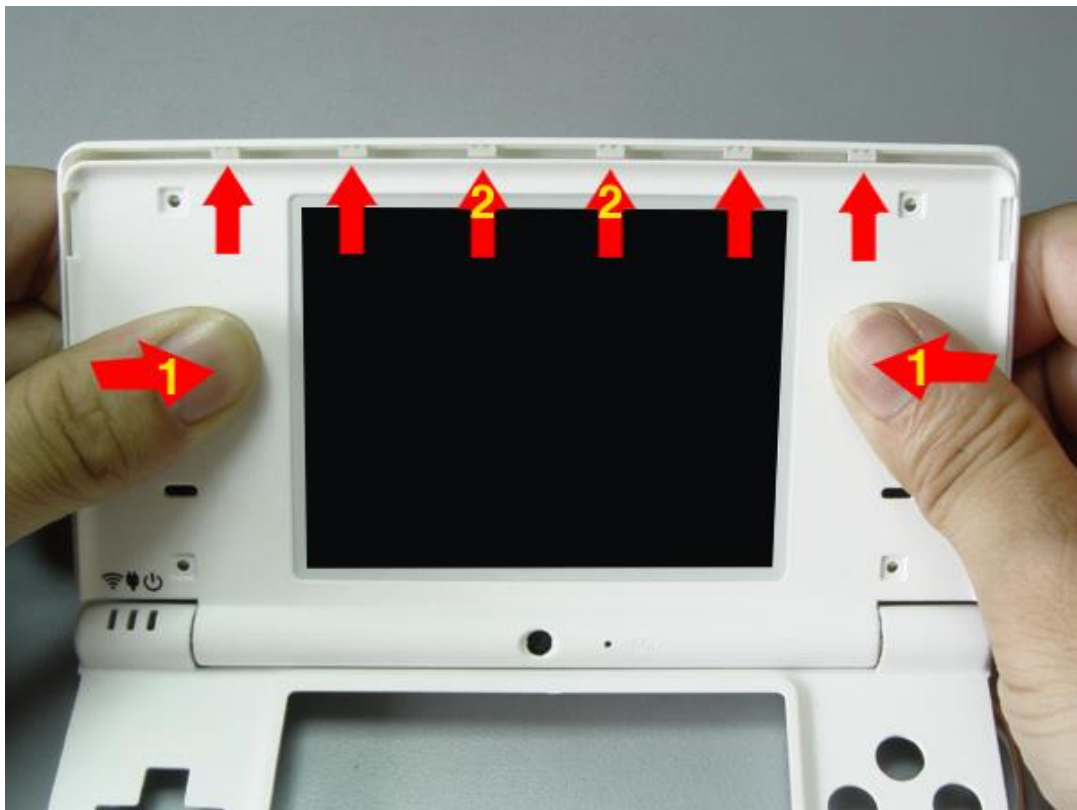
19. According to the arrow direction, insert the spindle.



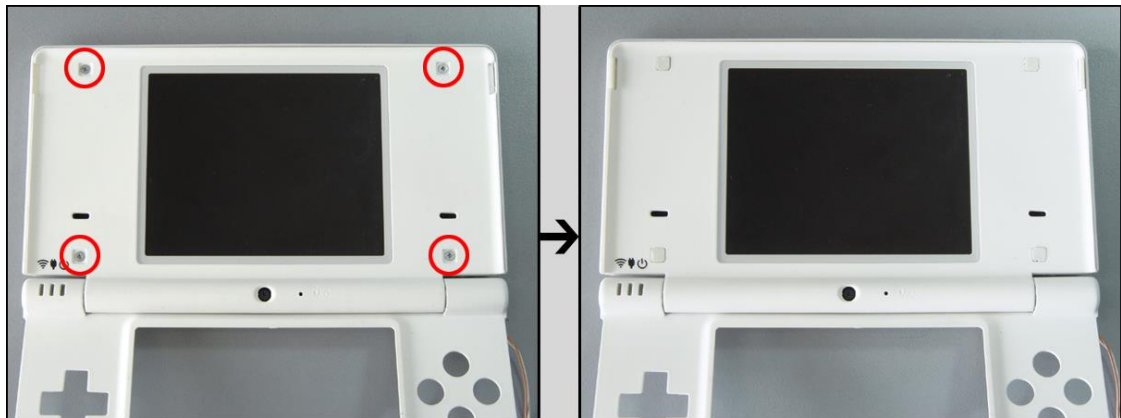
20. Buckle the upper LED panel cover and its bottom shell



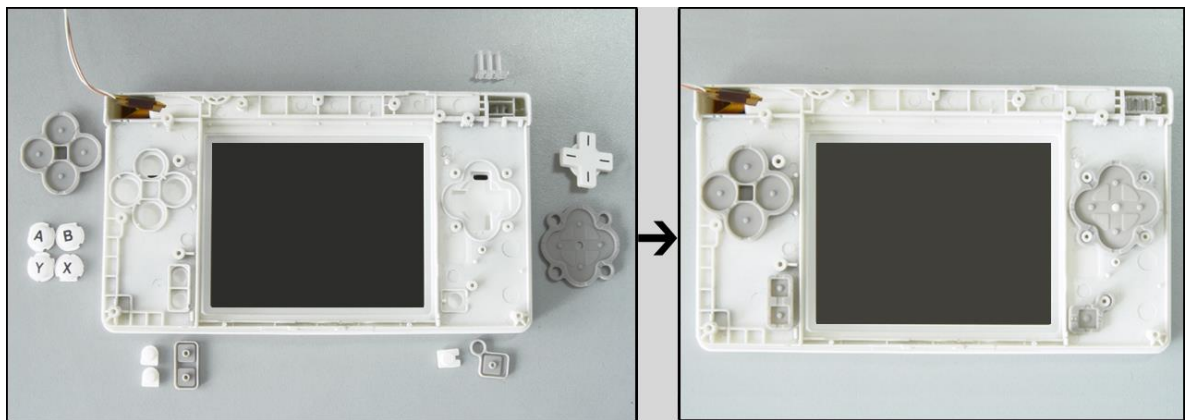
21. Follow the arrow direction to put on the upper part of LED panel cover.



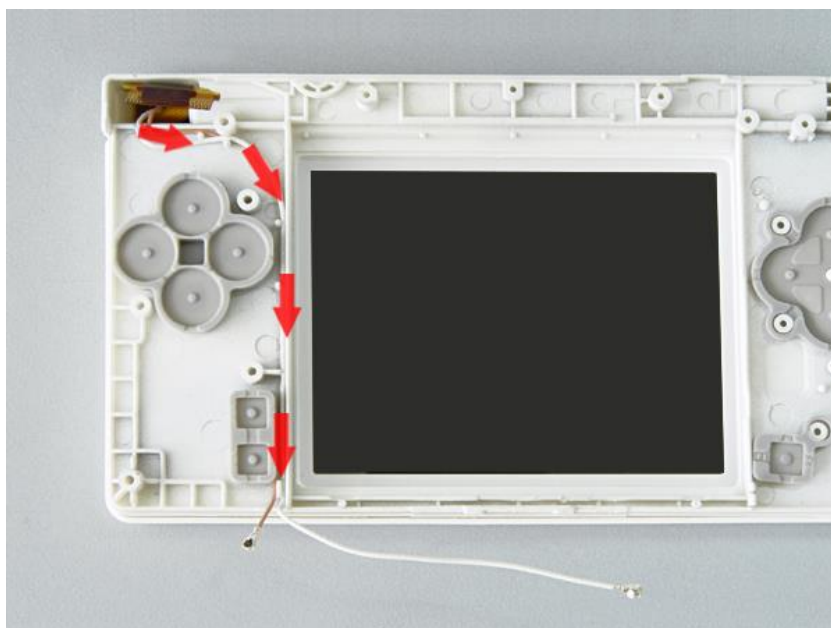
22.Screw these 4 screws and put on the rubber screw caps.



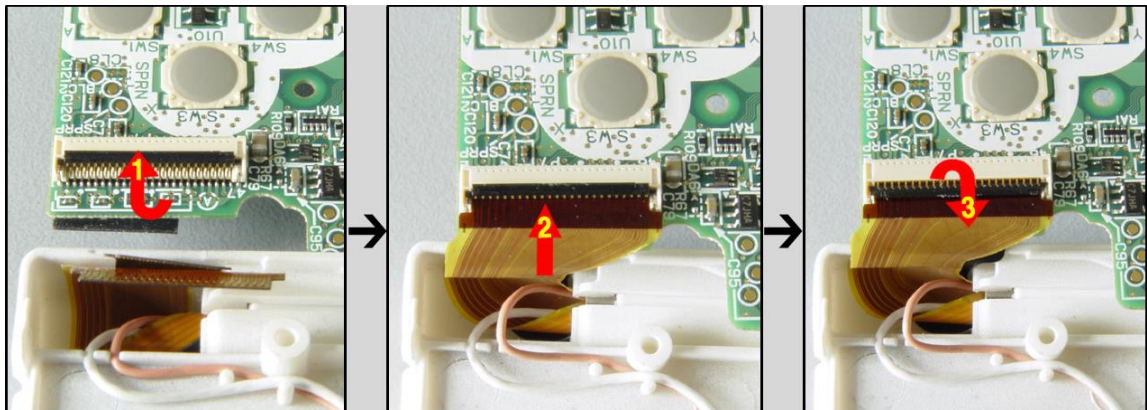
23.Put on those parts to the lower part of LED panel cover.



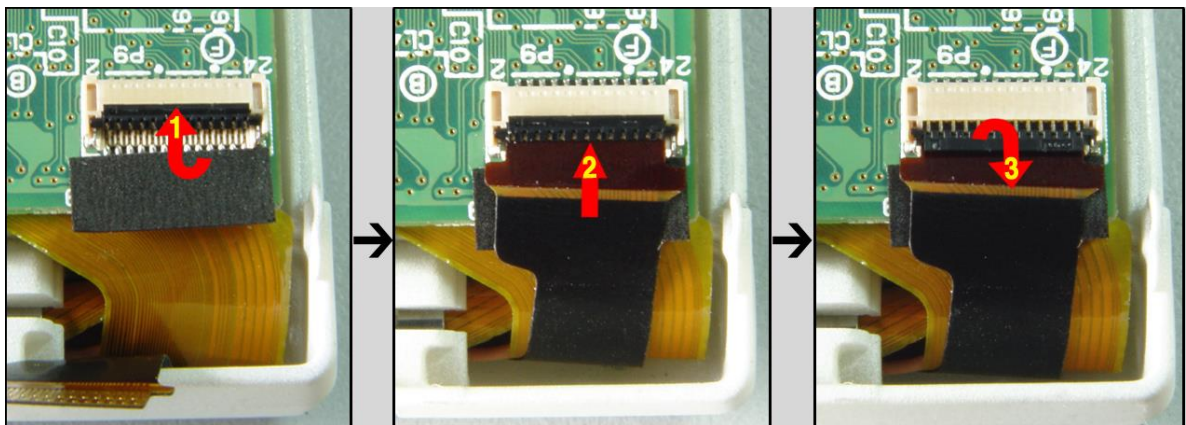
24.Follow the arrow direction to place the antenna wire and microphone wire.



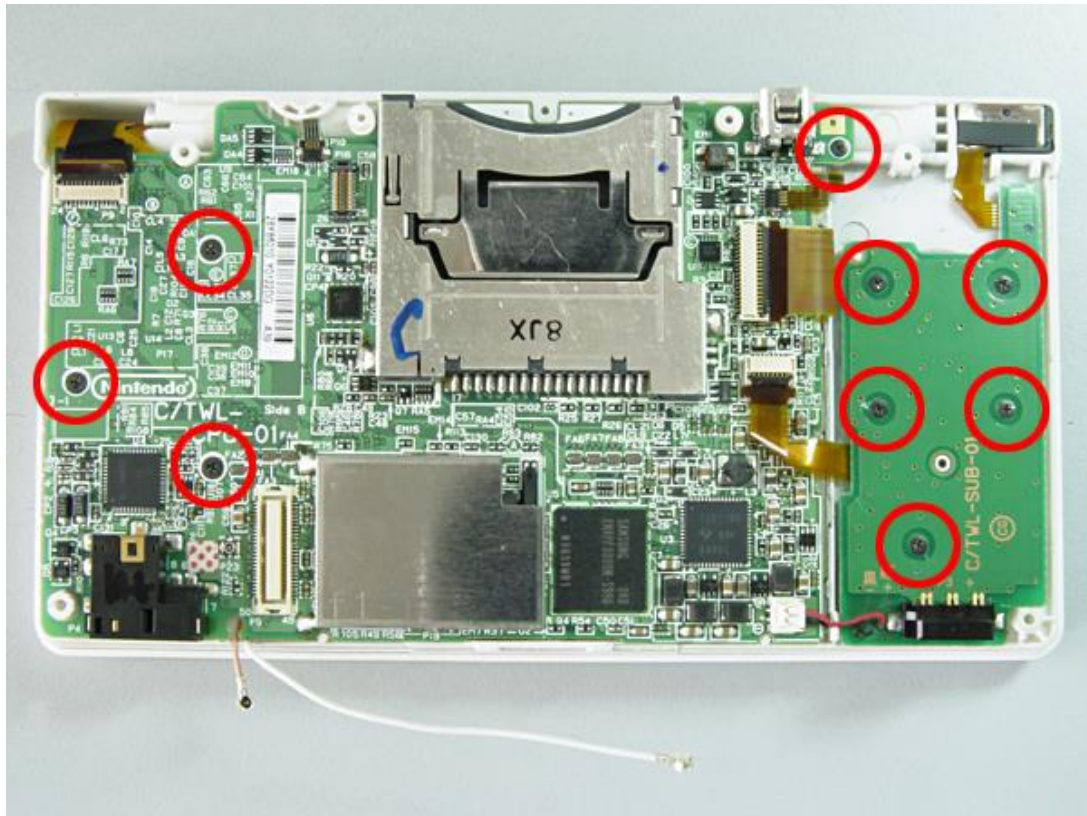
25. Follow the arrow direction (1) to flip black bar and insert the obverse side of flat wire (as shown on the arrow 2), after that put down the black bar to hold the flat wire.



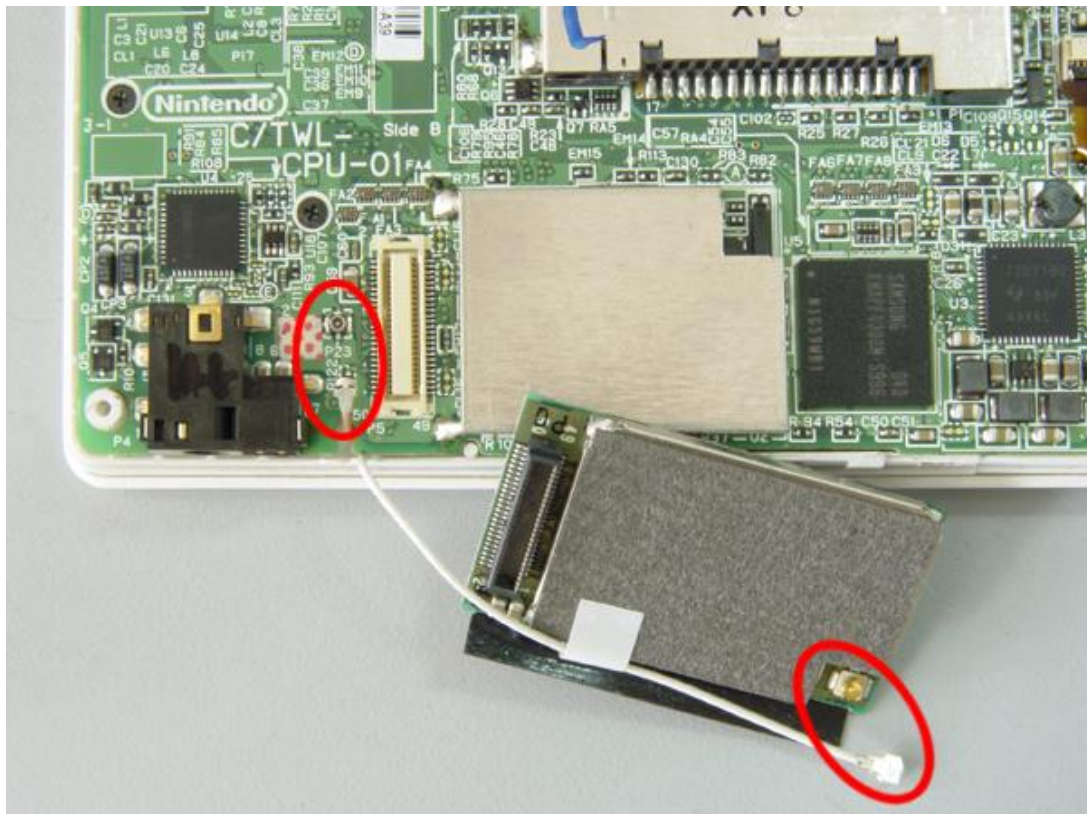
26. Follow the arrow direction (1) to flip black bar and insert the reverse side of flat wire (as shown on the arrow 2), after that put down the black bar to hold the flat wire.



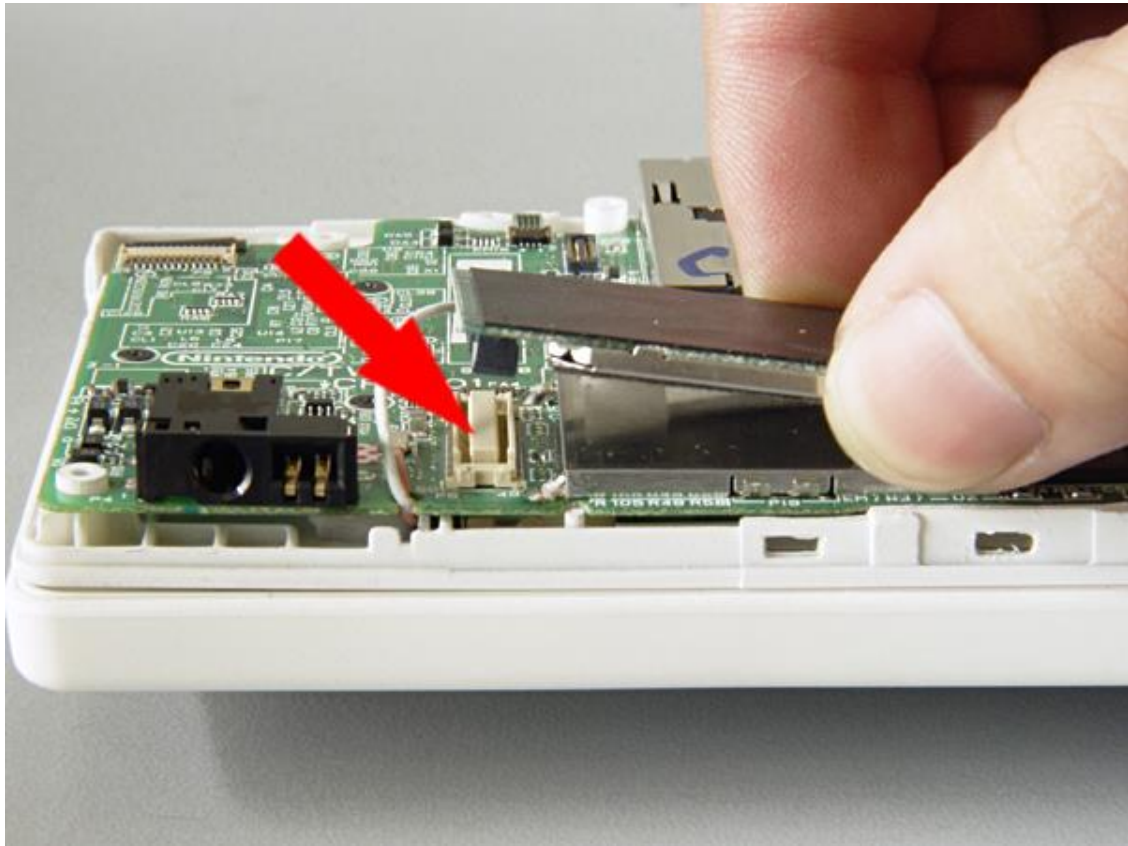
27. Put on the PCB then re-screw those 9 screws.



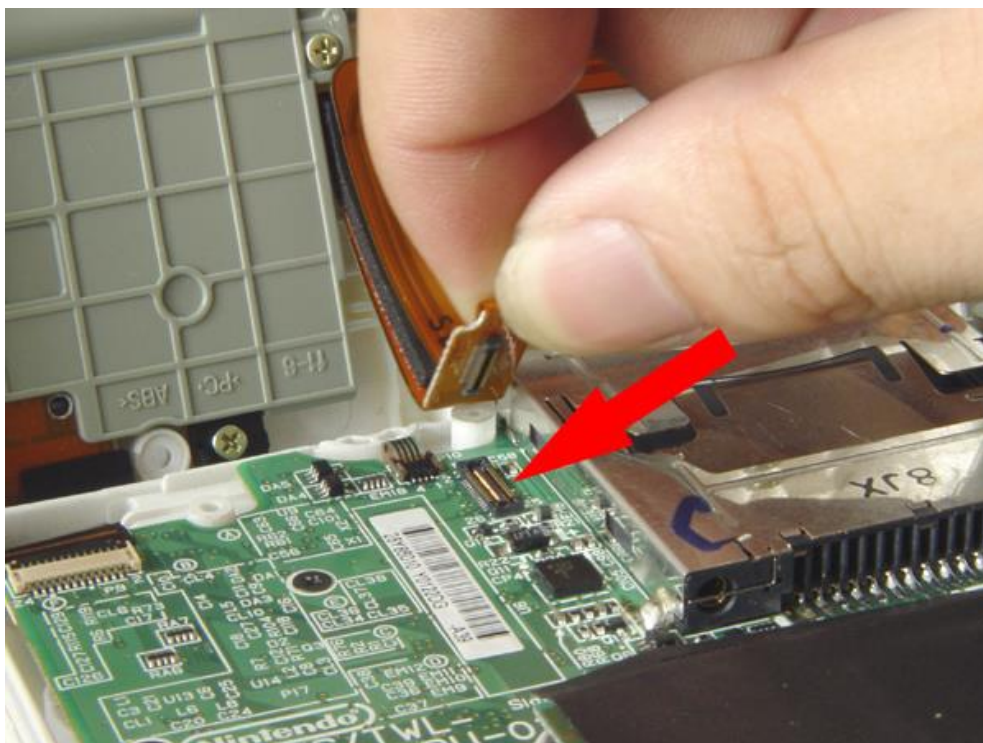
28. plug the microphone wire and antenna wire to the indicated socket.



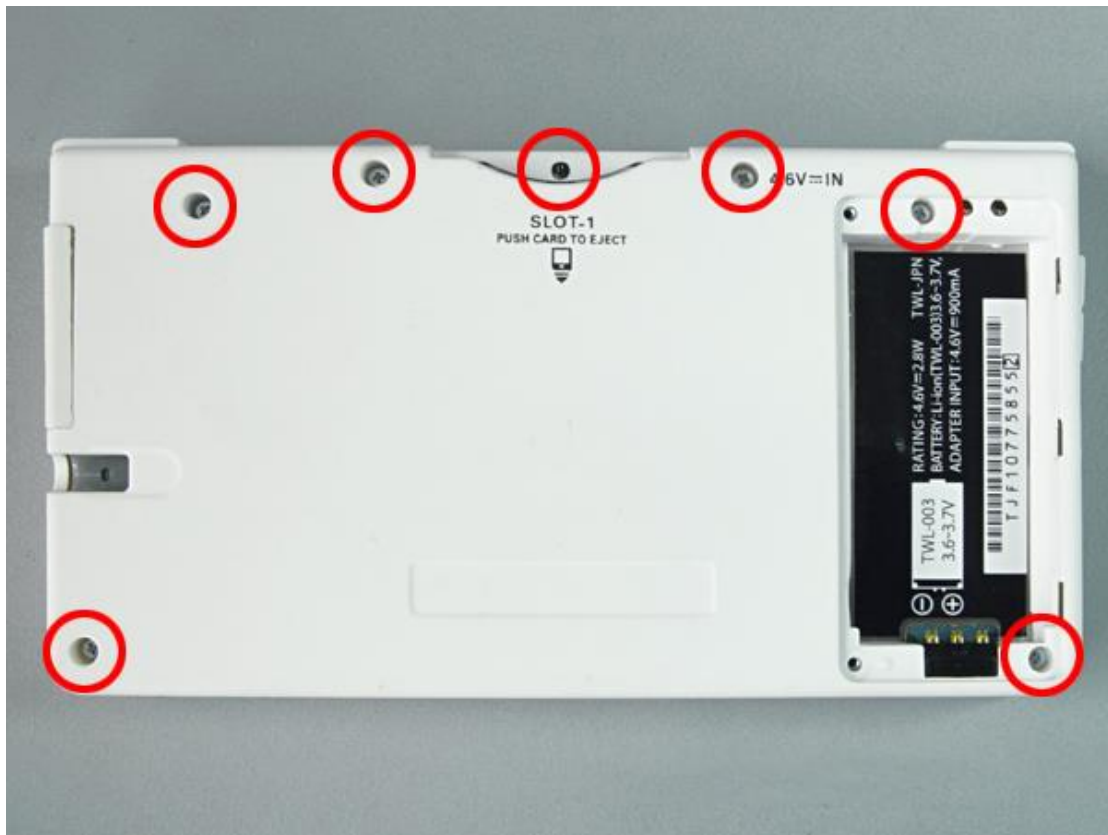
29.As shown on the picture, plug the wifi card back to its seat.



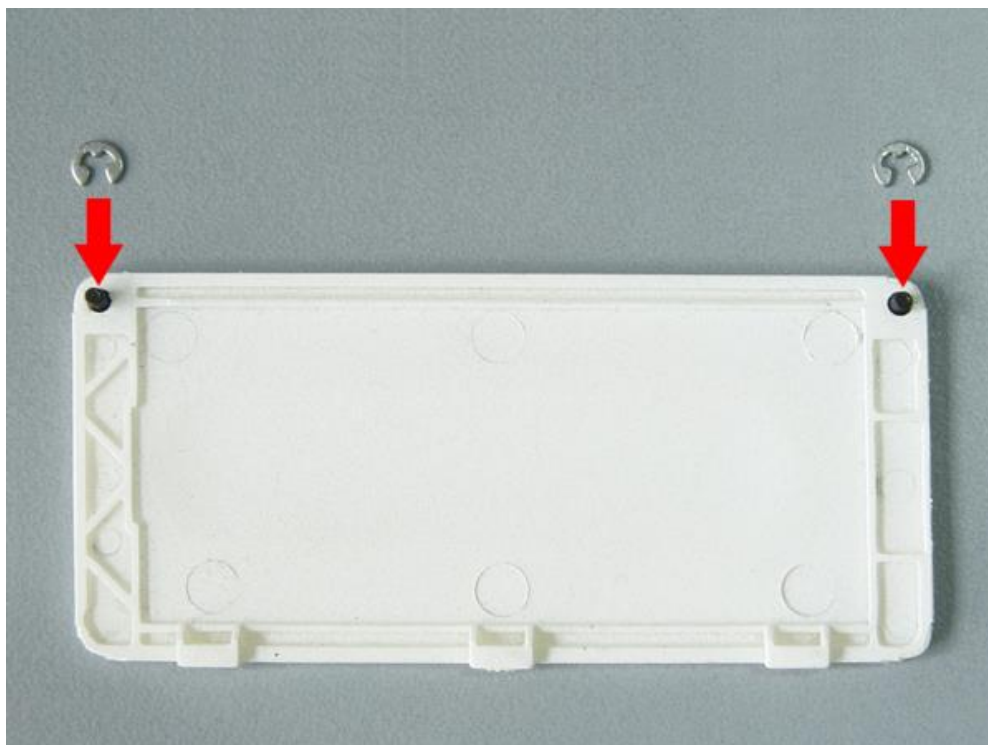
30.Plug this flat cable back to the socket.



31. Put on the lower part of bottom shell and re-screw those screws.



32. As shown on the picture, insert these 2 metal plate to the screws.



33. Put on the rubber tabs, battery, battery cover and re-screw it, the assembly of the console is finished.

