

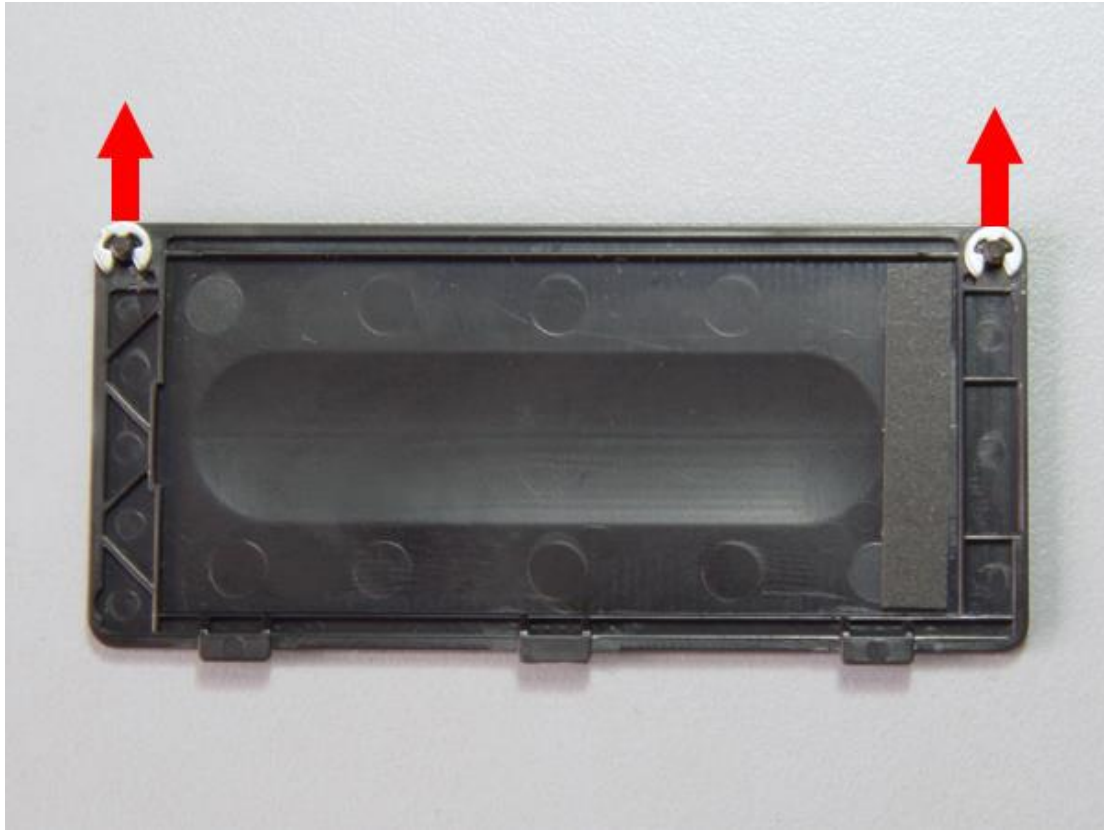
1.Remove these 2 rubber tabs,and using the Phillips screwdriver to open the battery cover.



2.Using the phillips screwdriver to remove all those screws.



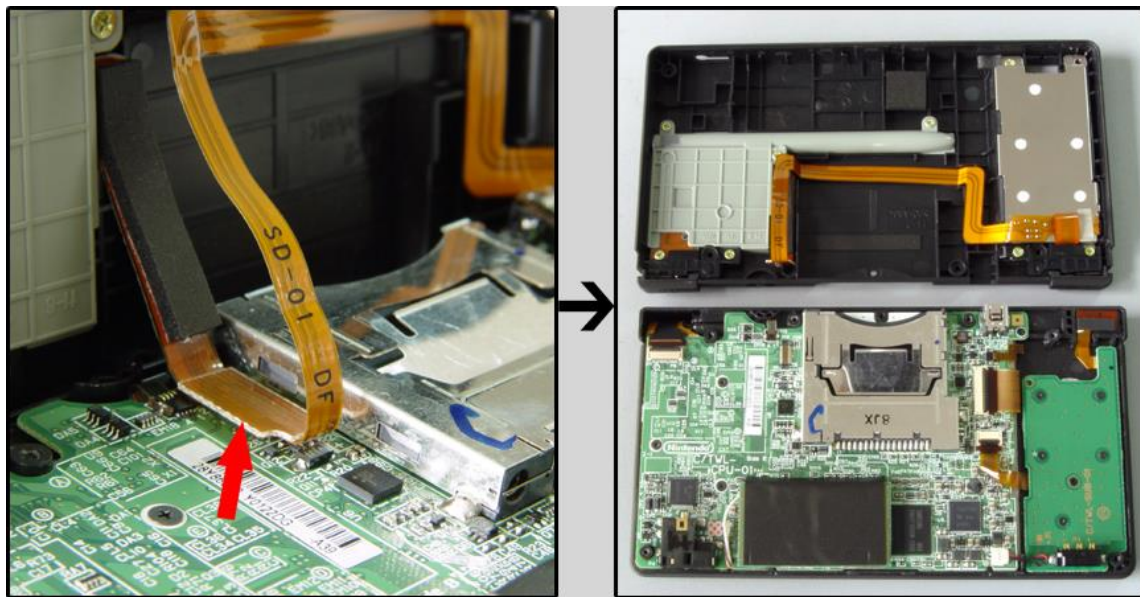
3.As shown on the picture, take off these 2 pieces metal plates.



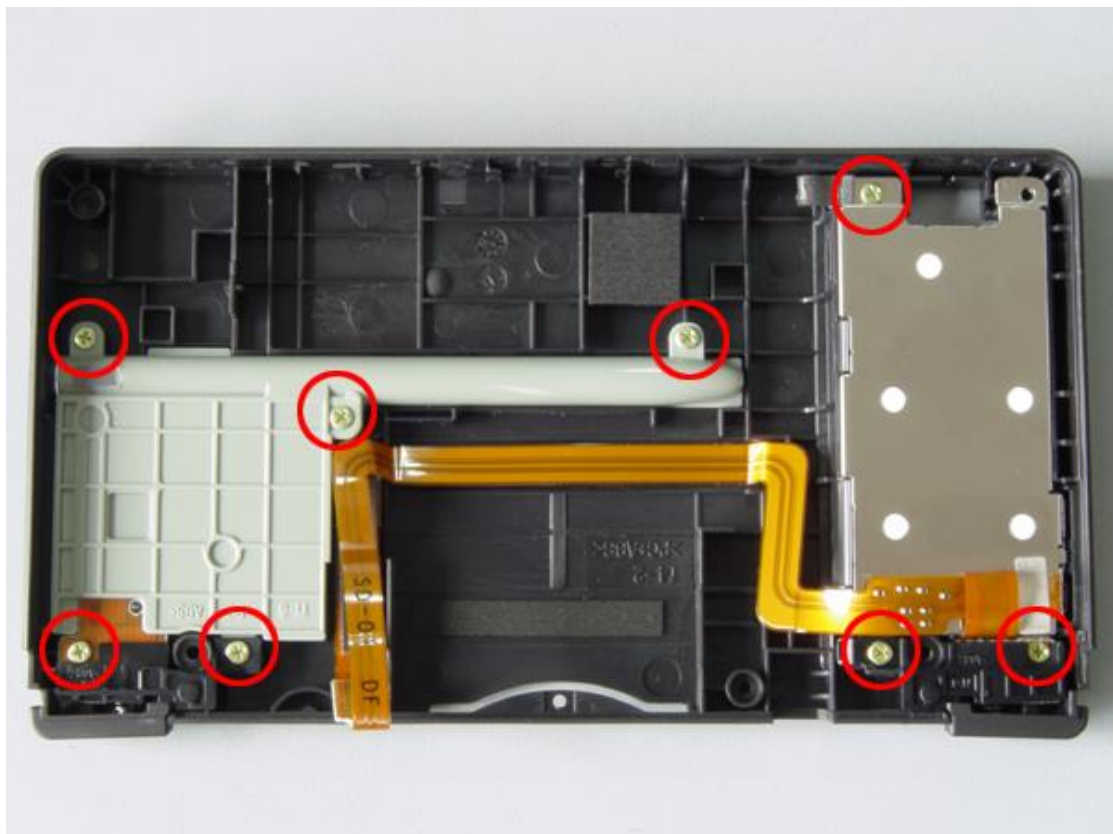
4.Open the bottom part of the console.



5. Unplug the cable to let the the bottom part of lower shell apart from the pcb.



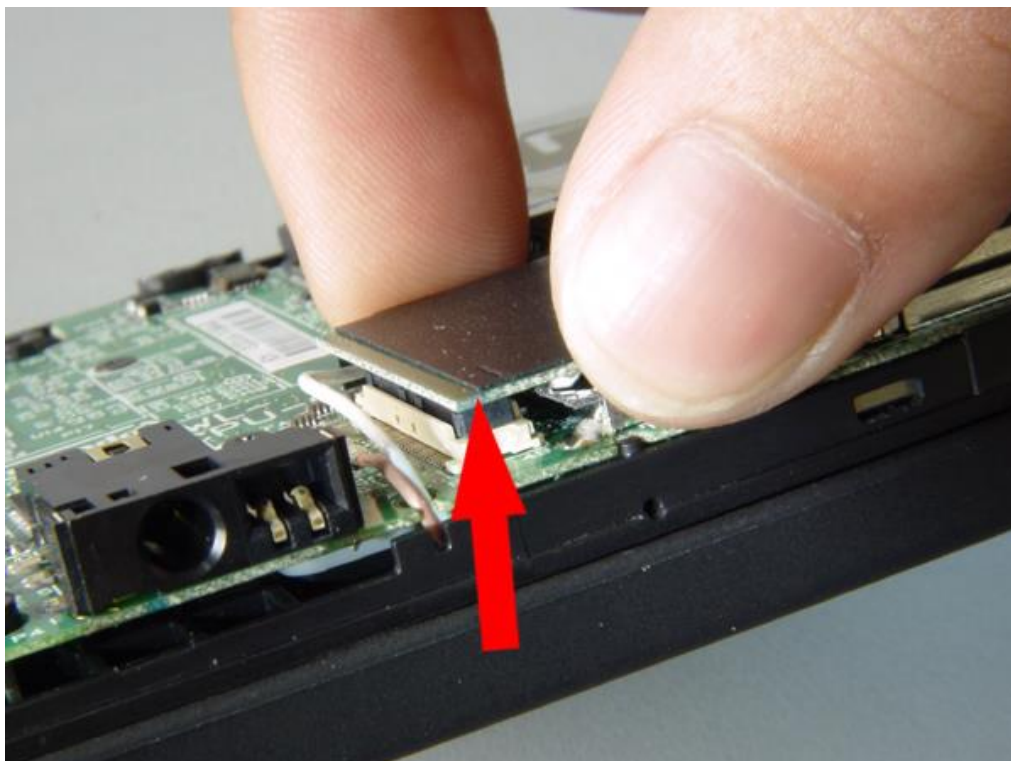
6. Remove 8 screws.



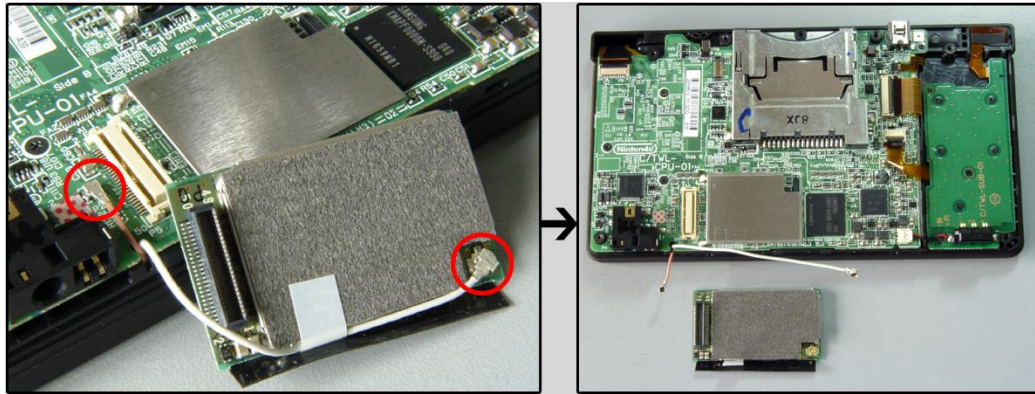
7.As shown on the picture, remove all the parts.



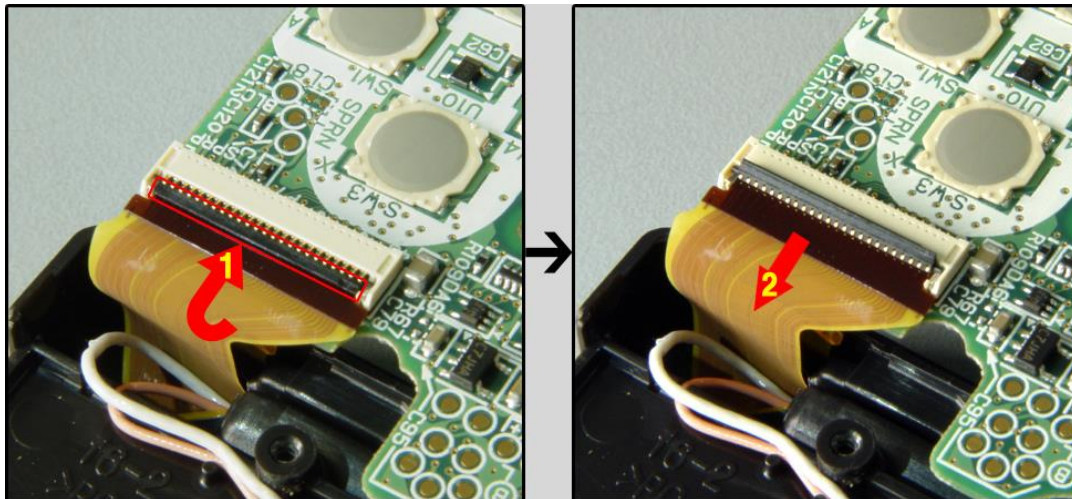
8.Unplug this wifi card from the socket.



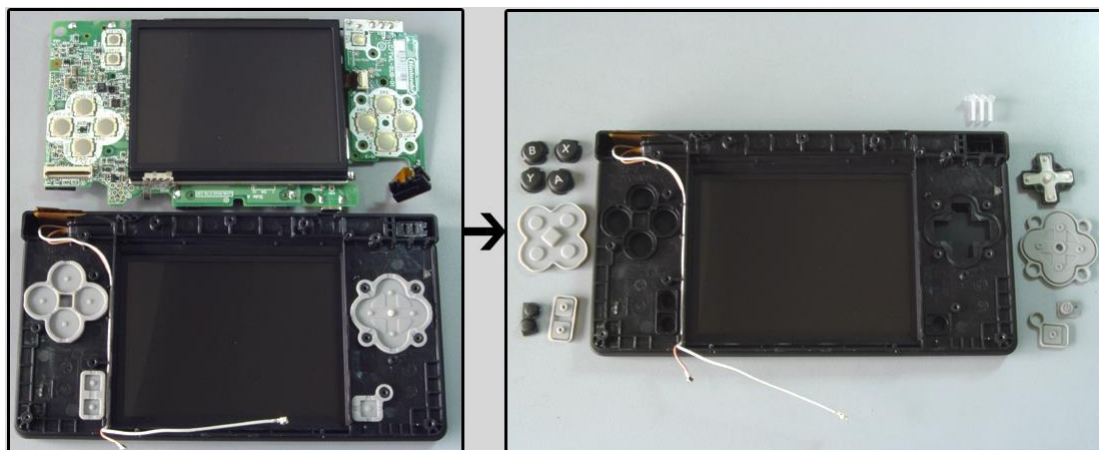
9. Unplug these 2 wires from the socket.



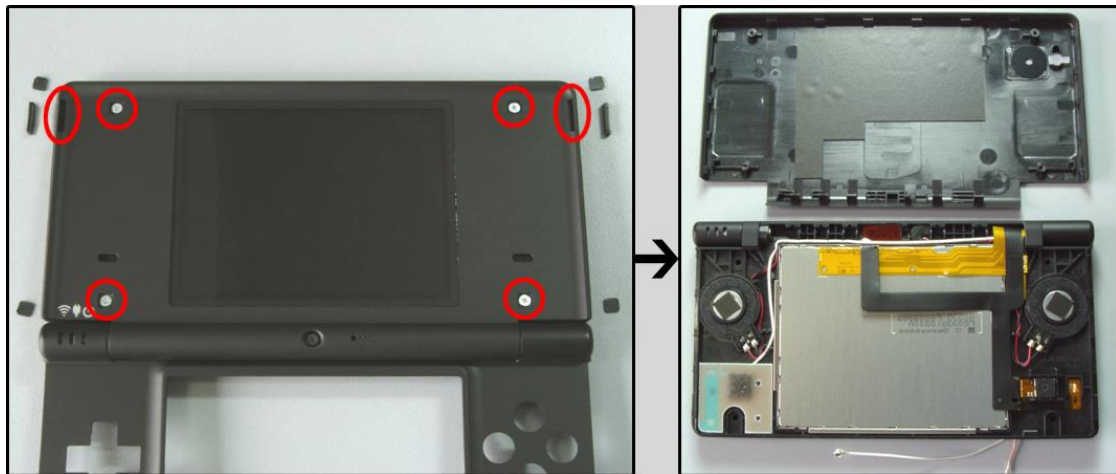
10. Follow the arrow direction 1 to unfold the socket then slowly to take out the flat cable (follow the arrow direction 2), and do the same job for the back of this part.



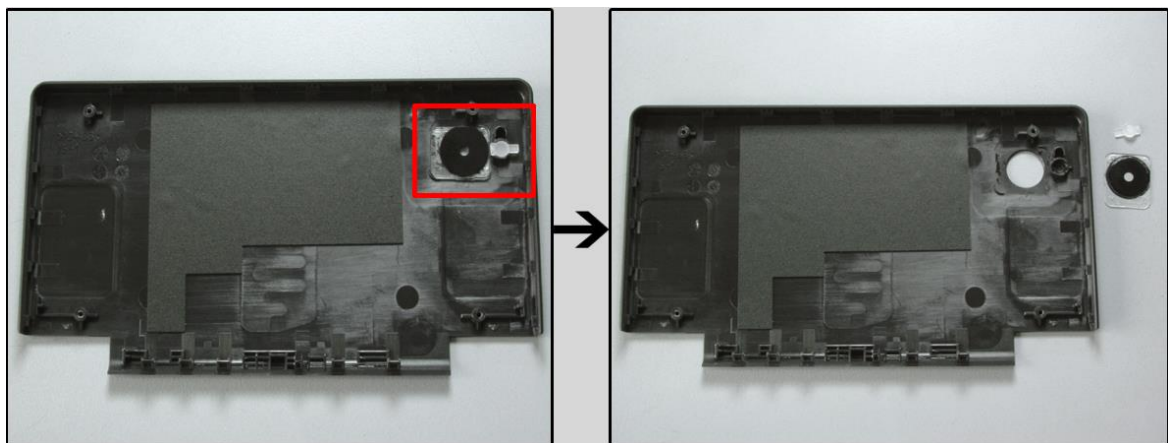
11. As shown on the picture, remove the PCB from the console's lower part of LED panel cover and take out all the parts.



12.Remove those rubber tabs and screws for moving apart the upper console's bottom part from the shell.



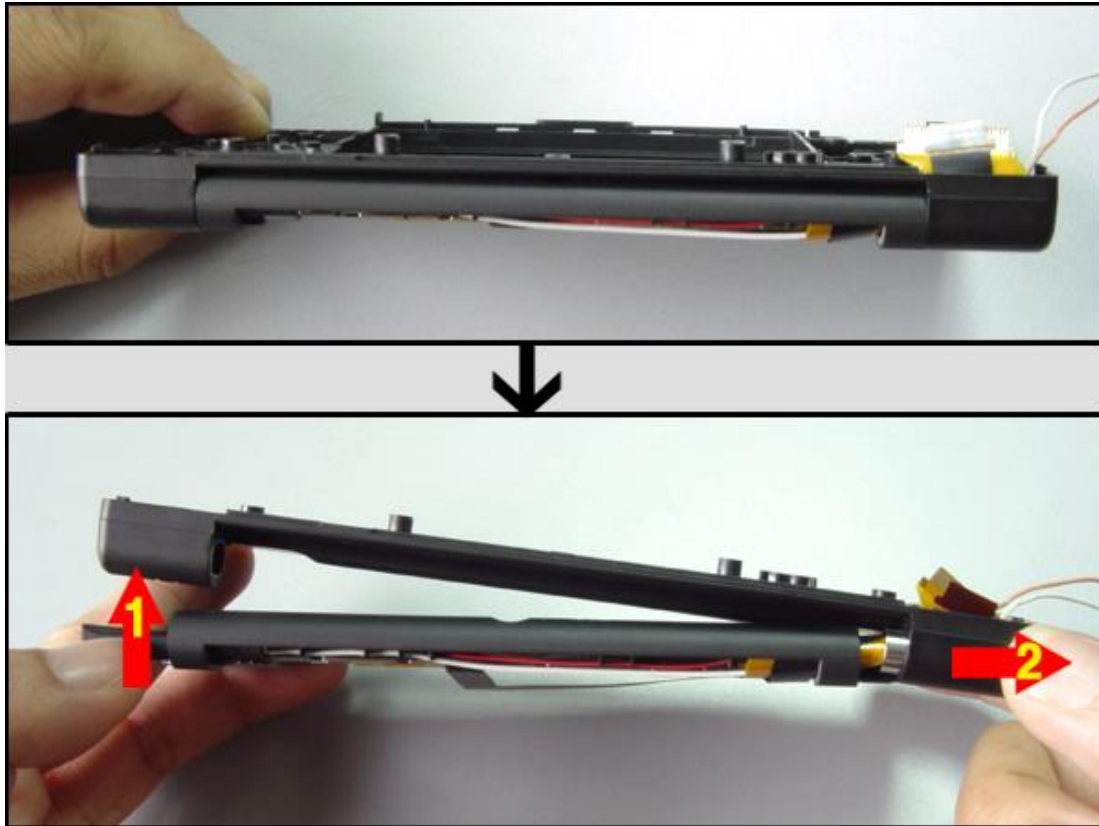
13.remove these 2 parts.



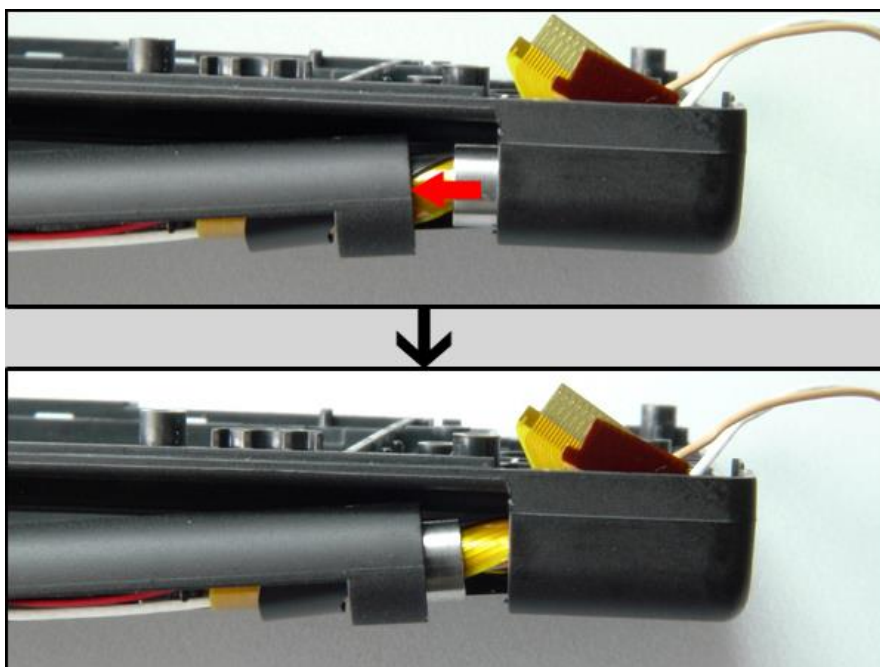
14.Follow the direction of arrow press down this part.



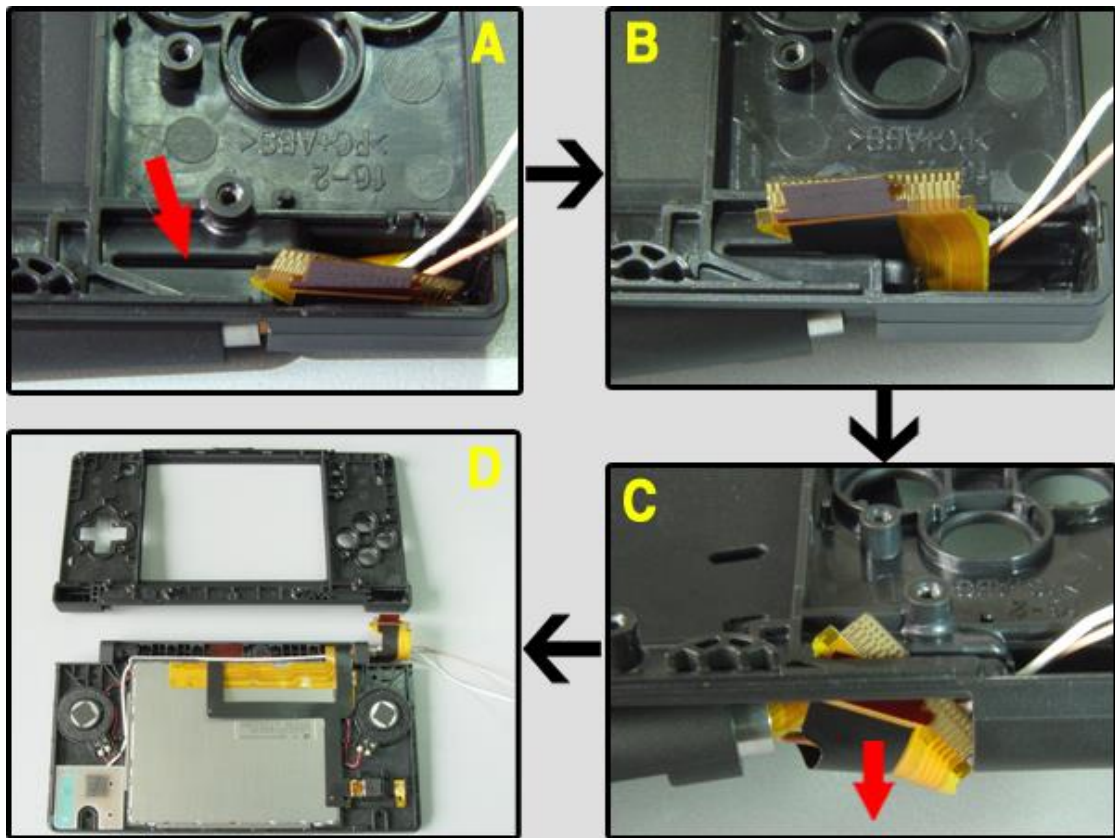
15. Follow the direction of arrow 1 to push up the console's lower part of LED panel cover, and slowly pull out the shell (follow the direction of arrow 2).



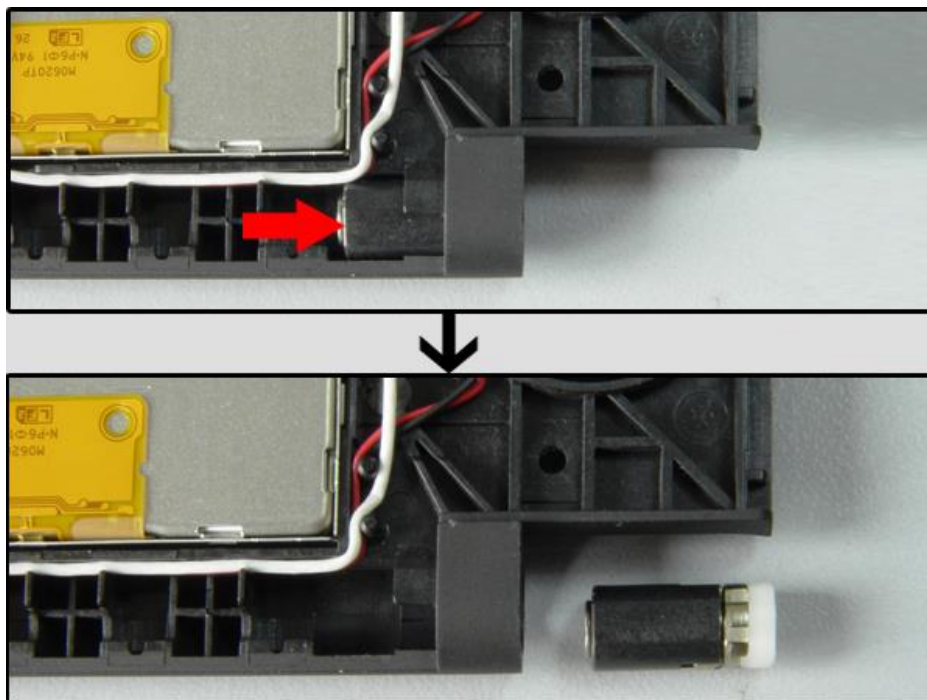
16. Push the ring from the console's lower part of LED panel cover to the console's upper part of LED panel cover



17. Put the flat cable to the notch (arrow indicates) then slowly pull out the cable from the notch (Picture C), now two parts is separate (Picture D) .

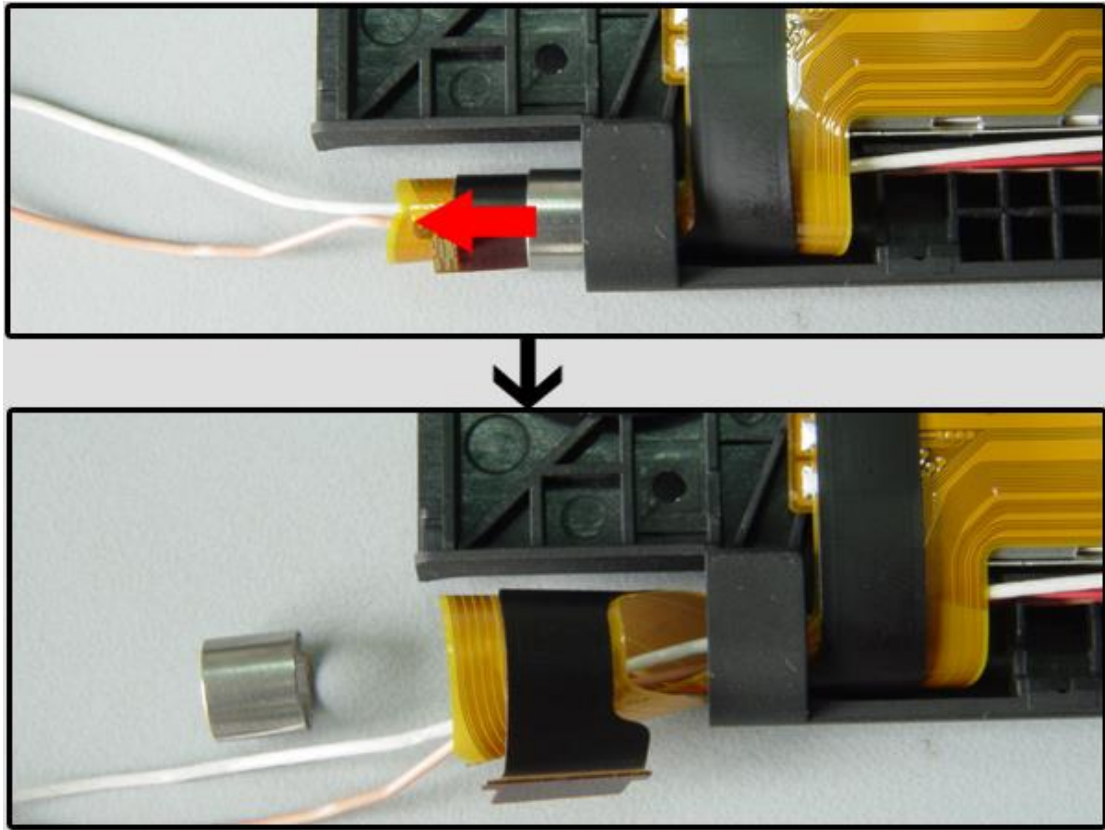


18. Follow the arrow direction to slip the Angle adjuster apart.





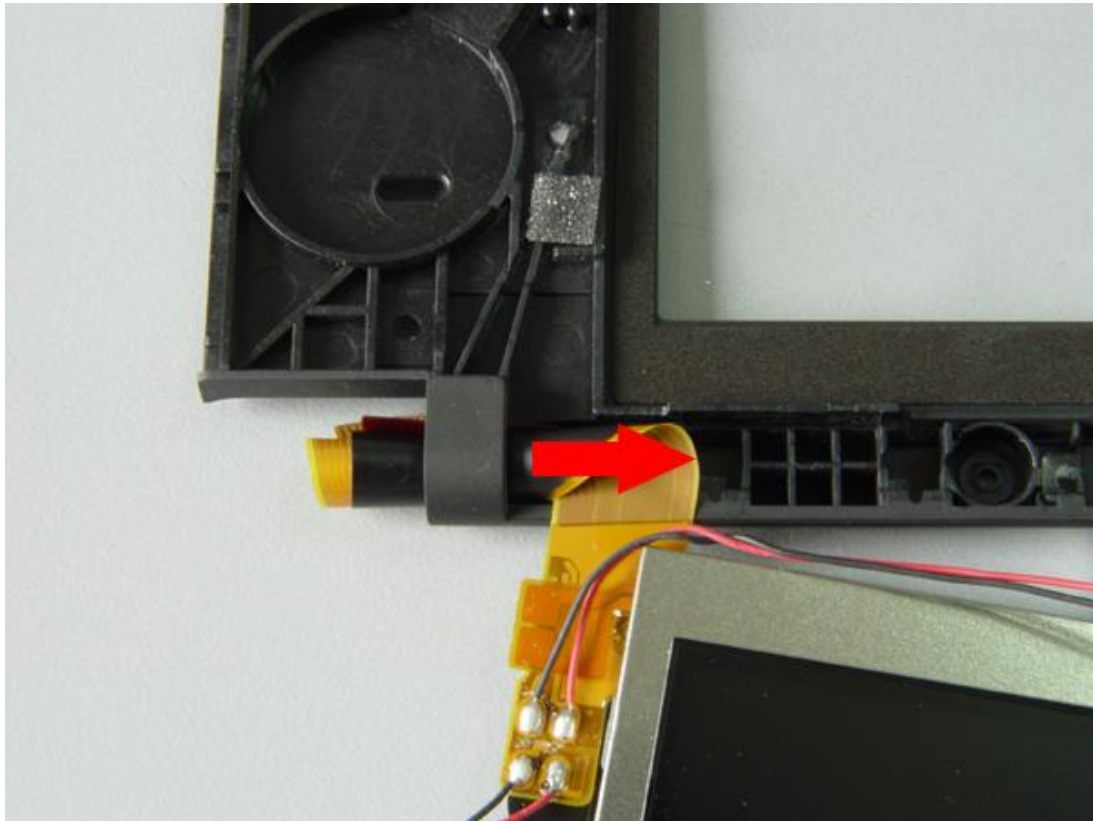
19. Roll the flat wire and move away the ring.



20. As shown on the picture, remove all the component.



21.roll up the flat cable and remove it from the shell.



22.two parts are separated

