

dconstruct  
jewelry





# A modern classic

**dconstruct** designs and manufactures unique, eco-friendly jewelry right here in Canada. Every piece is made of recycled resin.

Our work is inspired by nature and minimalist design. dconstruct's jewelry is handmade from leading architectural materials. Each piece contains a minimum of 40% pre-consumer recycled material. The recycled content would otherwise be waste from producers of sky lights, store fixtures and vending machine covers.





Made with Ecoresin, with 40% recycled content.  
Patterns may vary in density and direction.

Our organics and textiles are sourced from artisan communities in developing countries around the world. Through this process, we can help local tradespeople in struggling communities develop their skills, their businesses, and boost their local economies. The healthier the community, the more effectively they can fight poverty, poor living conditions, and illiteracy. It's about starting small, and building a future, brick by brick.



**Gathered** from lush forests, the fruits of the banana plant are first dried and softened. Then, traditional weavers spin their fiber by hand. These natural banana fibers are woven with Allo, also known as the Himalayan nettle and pressed between two clear panels of eco-resin in this stunning pattern.

# banana fibre



[ONE SIZE] BF-B



[S] BF-CN-S [M] BF-CN-M  
[L] BF-CN-L



[S] BF-CW-S [M] BF-CW-M  
[L] BF-CW-L



[LONG] BF-EL



[LONG HOOK] BF-ELH



[REGULAR] BF-ER



[SKINNY] BF-ES



[BIG HOOP] BF-EBH



[SMALL HOOP] BF-ESH



[16"] BF-NL-16 [18"] BF-NL-18  
[20"] BF-NL-20



[16"] BF-NR-16 [18"] BF-NR-18  
[20"] BF-NR-20



[16"] BF-NLS-16 [18"] BF-NLS-18  
[20"] BF-NLS-20

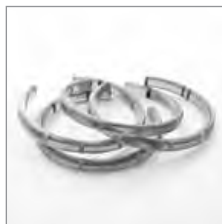


[5] BF-R-5 [6] BF-R-6 [7] BF-R-7  
[8] BF-R-8 [9] BF-R-9



# bear grass (black)

**Bear Grass** is a simple grass native to Western North America. It is known for its amazingly strong roots, which will sprout new grass even in the midst of scorched earth. The sage-colored stalks of this durable grass are pressed against a transparent black nylon for a subtle but stunning pattern.



[ONE SIZE] BGB-B



[S] BGB-CN-S [M] BGB-CN-M  
[L] BGB-CN-L



[S] BGB-CW-S [M] BGB-CW-M  
[L] BGB-CW-L



[LONG] BGB-EL



[LONG HOOK] BGB-ELH



[REGULAR] BGB-ER



[SKINNY] BGB-ES



[16"] BGB-NL-16 [18"] BGB-NL-18  
[20"] BGB-NL-20



[16"] BGB-NR-16 [18"] BGB-NR-18  
[20"] BGB-NR-20



[16"] BGB-NLS-16  
[18"] BGB-NLS-18  
[20"] BGB-NLS-20

Western North America is home to Bear Grass, a simple yet strong grass that grows to up to 150cm in height. The natural olive shade of this resilient grass is showcased perfectly in this pattern, pressed between clear pieces of eco-resin.

bear grass (light)



[ONE SIZE] BGL-B



[S] BGL-CN-S [M] BGL-CN-M  
[L] BGL-CN-L



[S] BGL-CW-S [M] BGL-CW-M  
[L] BGL-CW-L



[LONG] BGL-EL



[LONG HOOK] BGL-ELH



[REGULAR] BGL-ER



[SKINNY] BGL-ES



[BIG HOOP] BGL-EBH



[SMALL HOOP] BGL-ESH



[16"] BGL-NL-16 [18"] BGL-NL-18  
[20"] BGL-NL-20



[16"] BGL-NR-16 [18"] BGL-NR-18  
[20"] BGL-NR-20



[16"] BGL-NLS-16 [18"] BGL-NLS-18  
[20"] BGL-NLS-20



[5] BGL-R-5 [6] BGL-R-6  
[7] BGL-R-7 [8] BGL-R-8  
[9] BF-R-9



# blueberry rosewood

A crisp combination of materials and colors. Geometric rosewood patterns meet a rich blue silk.



[ONE SIZE] BR-B



[S] BR-CN-S [M] BR-CN-M  
[L] BR-CN-L



[S] BR-CW-S [M] BR-CW-M  
[L] BR-CW-L



[LONG] BR-EL



[LONG HOOK] BR-ELH



[REGULAR] BR-ER



[SKINNY] BR-ES



[BIG HOOP] BR-EBH



[SMALL HOOP] BR-ESH



[16"] BR-NL-16 [18"] BR-NL-18  
[20"] BR-NL-20



[16"] BR-NR-16 [18"] BR-NR-18  
[20"] BR-NR-20



[16"] BR-NLS-16 [18"] BR-NLS-18  
[20"] BR-NLS-20



[5] BR-R-5 [6] BR-R-6 [7] BR-R-7  
[8] BR-R-8 [9] BR-R-9

Evoked fragrant meadows and tranquil fields with sweet and simple pressed flowers in a natural arrangement.



[S] BBF-CN-S [M] BBF-CN-M  
[L] BBF-CN-L



[S] BBF-CW-S [M] BBF-CW-M  
[L] BBF-CW-L

bumble flower



# connection ink

Nepalese villagers earn supplemental income by tending to silkworms and their delicate cocoons. They then soften the cocoons in water and gently pull the silk into strips which are placed by hand to create this bold and unique fiber pattern.



[BANGLE - ONE SIZE] CI-B



[S] CI-CN-S [M] CI-CN-M  
[L] CI-CN-L



[S] CI-CW-S [M] CI-CW-M  
[L] CI-CW-L



[LONG] CI-EL



[LONG HOOK] CI-ELH



[REGULAR] CI-ER



[SKINNY] CI-ES



[16"] CI-NL-16 [18"] CI-NL-18  
[20"] CI-NL-20



[16"] CI-NR-16 [18"] CI-NR-18  
[20"] CI-NR-20



[16"] CI-NLS-16 [18"] CI-NLS-18  
[20"] CI-NLS-20

Graphic white letters, based on the Courier font, evoke memories of the typewriters of days passed. Perfect for writers, advertisers, and anyone who loves the written word. Contains random print/font related words.

courier (black)



[ONE SIZE] CB-B



[S] CB-CN-S [M] CB-CN-M  
[L] CB-CN-L



[S] CB-CW-S [M] CB-CW-M  
[L] CB-CW-L



[LONG] CB-EL



[LONG HOOK] CB-ELH



[REGULAR] CB-ER



[SKINNY] CB-ES



[BIG HOOP] CB-EBH



[SMALL HOOP] CB-ESH



[16"] CB-NL-16 [18"] CB-NL-18  
[20"] CB-NL-20



[16"] CB-NR-16 [18"] CB-NR-18  
[20"] CB-NR-20



[16"] CB-NLS-16 [18"] CB-NLS-18  
[20"] CB-NLS-20



[5] CB-R-5 [6] CB-R-6 [7] CB-R-7  
[8] CB-R-8 [9] CB-R-9

# current fireworks

Organic ruby-colored yarn fiber sparks like summer fireworks against simple black film.



[ONE SIZE] CF-B



[S] CF-CN-S [M] CF-CN-M  
[L] CF-CN-L



[S] CF-CW-S [M] CF-CW-M  
[L] CF-CW-L



[LONG] CF-EL



[LONG HOOK] CF-ELH



[REGULAR] CF-ER



[SKINNY] CF-ES



[16"] CF-NL-16 [18"] CF-NL-18  
[20"] CF-NL-20



[16"] CF-NR-16 [18"] CF-NR-18  
[20"] CF-NR-20



[16"] CF-NLS-16 [18"] CF-NLS-18  
[20"] CF-NLS-20

Artisans apply a heat finish to locally pressed metal and then seal it with native beeswax, to produce a unique patina. The metal is then handcut into specified strands. Any discarded fragments are sold to local sculptors to be melted down and formed into Buddhist statues.

# electra silver



[ONE SIZE] ES-B



[S] ES-CN-S [M] ES-CN-M  
[L] ES-CN-L



[S] ES-CW-S [M] ES-CW-M  
[L] ES-CW-L



[LONG] ES-EL



[LONG HOOK] ES-ELH



[REGULAR] ES-ER



[SKINNY] ES-ES



[BIG HOOP] ES-EBH



[SMALL HOOP] ES-ESH



[16"] ES-NL-16 [18"] ES-NL-18  
[20"] ES-NL-20



[16"] ES-NR-16 [18"] ES-NR-18  
[20"] ES-NR-20



[16"] ES-NLS-16 [18"] ES-NLS-18  
[20"] ES-NLS-20



[5] ES-R-5 [6] ES-R-6 [7] ES-R-7  
[8] ES-R-8 [9] ES-R-9



# electra white

New for  
Spring 2014

Artisans apply a heat finish to locally pressed metal and then seal it with native beeswax, to produce a unique patina. The metal is then handcut into specified strands. Any discarded fragments are sold to local sculptors to be melted down and formed into Buddhist statues.



[ONE SIZE] EW-B



[S] EW-CN-S [M] EW-CN-M  
[L] EW-CN-L



[S] EW-CW-S [M] EW-CW-M  
[L] EW-CW-L



[LONG] EW-EL



[LONG HOOK] EW-ELH



[REGULAR] EW-ER



[SKINNY] EW-ES



[BIG HOOP] EW-EBH



[SMALL HOOP] EW-ESH



[16"] EW-NL-16 [18"] EW-NL-18  
[20"] EW-NL-20



[16"] EW-NR-16 [18"] EW-NR-18  
[20"] EW-NR-20



[16"] EW-NLS-16 [18"] EW-NLS-18  
[20"] EW-NLS-20



[5] EW-R-5 [6] EW-R-6 [7] EW-R-7  
[8] EW-R-8 [9] EW-R-9

Pantone, the authority on all things color, have declared emerald their color of the year. We've combined this energetic shade with a luxurious gold shimmer interior for a look that's purely fabulous.

emerald gold



[BANGLE - ONE SIZE] EG-B



[S] EG-CN-S [M] EG-CN-M  
[L] EG-CN-L



[S] EG-CW-S [M] EG-CW-M  
[L] EG-CW-L



[LONG] EG-EL



[LONG HOOK] EG-ELH



[REGULAR] EG-ER



[SKINNY] EG-ES



[BIG HOOP] EG-EBH



[SMALL HOOP] EG-ESH



[16"] EG-NL-16 [18"] EG-NL-18  
[20"] EG-NL-20



[16"] EG-NR-16 [18"] EG-NR-18  
[20"] EG-NR-20



[16"] EG-NLS-16 [18"] EG-NLS-18  
[20"] EG-NLS-20



[5] EG-R-5 [6] EG-R-6 [7] EG-R-7  
[8] EG-R-8 [9] EG-R-9

# floral elements

A bold and beautiful mix of organic elements. Gingko meets red posy and red flame on stunning monsoon background.



[ONE SIZE] FE-B



[S] FE-CN-S [M] FE-CN-M  
[L] FE-CN-L



[S] FE-CW-S [M] FE-CW-M  
[L] FE-CW-L



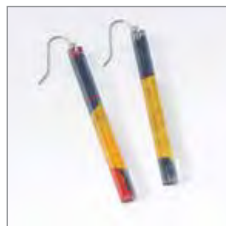
[LONG] FE-EL



[LONG HOOK] FE-ELH



[REGULAR] FE-ER



[SKINNY] FE-ES



[BIG HOOP] FE-EBH



[SMALL HOOP] FE-ESH



[16"] FE-NL-16 [18"] FE-NL-18  
[20"] FE-NL-20



[16"] FE-NR-16 [18"] FE-NR-18  
[20"] FE-NR-20



[16"] FE-NLS-16 [18"] FE-NLS-18  
[20"] FE-NLS-20



[5] FE-R-5 [6] FE-R-6 [7] FE-R-7  
[8] FE-R-8 [9] FE-R-9

The process of harvesting and gently processing “prayer leaves” results in the otherworldly beauty of “fossil” leaves. The delicate structures of leaf veins are then tinted with natural dyes. The resulting material is pressed between two panels of clear eco-resin to create a stunning design.

fossil leaf (black)



[ONE SIZE] FLB-B



[S] FLB-CN-S [M] FLB-CN-M  
[L] FLB-CN-L



[S] FLB-CW-S [M] FLB-CW-M  
[L] FLB-CW-L



[LONG] FLB-EL



[LONG HOOK] FLB-ELH



[REGULAR] FLB-ER



[SKINNY] FLB-ES



[BIG HOOP] FLB-EBH



[SMALL HOOP] FLB-ESH



[16"] FLB-NL-16 [18"] FLB-NL-18  
[20"] FLB-NL-20



[16"] FLB-NR-16 [18"] FLB-NR-18  
[20"] FLB-NR-20



[16"] FLB-NLS-16 [18"] FLB-NLS-18  
[20"] FLB-NLS-20



[5] FLB-R-5 [6] FLB-R-6  
[7] FLB-R-7 [8] FLB-R-8  
[9] FLB-R-9

# fossil leaf (indigo)

Chinese farmers gather what are known as “prayer leaves”. The spade-shaped leaves are then delicately washed and processed, leaving behind only the “fossil” of the original leaf. The end result is a hauntingly beautiful pattern set against deep indigo film.



[ONE SIZE] FLI-B



[S] FLI-CN-S [M] FLI-CN-M  
[L] FLI-CN-L



[S] FLI-CW-S [M] FLI-CW-M  
[L] FLI-CW-L



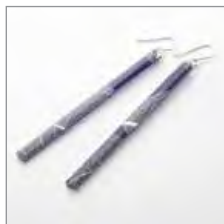
[LONG] FLI-EL



[LONG HOOK] FLI-ELH



[REGULAR] FLI-ER



[SKINNY] FLI-ES



[BIG HOOP] FLI-EBH



[SMALL HOOP] FLI-ESH



[16"] FLI-NL-16 [18"] FLI-NL-18  
[20"] FLI-NL-20



[16"] FLI-NR-16 [18"] FLI-NR-18  
[20"] FLI-NR-20



[16"] FLI-NLS-16 [18"] FLI-NLS-18  
[20"] FLI-NLS-20



[5] FLI-R-5 [6] FLI-R-6  
[7] FLI-R-7 [8] FLI-R-8  
[9] FLI-R-9

Prayer leaves, gathered by Chinese farmers, are gently washed and processed to create a delicate “fossil” leaf. The tissue-fine material is then set against bright, tangerine graphic film to highlight the fine details of the leaf.

fossil leaf (tangerine)



[ONE SIZE] FLT-B



[S] FLT-CN-S [M] FLT-CN-M  
[L] FLT-CN-L



[S] FLT-CW-S [M] FLT-CW-M  
[L] FLT-CW-L



[LONG] FLT-EL



[LONG HOOK] FLT-ELH



[REGULAR] FLT-ER



[SKINNY] FLT-ES



[BIG HOOP] FLT-EBH



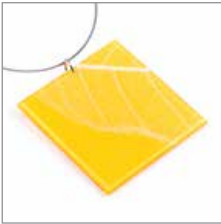
[SMALL HOOP] FLT-ESH



[16"] FLT-NL-16 [18"] FLT-NL-18  
[20"] FLT-NL-20



[16"] FLT-NR-16 [18"] FLT-NR-18  
[20"] FLT-NR-20



[16"] FLT-NLS-16 [18"] FLT-NLS-18  
[20"] FLT-NLS-20



[5] FLT-R-5 [6] FLT-R-6  
[7] FLT-R-7 [8] FLT-R-8  
[9] FLT-R-9



Craftspeople of Solukhumbu, a mountainous area of Kathmandu, have been making paper from the bark of the indigenous, rapidly renewable lokta shrubs for centuries.

fray smoke

New for  
Spring 2014



[ONE SIZE] FS-B



[S] FS-CN-S [M] FS-CN-M  
[L] FS-CN-L



[S] FS-CW-S [M] FS-CW-M  
[L] FS-CW-L



[LONG] FS-EL



[LONG HOOK] FS-ELH



[REGULAR] FS-ER



[SKINNY] FS-ES



[BIG HOOP] FS-EBH



[SMALL HOOP] FS-ESH



[16"] FS-NL-16 [18"] FS-NL-18  
[20"] FS-NL-20



[16"] FS-NR-16 [18"] FS-NR-18  
[20"] FS-NR-20



[16"] FS-NLS-16 [18"] FS-NLS-18  
[20"] FS-NLS-20



[5] FS-R-5 [6] FS-R-6 [7] FS-R-7  
[8] FS-R-8 [9] FS-R-9

This textile-based, mossy pattern calls to mind hushed forests, gentle rolling hills of a valley, and swaying prairie grasses.

# hush lichen



[ONE SIZE] HL-B



[S] HL-CN-S [M] HL-CN-M  
[L] HL-CN-L



[S] HL-CW-S [M] HL-CW-M  
[L] HL-CW-L



[LONG] HL-EL



[LONG HOOK] HL-ELH



[REGULAR] HL-ER



[SKINNY] HL-ES



[BIG HOOP] HL-EBH



[SMALL HOOP] HL-ESH



[16"] HL-NL-16 [18"] HL-NL-18  
[20"] HL-NL-20



[16"] HL-NR-16 [18"] HL-NR-18  
[20"] HL-NR-20



[16"] HL-NLS-16 [18"] HL-NLS-18  
[20"] HL-NLS-20



[5] HL-R-5 [6] HL-R-6 [7] HL-R-7  
[8] HL-R-8 [9] HL-R-9

Sisal, a type of Agave plant, was used for generations by the Muisca Tribe to make woven sacks for coffee beans. Now, the resourceful women of Colombia use the native weave of Chia to create a sustainable organic material to help stimulate economic growth in their country.



[ONE SIZE] LC-B



[S] LC-CN-S [M] LC-CN-M  
[L] LC-CN-L



[S] LC-CW-S [M] LC-CW-M  
[L] LC-CW-L



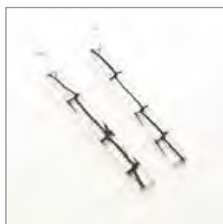
[LONG] LC-EL



[LONG HOOK] LC-ELH



[REGULAR] LC-ER



[SKINNY] LC-ES



[BIG HOOP] LC-EBH



[SMALL HOOP] LC-ESH



[16"] LC-NL-16 [18"] LC-NL-18  
[20"] LC-NL-20



[16"] LC-NR-16 [18"] LC-NR-18  
[20"] LC-NR-20



[16"] LC-NLS-16 [18"] LC-NLS-18  
[20"] LC-NLS-20



[5] LC-R-5 [6] LC-R-6 [7] LC-R-7  
[8] LC-R-8 [9] LC-R-9

Colombian women use the Sisal plant and the ancient weave of the Muisca Tribe to help stimulate economic growth in their country. The organic weave pops against a brilliant copper finish, resulting in a shining rustic pattern.

lasso coal (copper)



[ONE SIZE] LCC-B



[S] LCC-CN-S [M] LCC-CN-M  
[L] LCC-CN-L



[S] LCC-CW-S [M] LCC-CW-M  
[L] LCC-CW-L



[LONG] LCC-EL



[LONG HOOK] LCC-ELH



[REGULAR] LCC-ER



[SKINNY] LCC-ES



[BIG HOOP] LCC-EBH



[SMALL HOOP] LCC-ESH



[16"] LCC-NL-16 [18"] LCC-NL-18  
[20"] LCC-NL-20



[16"] LCC-NR-16 [18"] LCC-NR-18  
[20"] LCC-NR-20



[16"] LCC-NLS-16 [18"] LCC-NLS-18  
[20"] LCC-NLS-20

# lasso natural (black)

**Resourceful** Colombians have found a new use of the ancient Sisal weave of the Muisca Tribe to create this beautiful pattern. The organic open weave is set against a transparent black fabric background which allows light to pour through.



[ONE SIZE] LN-B



[S] LN-CN-S [M] LN-CN-M  
[L] LN-CN-L



[S] LN-CW-S [M] LN-CW-M  
[L] LN-CW-L



[LONG] LN-EL



[LONG HOOK] LN-ELH



[REGULAR] LN-ER



[SKINNY] LN-ES



[BIG HOOP] LN-EBH



[SMALL HOOP] LN-ESH



[16"] LN-NL-16 [18"] LN-NL-18  
[20"] LN-NL-20



[16"] LN-NR-16 [18"] LN-NR-18  
[20"] LN-NR-20



[16"] LN-NLS-16 [18"] LN-NLS-18  
[20"] LN-NLS-20



[5] LN-R-5 [6] LN-R-6 [7] LN-R-7  
[8] LN-R-8 [9] LN-R-9

The delicate blue-green leaves of the Adiantum fern are imprinted between two clear panels of eco-resin to create a natural, stylish pattern.

maidenhair



[ONE SIZE] MH-B



[S] MH-CN-S [M] MH-CN-M  
[L] MH-CN-L



[S] MH-CW-S [M] MH-CW-M  
[L] MH-CW-L



[LONG] MH-EL



[LONG HOOK] MH-ELH



[REGULAR] MH-ER



[SKINNY] MH-ES



[BIG HOOP] MH-EBH



[SMALL HOOP] MH-ESH



[16"] MH-NL-16 [18"] MH-NL-18  
[20"] MH-NL-20



[16"] MH-NR-16 [18"] MH-NR-18  
[20"] MH-NR-20



[16"] MH-NLS-16 [18"] MH-NLS-18  
[20"] MH-NLS-20



[5] MH-R-5 [6] MH-R-6  
[7] MH-R-7 [8] MH-R-8  
[9] MH-R-9



# migration connection

African weavers from Northern Swaziland use traditional hand looms to create this delicate weave which is then dyed an intense shade of scarlet. Combined with large strips of red silk to create a dynamic pattern.



[ONE SIZE] MC-B



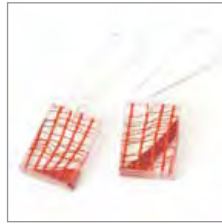
[S] MC-CN-S [M] MC-CN-M  
[L] MC-CN-L



[S] MC-CW-S [M] MC-CW-M  
[L] MC-CW-L



[LONG] MC-EL



[LONG HOOK] MC-ELH



[REGULAR] MC-ER



[SKINNY] MC-ES



[16"] MC-NL-16 [18"] MC-NL-18  
[20"] MC-NL-20



[16"] MC-NR-16 [18"] MC-NR-18  
[20"] MC-NR-20



[16"] MC-NLS-16 [18"] MC-NLS-18  
[20"] MC-NLS-20

A festive array of sunset-colored ribbons makes this pattern fresh and feminine. A fanciful new addition to our line.

mirage claret



[ONE SIZE] MIC-B



[S] MIC-CN-S [M] MIC-CN-M  
[L] MIC-CN-L



[S] MIC-CW-S [M] MIC-CW-M  
[L] MIC-CW-L



[LONG] MIC-EL



[LONG HOOK] MIC-ELH



[REGULAR] MIC-ER



[SKINNY] MIC-ES



[16"] MIC-NL-16 [18"] MIC-NL-18  
[20"] MIC-NL-20



[16"] MIC-NR-16 [18"] MIC-NR-18  
[20"] MIC-NR-20



[16"] MIC-NLS-16 [18"] MIC-NLS-18  
[20"] MIC-NLS-20

# mirage twilight

Indigo, electric blue, and grape-colored ribbons combine in a fusion of color and style.



[ONE SIZE] MIT-B



[S] MIT-CN-S [M] MIT-CN-M  
[L] MIT-CN-L



[S] MIT-CW-S [M] MIT-CW-M  
[L] MIT-CW-L



[LONG] MIT-EL



[LONG HOOK] MIT-ELH



[REGULAR] MIT-ER



[SKINNY] MIT-ES



[16"] MIT-NL-16 [18"] MIT-NL-18  
[20"] MIT-NL-20



[16"] MIT-NR-16 [18"] MIT-NR-18  
[20"] MIT-NR-20



[16"] MIT-NLS-16 [18"] MIT-NLS-18  
[20"] MIT-NLS-20



[5] MIT-R-5 [6] MIT-R-6 [7] MIT-R-7  
[8] MIT-R-8 [9] MIT-R-9

Woven textile and metallic gold shimmer and gleam in this fabulously decadent collection.

pure gold



[ONE SIZE] PG-B



[S] PG-CN-S [M] PG-CN-M  
[L] PG-CN-L



[S] PG-CW-S [M] PG-CW-M  
[L] PG-CW-L



[LONG] PG-EL



[LONG HOOK] PG-ELH



[REGULAR] PG-ER



[SKINNY] PG-ES



[16"] PG-NL-16 [18"] PG-NL-18  
[20"] PG-NL-20



[16"] PG-NR-16 [18"] PG-NR-18  
[20"] PG-NR-20



[16"] PG-NLS-16 [18"] PG-NLS-18  
[20"] PG-NLS-20



[5] PG-R-5 [6] PG-R-6 [7] PG-R-7  
[8] PG-R-8 [9] PG-R-9

# regency gold

Gold metallic sequins reflect and glisten with every movement.  
An elegant show-stopper of a pattern.



[ONE SIZE] RG-B



[S] RG-CN-S [M] RG-CN-M  
[L] RG-CN-L



[S] RG-CW-S [M] RG-CW-M  
[L] RG-CW-L



[LONG] RG-EL



[LONG HOOK] RG-ELH



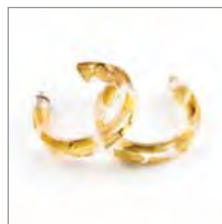
[REGULAR] RG-ER



[SKINNY] RG-ES



[BIG HOOP] RG-EBH



[SMALL HOOP] RG-ESH



[16"] RG-NL-16 [18"] RG-NL-18  
[20"] RG-NL-20



[16"] RG-NR-16 [18"] RG-NR-18  
[20"] RG-NR-20



[16"] RG-NLS-16 [18"] RG-NLS-18  
[20"] RG-NLS-20



[5] RG-R-5 [6] RG-R-6  
[7] RG-R-7 [8] RG-R-8  
[9] RG-R-9

Lustrous silver sequins shimmer and shine in this regency variation.

regency silver



[ONE SIZE] RS-B



[S] RS-CN-S [M] RS-CN-M  
[L] RS-CN-L



[S] RS-CW-S [M] RS-CW-M  
[L] RS-CW-L



[LONG] RS-EL



[LONG HOOK] RS-ELH



[REGULAR] RS-ER



[SKINNY] RS-ES



[BIG HOOP] RS-EBH



[SMALL HOOP] RS-ESH



[16"] RS-NL-16 [18"] RS-NL-18  
[20"] RS-NL-20



[16"] RS-NR-16 [18"] RS-NR-18  
[20"] RS-NR-20



[16"] RS-NLS-16 [18"] RS-NLS-18  
[20"] RS-NLS-20



[5] RS-R-5 [6] RS-R-6  
[7] RS-R-7 [8] RS-R-8  
[9] RS-R-9



# rice grass mesa

Pressed rice grass, native to western North America - combined with a mesa background.



[ONE SIZE] RGM-B



[S] RGM-CN-S [M] RGM-CN-M  
[L] RGM-CN-L



[S] RGM-CW-S [M] RGM-CW-M  
[L] RGM-CW-L



[LONG] RGM-EL



[LONG HOOK] RGM-ELH



[REGULAR] RGM-ER



[SKINNY] RGM-ES



[BIG HOOP] RGM-EBH



[SMALL HOOP] RGM-ESH



[16"] RGM-NL-16 [18"] RGM-NL-18  
[20"] RGM-NL-20



[16"] RGM-NR-16 [18"] RGM-NR-18  
[20"] RGM-NR-20



[16"] RGM-NLS-16 [18"] RGM-NLS-18  
[20"] RGM-NLS-20



[5] RGM-R-5 [6] RGM-R-6  
[7] RGM-R-7 [8] RGM-R-8  
[9] RGM-R-9

Seaweed takes on a whole new look in this playful organic design. The ideal pattern for anyone with a love of nature and a sense of adventure.

seaweed



[ONE SIZE] SW-B



[S] SW-CN-S [M] SW-CN-M  
[L] SW-CN-L



[S] SW-CW-S [M] SW-CW-M  
[L] SW-CW-L



[LONG] SW-EL



[LONG HOOK] SW-ELH



[REGULAR] SW-ER



[SKINNY] SW-ES



[BIG HOOP] SW-EBH



[SMALL HOOP] SW-ESH



[16"] SW-NL-16 [18"] SW-NL-18  
[20"] SW-NL-20



[16"] SW-NR-16 [18"] SW-NR-18  
[20"] SW-NR-20



[16"] SW-NLS-16 [18"] SW-NLS-18  
[20"] SW-NLS-20



[5] SW-R-5 [6] SW-R-6  
[7] SW-R-7 [8] SW-R-8  
[9] SW-R-9

# seaweed black

The addition of a black veil makes this variation decidedly more dramatic and intense.



[ONE SIZE] SWB-B



[S] SWB-CN-S [M] SWB-CN-M  
[L] SWB-CN-L



[S] SWB-CW-S [M] SWB-CW-M  
[L] SWB-CW-L



[LONG] SWB-EL



[LONG HOOK] SWB-ELH



[REGULAR] SWB-ER



[SKINNY] SWB-ES



[BIG HOOP] SWB-EBH



[SMALL HOOP] SWB-ESH



[16"] SWB-NL-16 [18"] SWB-NL-18  
[20"] SWB-NL-20



[16"] SWB-NR-16 [18"] SWB-NR-18  
[20"] SWB-NR-20



[16"] SWB-NLS-16 [18"] SWB-NLS-18  
[20"] SWB-NLS-20



[5] SWB-R-5 [6] SWB-R-6  
[7] SWB-R-7 [8] SWB-R-8  
[9] SWB-R-9

**Natural** Sonoma plant material looks polished against graphic grey film backing. This is a unique piece of organic modernist design.

sonoma (gray)



[ONE SIZE] SG-B



[S] SG-CN-S [M] SG-CN-M  
[L] SG-CN-L



[S] SG-CW-S [M] SG-CW-M  
[L] SG-CW-L



[LONG] SG-EL



[LONG HOOK] SG-ELH



[REGULAR] SG-ER



[SKINNY] SG-ES



[16"] SG-NL-16 [18"] SG-NL-18  
[20"] SG-NL-20



[16"] SG-NR-16 [18"] SG-NR-18  
[20"] SG-NR-20



[16"] SG-NLS-16 [18"] SG-NLS-18  
[20"] SG-NLS-20

# starcrossed titanium

Designed to give the impression of stars in the sky, all joined-up by a series of intersecting straight lines.



[BANGLE - ONE SIZE] ST-B



[S] ST-CN-S [M] ST-CN-M  
[L] ST-CN-L



[S] ST-CW-S [M] ST-CW-M  
[L] ST-CW-L



[LONG] ST-EL



[LONG HOOK] ST-ELH



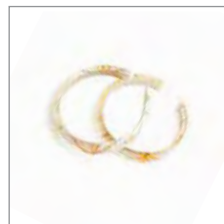
[REGULAR] ST-ER



[SKINNY] ST-ES



[BIG HOOP] ST-EBH



[SMALL HOOP] ST-ESH



[16"] ST-NL-16 [18"] ST-NL-18  
[20"] ST-NL-20



[16"] ST-NR-16 [18"] ST-NR-18  
[20"] ST-NR-20



[16"] ST-NLS-16 [18"] ST-NLS-18  
[20"] ST-NLS-20



[5] ST-R-5 [6] ST-R-6  
[7] ST-R-7 [8] ST-R-8  
[9] ST-R-9

Gauzy metallic textile layers create a rustic-meets-classic vibe.

swept copper



[ONE SIZE] SC-B



[S] SC-CN-S [M] SC-CN-M  
[L] SC-CN-L



[S] SC-CW-S [M] SC-CW-M  
[L] SC-CW-L



[LONG] SC-EL



[LONG HOOK] SC-ELH



[REGULAR] SC-ER



[SKINNY] SC-ES



[BIG HOOP] SC-EBH



[SMALL HOOP] SC-ESH



[16"] SC-NL-16 [18"] SC-NL-18  
[20"] SC-NL-20



[16"] SC-NR-16 [18"] SC-NR-18  
[20"] SC-NR-20



[16"] SC-NLS-16 [18"] SC-NLS-18  
[20"] SC-NLS-20



[5] SC-R-5 [6] SC-R-6 [7] SC-R-7  
[8] SC-R-8 [9] SC-R-9

# swept silver

Silver layers of textile glimmer and gleam in this chic pattern. A perfectly modern approach to an evening out.



[ONE SIZE] SS-B



[S] SS-CN-S [M] SS-CN-M  
[L] SS-CN-L



[S] SS-CW-S [M] SS-CW-M  
[L] SS-CW-L



[LONG] SS-EL



[LONG HOOK] SS-ELH



[REGULAR] SS-ER



[SKINNY] SS-ES



[BIG HOOP] SS-EBH



[SMALL HOOP] SS-ESH



[16"] SS-NL-16 [18"] SS-NL-18  
[20"] SS-NL-20



[16"] SS-NR-16 [18"] SS-NR-18  
[20"] SS-NR-20



[16"] SS-NLS-16 [18"] SS-NLS-18  
[20"] SS-NLS-20



[5] SS-R-5 [6] SS-R-6 [7] SS-R-7  
[8] SS-R-8 [9] SS-R-9



Metallic blue foil strips rest coolly against a grey mesh background.

tempo ice



[ONE SIZE] TI-B



[S] TI-CN-S [M] TI-CN-M  
[L] TI-CN-L



[S] TI-CW-S [M] TI-CW-M  
[L] TI-CW-L



[LONG] TI-EL



[LONG HOOK] TI-ELH



[REGULAR] TI-ER



[SKINNY] TI-ES



[BIG HOOP] TI-EBH



[SMALL HOOP] TI-ESH



[16"] TI-NL-16 [18"] TI-NL-18  
[20"] TI-NL-20



[16"] TI-NR-16 [18"] TI-NR-18  
[20"] TI-NR-20



[16"] TI-NLS-16 [18"] TI-NLS-18  
[20"] TI-NLS-20



[5] TI-R-5 [6] TI-R-6 [7] TI-R-7  
[8] TI-R-8 [9] TI-R-9

A twist on Ting Ting includes rusted ting ting, apricot ting ting, and red flame floral elements

ting ting elements

New for  
Spring 2014



[ONE SIZE] TTE-B



[S] TTE-CN-S [M] TTE-CN-M  
[L] TTE-CN-L



[S] TTE-CW-S [M] TTE-CW-M  
[L] TTE-CW-L



[LONG] TTE-EL



[LONG HOOK] TTE-ELH



[REGULAR] TTE-ER



[SKINNY] TTE-ES



[BIG HOOP] TTE-EBH



[SMALL HOOP] TTE-ESH



[16"] TTE-NL-16 [18"] TTE-NL-18  
[20"] TTE-NL-20



[16"] TTE-NR-16 [18"] TTE-NR-18  
[20"] TTE-NR-20



[16"] TTE-NLS-16 [18"] TTE-NLS-18  
[20"] TTE-NLS-20

# wisp gold

Fine strips of golden wire shine against a moody charcoal background.



[ONE SIZE] WG-B



[S] WG-CN-S [M] WG-CN-M  
[L] WG-CN-L



[S] WG-CW-S [M] WG-CW-M  
[L] WG-CW-L



[LONG] WG-EL



[LONG HOOK] WG-ELH



[REGULAR] WG-ER



[SKINNY] WG-ES



[BIG HOOP] WG-EBH



[SMALL HOOP] WG-ESH



[16"] WG-NL-16 [18"] WG-NL-18  
[20"] WG-NL-20



[16"] WG-NR-16 [18"] WG-NR-18  
[20"] WG-NR-20



[16"] WG-NLS-16 [18"] WG-NLS-18  
[20"] WG-NLS-20



[5] WG-R-5 [6] WG-R-6  
[7] WG-R-7 [8] WG-R-8  
[9] WG-R-9

Partnering with Conservation through Poverty Alleviation, we help rural farmers earn an income through wild silk production. Producing silk cocoons and sewing silk textiles are some of the projects in which farmers and their families are engaged.



[ONE SIZE] WS-B



[S] WS-CN-S [M] WS-CN-M  
[L] WS-CN-L



[S] WS-CW-S [M] WS-CW-M  
[L] WS-CW-L



[LONG] WS-EL



[LONG HOOK] WS-ELH



[REGULAR] WS-ER



[SKINNY] WS-ES



[BIG HOOP] WS-EBH



[SMALL HOOP] WS-ESH



[16"] WS-NL-16 [18"] WS-NL-18  
[20"] WS-NL-20



[16"] WS-NR-16 [18"] WS-NR-18  
[20"] WS-NR-20



[16"] WS-NLS-16 [18"] WS-NLS-18  
[20"] WS-NLS-20

wild silk

New for  
Spring 2014

# bangles and hoops

Easy to wear and warm weather ready, these bangles and hoops inject a burst of color into any outfit and pair beautifully with the entire line of dconstruct jewelry.



[BANGLE] SEA S-B  
[BIG HOOP] SEA S-EBH  
[SMALL HOOP] SEA S-ESH



[BANGLE] COBALT CT-B  
[BIG HOOP] COBALT CT-EBH  
[SMALL HOOP] COBALT CT-ESH



[BANGLE] VITAMIN C VC-B  
[BIG HOOP] VITAMIN C VC-EBH  
[SMALL HOOP] VITAMIN C VC-ESH



[BANGLE] BEWITCHED BW-B  
[BIG HOOP] BEWITCHED BW-EBH  
[SMALL HOOP] BEWITCHED BW-ESH



[BANGLE] CORAL CO-B  
[BIG HOOP] CORAL CO-EBH  
[SMALL HOOP] CORAL CO-ESH



[BANGLE] CRANBERRY CR-B  
[BIG HOOP] CRANBERRY CR-EBH  
[SMALL HOOP] CRANBERRY CR-ESH

The bold lines of the chevron shape are the perfect way to showcase complementary colors and textures for an entirely new feel with double the impact.

# chevron



[16"/18"/20"/30"] HUSH LICHEN/  
BANANA FIBRE HL-BF-NCH



[16"/18"/20"/30"] SWEPT SILVER/  
FOSSIL LEAF INDIGO SS-FLI-NCH



[16"/18"/20"/30"] PURE GOLD/  
WISP GOLD PG-WG-NCH



[16"/18"/20"/30"] PURE GOLD/  
FLORAL ELEMENTS PG-FE-NCH



[16"/18"/20"/30"] PURE GOLD/  
BLUEBERRY ROSEWOOD PG-BR-NCH



[16"/18"/20"/30"] COURIER BLACK/  
COBALT BLUE CT-CB-NCH

# chevron and cluster necklaces

New for  
Spring 2014



[16"/18"/20"/30"] PURE GOLD/  
ELECTRA WHITE PG-EW-NCH



[16"/18"/20"/30"] PURE GOLD/  
WILD SILK PG-WS-NCH



[16"/18"/20"/30"] SWEPT COPPER/  
FOSSIL TANGERINE/PURE GOLD  
SC-FLT-PG-NCL



[16"/18"/20"/30"] PURE GOLD/  
REGENCY GOLD /WISP GOLD  
PG-RG-WG-NCL



[16"/18"/20"/30"] SEAWEED/LASSO  
NATURAL/BANANA FIBRE  
SW-LN-BF-NCL



[16"/18"/20"/30"] COURIER BLACK/  
ELECTRA SILVER/SWEPT SILVER  
CB-ES-SS-NCL



[16"/18"/20"/30"] FLORAL ELEMENTS/  
PURE GOLD/CRANBERRY  
FE-PG-CR-NCL



[16"/18"/20"/30"] BLUEBERRY ROSEWOOD/  
PURE GOLD/COBALT BLUE  
BR-PG-CT-NCL

Minimal and classic, these studs inject a burst of color into any outfit and pair beautifully with the entire line of dconstruct jewelry.



BANANA FIBRE BF-ESC



BANANA FIBRE BF-EST



BEWITCHED BW-ESC



BEWITCHED BW-EST



COURIER (BLACK) CB-ESC



COURIER (BLACK) CB-EST



CORAL CO-ESC



CORAL CO-EST



CORAL CR-ESC



CORAL CR-EST



COBALT BLUE CT-ESC



COBALT BLUE CT-EST

studs

New for  
Spring 2014



# studs



FOSSIL LEAF (INDIGO) FLI-ESC



FOSSIL LEAF (INDIGO) FLI-EST



HUSH LINEN HL-ESC



HUSH LINEN HL-EST



MIGRATION CONNECTION  
MC-ESC



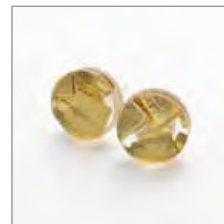
MIGRATION CONNECTION  
MC-EST



PURE GOLD PG-ESC



PURE GOLD PG-EST



REAL GOLD RG-ESC



REAL GOLD RG-EST

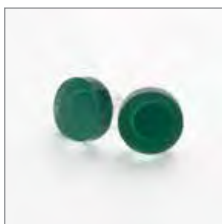


REGENCY SILVER RS-ESC



REGENCY SILVER RS-EST

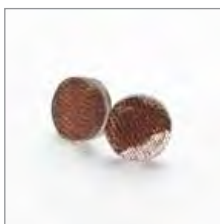
# studs



SEA S-ESC



SEA S-EST



SWEPT COPPER SC-ESC



SWEPT COPPER SC-EST



SONOMA (GRAY) SG-ESC



SONOMA (GRAY) SG-EST



SWEPT SILVER SS-ESC



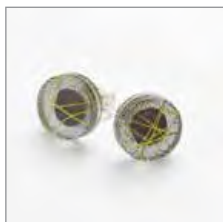
SWEPT SILVER SS-EST



VITAMIN C VC-ESC



VITAMIN C VC-EST



WISP GOLD WG-ESC



WISP GOLD WG-EST

Honeycomb patterns featuring rich golden hues, reflect a sophisticated yet modern style.

# honeycomb

New for  
Spring 2014



PURE GOLD PG-CHCW



PURE GOLD PG-CHCN



PURE GOLD PG-NHC



PURE GOLD PG-EHCL



PURE GOLD PG-EHCS



WISP GOLD WG-CHCW



WISP GOLD WG-CHCN




WISP GOLD WG-NHC



WISP GOLD WG-EHCL



WISP GOLD WG-EHCS



For wholesale inquiries:  
wholesale@dconstruct.ca  
1-888-817-2946

Visit us on online:  
@dconstructjewel  
www.dconstruct.ca

This catalog is printed  
on recycled paper using  
vegetable based ink.

Design: Chris Pointon @pop77  
Copywriting: Albertine Watson @littlebluerobot  
Product photos: Colin Vandenberg / Nik Thavisone  
Model photography: Nik Thavisone  
Model: Heidi Dyck  
Fashion direction: Julie Pederson  
Hair: Lizanne Laurin