

# TT5-2X2S

3-, 4- & 5-Lamp T5HO  
Twin Tube Surface Mount



**HiMax** Energy Saving High-Performance  
Fluorescent Lighting Systems

## FEATURES & BENEFITS

- **Push Button Access** - Industry Leading Maintenance Advantage giving access to all internal components in seconds without the use of tools and removal of lamps!
- **Over 50% Energy Savings Compared to HID** and old fluorescent systems
- **Longer Lamp Life For T5HO!** 25,000hrs @ 3hrs/start and 35,000hrs @ 12hrs/start
- **95% Lumen Maintenance For T5HO** compared to Metal Halide that depreciates 40-60%
- **Vented Housing** construction for optimal ballast performance and long life
- **Instant On...Instant Restrike...No Flicker!** Color consistent across all fixtures
- **Auto On/Off Occupancy Sensors Factory Installed** and paired with Programmed Start ballasts
- **Superior Visual Comfort Over HID** with higher CRI from AEI's fluorescent fixtures including a wide range of color temperatures

## SPECIFICATIONS

**HOUSING:** - Code Gauge steel body with post powdercoating standard. Properly vented housing keeps ballast cool. Cold storage housing without venting available on request.

**REFLECTIVE:** Specular Miro4® reflectors standard. White reflectors are optional. Consult AEI for other reflector options.

**ELECTRICAL:** Wired per specified voltage using electronic ballast rated for 75 degree Celsius (C). 90 degree Celsius ballast rating available for high ambient applications. The TT5-2X2S fixtures are U.L. Listed for damp locations. TT5 lamps are rated at 15,000 & 20,000 hours.

**MOUNTING:** The HiMax TT5-2X2S fixtures are designed to be surface mounted.

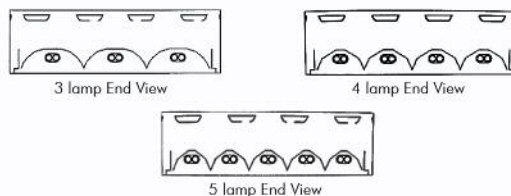
## Featuring "Push Button Access"



- EASY ACCESS**  
No Parts To Drop
- REDUCED LABOR**  
Opens In Seconds
- SAVES MONEY**  
Exclusive Features

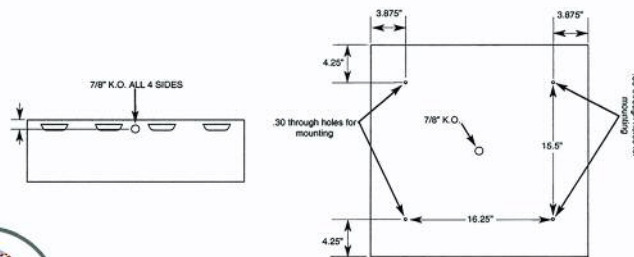
Wireway access in seconds without removing lamps or use of any tools!

## DIMENSIONS



	Length	Width	Height
TT5-2X2S-3, 4 & 5 LAMP	24"	24"	7"

## INSTALLATION DIAGRAM



## ORDERING GUIDE



## BRINGING YOU OUT OF THE DARK AGES!

Fixture Model	Housing	# Of Lamps Wattage	Lens	Voltage	Lamp Color	Options	Mounting
TT5-2X2S							
		<b># OF LAMPS</b> 3=3 Lamps 4=4 Lamps 5=5 Lamps <b>WATTAGE</b> 40=40 Watts 50=50 Watts 55=55 Watts	CL=Clear Acrylic PR=Prismatic PC=Polycarbonate VR=Vandal Resistant Leave Blank If No Lens	<b>VOLTAGE</b> 12=120V 27=277V 34=340V 48=480V UN=Universal UN90=90C Universal	30=3000K 35=3500K 41=4100K 50=5000K Leave Blank If No Lamps	<b>SENSORS</b> OC1=Asie Sensor OC3=360 Degree Sensor OCLT=360 Degree Low Temp Sensor Consult Factory For More Options <b>CORDS / PLUGS</b> X'C=Length + Cord Only X'CX=Length/Cord + Style/Plug Consult Factory For More Options <b>BALLASTS</b> EMXXXX=Emergency Ballast/Lumens DIM=Dimming Ballast <b>HOUSING/REFLECTORS</b> WH=White Reflector CT=Cold Temp (no venting)	CST=Custom Consult Factory For Custom Applications & Custom Ordering Number CST=Custom Mounting Consult Factory. This may include knock out placement or pre-drilled mounting holes.

**CONSULT**  
AEILighting.com  
for  
Photometric  
Information  
On This  
Fixture

### AEI LIGHTING INC.

1113 West Birchwood Avenue  
Mesa, AZ 85210  
TEL 480.733.6594  
FAX 480.733.6596  
WEB www.aeilighting.com

Project Name \_\_\_\_\_ Fixture Type \_\_\_\_\_

Catalog # \_\_\_\_\_ Quantity \_\_\_\_\_

ADVANCED ENERGY IDEAS, INC.

TT5-2X2S