

# T8IH 332 632

3- & 6-Lamp T8 4FT & 8FT  
Industrial High-Bay Fixtures



**HiMax** Energy Saving High-Performance  
Fluorescent Lighting Systems

## FEATURES & BENEFITS

- Tool-Free Maintenance** - AEI leads the industry with access to all internal components without the use of tools.
- Over 50% Energy Savings Compared to HID** - New T8 Lamp/Electronic Ballast combinations save more than 50% over older HID and T12 Fluorescent lighting systems.
- Longer Lamp Life For T8!** T8 lamps are rated for up to 36,000 hours, nearly twice that of typical fluorescent and HID lamps when used with programmed start ballasts.
- 95% Lumen Maintenance For T8** - HID light levels drop as much as 60% as the lamps age. New T8 light levels maintain up to 95% over the life of the lamp.
- Instant On...Instant Restrike...No Flicker!** T8 ballast technology eliminates flicker and provides instant on & instant restrike while maintaining light levels during power dips & peaks.
- Cool Operation** - Vented aluminum housing construction provides optimal ballast performance and long life.
- Color Quality and Consistency** - T8 lamps are 70CRI or greater, providing excellent color quality over the life of the lamp, enhancing visual comfort.
- Factory Installed Occupancy Sensors** - Auto on/off functions are available for energy savings and extended life using Programmed Start Ballast technology and integral sensor design.

## SPECIFICATIONS

**CONSTRUCTION:** 0.040" Aluminum Housing is standard. Housing is vented to keep ballast cool in a wide range of operating temperatures.

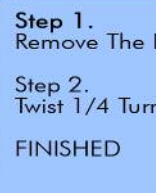
**REFLECTOR DESIGN:** Specular Miro4® reflectors standard. White reflectors are optional. Consult AEI for other reflector options.

**ELECTRICAL:** 120 or 277V, 75°C instant start ballasts are standard. Universal voltage or 347, 480V and 90°C ballasts as well as other options are available upon request. Emergency ballasts available.

**MOUNTING:** Surface, Chain or Pendant mounting options available. See our Labor Saving Installation Guide for industry exclusive mounting designs.

**LISTING:** UL Listed for Damp Locations.

## Featuring "Tool-Free Access"



**EASY ACCESS**  
No Tools Needed  
**REDUCED LABOR**  
Replaces In Seconds  
**SAVES MONEY**  
Exclusive Features

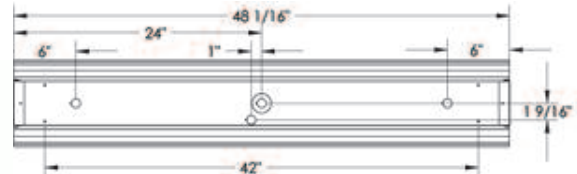
- Step 1.  
Remove The Lamps
- Step 2.  
Twist 1/4 Turn Fasteners 90 Degrees
- FINISHED

## DIMENSIONS



	Length	Width	Height
T8IH-332 4FT	48.06"	8.31"	4.75"
T8IH-632 8FT	96.06"	8.31"	4.75"

## INSTALLATION DIAGRAM



\*Dimensions are subject to change without notice. Consult factory for details.

## ORDERING GUIDE



## BRINGING YOU OUT OF THE DARK AGES!

Fixture Model

Length

# Of Lamps  
Wattage

Voltage  
Ballast Factor

Lamp Color

Fixture  
Options

Mounting

T8IH

Length

# Of Lamps  
Wattage

Voltage  
Ballast Factor

Lamp Color

Fixture  
Options

Mounting

**CONSULT**  
AEILighting.com  
for  
Photometric  
Information  
On This  
Fixture

**LENGTH**  
4FT=4 FEET 8FT=8 FEET

**# OF LAMPS**  
3=3 Lamps  
6=6 Lamps

**WATTAGE**  
32=32W 4-foot Nominal Length  
Consult Factory When Application  
Requires Other T8 Wattages

**VOLTAGE**  
12=120V 27=277V 34=347V  
48=480V UNI=120-277V  
90C=120-277V 90°C

**BALLAST FACTOR**  
ISL=Instant Start Low Ballast Factor  
ISN=Instant Start Normal Ballast Factor  
ISH=Instant Start High Ballast Factor  
PS=Programmed Start / Rapid Start  
PSH=Programmed Start/ Rapid Start HB Factor  
PS Series ballast recommended  
with occupancy sensors

30=3000K 35=3500K  
41=4100K 50=5000K 65=6500K  
Leave Blank if No Lamps  
800 Series ballast factor  
of color for 700 Series applications

**SENSORS**  
OCI=Aisle Sensor OC3=360 Degree Sensor  
OCU=360 Degree Low Temp Sensor  
When specific brand of sensor is required,  
please add to 'notes' line in purchase order.  
Consult Factory For More Sensor Options.

**CORDS / PLUGS**  
XC=Length + Cord Only  
XCXP=Length/Cord + Style/Plug  
Consult Factory For More Options

**BALLASTS**  
EMXXX=Emergency Ballast/Lumens  
DIM=Dimming Ballast  
Consult Factory For Detailed Ballast Options

**HOUSING/REFLECTORS**  
WH=White Reflector

**OTHER**  
CTD=Cooled Lamps TG=Tube Guards  
CST=Custom  
Consult Factory For Custom Applications &  
Custom Ordering Number

VH=V-Hook HK=3/4" Hook  
GPHX=Grippe + Style (L, S, T)  
Consult Options Guidelines For  
Grippe Details  
HUB=3/4" Hub  
X\*ST=Length + Galvanized Stem  
SB=3/4" Slide Box Assembly  
Hub and Stem Optional  
SP=3/4" Single Point Bracket  
Hub and Stem Optional

**AEI LIGHTING INC.**  
1113 West Birchwood Avenue  
Mesa, AZ 85210  
TEL 480.733.6594  
FAX 480.733.6596  
WEB www.aeilighting.com

Project Name \_\_\_\_\_ Fixture Type \_\_\_\_\_

Catalog # \_\_\_\_\_ Quantity \_\_\_\_\_

ADVANCED ENERGY IDEAS, INC. T8IH 332 632