

T8IE 332 432 632 832

3, 4, 6 & 8 Lamp T8
4FT & 8FT High-Bay
I-Beam Fixtures



HiMax Energy Saving High-Performance Fluorescent Lighting Systems

FEATURES & BENEFITS

- Tool-Free Maintenance** - AEI leads the industry with access to all internal components without the use of tools.
- Over 50% Energy Savings Compared to HID** - New T8 Lamp/Electronic Ballast combinations save more than 50% over older HID and T12 Fluorescent lighting systems.
- Longer Lamp Life For T8!** T8 lamps are rated for up to 36,000 hours, nearly twice that of typical fluorescent and HID lamps when used with programmed start ballasts.
- 95% Lumen Maintenance For T8** - HID light levels drop as much as 60% as the lamps age. New T8 light levels maintain up to 95% over the life of the lamp.
- Instant On...Instant Restrike...No Flicker!** T8 ballast technology eliminates flicker and provides instant on & instant restrike while maintaining light levels during power dips & peaks.
- Cool Operation** - Vented aluminum housing construction provides optimal ballast performance and long life.
- Color Quality and Consistency** - T8 lamps are 70CRI or greater, providing excellent color quality over the life of the lamp, enhancing visual comfort.
- Factory Installed Occupancy Sensors** - Auto on/off functions are available for energy savings and extended life using Programmed-Start Ballast technology and integral sensor design.

SPECIFICATIONS

CONSTRUCTION: Aluminum housing is standard for the T8IE. Housing is vented to keep ballast cool in a wide range of operating temperatures.

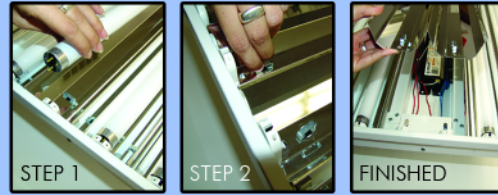
REFLECTOR DESIGN: Specular Miro4® reflectors standard. White reflectors are optional. Consult AEI for other reflector options.

ELECTRICAL: 120 or 277V, 75°C instant start ballasts are standard. Universal voltage or 347, 480V & 90°C ballasts as well as other options are available upon request. Emergency ballasts available.

MOUNTING: Surface, Chain or Pendant mounting options available. See our Labor Saving Installation Guide for industry exclusive mounting designs.

LISTING: UL Listed for Damp Locations.

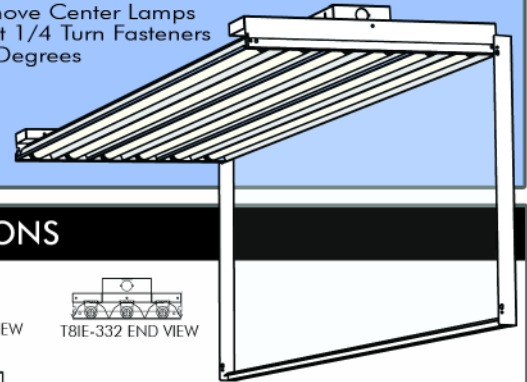
Featuring "Tool-Free Access"



EASY ACCESS
100% Tool Free
REDUCED LABOR
Opens In Seconds
SAVES MONEY
Exclusive Features

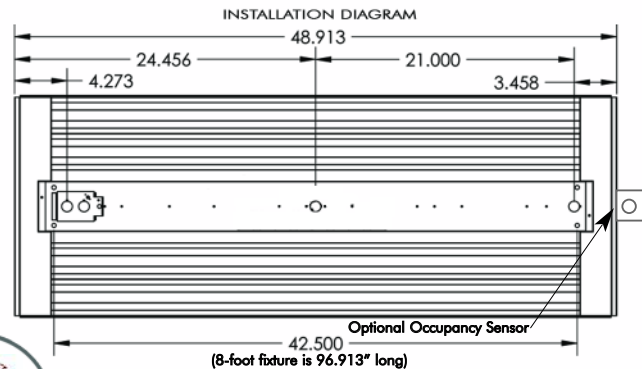
Step 1. Remove Center Lamps
Step 2. Twist 1/4 Turn Fasteners 90 Degrees

Plus...
PUSH BUTTON
LENS DOOR



DIMENSIONS

Model	Length	Width	Height
T8IE-332	48.91"	9.31"	3.39"
T8IE-432	48.91"	12.36"	3.39"
T8IE-632	48.91"	18.29"	3.39"
T8IE-832	48.91"	18.29"	3.39"



*Dimensions are subject to change without notice. Consult factory for details.

ORDERING GUIDE



BRINGING YOU OUT OF THE DARK AGES!

Fixture Model	Length	# Of Lamps Wattage	Lens	Voltage & Ballast Factor	Lamp Color	Fixture Options	Mounting	
T8IE								
CONSULT AEILighting.com for Photometric Information On This Fixture	LENGTH 4FT=4-Foot Fixture 8FT=8-Foot Fixture or Tandem	# OF LAMPS 3=3 Lamps 4=4 Lamps 6=6 Lamps 8=8 Lamps WATTAGE 32=32W 4-Foot Nominal Length Consult Factory When Application Requires Other T8 Wattages	CL=Clear Acrylic PR=Prismatic PC=Polycarbonate VR=Vandal Resistant Leave Blank If No Lens	VOLTAGE 12=120V 27=277V 34=347V 48=480V UNI=120-277V 90C=120-277V 90°C BALLAST FACTOR ISL=Instant Start Low Ballast Factor ISN=Instant Start Normal Ballast Factor ISH=Instant Start High Ballast Factor PS=Program Start / Rapid Start PSH=Programmed Start/ Rapid Start HB Factor PS Series ballast recommended with occupancy sensors. 480V not available in all ballast factors.	30=3000K 35=3500K 41=4100K 50=5000K 65=6500K Leave Blank If No Lamps	OCI=Idle Sensor OC3=360 Degree Sensor OCLI=360 Degree Low Temp Sensor When specific brand of sensor is required, please add to "notes" line in purchase order. Consult Factory For More Sensor Options. CORDS / PLUGS XC=Length + Cord Only XCX=Length/Cord + Style/Plug Consult Factory For More Options	EM=Emergency Ballast/Lumens DIM=Dimming Ballast Consult Factory For Ballast Options HOUSING/REFLECTORS UL=Uplight WH=White Reflector CT=Cold Temperature Housing (no vents) Uplight option requires notations in purchase order specifying number of UL rows (even numbers only)	OTHER CTD=Cooled Lamps, TG=Tube Guards CST=Custom Consult Factory For Custom Apps & Ordering Number VH=V-Hook HK=3/4" Hook GPX=Grippler + Style (L,S,Y) Consult Options Guidelines For Grippler Details HUB=3/4" Hub X*ST=Length + Galvanized Stem SB=3/4" Slide Box Assembly Hub and Stem Optional SP=3/4" Single Point Bracket Hub and Stem Optional

AEI LIGHTING INC.
1113 West Birchwood Avenue
Mesa, AZ 85210
TEL 480.733.6594
FAX 480.733.6596
WEB www.aeilighting.com

Project Name _____ Fixture Type _____

Catalog # _____ Quantity _____

ADVANCED ENERGY IDEAS, INC.
T8IE 332 432 632 832