

T5IH 354 654

3- & 6-Lamp T5HO
4FT & 8FT High-Bay Fixtures



Himax Energy Saving High-Performance
Fluorescent Lighting Systems

FEATURES & BENEFITS

- Tool-Free Maintenance** - AEI leads the industry with access to all internal components without the use of tools.
- Over 50% Energy Savings Compared to HID** - T5HO lamps and ballasts save more than 50% over older HID and T12 Fluorescent lighting systems.
- Longer Lamp Life For T5HO!** T5HO lamps are rated for up to 35,000 hours, nearly twice that of typical fluorescent and HID lamps.
- 95% Lumen Maintenance For T5HO** - HID light levels drop as much as 60% as the lamps age. T5HO light levels maintain 95% over the life of the lamp.
- Instant On...Instant Restrike...No Flicker!** T5HO ballast technology eliminates flicker and provides instant on and instant restrike while maintaining light levels during dips and peaks.
- Cool Operation** - Vented aluminum housing construction provides optimal ballast performance and long life.
- Color Quality and Consistency** - T5HO lamps are 80CRI or greater, providing excellent color quality over the life of the lamp, thus enhancing visual comfort.
- Factory Installed Occupancy Sensors** - Auto on/off functions are available for energy savings and extended life using Programmed-Start Ballast technology and integral sensor design.

SPECIFICATIONS

CONSTRUCTION: Aluminum Housing is standard. Code Gauge Post-Powdercoat CRS Housing is optional. Housing is vented to keep ballast cool in a wide range of operating temperatures.

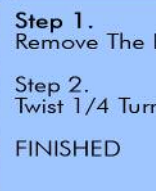
REFLECTOR DESIGN: Standard white ballast cover is 90% reflective. Optional specular Miro4® & white reflectors available. Narrow and wide distribution offered. Consult AEI for other options.

ELECTRICAL: 120 or 277V, 75°C programmed start ballasts standard. Universal voltage or 347 and 480V and 90°C ballasts as well as other options are available upon request. Emergency ballasts available.

MOUNTING: Surface, Chain or Pendant mounting options available. See our Labor Saving Installation Guide for mounting designs.

LISTING: UL Listed for Damp Locations.

Featuring "Tool-Free Access"



EASY ACCESS
No Tools Needed
REDUCED LABOR
Replaces In Seconds
SAVES MONEY
Exclusive Features

Step 1.
Remove The Lamps

Step 2.
Twist 1/4 Turn Fasteners 90 Degrees

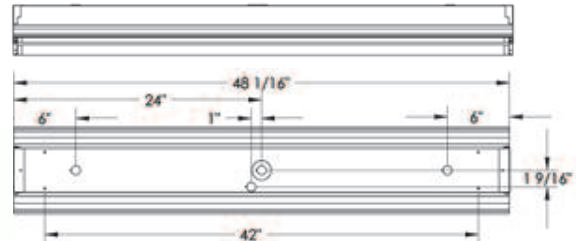
FINISHED

DIMENSIONS



	Length	Width	Height
T5IH-354 4FT	48.06"	8.31"	4.75"
T5IH-654 8FT	96.06"	8.31"	4.75"

INSTALLATION DIAGRAM



*Dimensions are subject to change without notice. Consult factory for details.

ORDERING GUIDE



BRINGING YOU OUT OF THE DARK AGES!

Fixture Model	Length	# Of Lamps Wattage	Voltage Ballast Factor	Lamp Color	Fixture Options	Mounting
T5IH						

CONSULT
AEILighting.com
for
Photometric
Information
On This
Fixture

<p>LENGTH 4FT=4-FOOT 8FT=8-FOOT Other lengths available. Consult Factory For Details & Availability</p>	<p># OF LAMPS 4-FOOT 3=3 Lamps 6=6 Lamps</p> <p># OF LAMPS 8-FOOT 6=6 Lamps 12=12 Lamps</p>	<p>WATTAGE 54=54W 4-foot Nominal Length Consult Factory When Application Requires Other TB Wattages</p> <p>VOLTAGE 12=120V 27=277V 34=347V 48=480V UNI=120-277V 90C=120-277V 90°C</p> <p>BALLAST FACTOR ISI=Instant Start Low Ballast Factor ISN=Instant Start Normal Ballast Factor ISH=Instant Start High Ballast Factor PS=Program Start / Rapid Start PSH=Program Start / Rapid Start HB Factor PS Series ballast recommended with occupancy sensors</p>	<p>30=3000K 35=3500K 41=4100K 50=5000K 65=6500K Leave Blank if No Lamps 800 Series Standard. Add 7' in front of color for 700 Series applications</p>	<p>SENSORS OCI=Alisk Sensor OC3=360 Degree Sensor OCCT=360 Degree Low Temp. Sensor When specific brand of sensor is required, please add to notes in purchase order. Consult Factory For More Sensor Options.</p> <p>CORDS / PLUGS X'C=Length + Cord Only X'CKP=Length/Cord + Style/Plug Consult Factory For More Options</p> <p>BALLASTS EMXXXX=Emergency Ballast/Lumens DIM=Dimming Ballast Consult Factory For Detailed Ballast Options</p> <p>HOUSING/REFLECTORS WH=White Reflector</p> <p>OTHER CTD=Cooled Lamps TG=Tube Guards CS=Custom Consult Factory For Custom Applications & Custom Ordering Number</p>	<p>VH=V-Hook HK=3/4" Hook GRLX=Grippler + Style (L,S,T) Consult Options Guidelines For Grippler Details HUB=3/4" Hub X'ST=Length + Galvanized Stem SB=3/4" Slide Box Assembly Hub and Stem Optional SP=3/4" Single Point Bracket Hub and Stem Optional</p>
--	---	---	---	--	--

AEI LIGHTING INC.
1113 West Birchwood Avenue
Mesa, AZ 85210
TEL 480.733.6594
FAX 480.733.6596
WEB www.aeilighting.com

Project Name _____ Fixture Type _____
Catalog # _____ Quantity _____

ADVANCED ENERGY IDEAS, INC.

T5IH 354 654