

T5EX 454 654

4- & 6-Lamp 4-Foot T5 High-Bay Fixture for Extreme Environments



Himax Energy Saving High-Performance Fluorescent Lighting Systems

FEATURES & BENEFITS

- **Over 50% Energy Savings Compared to HID** - New T5HO Lamp/Electronic Ballast combinations save more than 50% over older HID and T12 Fluorescent lighting systems.
- **Longer Lamp Life For T5HO!** T5HO lamps are rated for up to 36,000 hours, nearly twice that of typical fluorescent and HID lamps when used with programmed start ballasts.
- **95% Lumen Maintenance For T5HO** - HID light levels drop as much as 60% as the lamps age. New T8 light levels maintain up to 95% over the life of the lamp.
- **Instant On...Instant Restrike...No Flicker!** T5HO ballast technology eliminates flicker and provides instant on & instant restrike while maintaining light levels during power dips & peaks.
- **Cool Operation** - Vented aluminum housing construction provides optimal ballast performance and long life.
- **Color Quality and Consistency** - T5HO lamps are 70CRI or greater, providing excellent color quality over the life of the lamp, enhancing visual comfort.
- **Factory Installed Occupancy Sensors** - Auto on/off functions are available for energy savings and extended life using Programmed-Start Ballast technology and integral sensor design.

SPECIFICATIONS

CONSTRUCTION: 0.040" Aluminum Housing is standard. Housing is vented to keep ballast cool in a wide range of operating temperatures.

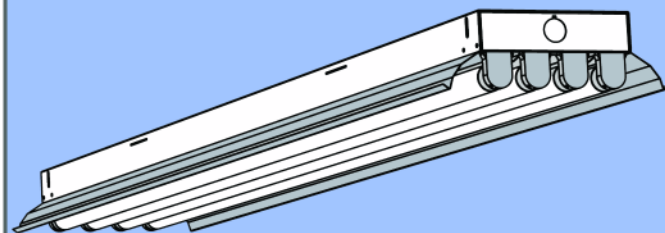
REFLECTOR DESIGN: Standard white ballast cover is 90% reflective. Optional specular Miro4® & white reflectors available. Narrow and wide distribution offered. Consult AEI for other options.

ELECTRICAL: 120 or 277V, 75°C instant start ballasts are standard. Universal voltage or 347, 480V and 90°C ballasts as well as other options are available upon request. Emergency ballasts available.

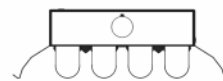
MOUNTING: Surface, Chain or Pendant mounting options available. See our Labor Saving Installation Guide for industry exclusive mounting designs.

LISTING: UL Listed for Damp Locations.

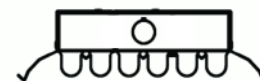
FEATURES 4- or 6-LAMP DESIGN



DIMENSIONS



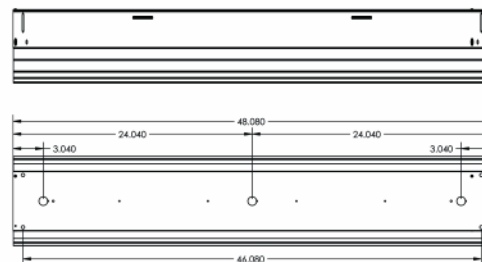
T5EX-454 END VIEW



T5EX-654 END VIEW

	Length	Width	Height	*For dimensions of sensed or custom fixtures consult factory or contact your local AEI representative
T5EX-454	48.13"	9.0"	2.90"	
T5EX-654	48.13"	9.0"	2.90"	

INSTALLATION DIAGRAM



*Dimensions are subject to change without notice. Consult factory for details.

ORDERING GUIDE



BRINGING YOU OUT OF THE DARK AGES!

Fixture Model	# Of Lamps Wattage	Voltage & Ballast Factor	Lamp Color	Fixture Options	Mounting
T5EX					
# OF LAMPS 4=4 Lamps 6=6 Lamps WATTAGE 54=54W 4-foot Nominal Length Consult Factory When Application Requires Other T8 Wattages	VOLTAGE 12=120V 27=277V 34=347V 48=480V UN1=120-277V 90C=120-277V 90°C BALLAST FACTOR ISL=Instant Start Low Ballast Factor ISN=Instant Start Normal Ballast Factor ISH=Instant Start High Ballast Factor PS=Program Start / Rapid Start PSH=Program Start/ Rapid Start HB Factor PS Series ballast recommended with occupancy sensors.	30=3000K 35=3500K 41=4100K 50=5000K 65=6500K Leave Blank if No Lamps 800 Series Standard. Add '7' in front of color for 700 Series applications.	SENSORS OCI=Active Sensor OC3=360 Degree Sensor OCL1=360 Degree Low Temp Sensor When specific brand of sensor is required, please add to 'notes' line in purchase order. Consult Factory For More Sensor Options. CORDS / PLUGS XC=Length + Cord Only X'CP=Length/Cord + Style/Plug Consult Factory For More Options BALLASTS E1XXXX=Emergency Ballast/Lumens DIM=Dimming Ballast Consult Factory For Ballast Options. This fixture may have some limitations. HOUSING/REFLECTORS WH=White Reflector OTHER CTD=Coated Lamps TG=Tube Guards CST=Custom Consult Factory For Custom Apps & Ordering Number	OTHER VH=V-Hook HK=3/4" Hook GPX=Grippler + Style (L,S,T) Consult Options Guidelines For Grippler Details HUB=3/4" Hub X'ST=Length + Galvanized Stem SB=3/4" Slide Box Assembly Hub and Stem Optional SP=3/4" Single Point Bracket Hub and Stem Optional	

CONSULT
AEILighting.com
for
Photometric
Information
On This
Fixture

AEI LIGHTING INC.
1113 West Birchwood Avenue
Mesa, AZ 85210
TEL 480.733.6594
FAX 480.733.6596
WEB www.aeilighting.com

Project Name _____ Fixture Type _____

Catalog # _____ Quantity _____

ADVANCED ENERGY IDEAS, INC.

T5EX 454 654