

Mounting Instructions for Wolfman

Yamaha Super Tenere XTZ1200 Pillion Top Rack PART # RTRP15

Read and understand these instructions prior to installation!

This kit contains the following:

Quantity	Description
1	Pillion rack
1	Pillion rack mount bracket
2	6mm x 1.00 x 70mm Flat head bolts
2	6mm x 1.00 x 14mm Flat head bolts
2	6mm Lock nut
2	5/8 x 1.700 Aluminum spacers

Tools required:

Blue Loctite or a medium thread locker

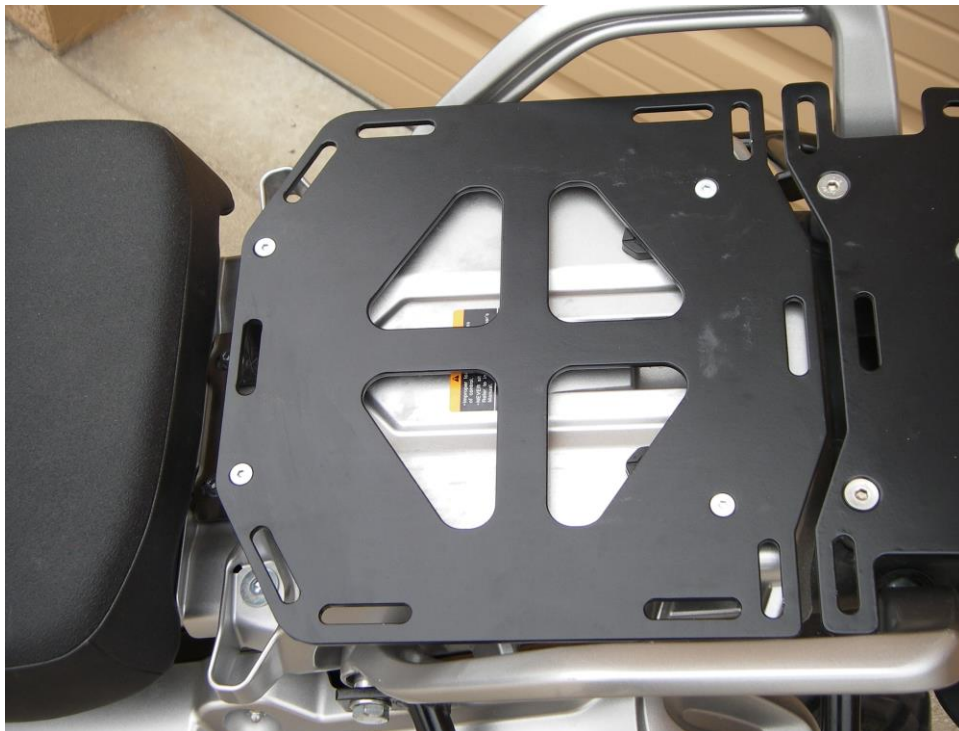
4mm Hex wrench

5mm Hex wrench

T25 Torx

Read and understand these instructions prior to installation!
Be sure to thread lock all bolts

Correctly mounted pillion rack on a Yamaha Super Tenere 1200.



1. Remove pillion seat and back right & left factory pillion rack bolt. **FIG 1**

2. Place pillion mount bracket in position where pillion seat previously mounted and loosely thread bolts – reuse factory pillion seat mounting bolts (do not tighten). **FIG 2**

FIG 1

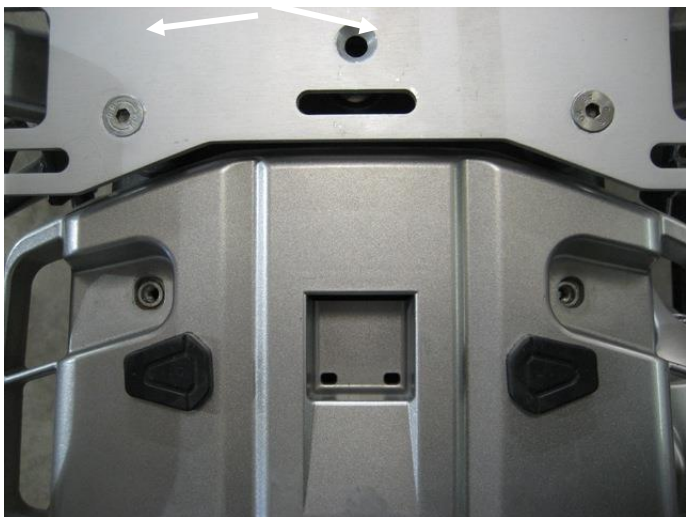
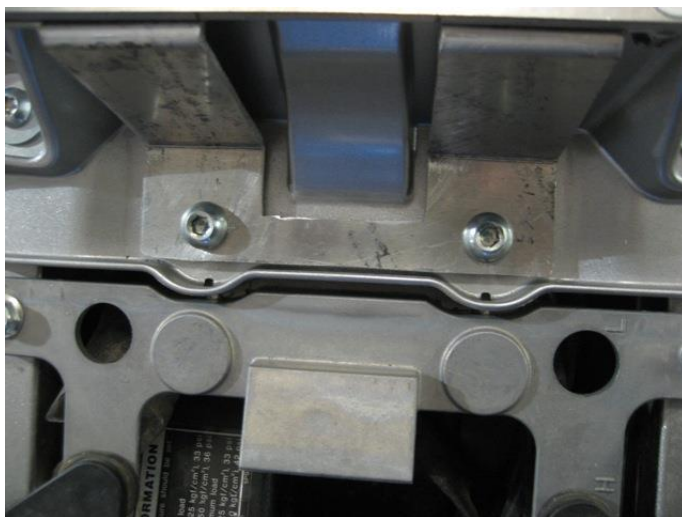


FIG 2



3. Place two 5/8 x 1.700 spacers in place where back factory pillion racks bolts were removed. **FIG 3**

4. Place pillion rack in place, using two 6mm x 1.00 x 70mm flat head bolts in back right & left mounting holes (do not tighten). **FIG 4**

FIG 3

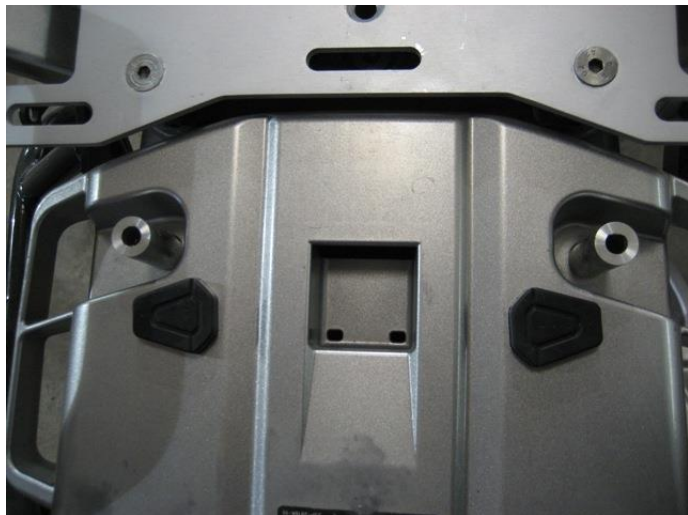


FIG 4



5. Using two 6mm x 1.00 x 14mm flat head bolts and 6mm nuts attach pillion rack to the front pillion rack mount bracket. **FIG 5**

FIG 5



6. Tighten all bolts snug.

****Periodically re-check all nuts and bolts to maintain rigidity and structural integrity****

If you have any questions call 800/535-8131 or email sales@wolfmanluggage.com.
Enjoy!