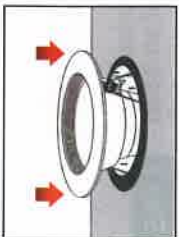


Step 6

- Push the retrofit luminaire gently upwards into the recessed can housing until trim is flush with the ceiling.

Restore power at the circuit breaker and your installation is complete.



UPHORIA™

LED DOWNLIGHT RETROFIT KIT

Instructional Manual



LIMITED WARRANTY:

This retrofit kit is warranted to be free from defect in workmanship and materials for 5 years from the date of purchase. If the kit fails earlier please return the product with the original register receipt to the place of purchase or contact: USHIO America, Inc. 5440 Carritos Ave. Cypress, CA 90630 for instruction on replacement. The replacement is the sole remedy available and liability for incidental or consequential damages is explicitly excluded.

SPECIAL NOTE:

This equipment has been tested and found to comply with the limits for a Class B digital device, pursuant to Part 15 of the FCC Rules. These limits are designed to provide reasonable protection against harmful interference in a residential installation. This equipment generates uses and can radiate radio frequency energy and, if not installed and used in accordance with the instructions, may cause harmful interference to radio communications. However, there is no guarantee that interference will not occur in a particular installation. If this equipment does cause harmful interference to radio and television reception, the user is encouraged to try to correct the interference by one or more of the following measures:

- Reorient or relocate the receiving antenna.
- Increase the separation between the equipment and receiver.
- Connect the equipment into an outlet on a circuit different from that to which the receiver is connected.
- Consult the dealer or an experienced radio/TV technician for help.

© 2014 USHIO America, Inc. All rights reserved.

USHIO

This retrofit kit will fit all standard recessed housings between 5 in./12.7 cm & 6 in./15.2 cm.

Important Safety Information:

Please read all instructions before installation. This retrofit kit will fit all standard recessed housings between 5 in. / 12.7 cm. and 6 in. / 15.2 cm. It is intended to retrofit type IC and NON-IC covered ceiling recessed lighting fixtures. This retrofit kit is compatible with most incandescent dimmers. Check www.uslho.com for a complete list of compatible dimmer options.

This retrofit kit can be used in dry, damp, and wet locations.

Warning:

"WARNING – Risk of fire or electric shock. LED Retrofit Kit installation requires knowledge of luminaires electrical systems. If not qualified, do not attempt installation. Contact a qualified electrician." Or equivalent in Format S24-L5.

"WARNING – Risk of fire or electric shock. Install this kit only in the luminaires that have the construction features and dimensions shown in the photographs and/or drawings." Or equivalent in Format S24-L5.

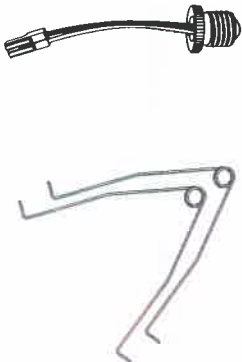
"Do not make or alter any open holes in an enclosure of wiring or electrical components during kit installation." In Format S24-L5.

"WARNING – To prevent wiring damage or abrasion, do not expose wiring to edges of sheet metal or other sharp objects." Or equivalent in Format S24-L5.

Lamp replacement instructions shall indicate the manufacturer's custom lamp part number and a method to order replacement lamps by phone, website, and/or mail. These instructions shall be included on an information sheet packaged with each unit.

Parts Included:

- 1 – E26 (Medium base) Socket Adapter. Other socket adapter types sold separately.
- 2 – Mounting springs

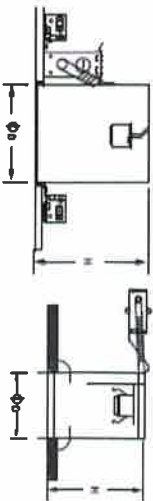


Installation Instructions:

Before installing the retrofit kit, turn off the power at the source (circuit breaker). After the power has been completely turned off, you can remove the existing lamp and trim from the recessed housing.

Now you have an empty recessed can housing which provides you easy access to the socket.

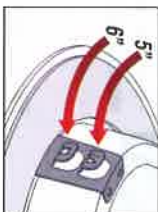
Check the dimensions of the recessed can and the socket size to make sure you have the proper kit that fits that housing.



Step 1

- Identify the proper position needed to match the recessed housing.

- 5 inch / 12.7cm – Top notch
- 6 inch / 15.2cm – Bottom notch

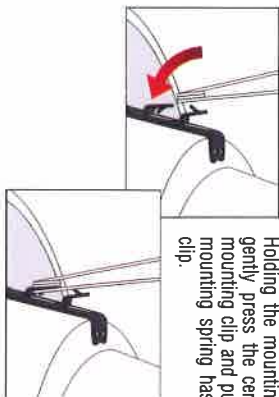


Step 2

- Attach mounting springs to retrofit luminaire.

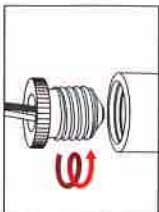
Holding the mounting spring securely, gently press the central coil over the mounting clip and push down until the mounting spring has clicked onto the clip.

Repeat the same way with the second mounting clip on the other side.



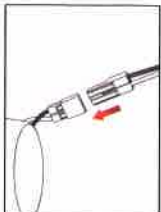
Step 3

- Screw the pigtail socket adapter into the recessed can's socket the same way you would screw in a light bulb.



Step 4

- Attach the quick connector adapter from the pigtail base to the retrofit luminaire.



Step 5

- Find the brackets on the inside of the recessed can housing. Gently squeeze the mounting springs on either side of the retrofit luminaire and guide them into the brackets on the inside of the recessed can housing.

Release the mounting springs and the retrofit luminaire will now be partially installed in the recessed can housing.

