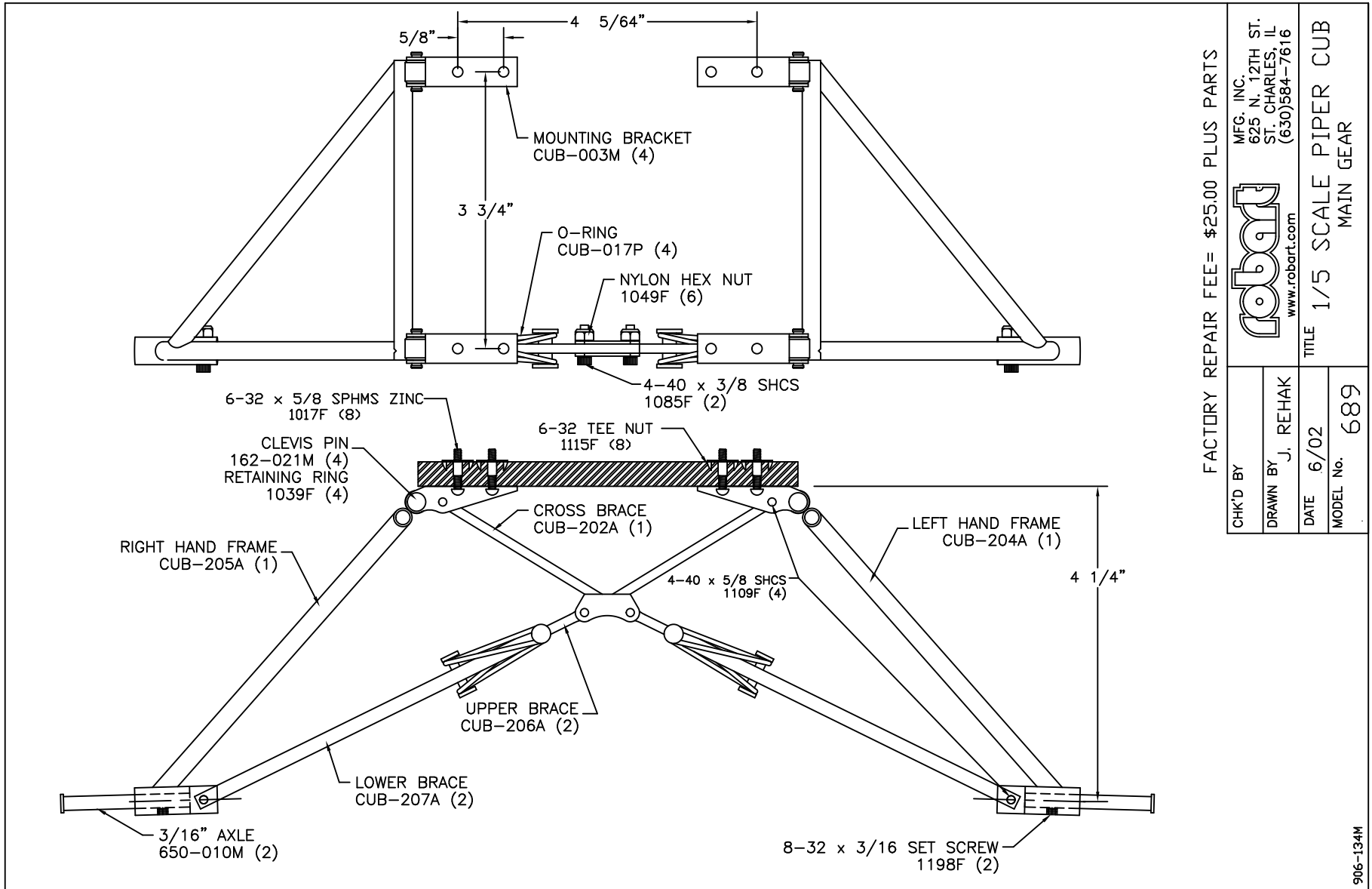
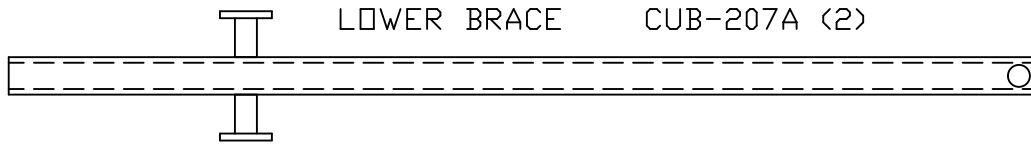
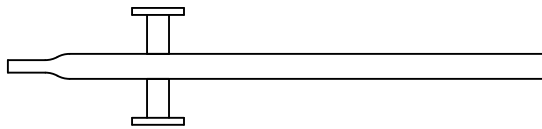


** THIS IS YOUR SPARE PARTS LIST. SAVE FOR FUTURE REFERENCE, ORDER BY PART NUMBER. CURRENT PRICES WILL BE QUOTED.**





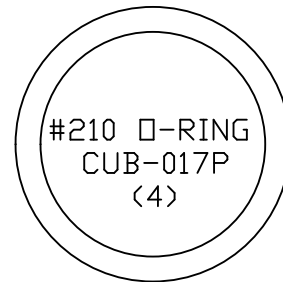
LOWER BRACE CUB-207A (2)



UPPER BRACE CUB-206A (2)



CLEVIS PIN
162-021M (4)



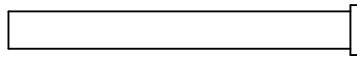
#210 O-RING
CUB-017P
(4)



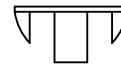
4-40 NYLON INSERT HEX NUT
1049F (6)



8-32 x 3/16 SET SCREW
1198F (2)



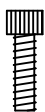
3/16" AXLE
650-010M (2)



6-32 TEE NUT
1115F (8)



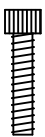
4-40 x 3/8 SHCS
1085F (2)



6-32 x 5/8 SPHMS ZINC
1017F (8)




4-40 x 5/8 SHCS
1109F (4)



RETAINING RING
1039F (8)

FULL SIZE PARTS LIST

CHK'D BY	 www.robart.com	MFG. INC. 625 N. 12TH ST. ST. CHARLES, IL (630)584-7616
DRAWN BY J. REHAK		
DATE 6/02	TITLE 1/5 SCALE PIPER CUB	
MODEL No. 689	MAIN GEAR	