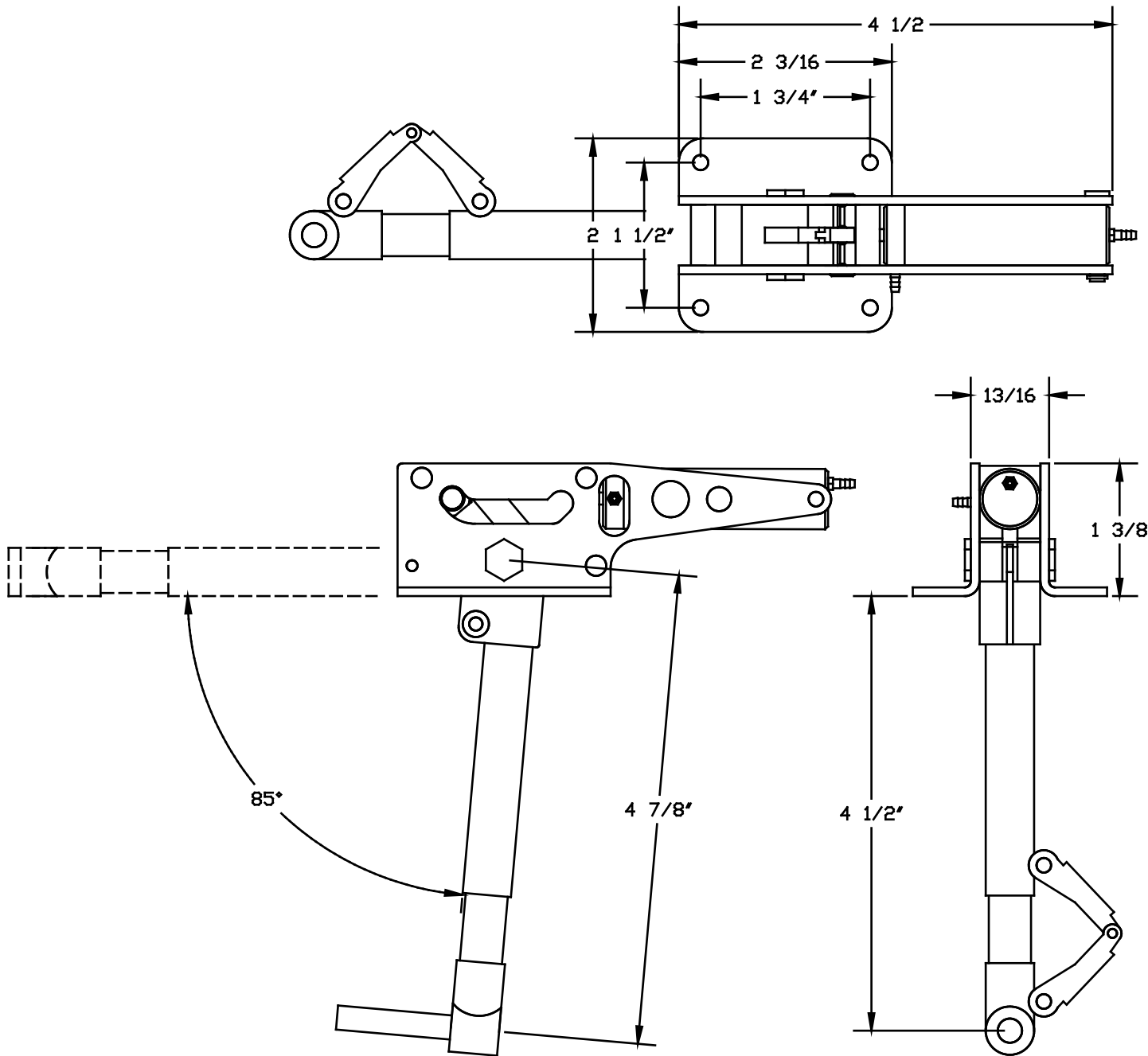



# BONANZA MAIN GEAR OPERATIONAL DETAIL

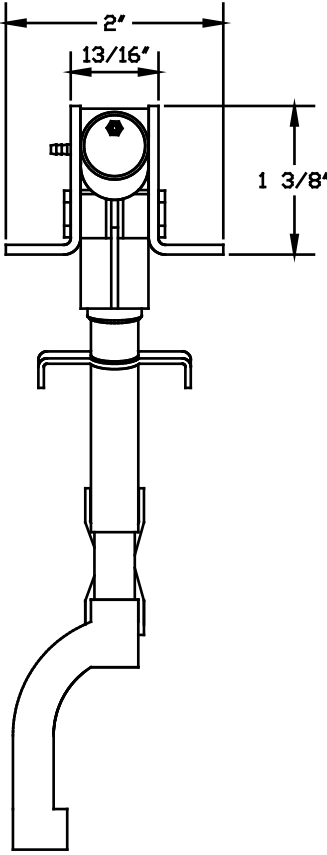
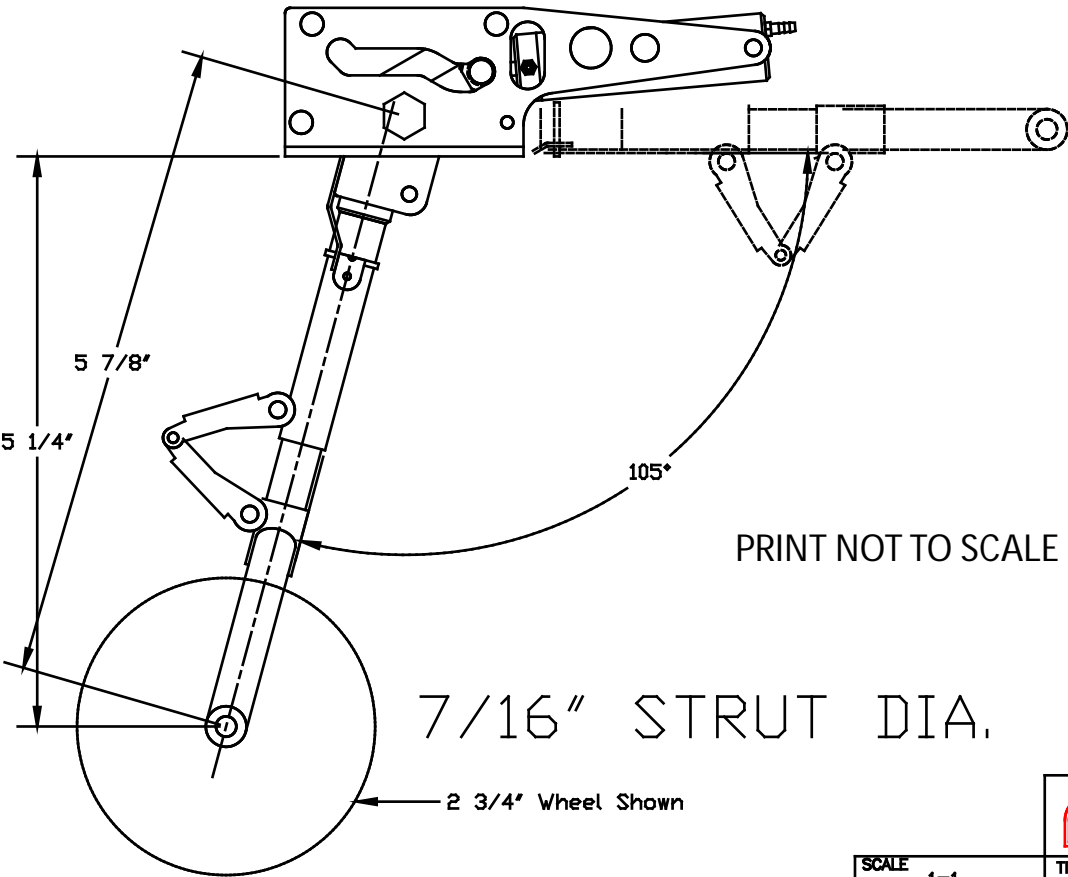
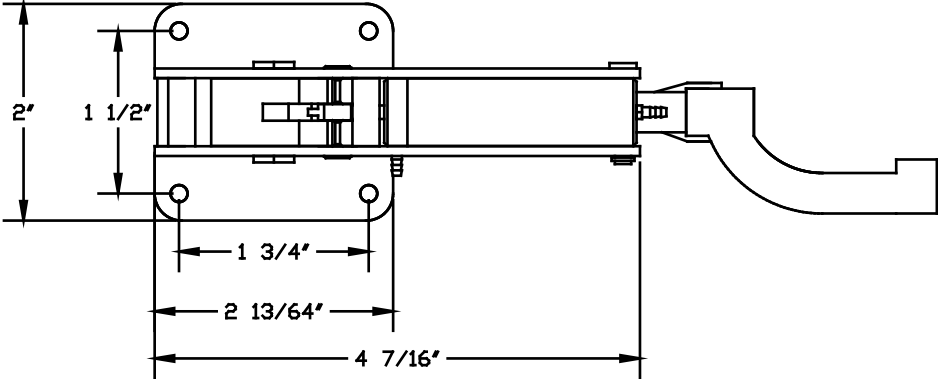
THIS DRAWING ITS CONTENTS AND INFORMATION, ARE CONFIDENTIAL, AND THE PROPERTY OF ROBERT MFG. INC. IT MAY NOT BE USED, COPIED, AND / OR TRANSMITTED TO ANY PERSON, FIRM, OR CORPORATION WITHOUT THE PRIOR WRITTEN APPROVAL OF ROBERT MFG. INC.



PRINT NOT TO SCALE

SCALE	1=1	 <div>MFG. INC. 625 N. 12TH ST. ST. CHARLES, IL</div>	
DRAWN BY	J. REHAK		
DATE	1-29-01	MAIN GEAR 80" BEECH BONANZA RH SHOWN	
CHK'D BY			
APP'D		DRAWING No. BZA	REV.

THIS DRAWING ITS CONTENTS AND INFORMATION, ARE CONFIDENTIAL, AND THE PROPERTY OF ROBERT MFG. INC. IT MAY NOT BE USED, COPIED, AND / OR TRANSMITTED TO ANY PERSON, FIRM, OR CORPORATION WITHOUT THE PRIOR WRITTEN APPROVAL OF ROBERT MFG. INC.



PRINT NOT TO SCALE

7/16" STRUT DIA.

2 3/4" Wheel Shown



MFG. INC.  
625 N. 12TH ST.  
ST. CHARLES, IL

SCALE	1=1	TITLE	NOSE GEAR BONANZA 81"
DRAWN BY	J. REHAK	DRAWING No.	BZA
DATE	2/01	REV.	