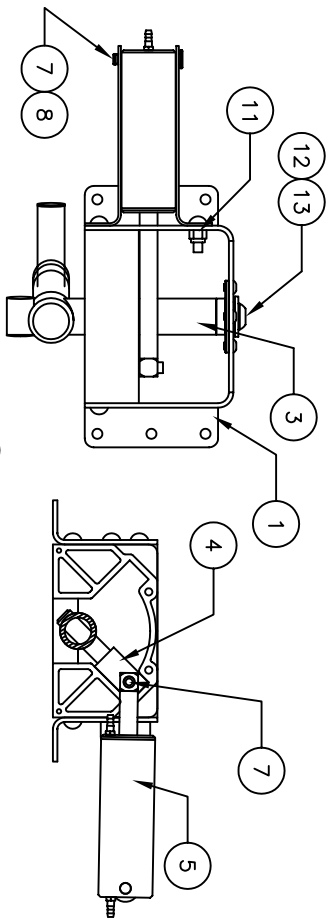


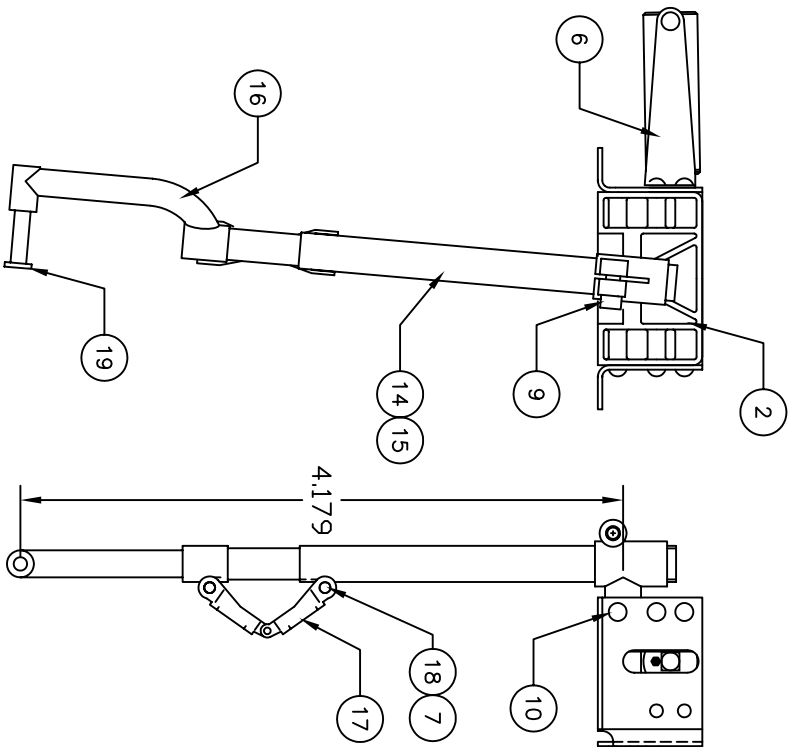
*** THIS IS YOUR SPARE PARTS LIST. SAVE FOR FUTURE REFERENCE, ORDER BY PART NUMBER. CURRENT PRICES WILL BE QUOTED.***

NOTE: RIGHT HAND OR LEFT HAND UNITS ARE DETERMINED AS IF SITTING IN AIRCRAFT COCKPIT

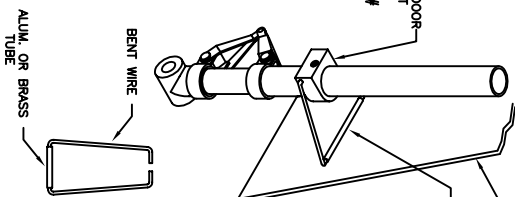


OPTIONAL GEAR DOOR BRACKET INSTALLATION INSTRUCTIONS

FOR USE ON 1/2" DIAMETER STRUTS



1. SLIP THE GEAR DOOR BRACKET DOWN OVER THE UPPER STRUT TUBE. DO NOT LOCK IN PLACE AT THIS TIME
2. CUT A SECTION OF 5/64 ID BRASS OR ALUMINUM TUBE APPROX. 3/4" LONG.
3. SLIP THE PIECE OF TUBING YOU JUST CUT ONTO A LENGTH OF 5/64 DIAMETER MUSIC WIRE. BEND THE WIRE INTO A SHAPE SIMILAR TO WHAT IS SHOWN HERE. YOU WILL HAVE TO VARY THE ACTUAL SHAPE AND LENGTH TO FIT YOUR INSTALLATION.
4. TEMPORARILY LOCK THE DOOR BRACKET IN POSITION ON THE STRUT. OPEN THE SPLIT END OF THE BENT WIRE AND INSERT INTO THE HOLES IN THE SIDES OF THE DOOR BRACKET.
5. TAPE THE BENT WIRE WITH TUBE TO THE INSIDE OF THE GEAR DOOR AND CHECK OPERATION OF THE GEAR AND DOOR. ADJUST THE POSITIONS OF THE BRACKET AND WIRE AS REQUIRED TO PROVIDE SMOOTH OPERATION AND A TIGHT FITTING DOOR. GLUE ONLY THE TUBE TO THE DOOR AFTER FINAL POSITIONING.



SPARE PARTS LIST

ITEM	DESCRIPTION	ASSY/PART #
1	FRAME ASSEMBLY	620-105A
2	FRONT HOUSING	620-001A
3	TRUNION ASSEMBLY RH/LH	622-102A RH/622-103A LH
4	CAM ASSEMBLY	620-104A
5	CYLINDER ASSEMBLY	620-108A
6	CYLINDER BRACKET	620-004M
7	RETAINING RING	1039F
8	CYL PIVOT PIN	150-012M
9	SOCKET HD CAP SCREW	1072F
10	#6-32 PRH MACH SCREW	1071F
11	ELASTIC STOP NUT #6-32	1041F
12	#10 FLAT WASHER	1075F
13	BH MACH SCREW #10-32	1021F
14	SPRING	150-019P
15	UPPER STRUT ASSEMBLY	622-115A
16	OFFSET STRUT ASSEMBLY	620-114A RH/620-113A LH
17	TORQUE LINK ASSEMBLY	620-112A
18	CLEVIS PIN (TORQUE LINK)	620-012M
19	AXLE BAG	620-142A
20		

LEFT HAND RETRACT ASSEMBLY SHOWN

CHK'D BY
DRAWN BY J. REHAK
DATE 6-11-02
MODEL No. 622



MFG. INC.
625 N. 12TH ST.
ST. CHARLES, IL
(630)584-7616

TITLE 1/6 P-51 MUSTANG
RETRACT ASSEMBLY