



Advanced Innovative Machinery

Installation Instructions

AIM PERFORMANCE PRODUCTS

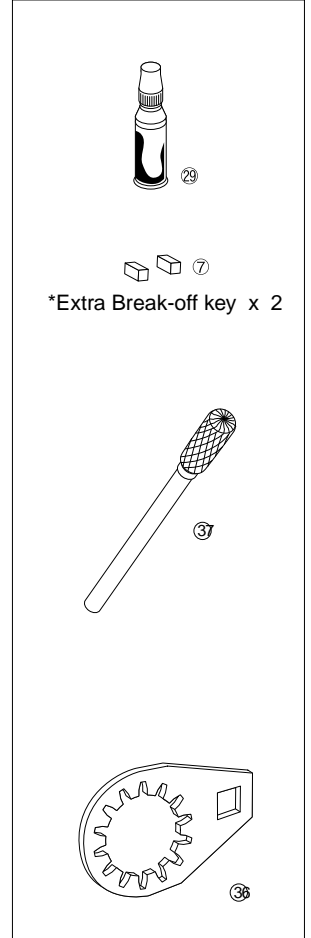
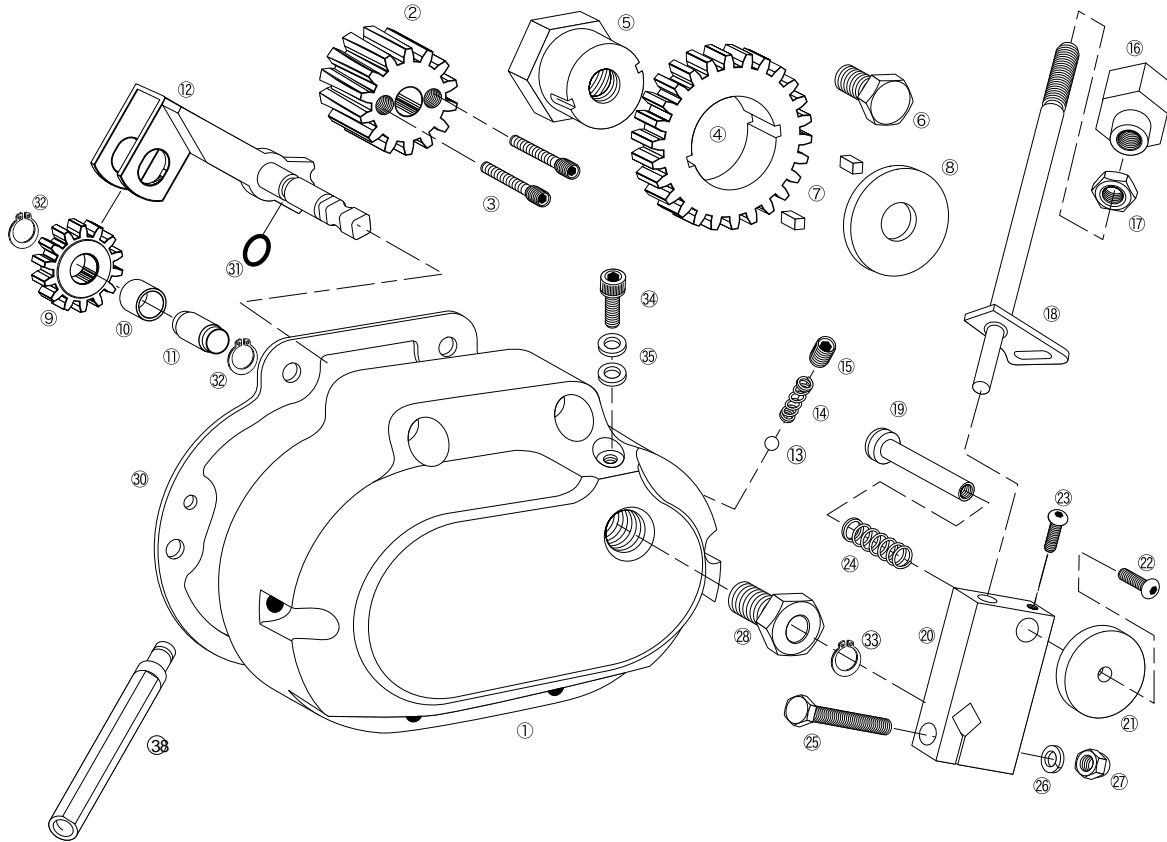
Parts#MB001-001

•Reverse Gear MAMBA (Monoblock for Cable operated)

For '07 and later Big Twin models (including '06 Dyna)

Read and become familiar with these installation instructions before start.

Monoblock for Cable operated (Parts#MB001-001)



Parts#	Name	Q	
①	PMB001-001	Gear housing	1
②	PMB001-002	Main gear	1
③	PMB001-003	Lock pin screw	2
④	PMB001-004	Counter gear	1
⑤	PMB001-005	Counter nut	1
⑥	PMB001-006	Bolt M10x10	1
⑦	PMB001-007	Break-off key	1
⑧	PMB001-008	Washer 10mm x 32mm	1
⑨	PMB001-009	Idler gear	1
⑩	PMB001-010	Idler bushing	1
⑪	PMB001-011	Idler pin	1
⑫	PMB001-012	Reverse shifter	1
⑬	PMB001-013	Ball bearing 8mm	1
⑭	PMB001-014	Detent spring	1
⑮	PMB001-015	Detent set screw	1
⑯	PMB001-016	Shift knob	1
⑰	PMB001-017	Nut 10mm	1
⑱	PMB001-018	Shift lever	1
⑲	PMB001-019	Shift lock pin	1
⑳	PMB001-020	Shift body	1

Parts#	Name	Q	
㉑	PMB001-021	Shift disc	1
㉒	PMB001-022	Bolt M6x10	1
㉓	PMB001-023	Bolt M5x15	1
㉔	PMB001-024	Spring	1
㉕	PMB001-025	Bolt M8x45	1
㉖	PMB001-026	Spring washer M8	1
㉗	PMB001-027	Nut M8	1
㉘	PMB001-028	Shifter bush bolt	1
㉙	PMB001-029	LockTite #620(Green)	1
㉚	PMB001-030	Gasket	1
㉛	PMB001-031	O ring	1
㉜	PMB001-032	Retaining ring	2
㉝	PMB001-033	Retaining ring(Stainless)	1
㉞	PMB001-034	Cap screw M6x10	1
㉟	PMB001-035	Washer	2
㊳	PMB001-089	Plate wrench	1
㊴	PMB001-078	5mm Bur	1
㊵	PMB001-079	12mm Extension rod	1



Advanced Innovative Machinery

AIM PERFORMANCE PRODUCTS

Parts#MB001-001

•Reverse Gear MAMBA (Monoblock for Cable operated)

For '07 and later Big Twin models (including '06 Dyna)

Installation Instructions 1/2

Read and become familiar with these installation instructions before start.

⚠ WARNING!!

To prevent accidental vehicle start-up, which could cause serious injury, disconnect negative(-) battery cable before proceeding.

Note

Touring models: '09 model is not required pipe modifications. Other years may be required the True Dual Pipe (Parts#MB004-003) or changing full exhaust system due to clearance issue.

Softail, Dyna models and some aftermarket exhaust pipes: May be required pipe modifications or changing exhaust pipe due to clearance issue.

1. Drain the transmission oil. Remove exhaust pipe if it is necessary.
2. Remove the Rightside transmission side cover and oil slinger assembly.
3. Remove two nuts from the mainshaft and countershaft.
4. Clean threads of mainshaft and countershaft using a parts cleaner to remove oil. Apply plenty of supplied LockTite# 620 (Green) 29 to thread of mainshaft.

5. Caution

Do not use impact wrench (Power tool) to tighten the main gear which causes breaking mainshaft.

Note

To prevent rotating mainshaft during tightening main gear. Shift into 1st gear and apply rear brake.

See Figure 1. Tighten the main gear to **80ft-lbs (109Nm)** using the supplied plate wrench 36.

6. Caution

Use Regular Drill which is less than 3000rpm. Do not use high speed air grinder and push the supplied 5mm bur very hard which causes breaking the bur.

Caution

Do not grind more than 0.945" (24mm) depth which causes damaging bearing inner race and bur.

See Figure 2. Using the drill and supplied 5mm bur 37, grind the mainshaft straight (This is for Lock pin) to the depth of **0.945"(24mm)** from the main gear surface through two holes of the main gear.

7. Completely clean the drilled holes. Use care to ensure debris does not enter transmission.
8. See Figure 3. Do not apply any LockTite to lock pin screw . Install Lock pin screws into the main gear. Tighten the lock pin screw to **8 ft-lbs**.
9. Clean thread of the counter nut using parts cleaner to remove oil. Apply plenty of the supplied LockTite#620 (Green) 29 to thread of countershaft.

10. Caution

Do not use impact wrench (Power tool) to tighten the counter nut which causes breaking countershaft.

Note

To prevent rotating countershaft during tightening main gear. Shift into 1st gear and apply rear brake.

See Figure 4. Tighten the counter nut to **80ft-lbs (109Nm)** using the 32mm socket.

Figure 1

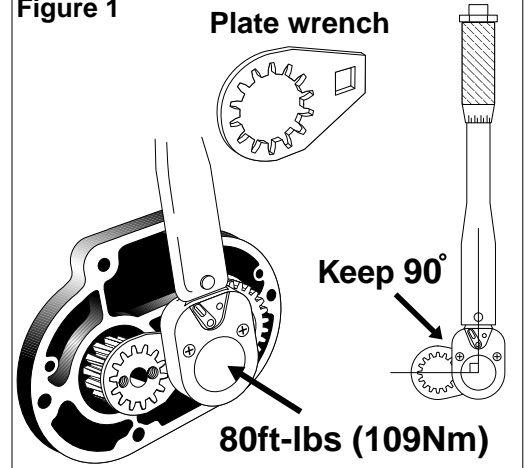


Figure 2

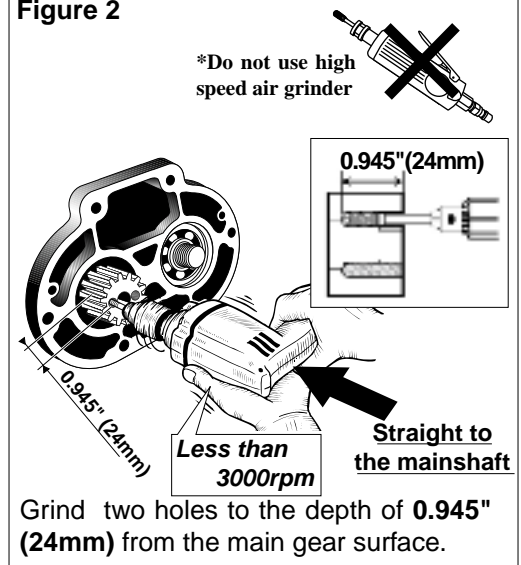
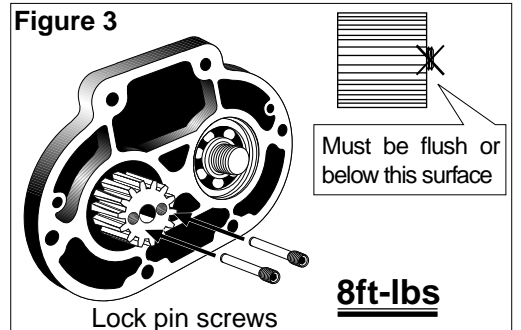


Figure 3





Advanced Innovational Machinery

Installation Instructions 2/2

AIM PERFORMANCE PRODUCTS

Parts#MB001-001

•Reverse Gear MAMBA (Monoblock for Cable operated)

For '07 and later Big Twin models (including '06 Dyna)

11. Apply grease between the counter nut and counter gear. Install the counter gear on to the counter nut.

12. **See Figure 5.** Align key grooves on the counter nut and counter gear. Install two break-off keys into the grooves.

13. **Note**

To prevent rotating countershaft during tightening main gear. Shift into 1st gear and apply rear brake.

See Figure 6. Apply LockTite#271 (Red) to the thread of bolt . Install bolt with the washer to the counter nut. Tighten the bolt to **56ft-lbs (75Nm)**.

14. **See Figure 7.** Remove the thrust bearing from oil slinger rod. Install thrust bearing to 12mm Extension rod

15. Install 12mm Extension rod assembly into the mainshaft.

16. Remove the Ball and Ramp from the side cover. Disconnect the clutch cable from the side cover.

17. Connect the clutch cable to the Reverse gear housing. Install the Ball and Ramp into the Reverse gear housing.

18. Install the side cover gasket and Reverse gear housing using stock bolts. Tighten the bolts to **9ft-lbs (12Nm)**.

19. Install the Reverse shift lever to the Reverse housing. Tighten the bolt to **27ft-lbs (37Nm)**.

20. Fill the transmission with transmission lubricant. See Harley-Davidson service manual.

21. Install the exhaust pipe if it is necessary.

22. Remove the derby cover. Loosen lock nut on clutch adjuster screw.

23. Adjust clutch. Turn clutch cable adjuster until there is a large amount of free play at clutch lever. To take up all free play, turn screw inward (clockwise) until lightly seated. Activate the clutch lever to verify the ball and ramp are completely seated. Back out adjusting screw 1/2 to 1 full turn. Tighten locknut while holding adjusting screw with an Allen wrench. Adjust the clutch cable. Ensure free play of 1/8in or more at the clutch lever pivot between the clutch holder and lever without pulling the cable.

24. Connect the battery.

Figure 4

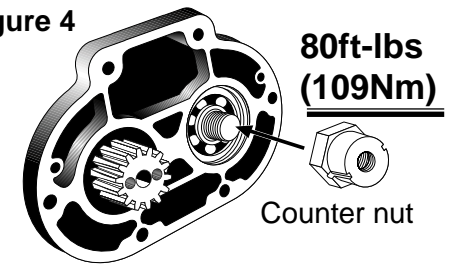


Figure 5

Apply grease between the counter boss and counter gear.

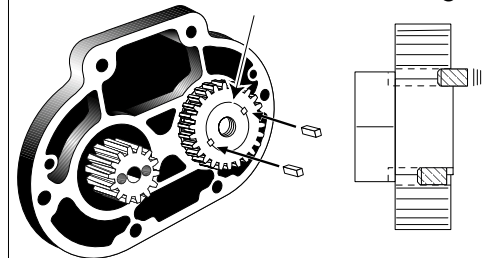


Figure 6

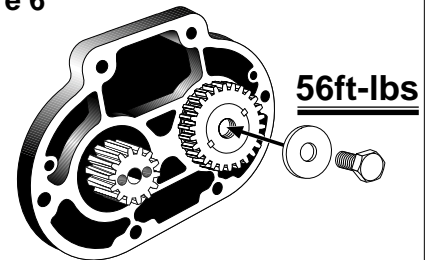
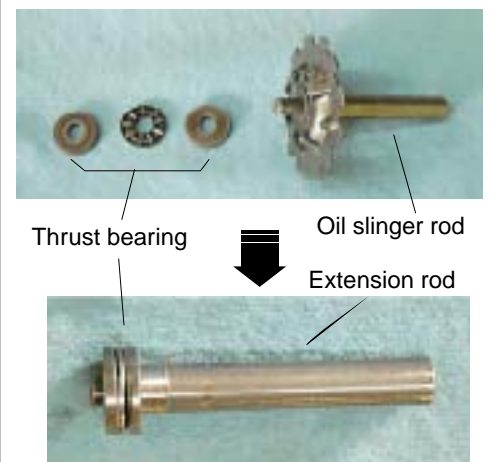


Figure 7



Warranty

One year warranty on Reverse Gear parts only.



Advanced Innovative Machinery

Reverse gear operation

AIM PERFORMANCE PRODUCTS

Parts#MB001-001

• Reverse Gear MAMBA (Monoblock for cable)
For '07 and later Big Twin models (including '06 Dyna)

Reverse gear operation

To engage reverse gear:

⚠ WARNING

- Do not shift into the reverse gear before shift into 1st gear to stop spinning all gears in the transmission.
- Use reverse gear in Neutral. Transmission must be in Neutral when engaging or using reverse gear.
- Reverse gear is intended for light duty use only.

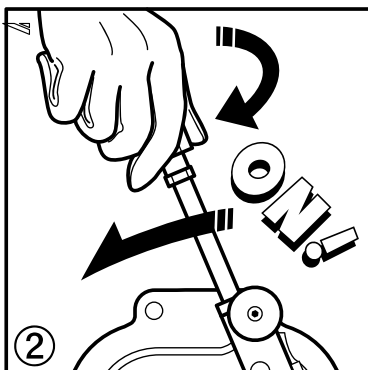
Failure to do so may result in breaking brake-off keys, damaged transmission or serious injury.

Note

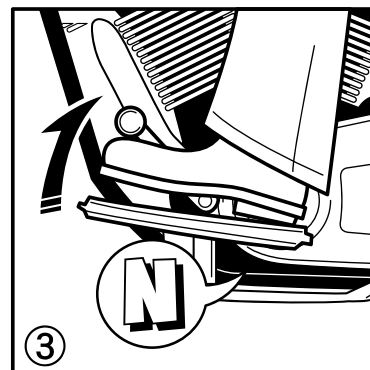
No throttle, just release (engine idle speed) the clutch lever until you are accustomed with motorcycle going reverse.



Disengage the clutch. Shift into the 1st gear to stop spinning all gears in the transmission to prevent damaged transmission when put into the reverse gear.

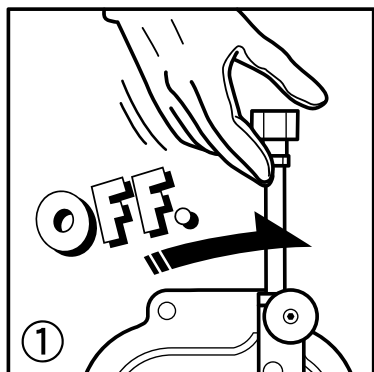


Twist the reverse handle (clockwise) and pull it back to shift into reverse gear. **Do not engage the clutch at this time.**



Shift transmission into Neutral. Engage the clutch to reverse motorcycle.

To disengage reverse gear:



⚠ WARNING

Disengage the reverse gear before engaging any forward gears. Failure to do so may result in breaking brake-off keys, damaged transmission or serious injury.

Shift the reverse lever twist and forward to disengage reverse gear.



Advanced Innovative Machinery

Supplement

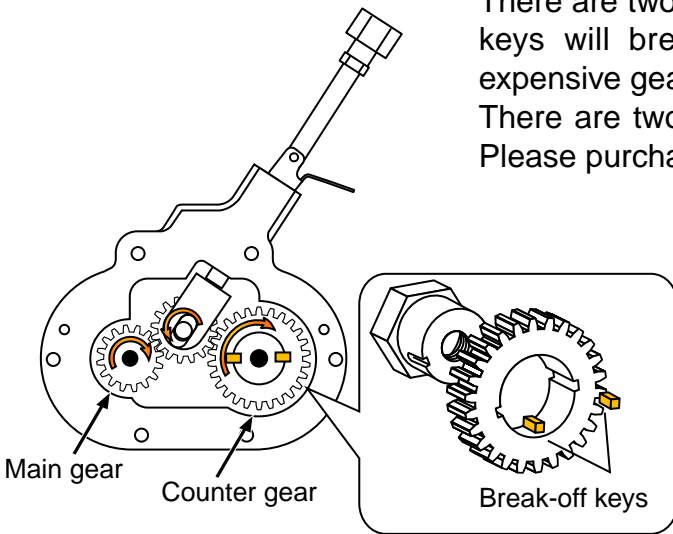
•Reverse Gear MAMBA (All models)

Read and become familiar with these installation instructions before start.

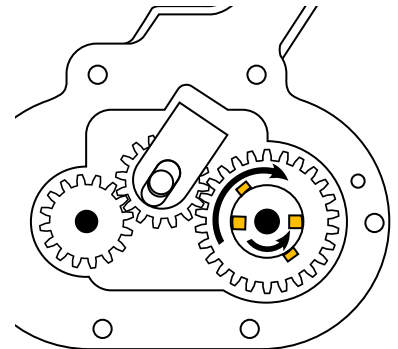
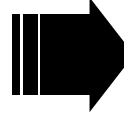
Break-off key replacement

There are two break-off keys between the counter nut and gear. These keys will break when excessive load was applied to save more expensive gears than break-off keys.

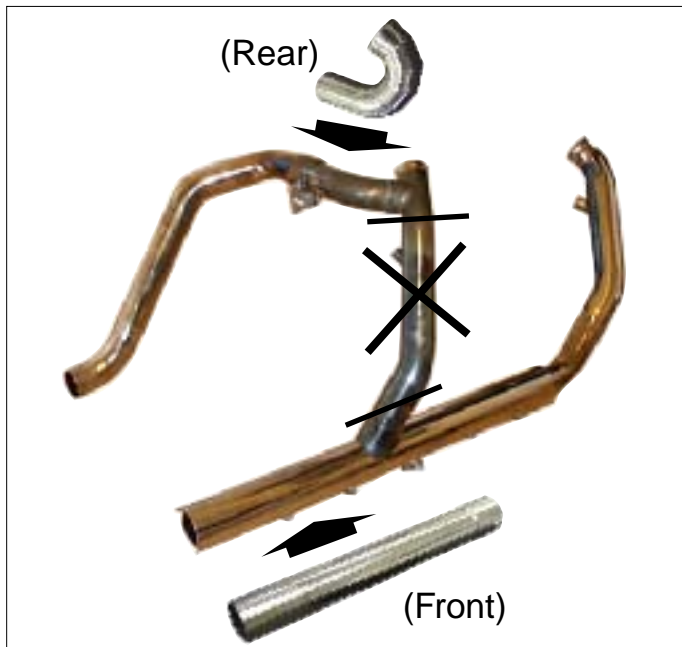
There are two of extra keys in the kit. If you break all keys in the kit. Please purchase new Break-off keys (Parts#PMB001-007).



Excessive load!!



True Dual Pipe



True Dual Pipe

For '87-'08 Touring model's stock exhaust pipe

- Eliminate cross over pipe to clear our Reverse gear kit for Touring models
- O2 sensor fitting for '07-'08 models
- Kit comes with O2 sensor plug for '87-'06 models

Parts#MB004-003 \$225.00



Advanced Innovative Machinery

AIM Corp.
16631 Gemini Lane
Huntington Beach, CA 92647
Phone: 714-848-3030 Fax: 714-848-3031

E-mail: info@aim-tamachi.com

www.aim-tamachi.com