

PRODUCT INFORMATION AND TECHNICAL DATA



MODERN | HOUSE | NUMBERS

## GENERAL PRODUCT INFORMATION

### ALUMINUM AND POWDER COATED NUMBERS, LETTERS AND SYMBOLS

4", 6", 8", 12" and 15" specifications are for aluminum and powder coated house numbers. Additional sizes available for an additional fee.

Four aluminum or powder coated plaques sizes available: 7" and 10" diameter circle, 8"x8" square or 6"x15" rectangle. Additional sizes available at no additional fee.

Six typefaces available in aluminum and powder coated house numbers: Palm Springs, SoCal, Backbay, Santa Barbara, Soho and South Beach. Additional fonts available at no additional cost.

Two typefaces available in aluminum and powder coated plaques: Palm Springs and SoCal

Aluminum products are finished with a clear sealant to protect them from UV, salt air and other environmental corrosives.

Powder Coated finish available in the following colors: flat black, glossy white red and antique brass. Additional colors available upon request at additional fee.

All aluminum and powder coated house numbers, letters, symbols and plaques are 3/8" thick.

All aluminum and powder coated house numbers/plaques have stud holes 4/8" (not visible from face of number)

All aluminum and powder coated house numbers/plaques include 3/16" diameter x 2" long steel studs and 3/16" inside diameter x 1/2" long aluminum spacers.

All aluminum and powder coated house numbers, letters, symbols and plaques include 1/2" aluminum spacers. For a subtle shadowed effect, standoffs are included to slide over studs.

### VINYL NUMBERS

3", 4", 6", 8" and 12" for vinyl. Additional sizes available at no additional cost.

Mailbox and curb stencils are made from high quality exterior grade vinyl with an adhesive back. User will remove both front and back layers. Available in eight colors (see <http://www.modernhousenumbers.com/product.aspx> for color chart).

### CURB STENCILS

Numbers of curb stencils are 4" tall. Surrounding vinyl border is 1/2".

Mailbox and curb stencils are made from high quality exterior grade vinyl with an adhesive back. User will remove both front and back layers.

### SUPPLIES REQUIRED FOR INSTALLATION - NOT INCLUDED

House number/plaque installation: drill, 11/64" drill bit (metal, wood or masonry depending on installation surface), hammer, epoxy (clear, multi-purpose and exterior grade) and masking tape. Also helpful are a rubber mallet, paper towels, ruler and lever. See attached for additional installation tips.

Mailbox vinyl installation: ruler, masking tape and materials to clean mailbox prior to insulation. See attached for additional installation tips.

Curb number installation: spray paint, painters paper roll, masking tape, ruler and wire brush/broom/etc. to clean curb prior to insulation. Curb stencil will not stick if curb is wet.

PRODUCT DIMENSIONS ALUMINUM AND POWDER COATED LETTERS, NUMBERS, SYMBOLS AND PLAQUES

PALM SPRINGS TYPEFACE

	number width						quantity of pre-drilled stud holes					
	3"	4"	6"	8"	12"	15"	4"	6"	8"	12"	15"	
0	3	4	6	8	12	15	2	2	2	4	4	
1	0.87	1.16	1.74	2.32	3.48	4.36	2	2	2	3	3	
2	2.13	2.84	4.26	5.68	8.52	10.65	2	2	2	3	3	
3	2.22	2.96	4.43	5.92	8.87	11.09	2	2	2	3	3	
4	2.32	3.1	4.65	6.2	9.3	11.62	2	2	3	3	3	
5	2.18	2.87	4.3	5.74	8.6	10.75	2	2	2	3	3	
6	2.18	2.91	4.36	5.82	8.72	10.9	2	2	2	4	4	
7	2.21	2.95	4.42	5.9	8.86	11.07	2	2	2	3	3	
8	2.06	2.75	4.13	5.5	8.21	10.26	2	2	2	4	4	
9	2.18	2.91	4.36	5.82	8.72	10.9	2	2	2	4	4	

SOCAL TYPEFACE

	number width						quantity of pre-drilled stud holes					
	3"	4"	6"	8"	12"	15"	4"	6"	8"	12"	15"	
0	3	4	6	8	12	15	2	2	2	4	4	
1	0.5	0.67	1	1.33	2	2.5	2	2	2	3	3	
2	1.59	2.12	3.18	4.24	6.36	7.95	2	2	2	3	4	
3	1.54	2.06	3.09	4.12	6.17	7.72	2	2	2	3	3	
4	1.52	2.02	3.04	4.05	6.07	7.59	2	2	2	3	3	
5	1.48	1.97	2.96	3.94	5.91	7.39	2	2	2	3	3	
6	2.25	3	4.52	6	9.02	11.27	2	2	2	4	4	
7	1.18	1.57	2.36	3.15	4.72	5.9	2	2	2	3	3	
8	2.06	2.75	4.12	5.5	8.25	10.31	2	2	2	3	4	
9	2.25	3	4.52	6	9.02	11.27	2	2	2	4	4	

BACKBAY TYPEFACE

	number width						quantity of pre-drilled stud holes					
	3"	4"	6"	8"	12"	15"	4"	6"	8"	12"	15"	
0	1.16	1.55	2.32	3.09	4.64	5.8	2	2	2	4	4	
1	0.71	0.94	1.41	1.88	2.82	3.52	2	2	2	3	3	
2	1.17	1.56	2.34	3.12	4.67	5.84	2	2	2	3	3	
3	1.17	1.56	2.34	3.12	4.67	5.84	2	2	2	3	3	
4	1.32	1.76	2.65	3.53	5.29	6.62	2	2	2	3	3	
5	1.16	1.55	2.32	3.09	4.64	5.8	2	2	2	3	3	
6	1.16	1.55	2.32	3.09	4.64	5.8	2	2	2	3	3	
7	1.21	1.62	2.44	3.25	4.87	6.09	2	2	2	3	3	
8	1.16	1.55	2.32	3.09	4.64	5.8	2	2	2	3	3	
9	1.16	1.55	2.32	3.09	4.64	5.8	2	2	2	3	3	

SOHO TYPEFACE

	number width						quantity of pre-drilled stud holes					
	3"	4"	6"	8"	12"	15"	4"	6"	8"	12"	15"	
0	1.94	2.58	3.87	5.16	7.74	9.68	2	2	2	4	4	
1	1.56	1.54	2.31	3.08	4.62	5.78	2	2	2	3	3	
2	1.92	2.56	3.84	5.13	7.69	9.61	2	2	2	3	5	
3	1.93	2.57	3.85	5.14	7.71	9.64	2	2	2	4	4	
4	2.05	2.74	4.11	5.48	8.22	10.27	2	2	2	3	3	
5	1.97	2.63	3.94	5.25	7.88	9.85	2	2	2	4	3	
6	1.88	2.51	3.77	5.01	7.52	9.4	2	2	2	4	4	
7	1.91	2.54	3.82	5.09	7.63	9.54	2	2	2	3	3	
8	1.82	2.53	3.63	4.85	7.28	9.1	2	2	2	3	4	
9	1.84	2.46	3.69	4.91	7.37	9.22	2	2	2	4	4	

SANTA BARBARA TYPEFACE

	number width						quantity of pre-drilled stud holes					
	3"	4"	6"	8"	12"	15"	4"	6"	8"	12"	15"	
0	2.84	3.79	5.67	7.6	11.4	14.25	2	2	2	4	4	
1	1.02	1.37	2.05	2.73	4.1	5.12	2	2	2	3	3	
2	2.5	3.34	5	6.67	10.01	12.51	3	3	3	4	6	
3	2.65	3.7	5.31	7.08	10.61	13.27	3	3	3	4	4	
4	2.82	3.76	5.65	7.54	11.31	14.14	2	2	2	3	5	
5	2.7	3.6	5.41	6.74	10.82	13.52	3	3	3	4	4	
6	2.69	3.58	5.37	7.16	10.74	13.42	2	2	3	4	6	
7	2.67	3.56	5.36	7.15	10.73	13.36	2	3	3	4	5	
8	2.69	3.58	5.36	7.2	10.72	13.40	3	3	3	4	6	
9	2.69	3.58	5.36	7.15	10.73	13.41	2	2	3	4	6	

SOUTH BEACH TYPEFACE

	number width						quantity of pre-drilled stud holes					
	3"	4"	6"	8"	12"	15"	4"	6"	8"	12"	15"	
0	2.75	3.66	5.49	7.32	10.99	13.73	2	2	2	4	4	
1	0.5	0.67	1	1.33	2	2.5	2	2	2	3	3	
2	2.46	3.28	4.91	6.55	9.83	12.29	2	2	2	4	4	
3	2.3	3.08	4.61	6.15	9.23	11.54	2	2	2	4	4	
4	2.79	3.72	5.58	7.44	11.17	13.96	3	3	3	3	4	
5	2.51	3.35	5.02	6.69	10.04	12.54	2	2	2	4	5	
6	2.55	3.4	5.11	6.81	10.22	12.77	2	2	2	4	4	
7	2.54	3.38	5.08	6.77	10.15	12.69	2	2	2	4	4	
8	2.74	3.64	5.48	7.3	10.95	13.69	2	2	2	4	4	
9	2.59	3.45	5.17	6.9	10.35	12.93	2	2	2	4	4	

PLAQUES

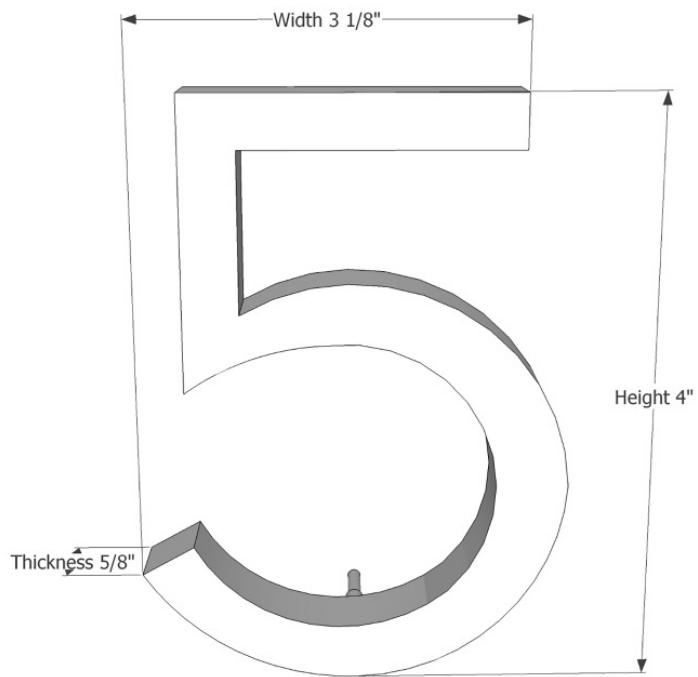
**available sizes**

7"	diameter circle
10"	diameter circle
8"x8"	square
6"x15"	rectangle

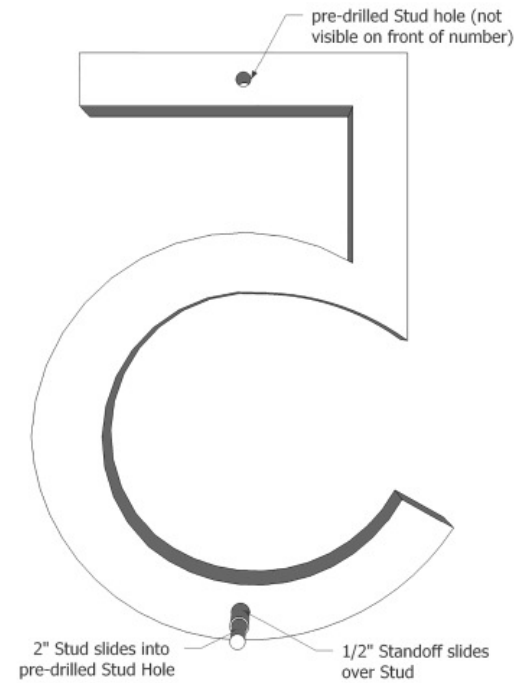
**quantity of pre-drilled stud holes**

7" diameter circle	4
10" diameter circle	4
8"x8" square	4
6"x15" rectangle	6

TYPICAL 4" ALUMINUM HOUSE NUMBER

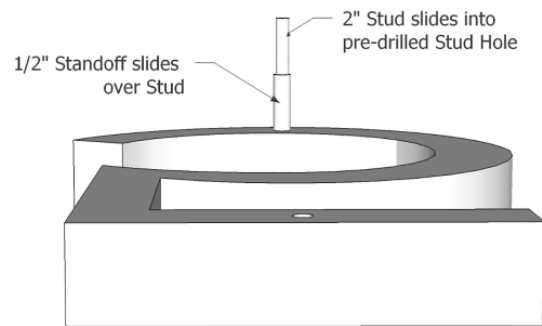


FRONT VIEW

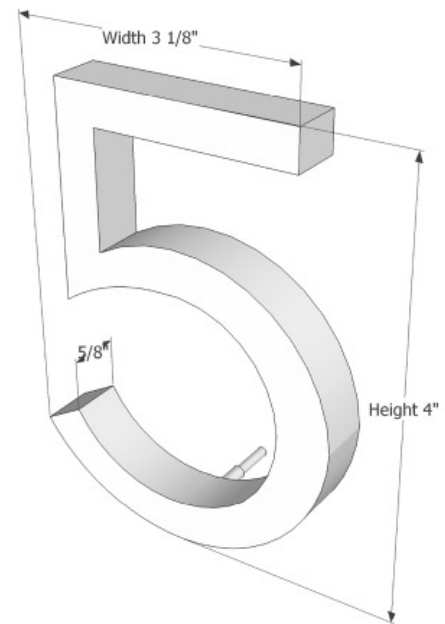


BACK VIEW

TYPICAL 4" ALUMINUM HOUSE NUMBER



TOP VIEW



PERSPECTIVE VIEW



INSTALLATION TIPS: ALUMINUM AND POWDER COATED HOUSE NUMBERS, LETTERS AND SYMBOLS AND PLAQUES

STEP 1

Gather supplies - house numbers, template, studs, spacers, (tape, adhesive, hammer, rubber mallet, drill and drill bit - not provided)



STEP 4

Push stud into hole on the back of the number. Light tapping with a hammer may be required, be careful not to scratch the face of the number

STEP 2

Tape template at desired location, use level to align template. Drill holes according to template - use 11/64" drill bit (3/16" for masonry or rock)



STEP 5

Slide spacer over stud and apply epoxy to the end of the stud.

STEP 3

Epoxy one end of the stud.



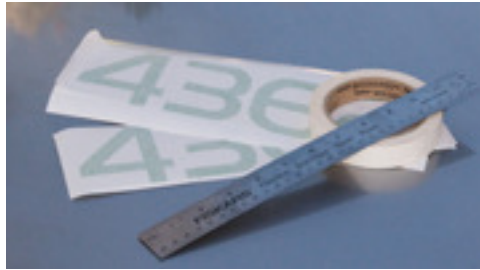
STEP 6

Push number into holes, light tapping with a rubber mallet may be required.

INSTALLATION TIPS: MAILBOX NUMBERS

STEP 1

Gather supplies - mailbox numbers, (tape, and ruler - not provided)



STEP 3

Peel off the number backing and align with tape, press numbers firmly onto mailbox

STEP 2

Clean off the mailbox surface, measure the desired number location, and place a piece of tape to align the bottom of the numbers



STEP 4

Remove the front transfer film and tape

INSTALLATION TIPS: CURB NUMBERS

STEP 1

Gather supplies - curb stencil, (spray paint, paper roll, and masking tape - not provided)



STEP 2

Clean concrete surface of loose debris and press stencil firmly onto concrete at desired location. Remove front transfer film and tape edges.



STEP 3

Paint stencil (be careful not to overspray)



STEP 4

Allow paint to dry and remove stencil

## LEED™ FACT SHEET: ALUMINUM



### LEED™ Fact Sheet Aluminum Sheet & Plate for the Building & Construction Market

(LEED™ is Leadership in Energy & Environmental Design. The LEED Green Building Rating System™, as promulgated by the U.S. Green Building Council, aims to improve occupant well-being, environmental performance and economic returns of buildings using established and innovative practices, standards and technologies.)

#### RECYCLED CONTENT

A survey of aluminum producers in mid-2008 indicated that the total recycled content of domestically produced, flat rolled products for the Building and Construction market was approximately 85%. The survey of the producers also indicated that on average ~60% of the total product content is from post-consumer sources. While these numbers represent the industry average, higher post-consumer and total recycled content material may be available from individual producers. For information on the LEED™ program and to find out how you can earn credit for the recycled content of your aluminum products go to: [http://www.usgbc.org/leed/leed\\_main.asp](http://www.usgbc.org/leed/leed_main.asp).

#### RECYCLABILITY

Not only does the aluminum used in the building and construction industry contain a high percentage of both post-consumer and post-industrial recycled content, at the end of its long, useful life in your building application it is **100% recyclable**. Aluminum building components can be repeatedly recycled back into similar products with no loss of quality, and aluminum in its various forms provides the most valuable component for most municipal recycling efforts.

To produce **aluminum from recycled material requires only ~5% of the energy** required to produce aluminum from bauxite ore, and every ton of recycled aluminum saves 4 tons of bauxite. Additionally, using recycled aluminum instead of raw materials reduces air pollution generation such as CO<sub>2</sub>, SO<sub>x</sub>, and NO<sub>x</sub> by 95% and water pollution by 97%.

For additional information on aluminum products for the building and construction industry, please contact your local supplier.