

# Raspberry PI 2.8 TFT Add-on

## Overview

Raspberry PI 2.8 TFT Add-on is customized for Raspberry Pi based on 2.8 TFT LCD display module. The screen is driven based on an 8-bit data bus and a 4-bit ILI9323DS to control bus interface, which can display 263K colors. Module controls contents to be displayed via GPIO on Raspberry Pi. With touch function, it can be used to display the desktop of Raspberry Pi and realize clicking, touch and feedback.

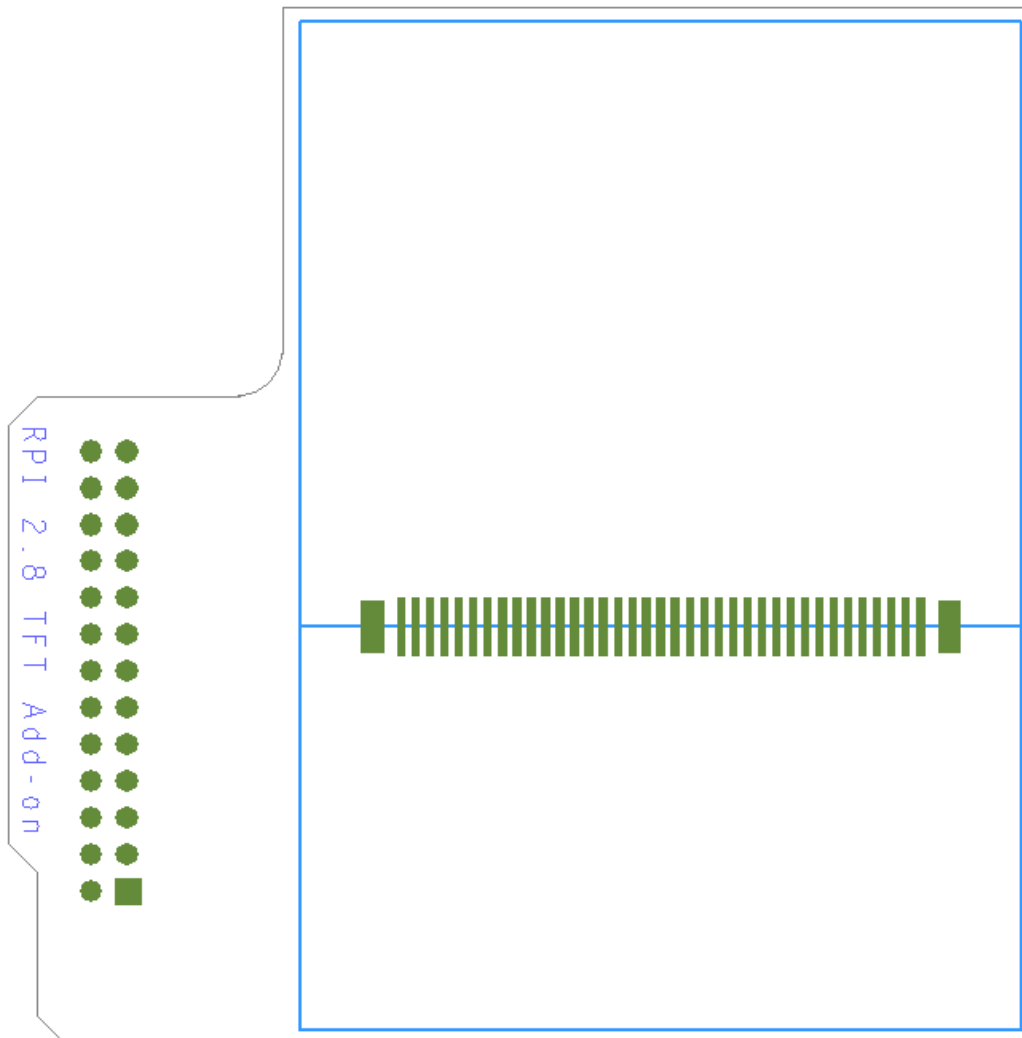
## Specifications

PCB size	72.0mm X 71mm X 1.6mm
Input voltage	3.3V
Screen size	2.8"
Resolution	240x320
Backlight	LED
Color	262K
Driver chip	ILI9325DS

## Electrical characteristics

Parameter	Min.	Typical	Max.	Unit
Supply voltage	-	3.3	3.6	VDC
Current consumed (average)	-	20	40	mA
Input voltage VinH	3	3.3	3.6	V
Input voltage VinL	-0.3	0	0.5	V
Output voltage VoutH	3	3.3	3.6	V
Output voltage VoutL	-0.3	0	0.5	V

# Hardware



## Pinmap

Raspberry PI interfaces

Raspberry PI Pin N.O.	Pin name	Pin of 2.8 TFT
11	GPIO0	DB10
12	GPIO1	DB11
13	GPIO2	DB12
15	GPIO3	DB13
16	GPIO4	DB14
18	GPIO5	DB15
22	GPIO6	DB16
7	GPIO7	DB17
3	SDA0	RS



5	SCL0	WR
24	CE0	CS
26	CE1	RST
19	MOSI	TOUCH_CLK
21	MISO	TOUCH_CS
23	SCLK	TOUCH_DIN
8	TXD	TOUCH_DOUT
10	RXD	TOUCH_IRQ
2	+5V	-
1	+3.3V	3.3V
6	GND	GND

## Revision record

Version	Description	Written by	Date
v1.0	Initial Edition	Stan Lee	15 <sup>th</sup> , Jan., 2014