



Drilling template for hinges



Symbol image

- Template for drilling the side fixing positions for hinges (Ø 8 and/or Ø 2.5 mm)
- Template for pre-drilling the fixing positions for the horizontal and cruciform mounting plates
- Template for pre-drilling the fixing positions for adapter plates (BLUMOTION/TIP-ON for doors)
- Assembly on a marking line
- Material: nylon/steel

Web-Link

assemblydevices.blum.com

Assembly possibilities

AVENTOS HF
CLIP top BLUMOTION/CLIP top
MODUL

Order information

Drilling template for hinges (Ø 8/Ø 2.5 mm)	Part no. 65.059A	Drilling template for hinges (Ø 2.5 mm)	Part no. 65.055A
---	----------------------------	---	----------------------------

Composed of:

Drilling template for hinges	1 x
Reducing bush Ø 8 to Ø 2.5 mm	1 x
Drilling depth stop Ø 8 mm	1 x

Composed of:

Drilling template for hinges	1 x
------------------------------	-----

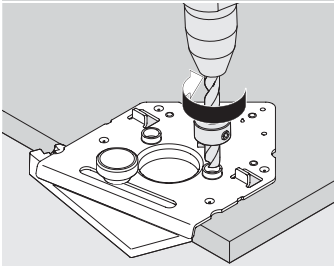
Page instructions

Overview – templates, jigs and assembly devices

609

Assembly possibilities

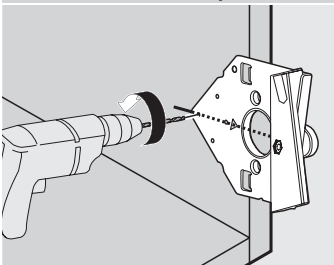
AVENTOS HF/CLIP top BLUMOTION/CLIP top/MODUL



Hinge system assembly – Door

- Perform boss drilling (Ø 35 mm) e.g. using a pillar drill
- Position template and fix with a spacer
- Drill side holes for hinges

AVENTOS HF/CLIP top BLUMOTION/CLIP top/MODUL



Hinge system assembly – Cabinet

- Mark hinge arm centre
- Attach template and pre-drill fixing positions for inline (20 mm) or cruciform mounting plates (37 mm)