

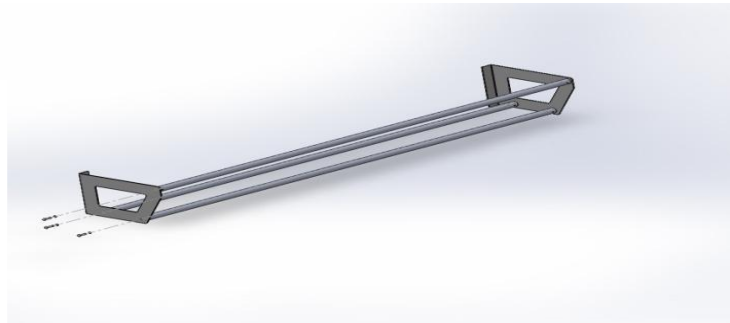
KartWorkz

Parts List

- (1) Tire Rack End Plate Left
- (1) Tire Rack End Plate Right
- (3) Tire Tube (s)
- (6) 1/4-20 x 1 BHSCS, Plated
- (6) 1/4" Split Washer, Plated
- (4) Mounting Screws

Assembly Instructions

1. Locate Tire Rack End Plate, align tire rack tube with hole in Plate and
2. Thread 1/4-20 x 1" BHSCS with split washer into tube.
3. Repeat procedure for remaining tubes



Note: Tire Rack loads can get heavy from time to time, Due to the Over the Road Vibrations and flex inherent to trailers It is Strongly Recommended that Installation of the mounting plates are affixed to the Trailers Wall Studs.

Overall Tire Rack Dimensions are different than tire rack size ordered. Tire rack size denotes spacing between end plate Hole Pattern

Mounting Instruction

1. With Tire Rack Assembled, Determine location for Tire rack mounting within trailer, ensure trailer studs are available.
2. Transfer the Mounting Hole Locations to the Wall Board using a pencil, ensuring tire rack is level.
3. Position Tire Rack and screw in self drilling mounting screws to affix end plate.