



# Gardens & Drives

[www.brett paving.co.uk](http://www.brett paving.co.uk)

Get exactly the  
look you want...  
with a Brett Approved Installer

INSPIRATIONAL LANDSCAPING PRODUCTS FOR YOU AND YOUR HOME



# The Art of Fine Landscaping

Style and exclusivity is simple to achieve with the latest ranges of Brett paving, aggregates and accessories.

Welcome to the new Brett 'Gardens and Drives' brochure, which is packed with inspirational ideas and practical information. We hope this will help you create the beautiful outdoor space you want... as we have done for thousands of other customers over many years.

If you need anything that is not covered in this brochure, please visit:  
[www.brettpaving.co.uk](http://www.brettpaving.co.uk)

## New additions for this year

**Natural Stone Collections -**  
See the new range of beautiful natural stone flag paving chosen to suit almost any design and every pocket - see pages 16-31

**Stamford Paving -**  
The gently riven surface of Stamford flag paving provides an attractive finish for your patio at a price you'll appreciate - see page 36

**Alpha TRIO -**  
Quality tumbled block paving offering three plan sizes per pack - see page 68-69



# Gardens & Drives

## Natural Stone

- 16 **Elite Stone**  
Textured, Polished and Tumbled Sandstones, Granite
- 22 **Style Stone**  
Limestone, Sandstone, Slate, Quartz
- 28 **Creative Stone**  
Sandstone
- 30 **Smart Stone**  
Limestone, Sandstone

## Garden features

- 6 **3 Easy Steps**  
Creating your garden or drive couldn't be easier with a little bit of planning. Use these easy to follow steps
- 21 **Large Patio of the Year**  
See how Elite Tumbled Sandstone is used to its full potential to win this prestigious award
- 27 **Transformations**  
Be inspired by the potential to transform your outdoor space into something special that fits your vision
- 23 **Small Patio of the Year**  
A new patio but with an authentically traditional look blends perfectly with the period setting

## Garden Paving

- 34 **Moderno**  
Single Size Paving Packs
- 36 **Westminster**  
Patio Packs, Stepping Stones, Millstones, Walling, Circle and Corner Kit
- 38 **Bronte**  
Single Size Paving Packs, Patio Pack, Stepping Stones, Circles and Corner Kit
- 40 **Olde English Brick**  
Single Size Paving Packs
- 41 **Canterbury**  
Patio Pack and Single Size Paving Packs
- 42 **Textitone ECO**  
Single Size Paving Packs
- 43 **Chaucer**  
Single Size Paving Packs
- 46 **Economy Paving**  
Stamford, Quorndon and Broadway

## Finishing Touches

- 44 **Garden Walls and Edging**  
A beautiful selection of Garden Walling to complement our paving ranges. Choose from an array of different styles and colours to finish your garden around the edges
- 48 **Gravel, Chippings, Pebbles and Cobbles**  
Add a splash of colour and texture to your garden with these beautiful natural aggregates
- 50 **The finished article**  
Work by various BAIs, including 'Portfolio of the Year' really shows you what can be done to bring any garden to life

### Back cover picture

Winner of the BAI Contractor's Choice Award see page 62

## Drives

- 54 **Aura**  
Paving, Circles and Kerbs
- 56 **Alpha Antique**  
Paving, Circles and Kerbs
- 60 **Classico**  
Paving and Circles
- 64 **Regatta**  
Paving and Circles
- 66 **Beta**  
Paving and Circles
- 68 **TRIO**  
Alpha and Regatta TRIO
- 70 **Omega**  
Paving
- 73 **Alpha Flow and Omega Flow**  
Permeable Paving solutions

## Finishing Touches

- 72 **Driveway Gravels and Stone Chippings**  
Aggregates are a great way to break up paved areas
- 74 **Kerbs and Edgings**  
Choose from a range of complementary Kerbs and Edgings to help finish your garden or drive around the edges

## Driveway features

- 58 **Large Driveway of the Year**  
Brett rewards the best driveway jobs from their Approved Installer members, here's the winner and others from the 2013 awards
- 59 **How to transform your driveway**  
Make your drive more than somewhere to park: make it a beautiful integrated landscape feature.
- 60 **Fleur-de-Lys patterns**  
Let creativity blossom with these beautiful, organically curved patterns
- 71 **Being responsible with water**  
Advice on using permeable paving in you project to help manage run off and flood risk
- 75 **Small Driveway of the Year**  
Beautiful things often come in small packages and this immaculate driveway with excellent step details is no exception

## Product information

- 78 **Garden Paving**
- 80 **Patio Packs**
- 82 **Circle Features**
- 83 **Walling**
- 84 **Accessories**
- 85 **Drives**
- 88 **Kerbs and Edgings**

## Installation

### DIY Guides

- 92 **How to Lay a Patio**
- 94 **How to Lay Block Paving**

## Sustainable and Responsible

- 96 **Sustainable Products**
- 97 **Responsible Product Sourcing**
- 98 **Brett and the Community**
- 99 **Additional information**

## Contact us

Tel 0845 60 80 570  
Web [www.brettpaving.co.uk](http://www.brettpaving.co.uk)  
Email [landscaping@brett.co.uk](mailto:landscaping@brett.co.uk)



# 1 Choose YOUR LOOK

This brochure is designed to help you get the most from your garden and to create a space that looks and functions in exactly the way you want it to.

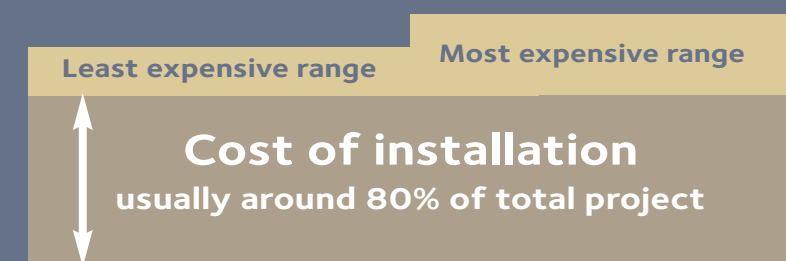
You may already be thinking about colours, styles and textures, or you may have a completely open mind. Either way, there's plenty of information and advice available from this brochure, garden shows, lifestyle magazines or just browsing the web for ideas.

Being advised and informed is just as crucial as inspiration. Costs, timing, use of materials and other practical considerations will have a big part to play in your decisions - but you don't have to make them alone!

There's a great deal of practical advice in this brochure, but there's even more in the heads of your local builders merchant and installers and there's no better expert than a Brett Approved Installer (BAI).

You'll find out more about these people as you browse through this brochure – or by visiting [www.brettpaving.co.uk](http://www.brettpaving.co.uk)

# 2 Set your BUDGET



Did you know that installation costs typically account for 80% of the landscaping budget?

It therefore pays to stick to what you really want, as using a premium product will only marginally increase your total project outlay.

So, getting the perfect look and feel won't cost you much more – but will keep a smile on your face for longer!

While you're looking at your costs, don't forget that by enhancing your outdoor areas you will also be adding additional living space as well as extra long-term value to your home.





# 3 Installation

## DIY or Brett Approved Installer

If you know what you're doing, have the time and are keen to go it alone, there's a wealth of installation information available on pages 94-99.

There's still more at [www.brettpaving.co.uk](http://www.brettpaving.co.uk)

If you do go down the DIY route don't forget to allow for extras like fencing, plants, furniture or any other unexpected costs within your project.

The other approach is to find an installer you are comfortable with and who understands what you want. Then agree a fixed budget with them for the work you want doing.

This simple step lets your installer know exactly what they are doing and ensures there are no unpleasant surprises for either of you – allowing you to relax and enjoy watching your project taking shape.



**Design Advice Services**  
Many Brett Approved Installers provide design help as part of their service and are able to advise on every aspect of your project.

## Introducing Brett Approved Installers

The Brett Approved Installer scheme is a network of installers whose workmanship is rigorously assessed and monitored by Brett both in terms of their financial probity, the absolute quality of their workmanship and peerless customer service.

The Brett Approved Installer team aim is to offer you the 'best of the best' paving contractors in the market who can install your Brett Driveway or Patio to the highest standards, and ultimately significantly reduce the risk of you choosing a rogue paving contractor.

All Brett Approved Installers have access to the latest technical and support services offered by Brett and so can easily help with product choice, design, logistics, British Standard queries and all other aspects of your project.

### TOP TIP

Whatever you decide to do, start looking early: Brett Approved Installers are often booked for months in advance.



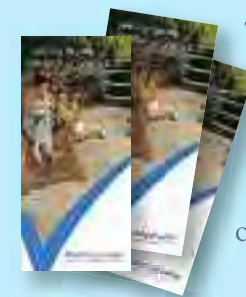
**BrettApproved**  
PAVING EXPERTS YOU CAN TRUST

## Benefits of selecting a Brett Approved Installer

The Brett Approved Installers scheme is designed to provide you with that extra peace of mind at all stages of your landscaping contract.

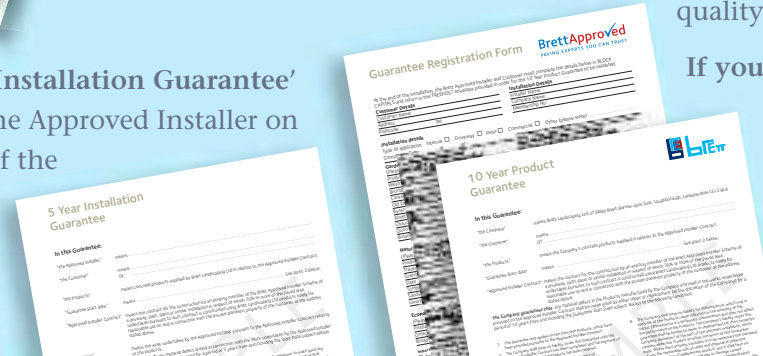
Firstly, you can make an instant website check to ensure your Approved Installer is who he says he is: [www.brettpaving.co.uk](http://www.brettpaving.co.uk)

Thereafter, your Approved Installer can provide:



The 'Setting Paving Installation Standards' document. It's a great explainer that tells you how to measure the quality of a paving contractor when he comes to quote for your project.

A 'Five Year Installation Guarantee' direct from the Approved Installer on completion of the installation.



A 'Guarantee Registration Form', completed with your Approved Installer, that verifies the product installed, that you're happy with the installation and then triggers a 'Ten Year Product Guarantee' for our Concrete and Premium (Elite and Style ranges only) Natural Stone products direct from Brett Landscaping.



An 'Essential Maintenance Guide' that provides you tips on how to best look after your new installation.

Finally a 'Customer Service Questionnaire' - a vital part of the scheme because it allows us to get your direct feedback on our Approved Installer members and helps to maintain our members' high quality standards.

If you're not going to undertake your job yourself, why would you not choose a Brett Approved Installer with all this available to you?

## How do I find my Brett Approved Installer

Brett Approved Installers advertise in many different ways and areas including stands at County and National Shows as well as in the local press and national directories. You can always find your closest Brett Approved Installer or check that your contractor really is a Brett Approved Installer at [www.brettpaving.co.uk](http://www.brettpaving.co.uk)



Approved Installer at the 'Goodwood Need for Speed Festival'





# Brett Approved Installer Awards 2013

The Brett Approved Installer Awards are an annual event, primarily aimed to maintain standards, drive improvement and reward the quality of workmanship in the scheme members' installations. Something that everyone benefits from!

As normal, 2013 saw an incredibly high standard of entries completed for satisfied customers, all for our panel of industry independent judges to pick from - no easy task.

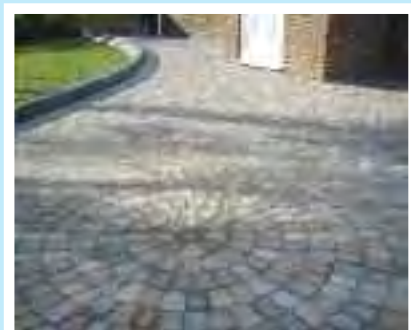


## BAI Projects 2013

Here's a small selection of the quality of projects that **didn't** quite win a top spot. We've included these to demonstrate the depth of quality we have throughout our Approved Installer Scheme. Some of the winners' projects and new awards can be found throughout the rest of this year's brochure.



Alpha Antique Brindle and Silver Haze



Beta Burnt Oak



Alpha Antique Silver Haze



We couldn't leave this page without congratulating our 2013 BAI Installer of the Year, John McGinlay of Paramount Paving, who won the 'Bragging Rights' for the coming 12 months in the fabulous surroundings of The Belfry in the West Midlands. 4 Seasons Paving & Arun Driveways both took their regions' awards.



# Natural Stone

Specially selected natural stone to enrich your outdoor space with warmth, class and quality. From cost effective, simple but beautiful ranges to the pristine purity and elegance of polished products.

For information  
on ethical trading,  
see page 97





## Elite Stone

Beautiful Sandstone, Quartzite and Granite paving in a variety of textured, polished and tumbled finishes to create the perfect patio  
See pages 16-20

Elite Polished Sandstone Fossil Mint

## Style Stone

Classic Limestone, Sandstone, Slate and Quartzite paving in a variety of durable surface finishes enhancing any outdoor space  
Pages 22-26

## Creative Stone

A popular range of calibrated Sandstone paving in a range of four natural colours to suit most gardens  
See pages 28-29

Creative Sandstone Modak

## Smart Stone

A range of Limestone and Sandstone paving to create a durable natural stone patio for your home  
See pages 30-31

Smart Limestone Ocean Spray

Style Limestone Honey



## Elite Textured Stone

Additional processing to the stone helps create gently textured surfaces for amazing aesthetics in this premium range of natural stone products.

The Elite Textured Stone selection from Brett Landscaping incorporates Sandstone and Quartzite within the range to give you a unique palette to personalise your outdoor space.

- ✓ Mixed sized paving patio pack
- ✓ Circle

See pages 78 to 80 for product information



Rustic Pearl



Midnight Storm



Moorland York



Elite Textured Stone Midnight Storm



Elite Textured Stone Moorland York



Elite Textured Stone Rustic Pearl



## Elite Polished Sandstone

Elite Polished Sandstone makes a majestic entrance to any garden with the smooth, sleek edge finish adding a touch of class and perfection to this range of premium sandstone paving.

- ✓ Mixed size paving patio pack
- ✓ Planks

See picture opposite and pages 82 and 83 for product information



Elite Polished Sandstone Mountain Mist



Fossil Mint



Modak



Mountain Mist



Elite Polished Sandstone Fossil Mint

## Elite Flamed Granite

With its neat edges and consistent grey tones, this premium Granite paving option delivers a refined look with the flamed finish giving a subtly rippled surface.

- ✓ Mixed size paving patio pack
- ✓ Single size Setts

See pages 82 and 83 for product information



Elite Granite Silver Grey



Graphite Grey



Silver Grey



Elite Granite Graphite Grey

Lightly textured surfaces in cool contemporary colours



Elite Tumbled Sandstone Circle Forest Glen



## Elite Tumbled Sandstone

The Elite Tumbled Sandstone paving range delivers an instant aged feel to add warmth to your garden. Create more interest to your design with matching Circles and Setts to provide the perfect entertaining space.

- ✓ Mixed size paving patio pack
- ✓ Mixed size Setts
- ✓ Circle with Corners

See pages 82 and 83 for product information



Forest Glen



Modak



Twilight



Elite Tumbled Sandstone Forest Glen

## Elite Tumbled Sandstone wins LARGE PATIO OF THE YEAR 2013



Winner Large Patio:  
Fulford & Mole

Elite Tumbled Sandstone was used to its full potential on the project that won Fulford & Mole the 'Large Patio of the Year' prize in 2013. The judges picked out the sympathetically tiered layout, the fabulous gentle curve on the radial steps and the subtle use of decorative aggregates with the natural stone to break up the large areas. Decorative lighting in a Patio can also make a massive difference.



Before - the challenge



Elite Tumbled Sandstone Forest Glen



## Style Slate

Carefully hand-selected at the quarry, Style Slate creates characterful riven surfaces. Available in modern Olive Black or Oyster Shell. Slate offers a rustic look with its naturally occurring tones.

- ✓ Mixed size paving patio pack
- ✓ Circle with Corners

See pages 78-80 for product information



Olive Black



Oyster Shell



Style Slate Oyster Shell

## Style Slate wins SMALL PATIO OF THE YEAR 2013



Winner Small Patio:  
Jake Brown

Jake Brown of Jake Brown Landscapes & Groundwork was the first winner of the new 'Small Patio of the Year' award with this delightful barn courtyard in Olive Black Style Slate. The judges picked this job out for the way its design and product choice enhance the property and how the different materials and textures have and all come together to make such a traditional look for a new patio.



Style Slate Olive Black



## Style Limestone

Limestone's elegance and warmth suits both traditional and contemporary settings.

Our Style Limestone is all cut to standard thicknesses for ease of installation whilst retaining its natural strength and durability.

- ✓ Mixed size paving patio pack
- ✓ Circle with Corners

See pages 78-80 for product information



Style Limestone Fern

## Style Sandstone

Every piece of hand crafted Indian Sandstone is unique. The palette of colour tones in this range will ensure your project's individuality. Our Style Sandstone paving is accurately sawn to an even thickness to enable quick and easy installation.

- ✓ Mixed size paving patio pack
- ✓ Circle with Corners

See pages 78-80 for product information



Style Sandstone Mountain Mist



Honey



Fern



Raveena



Mountain Mist



Style Limestone Honey



Style Sandstone Raveena



## Style Quartzite

The high quartz content of this natural stone creates a unique look for these two Quartzite stone pavers whilst the hardness of the stone ensures that its good looks will last for many years to come.

Midnight Storm comes with a smooth polished surface for sharp modern designs, whilst Burnt Glow has a gently riven surface for a more traditional finish.

- ✓ Mixed sized paving patio pack
- ✓ Planks

See picture opposite and pages 78-80 for product information



Midnight Storm (polished)



Burnt Glow (riven)



Style Quartzite Midnight Storm



Style Quartzite Burnt Glow

## Two patio transformations by BAIs in 2013



Before

Creative Sandstone Fossil Mint



Before

Creative Sandstone Fossil Mint



## Creative Sandstone

Every piece of hand crafted Indian Sandstone has its own unique character. Our calibrated Creative Sandstone paving is accurately sawn to an even thickness to enable quick and easy installation.

The wide selection of options in this range allows you to be as creative as you like, with single size packs, circles and patio packs all providing you with the maximum flexibility.

- ✓ Single size paving
- ✓ Mixed size paving patio pack
- ✓ Circle Kit including Corners

See picture opposite and pages 78-80 for product information



Creative Sandstone Fossil Mint



Forest Glen



Fossil Mint



Modak



Sunrise



Creative Sandstone Forest Glen



Creative Sandstone Sunrise



Creative Sandstone Modak



## Smart Limestone

Limestone's elegance and warmth suits both traditional and contemporary settings.

Our range of Smart Limestone is calibrated to standard thicknesses for ease of installation whilst retaining its natural strength and durability.

✓ Mixed size paving patio pack

See pages 78-80 for product information



Ocean Spray



Mystic Sky



Smart Limestone Ocean Spray

## Smart Sandstone

Create the traditional patio look with this range of hand split sandstone paving. An ideal way to make the most of your garden without breaking the bank.

✓ Mixed size paving patio pack

See pages 78-80 for product information



Forest Blend



Autumn Dawn



Smart Sandstone Forest Blend



Smart Limestone Mystic Sky



Smart Sandstone Autumn Dawn



# Garden Paving

Brett presents distinct, creative possibilities for patios, terraces and pathways around your home. Whatever your style, inspiration starts here.

34	<b>Moderno</b>
36	<b>Westminster</b>
38	<b>Bronte</b>
40	<b>Olde English Brick</b>
41	<b>Canterbury</b>
42	<b>Textitone ECO</b>
43	<b>Chaucer</b>
44	<b>Garden Walling and Edging</b>
46	<b>Stamford</b>
47	<b>Quorndon</b>
47	<b>Broadway Economy</b>



# Moderno

Clean, sharp lines made to the finest of tolerances give your garden a modern, contemporary look



Moderno Black and Grey (shown wet)

## Moderno

Made to the finest tolerances, Moderno exudes quality whilst looking chic. Mix up the colours to create stunning designs.

✓ Single size paving

See pages 78 and 79 for product information



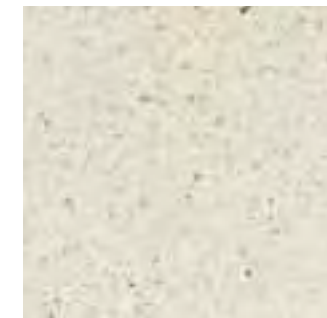
Moderno Black and Grey



Black



Grey



White

Elegant  
sophisticated  
**STYLE**



Moderno Black and Grey (shown wet)



# Westminster

The warm, authentic look of original London flagstones

## Westminster

Westminster provides a classic and authentic textured look. This superior paving is made using moulds taken from original London flagstones.

The Westminster garden collection features Paving, Circle, Walling and Copings to provide maximum design flexibility.

Its beauty is enhanced when combined with other paving such as Olde English Brick.

- ✓ Three mixed size paving patio packs
- ✓ Circle with optional Corner Kit
- ✓ Walling and Copings
- ✓ Stepping Stones
- ✓ Millstones

See 78 – 83 for product information



Millbank



Old Gold



Stepping Stone



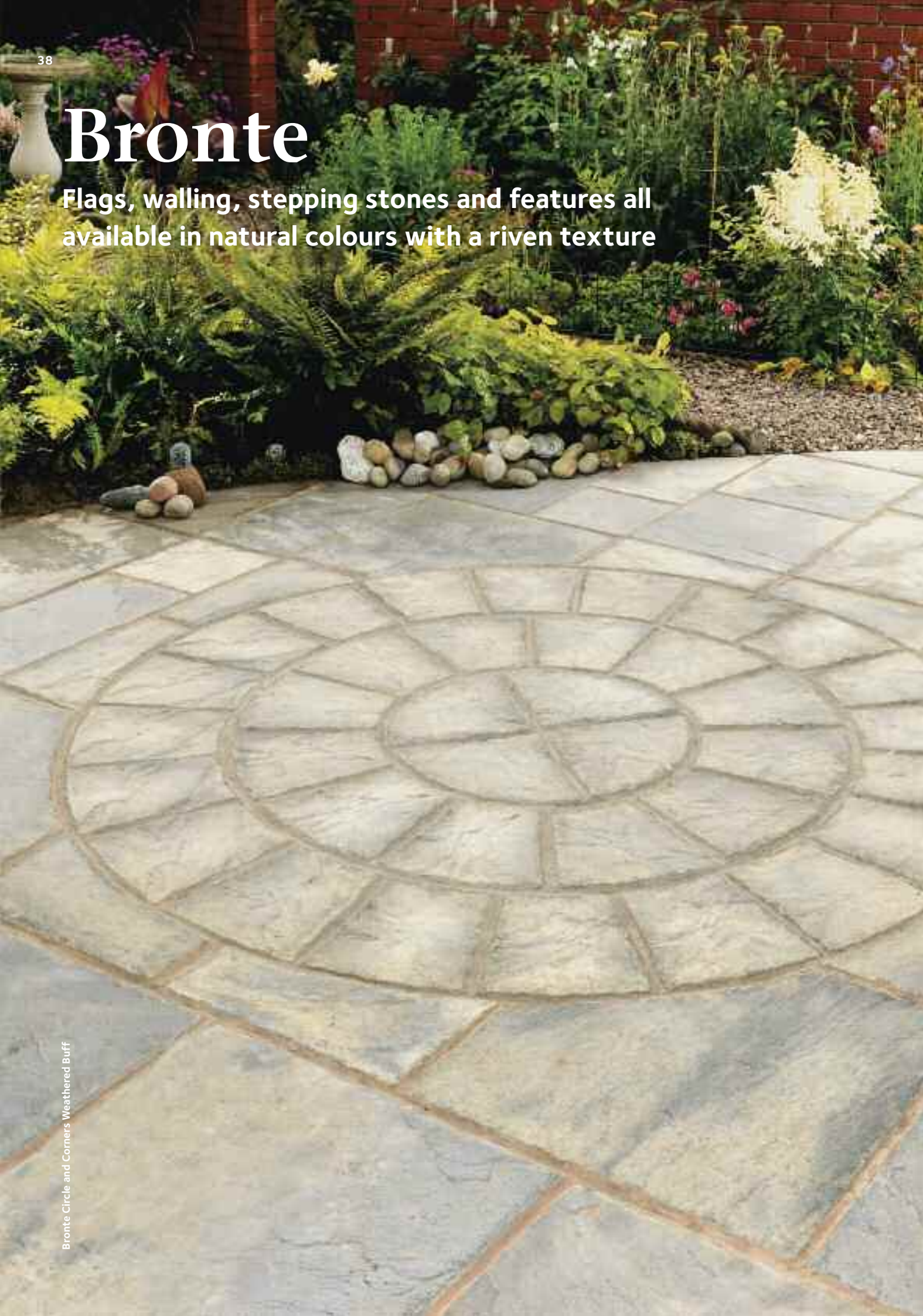
Millstone





# Bronte

Flags, walling, stepping stones and features all available in natural colours with a riven texture



Bronte Circle and Corners Weathered Buff

## Bronte

A riven surface with natural colour tones allows the Bronte range to blend well with most surroundings adding character and texture to your outdoor spaces.

- ✓ Single size paving
- ✓ Mixed size patio pack
- ✓ Full and Half Circles
- ✓ Circle Corner Kit
- ✓ Garden Walling
- ✓ Stepping Stones

See pages 78 - 83 for product information



Acorn Brown



Honey Brown



Weathered Apricot



Weathered Buff



Weathered Stone



Stepping Stone  
Available in all colours



Bronte Paving Weathered Buff



# Olde English Brick

**Faithfully reproducing the warmth and character of original brick paving**

Add instant character to your garden. Enduringly stylish, the irregular texture, uneven block surface and Burnt Red colour faithfully reproduces the appearance of original brick. An easy way to cover large areas without the problem of individual brick positioning.

- ✓ Basket Weave
- ✓ Soldier Course Edging
- ✓ Radius Edging

See pages 78-79 for product information



Basket Weave



Soldier Course Edging



Radius Edging

Inspired  
by Victorian courtyards

Olde English Brick Basket Weave Paving

# Canterbury

**Warm and natural, riven flag paving**

With its freshly quarried riven surface and dressed edges, this collection of sympathetic regional stone colours gives Canterbury a timeless appearance wherever you are.

- ✓ Mixed size patio pack
- ✓ Single size paving

See pages 78-79 for product information



Old Cotswold



Slate Grey



Mellow Amber



Canterbury Slate Grey



# Texitone ECO

**Glints of exposed natural Welsh Slate aggregate creates hardwearing beauty**

Texitone ECO contains a minimum of 65% recycled natural Welsh slate aggregate which creates a unique aesthetic to give added visual impact.

It also provides excellent non-slip and durability characteristics that will enhance any project.

If looking to create a sharper, more modern aesthetic, install Texitone ECO with narrow joints to create a different feel for your patio.

See pages 78–79 for product information

**Minimum 65%  
recycled content**



Natural



Charcoal



Texitone ECO Charcoal

# Chaucer

**A delicate texture that works well with narrow joints to give crisp, geometric lines**

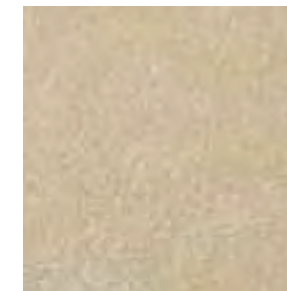


Chaucer Charcoal

## Chaucer

The finely textured surface of Chaucer paving provides an attractive and practical patio. For a fresh contemporary feel, lay Chaucer narrow jointed to achieve a more defined finish.

See pages 78–79 for product information



Buff



Charcoal



Natural

## Design tip

Consider breaking up your patio by mixing paving with gravels, slate or stone chippings to create textural and colour contrasts.





# Garden Walling and Edging

## Garden Walling and Copings

Quick and easy to build with a wide range of sizes to instantly provide a traditional stone wall effect. Garden Walling and Copings complement both our Canterbury and Bronte ranges.

See page 83 for product information



Garden Walling and Copings Weathered Apricot



Garden Walling Weathered Stone



Acorn Brown



Weathered Apricot



Honey Brown



Weathered Buff



Weathered Stone

## Garden Edging

Edging plays an essential part in your garden, performing a practical function of separating areas whilst neatly finishing flower beds.

Choose from the following Edgings:

- ✓ Patio Square
- ✓ Round Top
- ✓ Scallop
- ✓ Full Rope Top
- ✓ Flat Top
- ✓ Corner Posts

Other great edging options include Olde English Brick, Block Paving and Kerbs.

See page 84 for product information



Rope Top Edging and Corner Post Charcoal

### What edgings can do for you...

- ✓ Create boundaries between areas
- ✓ Prevent different materials from mixing
- ✓ Provide a clean edge
- ✓ Protect plants
- ✓ Add individuality to your design



Rope Top Edging Brindle



Scallop Edging Buff



Round Top Edging Buff



Patio Square Autumn Mix

Also consider using edgings to surround your drive

see page 84





# Economy Paving

This range of Brett garden paving products has been specifically developed to suit projects where larger areas or budgets are a concern. They all offer great durability but at a lower price point than our other flag paving products but still come with all the security of buying Brett products for your project.

## Stamford

Stamford is an economy wet-cast concrete paving flag which has a detailed riven surface ideal for creating patios, paths and utility areas around the home.

Stamford has been designed to offer exceptional value and comes in two colours which can then be mixed to create edges or delineation within paved areas.

Stamford has a sharp edge detail that looks great when laid with small joints which also maximises the speed and ease of installation for the DIY enthusiast.

See pages 78 and 89 for product information



Stamford Buff



Buff



Natural



Stamford Natural

# Quorndon

This hardwearing paving flag with its gently riven surface and colour variations is ideal for utility patio areas. Available in 4 sizes as well as both 38 and 50mm thicknesses Quorndon is also a firm favourite with housebuilders and developers.

Colours and face finishes may vary.

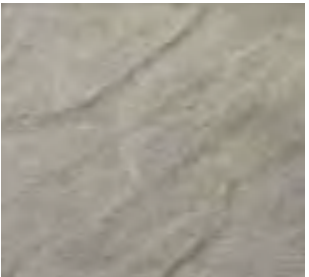
See pages 78 and 89 for product information



Quorndon Buff



Buff



Natural

# Broadway Economy

Available in both smooth and riven options, this functional, economical paving suits utility areas perfectly.

Colours and face finishes may vary.

See pages 78 and 89 for product information



Broadway Economy Buff Riven



Buff Riven



Buff Smooth



Natural Riven



Natural Smooth



Red Riven



Red Smooth



# Gravels, Chippings, Pebbles and Cobbles

Blue Slate



## Fish friendly!

Many of our gravels are suitable for use in garden ponds.  
Wash thoroughly first to remove small particles that may cloud the water.



Blue Slate  
Grade: 40



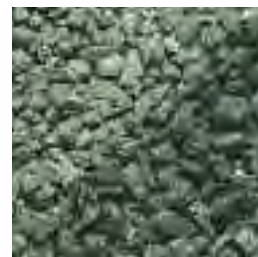
Plum Slate  
Grade: 40



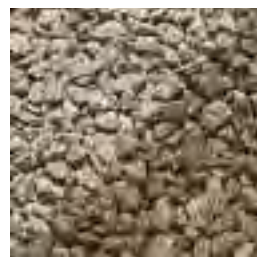
Green Slate  
Grade: 40



Red Granite  
Grade: 14



Green Granite  
Grade 14



Rose Grey Granite  
Grade: 14



Silver Grey Granite  
Grade: 14



Scottish Beach  
Pebbles/Cobbles  
Grades: 20-30, 50-80



Lydd Pebbles  
Grades: 20\*, 40  
\*only grade 20 is suitable for driveways

## Garden and Driveway Aggregates

All decorative aggregates are available in mini bags and bulk bags. For a handy aggregate usage calculator tool, visit [www.brettpaving.co.uk](http://www.brettpaving.co.uk) to see how many bags you require.



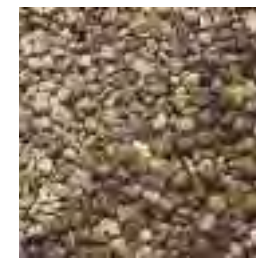
All photography shown is only indicative of aggregate colour. Samples should be requested for representative colour and size.

Product	Grade	Coverage kg/m <sup>2</sup>
Blue Slate	40	62.5
Plum Slate	40	62.5
Green Slate	40	62.5
Red Granite	14	75
Green Granite	14	75
Rose Grey Granite	14	75
Silver Grey Granite	14	75
Scottish Beach Pebbles	20-30	20
Scottish Beach Cobbles	50-80	45

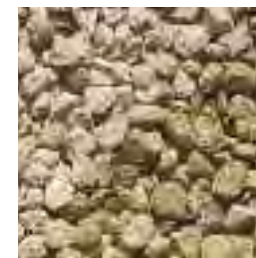
Product	Grade	Coverage kg/m <sup>2</sup>
Lydd Pebbles	20	75
Lydd Pebbles	40	45
Natural Rounded Gravel	10	75
Cotswold	20	75
Golden Gravel	10	70
Golden Gravel	20	70
Durite Canterbury Spar	11	60
Staffordshire Pink	20	70
White Marble	14	70

All quoted figures are approximate

A range of attractive aggregates that provide easy options for driveways, patios, paths or even border decoration.



Natural Rounded  
Gravel Grade: 10



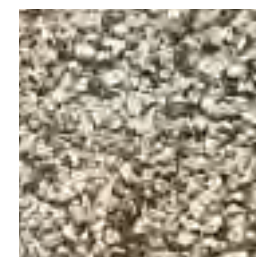
Cotswold  
Grade: 20



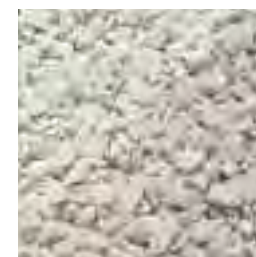
Golden Gravel  
Grades: 10, 20



Staffordshire Pink  
Grade: 20



Durite Canterbury  
Spar® Grade: 11



White Marble  
Grade: 14



Pictures show dry top left and wet bottom right

Suitable for driveways

The most widely used aggregates are illustrated here. Please enquire if you require products not shown.

## Key considerations

- Where are your aggregates going to be used - driveway, garden, external settings or for internal displays?
- Is the area to be trafficked or not?
- What style of landscaping is required - subtle or striking?
- What grade of aggregate is the most suitable for your application?
- What size of area is to be covered?
- Is a weed suppressant membrane required beneath the aggregates if externally used?



Green Slate



Lydd Pebbles and Scottish Beach Cobbles

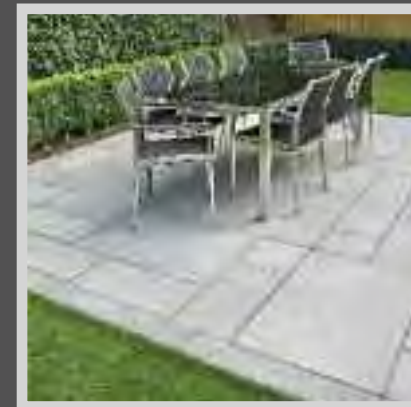
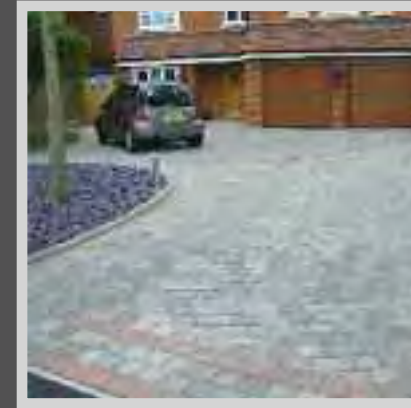


# BAI PORTFOLIO OF THE YEAR 2013

Here is the winner of the BAI Portfolio of the Year 2013. Looking at the calibre of all the projects which went into this portfolio it can be seen why this installer won this coveted award this year. It's yet more evidence of the extremely high levels of service, expertise and finished project quality that BAI members are uniquely able to bring to your projects.



*The winner of the 2013 BAI Portfolio of the Year was John McGinlay of Paramount Paving, who also won the '2013 BAI Installer of the Year'. He collected his award in the fabulous surroundings of The Belfry in the West Midlands. Our congratulations go to John on his success.*





# Drives

A well-designed, attractive driveway provides easy, convenient and secure parking, as well as adding value to your home.

54	<b>Aura</b>
56	<b>Alpha Antique</b>
60	<b>Classico</b>
64	<b>Regatta</b>
66	<b>Beta</b>
68	<b>Alpha TRIO</b>
68	<b>Regatta TRIO</b>
70	<b>Omega</b>
71	<b>Being responsible with water</b>
72	<b>Gravels and Stone Chippings</b>
73	<b>Alpha Flow and Omega Flow</b>
74	<b>Kerbs and Edgings</b>



# Aura

The perfect courtyard cobble with a tumbled, riven surface and a delicate sparkle



Aura Silver Fleck

## Aura

Tumbled cobbles with a riven surface and delicate shimmer that make a great alternative to granite setts. Create stunning curves using the Circle Kit or Large Circle stones.

- ✓ Paving
- ✓ Circles
- ✓ Kerbs

See pages 83, 86 and 87 for product information



Aura Circle mixed colours



Bronze Fleck



Burnt Fleck



Silver Fleck

Note:  
Always use permeable  
chippings for jointing  
Aura paving before  
applying kiln dried sand.



Aura Silver Fleck



# Alpha Antique

Warm, rustic tones that blend with any surrounding



Find out on page 58 how TS McLaughlin won the Large Driveway of the Year award in 2013

Alpha Antique Brindle

## Alpha Antique

With a distressed aged look that blends well with most surroundings, it isn't surprising that Alpha Antique is one of the most popular choices. The yellow and orange tones evoke a warm rustic ambience, ideal for period properties. For more contemporary homes, the elegant greys give a sophisticated touch.

Available in 50mm, 60mm and 80mm thicknesses to suit your project requirements.

- ✓ Paving
- ✓ Circles
- ✓ Kerbs
- ✓ Alpha TRIO mixed size packs. See page 69

See page 83, 86 and 87 for product information. To achieve the pattern in the main image, please see page 86.



Autumn Gold



Burnt Oak



Brindle



Silver Haze



Charcoal

Alpha Antique is also available as a Permeable Block Paving range.

See Alpha Flow on page 73



Alpha Antique Silver Haze



Alpha Antique Autumn Gold



## Alpha Antique wins LARGE DRIVEWAY OF THE YEAR 2013



Winner Large Driveway  
T.S. McLaughlin

*The transformation from a highly overgrown front garden into a stunning yet functional double access Alpha Antique driveway is what caught the eye of our judges and won Terry McLaughlin of T.S. McLaughlin & Son the Large Driveway of the Year prize in 2013. As well as using circle features and excellent detailing the project now allows everyone to see the beautiful property that was previously hidden away.*



Alpha Antique Brindle with Charcoal Edging

## Two driveway transformations by BAI's in 2013



Before



Before



# Classico

Simple but striking, versatile and colourful

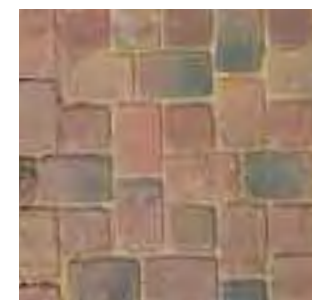
## Classico

An exceptional product for creating eye-catching designs. Striking patterns can be created by mixing individual colours, especially if they are laid as circles or curves.

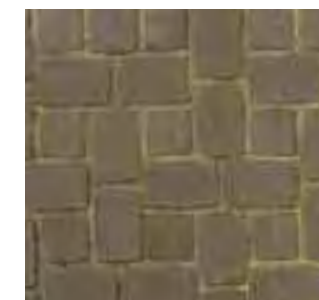
✓ Paving

✓ Circles

See page 83 and 87 for product information



Autumn Mix



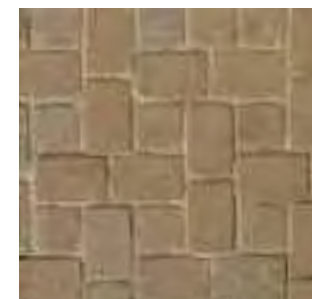
Brown



Charcoal



Natural



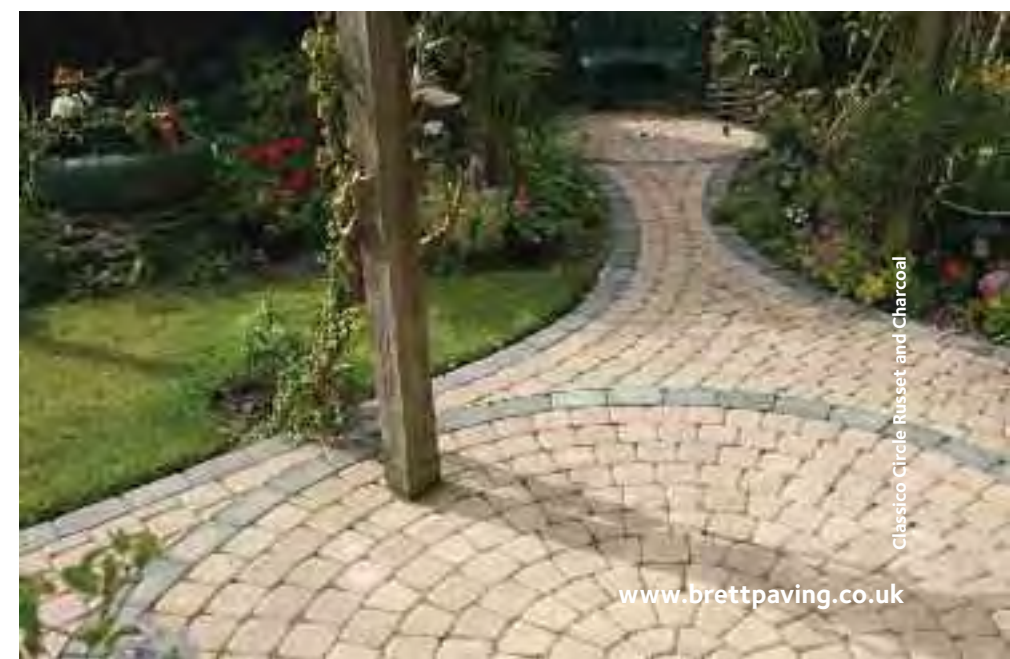
Russet

Note:  
Always use permeable  
chippings for jointing  
Classico paving before  
applying kiln dried sand.



Find out on page 62 why the Fleur-de-Lys pattern won Arun Driveways the 'Contractor's Choice' in 2013

Classico Autumn Mix with Natural Edging



Classico Circle Russet and Charcoal

[www.brettpaving.co.uk](http://www.brettpaving.co.uk)



## Classico Fleur-de-Lys wins CONTRACTORS' CHOICE 2013



*For the first time ever we've put our Approved Installers in the same difficult position the independent judges find themselves in every year and asked them to pick their favourite job from 2013. With no member being allowed to pick his own projects, the winner of the new 'Contractors' Choice Award' was **Arun Driveways** for this Classico Fleur-de-Lys Driveway in Autumn Mix and Natural. The Brett Approved Installers picked this job because they all know just how difficult a Fleur-de-Lys pattern is to set out and the extra time it takes to make a project look this fantastic with this type of complexity within the pattern.*

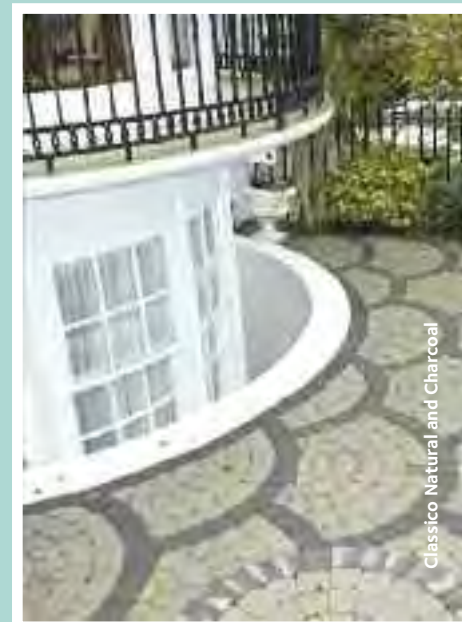


Classico Autumn Mix and Natural

Fleur-de-Lys patterns can be created with both Aura and Classico from the Brett block paving range and here are just a few more examples of how good the Fleur-de-Lys pattern can look on your driveway.



Classico Autumn Mix and Charcoal



Classico Natural and Charcoal



Classico Autumn Mix and Charcoal



# Regatta

Create distinctive styles  
with a cobbled look



Regatta Autumn Gold

## Regatta

The ever-popular Regatta range delivers a strong style statement with its cobbled look.

The beautifully riven blocks come in four different sizes and three attractive colours.

For pattern ideas visit the Regatta product page on [www.brettpaving.co.uk](http://www.brettpaving.co.uk). It is best complemented by High or Drivestyle Kerbs.

- ✓ Paving
- ✓ Circles
- ✓ Regatta TRIO mixed size packs. See page 69

See page 83 and 87 for product information.

To achieve the pattern in the image right, please see page 87..



Regatta Circle Autumn Gold

Enhance  
your setting  
whatever your style



Regatta Silver Haze



Autumn Gold



Burnt Oak

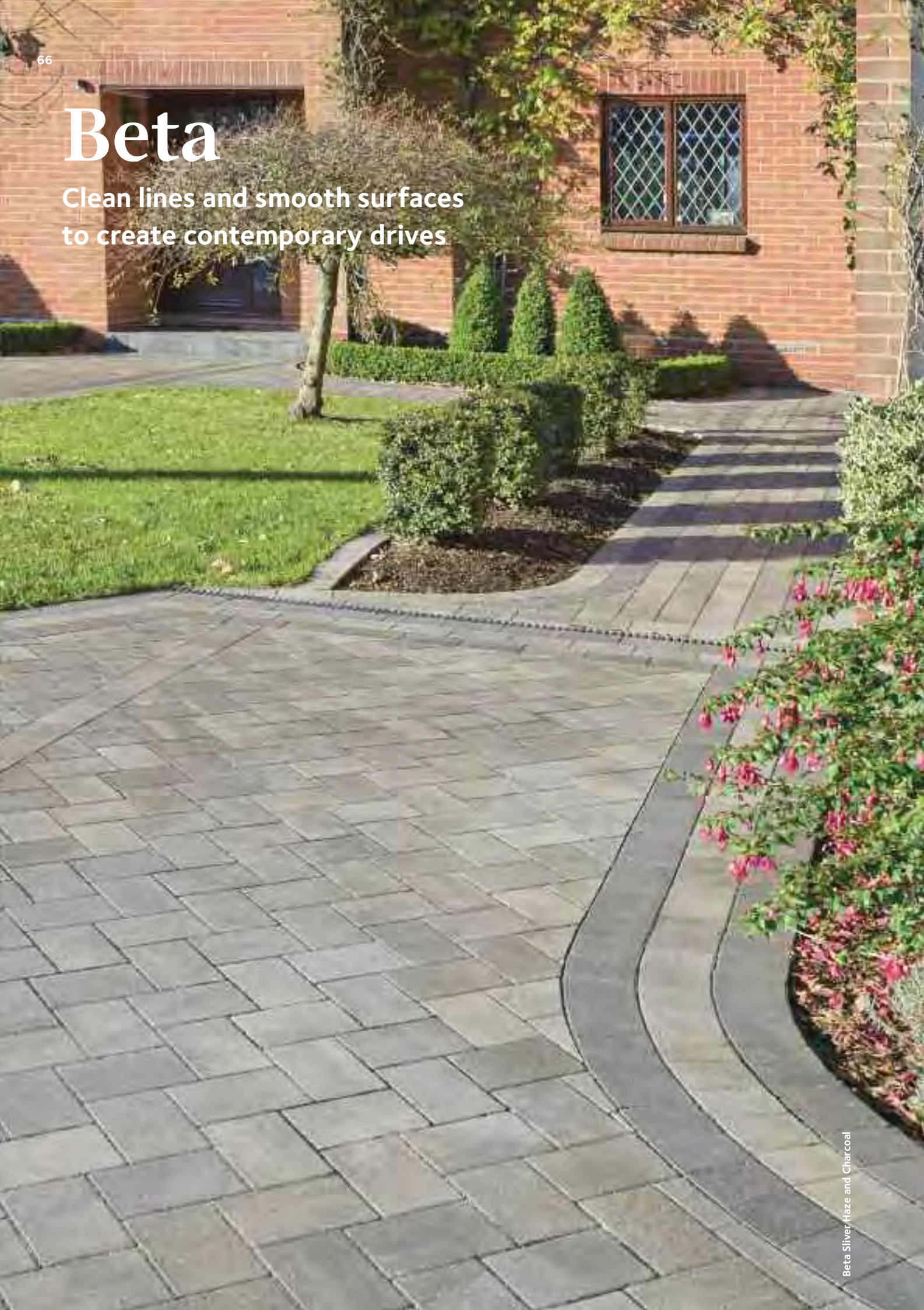


Silver Haze

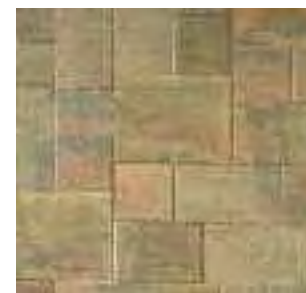


# Beta

Clean lines and smooth surfaces  
to create contemporary drives



Beta Silver Haze and Charcoal



Autumn Gold



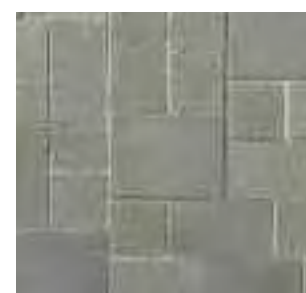
Autumn Mix



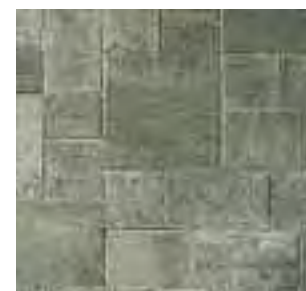
Brindle



Burnt Oak



Charcoal



Silver Haze

## Beta

Beta's clean lined, smooth surfaces give a wonderful contemporary design to any driveway. This low maintenance paving solution is also great in the garden due to the reduced gap between blocks which minimises soil collection. Available in five sizes, Beta allows for a wide range of laying patterns to get just the right look.

- ✓ Paving
- ✓ Circles

See page 83 and 86 for product information.

To achieve the pattern in the main image, please see page 86.



Beta Autumn Gold



Beta Autumn Mix



# TRIO paving from Brett

We have developed the Brett TRIO range of block paving to make life easier for the smaller contractor or DIY enthusiast looking to enhance their own driveway. Traditionally, the majority of our block paving products come in single size packs, which is ideal for the contractor as it allows them to mix and match block sizes to create just the look that they want to delight their customer.

However, for the smaller project, this could create problems with left over product once the installation is complete. The concept behind TRIO is to offer multi-sized product in the same pack, making it ideal for the smaller contractor or DIY-er since the ratio of block sizes in the pack is pre-determined around classic laying patterns for that range.

TRIO is therefore a three way winner for the smaller project:

- ✓ High quality paving
- ✓ Less product wastage
- ✓ Simple laying patterns

See page 86 for product information.



Regatta TRIO Autumn Gold

## Alpha TRIO



Alpha TRIO Brindle



Autumn Gold



Brindle



Silver Haze



Small  
105 x 140mm



Medium  
140 x 140mm



Large  
210 x 140mm

## Regatta TRIO



Regatta TRIO Autumn Gold



Autumn Gold



Silver Haze



Small  
100 x 133mm



Medium  
133 x 133mm



Large  
200 x 133mm



# Omega

The wide range of colours and accessories offers endless scope

Omega Autumn Gold

## Omega

Omega Paving is extremely popular, partly due to the range of thicknesses, making it suitable for most projects.

Its modern lines blend with almost any environment and develop a mature character over time.

Half Omega and Bishops Hat make finishing edges easier.

Team Omega Paving with complementary kerbs, such as the High or Drivestyle Kerb to create functional and attractive boundaries.

- ✓ Paving
- ✓ Half Omega
- ✓ Bishops Hat

See page 87 for product information

Omega Paving is also available as Permeable Block Paving. See Omega Flow on page 73



Autumn Gold



Autumn Mix



Brindle



Buff



Burnt Oak



Charcoal



Natural



Red

# Paving your driveway?

## What you need to know

Since October 2008, it has been a legal requirement to incorporate SuDS (Sustainable Drainage Systems) into any front garden or driveway over 5m<sup>2</sup> that is being paved over – even if you are only replacing an existing driveway. This is designed to prevent any surface water run-off to the highway. This requirement was introduced to help reduce the risk of future flooding events and build up a more sustainable infrastructure.

If it is not possible to incorporate a SuDS solution then you will need to seek Planning Permission from your Local Authority. Failure to do this could be a costly omission as your driveway may subsequently need to be replaced if you come to sell your property in the future.

### Option 1

Non-permeable solutions with soakaways



If the ground conditions are suitable, all you need to do is ensure that the design includes drainage

slopes and channels to direct water towards an effective soakaway, rain garden or soft landscaped area within your garden.

Brett stockists are able to supply a comprehensive range of drainage products. These include line drains, gratings and recessed manholes.

### Option 2

Permeable paving



This has been proven to be a highly effective way of minimising surface water

run-off whilst giving you all the aesthetic options you need to create a beautiful driveway. Some designs will even collect water for reuse in the garden.

Alternatively, you could look to use Driveway Gravel to allow water to pass through into the ground naturally.

### Option 3

Traditional paving



If you elect to use any non-permeable paving without soakaways for your driveway you will

need to apply for full planning permission from your Local Authority including drawings, forms and fees.

Once submitted, please be aware that permission could still be refused if it was deemed that a SuDS solution was possible.



## Expert installation

All Brett Approved Installers are able to provide you with detailed information and support to ensure that you are fully aware of what is involved to ensure compliance with the legislation.

When installing permeable paving it is essential to note that it requires a different sub-base and material design from normal paving to ensure water can drain freely.

To find your nearest Brett Approved Installer visit [www.brettpaving.co.uk](http://www.brettpaving.co.uk)

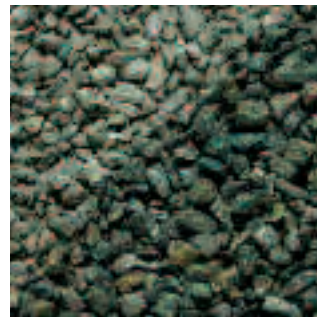


# Driveway Gravels and Stone Chippings

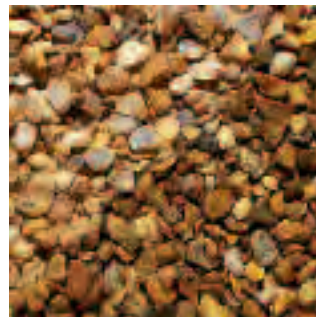
Granite Rose Grey

Hardwearing driveway gravels and chippings in a range of popular colours. Available in mini bags and bulk bags. Used with an appropriate sub-base, these products will form a permeable construction.

See page 85 for more details.



Green Granite  
Grade 14 🚗



Golden Gravel  
Grade 20 🚗



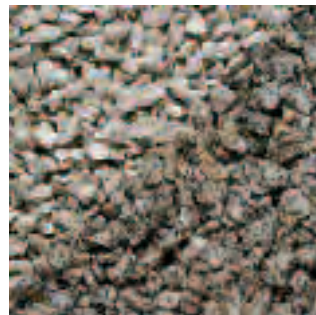
Lydd Pebbles  
Grade 20 🚗



Red Granite  
Grade: 14 🚗



Rose Grey Granite  
Grade: 14 🚗



Silver Grey Granite  
Grade: 14 🚗



Staffordshire Pink  
Grade: 20 🚗

Gravels and chippings are a great permeable option when laid on top of the correct substrate. They can play a key part in your driveway drainage.

## Alpha Flow

The popularity of Alpha Antique's rustic multi sized paving, now combined with permeability benefits.

- ✓ Paving
- ✓ Kerb
- ✓ Permeable Chippings

See page 86 for product information  
Alpha Flow is also available as non-permeable paving.  
See Alpha Antique on pages 56 - 57.



Autumn Gold



Brindle



Charcoal



Alpha Flow Autumn Gold

## Omega Flow

Omega Flow offers an excellent solution for permeable domestic driveways.

- ✓ Paving
- ✓ Permeable Chippings

See page 87 for product information.  
Omega Flow is also available as non-permeable paving.  
See Omega on page 70.



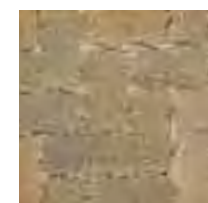
Autumn Gold



Brindle



Natural



Burnt Oak



Charcoal



Watch Omega Flow  
... scan the QR code



Omega Flow Charcoal



# Kerbs and Edgings

Aura Radial Kerbs and Paving Silver Fleck

Mobility Kerb Charcoal

High Kerb and Radial Autumn Mix

## Block Paving Kerbs

In addition to our range of driveway paving products we also offer a wide range of concrete block kerb products which will complement your new driveway - perfectly.

Flat Top Edging and Dish Channel Brindle

Alpha Antique Kerb Brindle

Rustic Kerb Autumn Mix and Staffordshire Pink Gravel

## High Kerb detailing helps win SMALL DRIVEWAY OF THE YEAR 2013



*Winner Small Driveway:  
Woods Paving*

*This new award for 2013 was created to acknowledge that great workmanship and looks don't always have to be on large expansive projects. Rob Woods from Woods Paving was the first winner of the Small Driveway of the Year 2013 award for this driveway. The judges were particularly impressed with the excellent step details created in the High Kerb, immaculate attention to detail and a great enhancement to a tight space.*



Alpha Antique Silver Haze



# Product information

78	Garden Paving
80	Patio Packs
82	Circle Features
83	Walling
84	Accessories
86	Drives
92	Installation
96	Sustainability







# Garden Paving

## Product Information

Here is some information to help you choose the right paving and features for your outdoor space.

### Natural Stone Paving Overview

		SINGLE SIZE PACKS	PATIO PACKS	CIRCLE FEATURES	ACCESSORIES
Elite Stone	Textured Stone		✓	✓	
	Polished Sandstone	✓	✓		
	Tumbled Sandstone		✓	✓	✓
	Granite	✓	✓	✓	✓
Style Stone	Sandstone		✓	✓	
	Slate		✓	✓	
	Limestone		✓	✓	
	Quartzite	✓	✓		
Creative Stone	Sandstone	✓	✓	✓	
Smart Stone	Sandstone		✓		
	Limestone		✓		

### Concrete Paving Overview

	SINGLE SIZE PACKS	PATIO PACKS	CIRCLE FEATURES	ACCESSORIES
Moderno	✓			
Westminster		✓	✓	✓
Bronte	✓	✓	✓	✓
Olde English Brick	✓		✓	
Canterbury	✓	✓		
Textitone ECO	✓			
Chaucer	✓			
Patio Square	✓			
Stamford	✓			
Quorndon	✓			
Broadway Economy	✓			



# Single Size Paving Packs

Here is some information to help you to work out paving quantities.

Single sized paving packs provide an efficient method of purchasing the Brett garden paving range, in particular allowing quicker installation when covering larger areas. A wider choice of repeatable patterns can be created by mixing these packs. To help you select and install a pattern Brett offers a comprehensive library of designs – visit [www.brettpaving.co.uk](http://www.brettpaving.co.uk).

### Single Size Packs

Plan Size (mm)	Quantity per pack	900x 600	900x 150	600x 600	600x 450	600x 300	600x 150	450x 450	450x 225	400x 400	300x 300	150x 150
Elite Polished Sandstone 20mm	No. Sq.m.	-	64 9.32	-	-	-	-	-	-	-	-	-
Elite Granite 30mm	No. Sq.m.	-	64 9.32	-	-	-	-	-	-	-	-	-
Style Quartzite 20mm	No. Sq.m.	-	-	-	-	-	66 6.44	-	-	-	-	-
Creative Sandstone 22mm Calibrated	No. Sq.m.	28 15.54	-	40 14.88	-	85 16.07	-	-	-	-	-	-
Moderno 40mm	No. Sq.m.	-	-	-	-	-	-	-	-	90 14.40	-	-
Bronte 32mm	No. Sq.m.	-	-	32 11.91	64 17.96	64 12.10	-	64 13.54	-	-	64 6.15	-
Old English Brick 50mm	No. Sq.m.	-	-	-	-	-	-	44 9.31	44 4.76	-	-	-
Canterbury 32mm	No. Sq.m.	-	-	30 11.16	-	60 11.35	-	60 12.70	-	-	60 5.77	-
Textitone ECO 32mm/35mm*	No. Sq.m.	-	-	26* 9.36	-	26* 4.68	-	56 11.30	-	-	52 11.11	-
Chaucer 32mm/35mm*	No. Sq.m.	-	-	26* 9.36	-	-	-	56 11.34	-	-	-	-
Stamford 32mm	No. Sq.m.	-	-	32 11.91	-	-	-	64 12.96				
Quorndon 38mm	No. Sq.m.	-	-	25 9.00	-	25 4.50	-	50 10.13	-	-	50 4.50	-
Quorndon 50mm	No. Sq.m.	-	-	-	-	-	-	40 8.10	-	-	-	-
Broadway Economy 32mm	No. Sq.m.	-	-	30 10.80	-	-	-	60 12.15	-	-	-	-
Patio Square 40mm	No. Sq.m.	-	-	-	-	-	-	-	-	-	-	240 5.40

All dimensions quoted are nominal and are for guidance only. Actual sizes of individual units, in particular natural stone will vary. The square metre (sq.m) coverage figures assume a 10mm joint is used.



Granite Paving Patio Pack and Circle in Silver Grey





# Patio Packs

Available in all of our most popular paving ranges, Patio Packs are ideal for creating garden patios and pathways, quickly and easily.

- Each Patio Pack includes mixed sizes of paving flags to cover a defined area.
- ✓ Natural Stone products have a range of accessories ideal for framing and extending paved areas
- ✓ Both Concrete Paving and calibrated Natural Stone products have consistent thicknesses to provide quick and easy installation.

## Natural Stone Patio Packs

		900 x 600	600 x 600	600 x 400	600 x 300	400 x 400	400 x 200	300 x 300	200 x 200	Area
Code		A	D	Q	F	R	S	K	T	sq.m.
Natural Stone (ex Quartzite)	4 size	13	13		13			9		15.37
Natural Stone (Creative Stone Only)	4 size	6	6		6			5		7.18
Quartzite	4 size			16		32	32		16	12.17

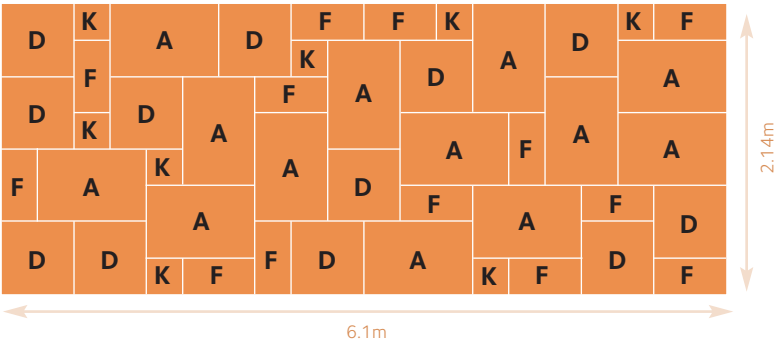
## Concrete Patio Packs

Concrete Garden Paving		750 x 600	600 x 600	600 x 450	600 x 300	450 x 450	450 x 300	300 x 300	Area
Code		B	D	E	F	G	H	K	sq.m.
Westminster Large	7 size	4	8	9	10	12	8	6	12.96
Westminster Medium	6 size		7	6	6	4	4	8	7.61
Westminster Small	3 size		9		8			8	5.63
Bronte	5 size		7	8	6	4		8	7.60
Canterbury	3 Size		9		8			8	5.63

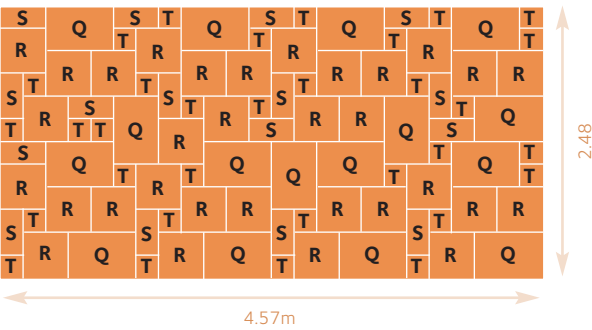
### Natural Stone Patio Packs

The Natural Stone Patio Packs are designed to help to provide great looking patios whilst minimising waste and giving access to pre-defined laying patterns. The defined pack size makes it easy to calculate your purchasing requirements.

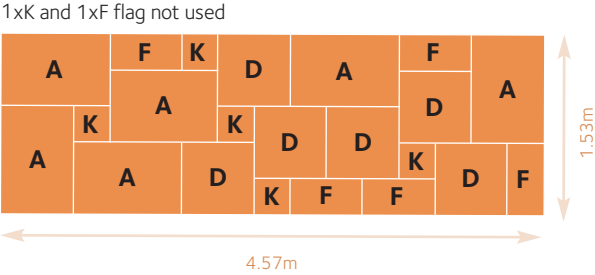
Natural Stone Large Patio Pack 1xD and 1xK flag not used



Style Stone Quartzite Patio Pack



Creative Stone Small Patio Pack



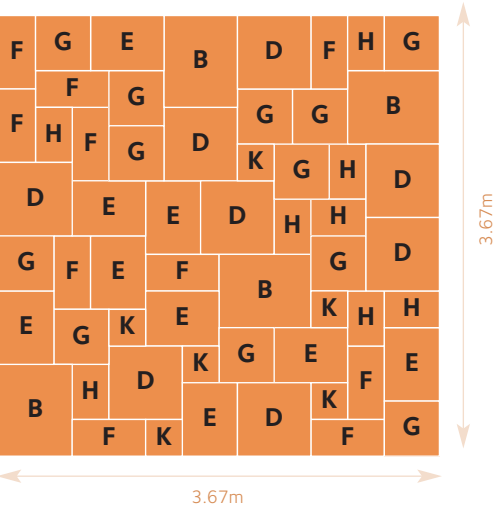
These are a sample of laying patterns, for more options please visit [brettpaving.co.uk](http://brettpaving.co.uk)  
All dimensions quoted are nominal and are for guidance only. Actual sizes of individual units, in particular natural stone will vary.  
The square metre (sq.m) coverage figures assume a 10mm joint is used.



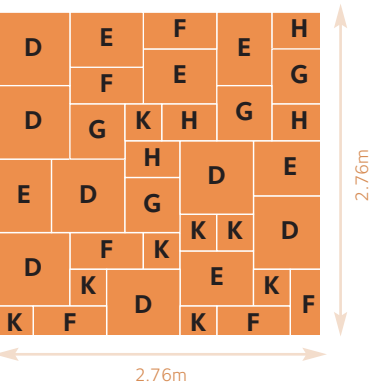
### Westminster and Bronte Patio Packs

The Bronte and Six Size Westminster packs all have the same square meterage and very similar quantities which means the same layout patterns can be used for any of these products.

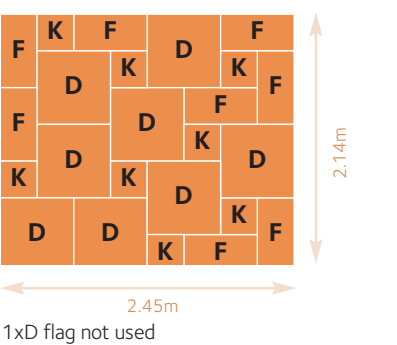
Westminster 7 size pack



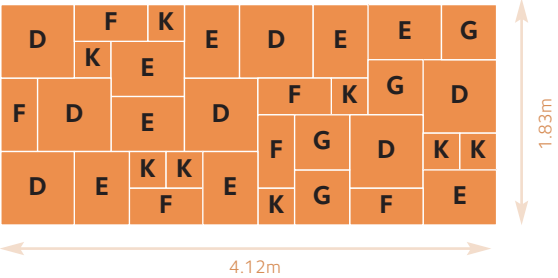
Westminster 6 size pack



Westminster 3 size pack



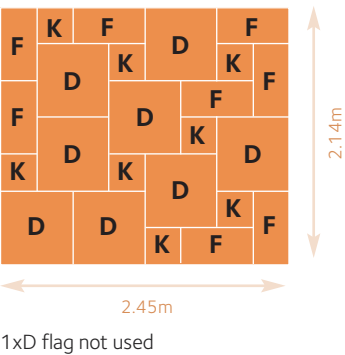
Bronte 5 size pack



### Canterbury Patio Pack

The Canterbury 3-Size Patio Packs are a great way to create your ideal outdoor space with pre-defined laying patterns and pack size both helping manage your project.

3 size pack



These are a sample of laying patterns, for more options please visit [brettpaving.co.uk](http://brettpaving.co.uk)  
All dimensions quoted are nominal and are for guidance only. Actual sizes of individual units, in particular natural stone will vary.  
The square metre (sq.m) coverage figures assume a 10mm joint is used.







# Circle Features

Instantly give an attractive focal point in any space.

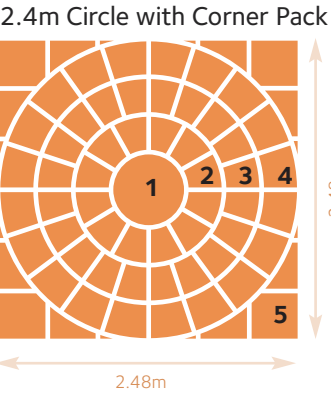
Features can make stunning centrepieces. Additional complementary units will further enhance your garden. Use Corner Kits to frame circular features and bring back to a rectangular shape that is then easy to extend. If you don't want to use a Circle Corner Kit, why not add Decorative Aggregates, flower beds or more lawn? Alternatively, there are many block paving units or stone setts that can extend circles infinitely with similar or contrasting colours.

## Circle Kits

Plan Size (mm)		Ring 1	Ring 2	Ring 3	Ring 4	Ring 5	Total Piece No.	Total Pack Sq.m.	Corner Kit Pieces	Total Pack Sq.m.
Natural Stone 2.4m Circle and Corner Kit		Ring Dia. (mm)	600	1200	1800	2400				
		Piece No. (mm)	1	12	20	20	73	6.15	Included in Circle Pack	
Westminster 2.7m Circle		Ring Dia. (mm)	900	1800	2700				Yes, sold separately	
		Piece No.	4	12	12		28	5.94	20	3.48
Bronte 1.8m Full Circle		Ring Dia. (mm)	600	1200	1800				Yes, sold separately	
		Piece No.	4	12	20		36	2.69	12	2.02
Bronte Half Circle		Ring Dia. (mm)	600	1200	1800	2560	3460		No	
(2 packs required for complete circle)		Piece No.	2	6	10	10	10	38	4.84	

## Natural Stone Circle Packs

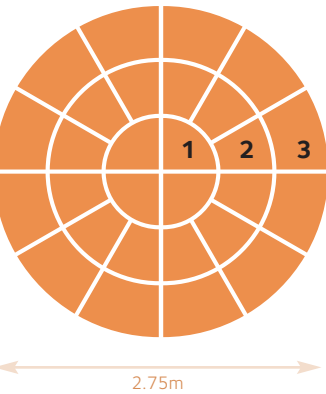
Description	Ring	Pack	Nominal Thickness mm	No per pack	Sq.m per pack
1	Full Circle with Corners		Varies	1	6.15
2	(2.4m)			12	
3				20	
4				20	
5				4 Corners	



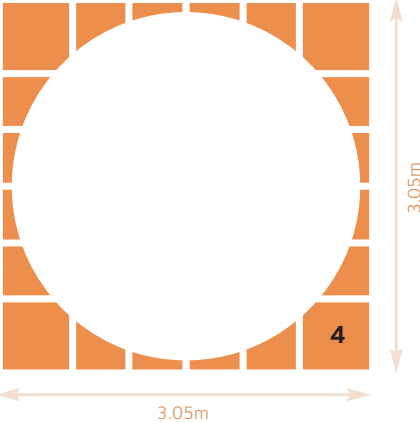
## Westminster Circle and Corner Kits

Description	Ring	Pack	Nominal Thickness mm	No per pack	Sq.m per pack
1	Full Circle Kit (2.7m)		38	4	5.94
2				12	
3				12	
4	Full Circle Corner Kit (2.7m)		38	4 Corners	3.48

2.7m Circle Kit



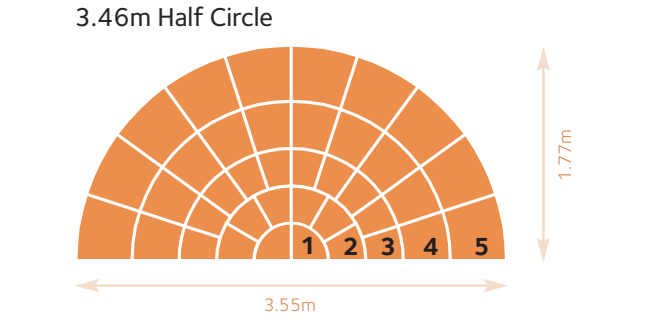
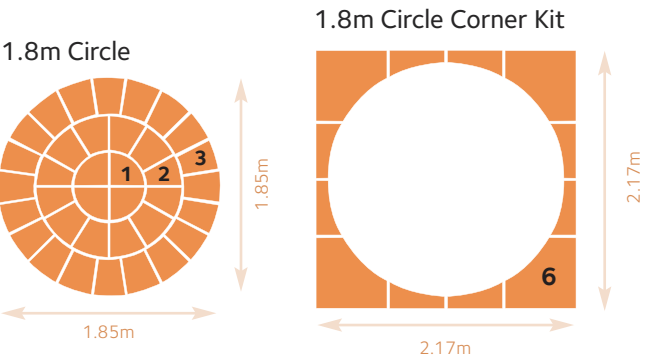
2.7m Circle Corner Pack



These are a sample of laying patterns, for more options please visit [brettpaving.co.uk](http://brettpaving.co.uk)  
All dimensions quoted are nominal and are for guidance only. Actual sizes of individual units, in particular natural stone will vary.  
The square metre (sq.m) coverage figures assume a 10mm joint is used.

## Bronte Circle and Corner Kits

Description	Ring	Pack	Nominal Thickness mm	No per pack	Sq.m per pack
1	Full Circle Kit (1.8m)		32	4	2.69
2				12	
3				20	
1	Half Circle Kit (3.46m)		32	2	4.84
2				6	
3				10	
4				10	
5				10	
6	Full Circle Corner Kit (1.8m)		32	1	2.02



# Walling

## Westminster Walling

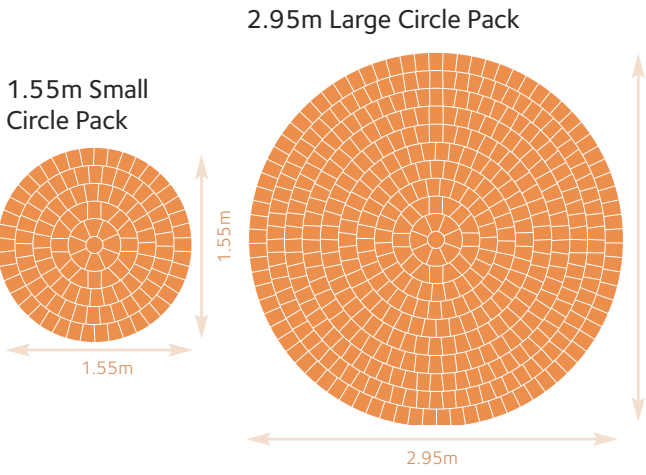
The Westminster walling range comes in full blocks and two different sizes of copings, see table below for dimensions.

Westminster Walling				
Type	Size (mm)	No per pack	Face area per pack (m²)	Linear m per pack
Full Block	327x102	54	2.04	-
Single Coping/ Edging Unit	327x102x107(h)	16	-	5.39
Double Coping	327x215x89(h)	20	-	6.74

## Alpha, Beta and Regatta Circles

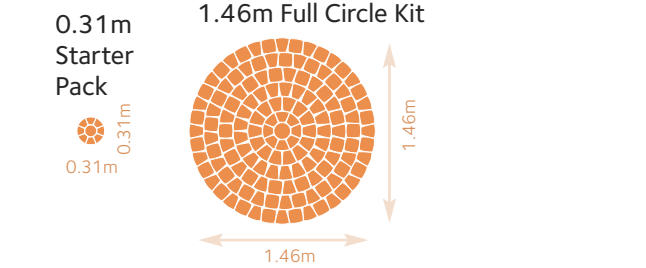
Description	Ring	Pack	Nominal Thickness mm	No per pack	Sq.m per pack
50mm Small Circle Pack (1.55m)			50	127	1.89
50mm Large Circle Pack (2.95m)			50	464	6.84
60mm Small Circle Pack (1.55m)			60	127	1.89
60mm Large Circle Pack (2.95m)			60	464	6.84

50mm circles only available in the Alpha Antique range



## Aura and Classico Circle

Description	Ring	Pack	Nominal Thickness mm	No per pack	Sq.m per pack
Circle Starter Pack (0.31m)			60	9	0.08
Full Circle Kit (1.46m)			60	143	1.67



## Garden Walling

Complements the Brett range of garden paving.

Garden Walling				
Type	Size (mm)	No per pack	Face area per pack (m²)	Linear m per pack
Large Block	300x160mm	64	3.37	-
Medium Block	300x75mm	128	3.37	-
Small Block	200x75mm	128	2.28	-
Coping	600x150mm	60	-	36.6







# Accessories

Find essential product information here for edgings, patio squares and features.

## Edgings

### Rope Top Edgings

No per pack	Linear m pack
42	25.24

Available in: Charcoal, Terracotta and Brindle  
Corner Posts are perfect to complement Rope Top Edgings.



Rope Top Brindle

### Scallop Edgings

No per pack	Linear m pack
48	28.80

Available in: Buff and Natural

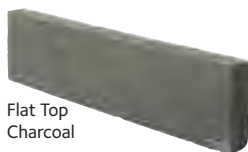


Scallop Buff

### Flat Top Edgings

No per pack	Linear m pack
42	38.50

Available in: Charcoal and Brindle



Flat Top Charcoal

### Round Top Edgings

No per pack	Linear m pack
48	28.80

Available in: Charcoal and Brindle



Round Top Brindle



## Olde English Brick

### Radius Edging

525 ext. dim.			
x225	26	3.08	8.43

Note: Creates old style uneven surface not suitable for a driveway  
Sq. m. figures assume 10mm joints  
Nominal thickness: 50mm



## Millstone

Size (mm)	No per pack
600mm dia. x100	1

Colours: Millbank, Old Gold



## Stepping Stones

### Westminster

Size (mm)	No. per pack
540x 400	24



### Bronte

Size (mm)	No. per pack
300x300	28



## Natural Stone Setts

### Elite Granite Single Size Setts

Size (mm)	No. per pack	Sq.m. per pack
100x100x50	700	8.47*

Colours: Silver Granite  
\*Sq.m. figures assume 10mm joints.



### Elite Tumbled Sandstone Mixed Size Setts

Size (mm)	No. per pack	Sq.m. per pack
210x140mm	160	
140x140mm	160	11.64*
105x140mm	160	

Colours: Forest Glen, Modak, Twilight, Fossil Mint  
\*Sq.m. figures assume 10mm joints.



# Garden and Driveway Aggregates

## Gravels, Stones, Pebbles and Cobbles

All decorative aggregates are available in both mini bags and bulk bags.

Product	Grade	Bags per pallet	Coverage kg/m²
Blue Slate	40	50	62.5
Cotswold	20	50	75
Durite Canterbury Spar	11	50	60
Golden Gravel	10	50	70
Golden Gravel	20	50	70
Green Granite	14	50	75
Green Slate	40	50	62.5
Lydd Pebbles	20	50	75
Lydd Pebbles	40	50	45

Product	Grade	Bags per pallet	Coverage kg/m²
Natural Rounded Gravel	10	50	75
Plum Slate	40	50	62.5
Red Granite	14	50	75
Rose Grey Granite	14	50	75
Scottish Beach Pebbles	20-30	50	20
Scottish Beach Cobbles	50-80	50	45
Silver Grey Granite	14	50	75
Staffordshire Pink	20	50	70
White Marble	14	50	70



Coverage rate based on 50mm depth  
See pages 48 and 72







# Drives Product Information

### Key considerations

Consider what the driveway is to be used for. 50mm thick blocks are suitable for lightly trafficked domestic drives, use 60mm thick blocks for larger vehicles, or for extra robustness 80mm blocks.

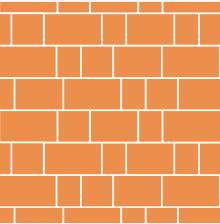
	Thickness			Features & Accessories		
	50mm Light Cars	60mm Saloon Cars	80mm Heavy Use	Circle Kits	Range Specific Kerbs	Complementary Kerbs
BLOCK PAVING						
Aura		✓		✓	✓	
Alpha Antique	✓	✓	✓	✓	✓	
Classico		✓		✓		✓
Regatta		✓		✓		✓
Beta		✓	✓	✓		✓
Omega	✓	✓	✓			✓
TRIO PAVING						
Alpha TRIO	✓	✓		✓	✓	
Regatta TRIO		✓				✓
PERMEABLE PAVING						
Alpha Flow		✓	✓	✓	✓	
Omega Flow		✓	✓			✓



## Alpha Antique, Alpha Flow and Beta

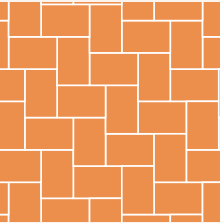
Plan Size (mm) No. per sq.m.	Small 105x140	Medium 140x140	Large 210x140	Extra Large 252x140	Jumper 280x210
ALPHA ANTIQUE					
50mm					
No. per pack	732	552	368		
Sq.m. per pack	10.76	10.82	10.82		
60mm					
No. per pack	702	528	352	252	168
Sq.m. per pack	10.32	10.35	10.35	8.89	9.88
80mm					
No. per pack	480	360	240	180	120
Sq.m. per pack	7.06	7.06	7.06	6.35	7.06
ALPHA FLOW					
60mm					
No. per pack	702	528	352		
Sq.m. per pack	10.32	10.35	10.35		
80mm					
No. per pack	510	384	256		
Sq.m. per pack	7.5	7.53	7.53		
BETA					
60mm					
No. per pack	672	504	344	234	156
Sq.m. per pack	9.88	9.88	10.12	8.26	9.17
80mm					
No. per pack	432	324	232	180	120
Sq.m. per pack	6.35	6.35	6.62	6.35	7.06

### 4 Size Random Stretcher Course



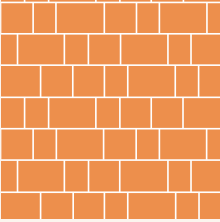
Example shown suitable for Alpha Antique and Beta. Pattern requires per sq.m:  
10 No. Small,  
10 No. Medium  
10 No. Large,  
10 No. Extra large

### 45° Herringbone



Example shown suitable for Alpha Antique, Alpha Flow and Beta Pattern requires per sq.m:  
34 No. Large

### 3 Size Random Stretcher Course



Example shown suitable for Alpha Antique Alpha Flow and Beta Pattern requires per sq.m:  
16 no. Small  
16 no. Medium  
16 no. Large



## Aura and Classico

	Stone	Square Stone	Large Circle Stone
Plan Size (mm) No. per sq.m.	171x114 50	114x114 75	114x111 90
AURA			
60mm			
No. per pack	385	539	693
Sq.m. per pack	7.50	7.01	7.74
CLASSICO			
60mm			
No. per pack	378	567	693
Sq.m. per pack	7.37	7.37	7.74

## Regatta

	Medium	Large	Extra Large	Jumper
Plan Size (mm) No. per sq.m.	133x133 57	200x133 38	240x133 32	266x200 19
REGATTA				
60mm				
No. per pack	432	288	240	144
Sq.m. per pack	7.64	7.66	7.66	7.66

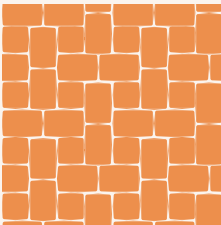
## Alpha TRIO and Regatta TRIO

	Sq m per pack	Nos. per mixed size pack		
		Large	Medium	Small
		210x140	140x140	105x140
ALPHA TRIO				
50mm	11.64	198	198	132
60mm	9.52	162	162	108
Location	Sq m per pack	Nos. per mixed size pack		
		Large	Medium	Small
		200x133	133x133	100x133
REGATTA TRIO				
Barrow	8.32	156	156	104
Cliffe	8.64	162	162	108
Poole	8.50	180	120	120

## Omega and Omega Flow

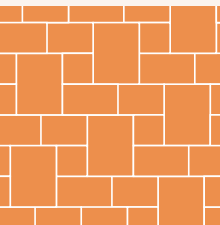
Plan Size No. per sq.m.	Standard 200x100 50	Half Block 100x100 100	Bishops Hat 280x192 29
OMEGA			
50mm			
No. per pack	488		
Sq.m. per pack	9.76		
60mm			
No. per pack	404	768	1
Sq.m. per pack	8.08	7.68	-
80mm			
No. per pack	308	576	1
Sq.m. per pack	6.16	5.76	-
OMEGA FLOW			
60mm			
No. per pack	404		
Sq.m. per pack	8.08		
80mm			
No. per pack	308		
Sq.m. per pack	6.16		

### Victorian Weave



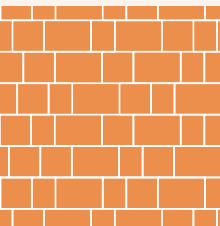
Example shown suitable for Aura and Classico Pattern requires per sq.m:  
19 No. Square Stone  
38 No. Stone

### 4 Size Herringbone



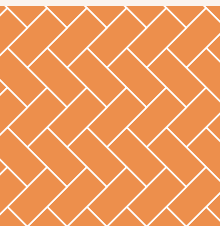
Example shown suitable for Regatta Pattern requires per sq.m:  
8 No. Medium  
8 No. Large  
8 No. Extra Large  
8 No. Jumper

### 3 Size Random Stretcher



Example shown suitable for Alpha TRIO Pattern requires per sq.m:  
12 No. Small  
18 no. Medium  
18 No. Large

### 45° Herringbone



Example shown suitable for Omega and Omega Flow Pattern requires per sq.m:  
50 No. Standard

More patterns are available at [www.brettpaving.co.uk](http://www.brettpaving.co.uk)



# Kerbs and Channels

Kerbs are the perfect way to outline your project.

The versatility of a kerb enables you to complete a stunning drive, using complementary or contrasting products. Kerbs can also be used to build steps, raised beds or simply to define boundaries.



High and Rustic Kerb

No per pack	Lin. m pack	No per lin m
168	16.8	10

Corners and Radials are sold individually in both Half Batter and Bullnose designs. A Flat Half Batter corner unit is also available.

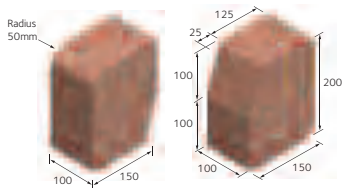
Colours:

High Kerb: Autumn Gold, Brindle, Charcoal, Autumn Mix, Red

Rustic Kerb: Autumn Gold, Brindle, Charcoal,

Higher design kerb for more presence

- ✓ Rustic – larger kerb unit with tumbled finish
- ✓ High – larger kerb unit



Aura, Alpha Antique and Drivestyle Kerb

No per pack	Lin. m pack	No per lin m
270	27	10

Corners and Radials are sold individually in both Splay and Bullnose designs.

Colours:

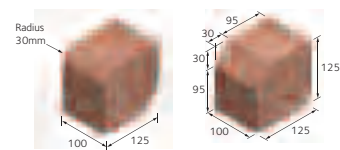
Aura Kerb: Burnt Fleck, Silver Fleck, Bronze Fleck

Alpha Antique Kerb: Autumn Gold, Brindle, Charcoal

Drivestyle Kerb: Autumn Gold, Brindle, Charcoal, Autumn Mix, Red

Lower profile design kerb system

- ✓ Alpha Antique – tumbled finish
- ✓ Aura – contains the same sparkle as Aura paving
- ✓ Drivestyle – non-tumbled finish for clean lines



Mobility Kerb

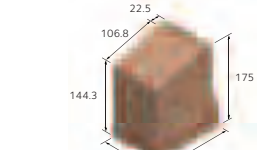
No per pack	Lin. m pack	No per lin m
270	27	10

Colours:

Available in Brindle (BR) or Charcoal (CL) to enhance our block paving range.

The Brett Mobility Kerb has been designed to provide sufficient warning of a pavement edge for users with visual impairment whilst not creating a hazard for physically limited users. This low profile kerb system is ideal for use with our Beta Omega Pencil Edge paving ranges to create a trip free environment in your outdoor paving.

- ✓ Good tactile feel for partially sighted people
- ✓ Selection of fittings for ease of design
- ✓ Ideal for shared space developments



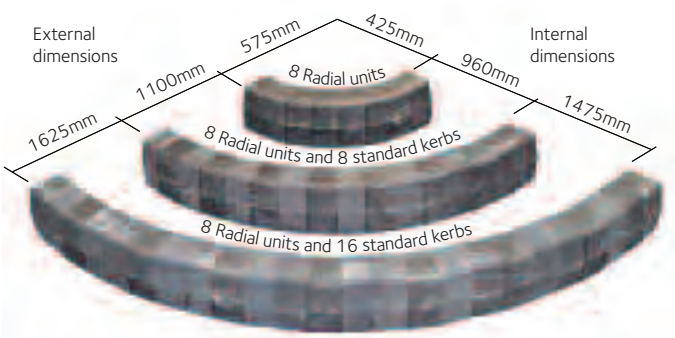
The Brett High, Rustic, Aura, Alpha Antique and Drivestyle kerbs are all reversible to provide both Bullnose and Splayface profiles. Units are reversible to achieve internal or external corner configurations. Radials and corner transition units are also available.

Brett kerbs also have a complete range of transitions available to ensure maximum flexibility. For more information on Transitions please contact our Customer Services.

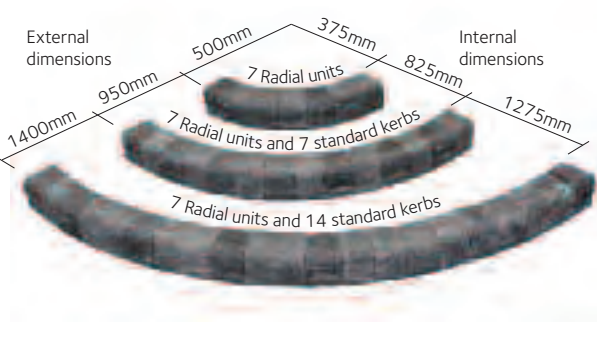
## Creating curves – Kerb Radials explained

Having chosen your kerb product, the following diagrams show how the Radial Kerb and Standard Kerb work together to form different curves, both on internal and external radii. This helps you build a complete kerb detail into your project.

### High and Rustic Kerbs



### Aura, Alpha Antique and Drivestyle Kerbs



## Dished Channels



Plan size (mm)	No per pack	No per lin. m	Lin. m per pack
60mmx200mmx200mm			
Dished Channels	160	5	32.0
Dished Channel Corners	1	5	-
Colours: Autumn Gold, Brindle, Burnt Oak, Autumn Mix, Charcoal			

## Bishop's Hat



Thickness: 60mm  
Colours: Buff, Charcoal, Natural

Blocks and Features

Plan size (mm)	No per pack	m² per pack	No per m²
280x192	1	-	29

The Bishops Hat provides an attractive and practical edge detail, when paving area is 45° herringbone and basket weave pattern. The smooth block with chamfered edges complements the Brett Omega range and is suitable for all gardens and drives.

## Block Paving Jointing Sand

Kiln Dried Sand is used for filling joints on block paving creating a close and tight bond. The coverage is dependent on the thickness of the block paving.

Jointing Sand coverage per 25kg bag
Block Paving thickness
50mm = approx. 7.6 sq.m
60mm = approx. 5.6 sq.m
80mm = approx. 4.4 sq.m

## Permeable Chippings for Block Paving

Permeable Chippings have an angular shape and are essential for installations of permeable paving. Permeable Chippings are used to fill in the large voids between permeable blocks to ensure a strong joint.

Also, for Aura and Classico standard block paving, use Permeable Chippings, then top up with jointing sand (this is not permeable).

Permeable Chippings coverage per 25kg bag
60mm Permeable Paving = 4 sq.m
80mm Permeable Paving = 3 sq.m
Aura/Classico Rectangular Block Patterns = 6.3 sq.m
Aura/Classico Circles/Fleur de Lys Patterns = 5 sq.m

Available in 25kg and bulk bags.





# Installation

Having got an idea for the look you want and the products you might use, the information in this section will help you onto the next stage if you have chosen to go down the Do It Yourself route.

Together with [www.brettpaving.co.uk](http://www.brettpaving.co.uk), you can find all you need to complete your project successfully, from help with design through to information on products and patterns.

Many Brett stockists can also provide design help as part of their service and are able to advise on many aspects of your project.

Find your local stockist today by visiting [www.brettpaving.co.uk/wheretobuy](http://www.brettpaving.co.uk/wheretobuy)



# How to lay a patio

No matter what your project or materials you are using, if you have decided to do it yourself there are a number of factors you need to be aware of and important steps you need to take.

Here are some examples of the steps required to cover the most basic patio paving installation.

If you need any further information on our products or installation call our Customer Services Team on 0845 60 80 570 or email [landscaping@brett.co.uk](mailto:landscaping@brett.co.uk)

## Before you start...

Draw a simple plan of your home and garden, sketching where you would like areas to be paved. Once your plan has been finalised, lay out lengths of string to mark out the dimensions of your purposed patio in position. When you are happy with this, let the digging commence.

### Hints & Tips

Arrange for material to be stacked on a dry base and allow enough room for mixing concrete and mortar.

**NB. Paving products can be heavy. Assess the safest method of installing them.**

## STEP 1 : Site Preparation

Mark the pegs beforehand to indicate the depth and remember to allow for a gradual slope away from your property. Using the tape measure mark out the patio area. Check the corners, using a builders square. Removing topsoil is easily done using an edging iron and cutting the turf into manageable squares. Simply scoop with a spade and remove using a wheelbarrow and skip.



The excavated depth should be 150mm or 6 inches from the finished patio level. Measure the final depth of excavation using the pegs and strings.

Check the depth at the edge using a tape measure. Compact the soil with the Vibrating Plate Compactor and re-check the overall depths and slope of the area using the pegs and spirit level.



If you find soft spots in the soil, further excavation may be required. These spots can then be filled and consolidated with sub-base material.

Check all 90° corners and depths thoroughly before putting down the sub-base material

When using excavation machinery please follow the manufacturer's guidelines including acceptable levels of exposure and in particular use ear protection.

### Hints & Tips

We also recommend that the paving flags are selected from different packs as it is being laid to ensure an even colour mix.

## STEP 2: The Sub-Base

Having tipped the sub-base material into the laying area, rake into position to a consistent depth of 100mm or 4 inches.



Once the area is covered, check the depth using a spirit level, pegs and string line.

Compact the area using a Vibrating Plate Compactor, making sure the entire area has been compressed at least twice. Check again for any sinking areas. If this occurs, an extra depth of sub-base material should be considered.



Once the sub-base is smooth, flat and to the appropriate level, check the drainage slope with a straight edge and spirit level.

When using the vibrating plate machinery please follow all manufacturer's guidelines including acceptable levels of exposure and in particular use ear protection.

## STEP 3: Preparing the Mix and Laying Paving Flags

When preparing the cement mix, please avoid direct handling of cement, always cover your skin.

Either using the cement mixer or wheelbarrow and shovel, prepare a mortar mix of 5 parts building sand, 1 part cement and add water to create a doughy consistency.

To check this is correct use the 'snow ball' test, pick up a handful of mortar mix and squeeze into a ball, when you let go the mix will retain its shape without oozing water or falling apart.



Starting in the corner, trowel a bed of mortar to cover the area intended for the first paving flag. The depth of the mortar bed should be approximately 35-40mm. Level off but ensure the mortar is not compact as you want the flag to sit within the mix about 10-15mm deep.

Remember when lifting and carrying paving units always consider the weight before attempting to lift. If it is heavy, get help. Take care not to trap fingers whilst handling paving units.

Lower the first paving flag into position, holding it diagonally will make it easier to lower it. Settle it cleanly into the mortar without sliding it about so a good bond forms between the mortar and paving flag.



Line up the paving flag with the string lines and gently tap it into the mortar using the rubber mallet.

Repeat the process, continuously checking against the string line. Also, use the spirit level to check the surface is at the correct level.

Check that no edges are standing up proud simply by running your hand over the joints. Ensure consistent gaps, ideally of 10-15mm between the slabs.

Leave the slabs for at least 24 hours so that the sand cement mix can set.

## STEP 4: Cutting

Great care is needed and it is essential to use equipment specially designed for this operation. Diamond disc cutters with water suppression are ideal. They are readily available at your local equipment hire store.



Check you are wearing good personal protective equipment for this activity.

Mark the paving flag surface with the intended cutting line for guidance. Place the paving flag on a platform and carefully saw using a diamond disc cutter.

When using cutting equipment please follow all manufacturer's guidelines including acceptable levels of exposure and in particular use eye protection.

## STEP 5: Pointing

You can either buy ready mix compound or, using the shovel and trowel, prepare a jointing mix of 5 parts building sand, 1 part cement and water to a damp, semi-dry consistency.



Firm it into the joints using the trowel and finish with the pointing iron, compacting the mix into the gaps and producing neat grooves.

Carefully remove any excess pointing material using the trowel and yard broom, ensuring no residue is left on the slab surface.

Other chemical jointing compounds are available, contact our Customer Services Team on 0845 60 80 570 for more information.

## Materials and Tools Checklist

The key to starting off this style of project is the equipment, correct tools and materials for the job and having them all close to hand. Quantities of the following materials will vary depending on the size and sub-base requirements of your patio.

### Materials

- Sub-base Material (MOT Type 1)
- Brett Building Sand
- Cement
- Washed Sharp Sand
- Paving Flags



### Tools

- Trowel
- Pointing Iron
- String Line and Pegs
- Edging Iron
- Rubber Mallet
- Builders Square
- Rake
- Shovel
- Spirit Level
- Skip
- Wheelbarrow
- Pick axe
- Tape Measure
- Yard Broom
- Vibrating Plate Compactor
- Diamond Disc Cutter (Optional)
- Mini-Excavator (Optional)
- Cement Mixer (Optional)

You will need essential personal protection equipment:  
Gloves, Safety Goggles, Face Mask, Ear Protectors, Knee Pads and Safety Shoes.

### Hints & Tips

Clean mortar spillage immediately to prevent staining and if possible joints should be pointed on a dry day.





# How to lay block paving

The professionals make laying block paving look easy, but with the right materials and some manual work it is not quite the major undertaking that you may have first thought. Follow this simple step by step example guide to laying a non-permeable driveway.

## Before you start...

Draw a simple plan of your home and garden, sketching where you would like areas to be paved. Once your plan has been finalised, lay out lengths of string to mark out the dimensions of your proposed patio in position. When you are happy with this, let the digging commence.

### Hints & Tips

Have an eye on the weather. Installing block paving is extremely difficult in the rain due to its effect on the sands and aggregates. Therefore plan ahead and, if rain is likely, protect large areas either with plastic sheets or even a gazebo.

## STEP 1: Site Preparation

Depending on the size of the area, using the shovel or mini excavator dig out to the advised level. This will depend on your existing surfaces, our Customer Services team will be able to advise as to the appropriate depth.



If you find soft spots in the soil further excavation may be required. These spots can then be filled and consolidated with sub-base material.

Remove all waste materials from the site using a wheelbarrow and skip.

When using excavation machinery please follow all manufacturers' guidelines including acceptable levels of exposure and in particular use ear protection.

### Hints & Tips

Falls are crucial to traditional block paving. It should never be installed flat. Always ensure a gradient of at least 1 in 60 falling towards the drainage system and paving height that's always 150mm below the house damp proof course.



## STEP 2: Edge Restraints

When preparing mix, please avoid direct handling of cement, always cover your skin.



Using the cement mixer, mix 1 part cement and 6 parts ballast to create a concrete foundation for the edge restraint that is 100mm thick. Ensure that the edge restraint unit that is to be placed on the foundation will sit at the required finished level using the string line and spirit level.

The edge restraint can either be a kerb unit of a thick paving block (at least 60mm). Mortar these units into the foundation using the trowel and rubber mallet and again using the concrete, form a haunch up at least half the block height.



## STEP 3: The Sub-base

Further to your specific requirements, apply the sub-base of MOT Type 1 with the rake and thoroughly compact using the vibrating plate compactor in layers of 50mm until your desired level is reached.

Apply a 50mm level of slightly damp, coarse sharp sand and compact down, again using the vibrating plate compactor, to an approximate depth of 35mm.



A further 20mm layer of sharp sand then needs to be raked on top and using the screeding rails and string line, levelled to the correct falls.

When using vibrating plate machinery please follow all manufacturer's guidelines including acceptable levels of exposure and in particular use ear protection



## STEP 4 : Installation

Remember when lifting and carrying paving units, always consider the weight before attempting to lift. If it is heavy, take care not to trap your fingers whilst handling the paving units.



Ideally starting from a right angle or straight edge, place your blocks on top of the laying course, ensuring that they sit 5mm proud of the finished level.

Following your desired laying pattern ensure that you pick blocks from three or more different packs at any one time in order to minimise the risk of colour patching.

Once all of the blocks are laid into position you will need to cut a number to complete the area. Cutting blocks is best done using a block splitter or diamond disc cutter. Wherever possible, always obtain water suppression cutting equipment.

When using cutting equipment please follow all manufacturer's guidelines including acceptable levels of exposure and in particular use eye protection.

## STEP 5 : Finishing

Using the yard broom, brush the kiln dried sand into all of the joints and thoroughly compact, again using the vibrating plate compactor, ensuring that all of the blocks are at the desired finished level.



Subsequently top the sand and re-compact to ensure that no joints are left unfilled.



Please note, if you are using the Brett Aura or Classico range of paving blocks the Brett Permeable Chippings need to be applied in this finishing process.

### Hints & Tips

Always keep a bag of kiln dried sand around after you've finished your job, as sand will come out of the joints in the initial life of the area. Regularly top up until it settles in the joints.

## Materials and Tools Checklist

The key to starting off this style of project is the equipment, correct tools and materials for the job and having them all close to hand. Quantities of the following materials will vary depending on the size and sub-base requirements of your patio.

### Materials

- Sub-base MOT Type 1
- Sharp Sand
- Concrete and Mortar
- Brett Kiln Dried Sand
- Block Paving



### Tools

- Trowel
- Pointing Tool
- String Line
- Rubber Mallet
- Screeding Rail
- Spirit Level
- Shovel
- Skip
- Wheelbarrow
- Tape Measure
- Yard Broom
- Vibrating Plate Compactor
- Block Splitter or Diamond Disc Cutter
- Mini Excavator (Optional)
- Cement Mixer (Optional)

Please use Personal Protective Equipment when carrying out this work, such as safety shoes and gloves. Gloves, Safety Goggles, Dust Mask, Ear Defenders, Knee Pads





# Sustainability

Brett Landscaping work hard at improving your environment by providing a wide range of beautiful hard landscaping solutions. However, we also work hard at ensuring that this doesn't come at the cost of the wider environment.

Brett Landscaping are fully committed to managing our impact upon the environment and have a rigorous internal system to back this up.

However, you don't have to take our word for this – most of our commitments are independently audited and reported on annually.

You can find out far more at [www.brettpaving.co.uk](http://www.brettpaving.co.uk)

# Responsible Product Sourcing

Brett Landscaping is committed to a policy of no harm within our supply chains.

We ensure that we achieve this through a number of auditable processes.

1



## Responsible Sourcing

Brett Landscaping was one of the first manufacturers within our sector to achieve certification to the BES 6001 Responsible Sourcing of Construction Products standard which evaluates how well we perform as a business.

A key part of this is that we report annually to all of our stakeholders via our website; if you want to see how well we performed please visit [www.brettpaving.co.uk](http://www.brettpaving.co.uk).

2 CO<sub>2</sub>

## Carbon Reduction

Since 2011 Brett Landscaping has been actively measuring our Carbon usage across all of our hard landscaping products. This commitment ties in to our British Precast Concrete Federation Sustainability Charter pledge to ensure that we reduce our year-on-year Carbon usage thereby ensuring that we minimise our impact upon the World around us.

3



## British Precast Concrete Federation Sustainability Charter

Brett is a signatory to the BPCF sustainability charter. The key value of the Charter is to guide companies towards focusing on the issues that have the greatest impacts on economic viability, social progress and environmental performance in the precast sector.



Some of our products are sourced from outside the UK. In order to ensure ethical trading conditions throughout our supply chain, we have become an active member of the Ethical Trading Initiative (ETI).

We are progressively adopting the ETI Base Code which provides a moral framework for the treatment of workers across the world.

We require all of our suppliers to be aware of and to apply the ETI Base Code to their own suppliers.

[www.ethicaltrade.org](http://www.ethicaltrade.org)

## The Ethical Trading Initiative Base Code

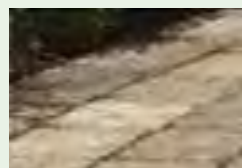
- 1 Employment is freely chosen.
- 2 Freedom of association and the right to collective bargaining are respected.
- 3 Working conditions are safe and hygienic.
- 4 Child labour shall not be used.
- 5 Living wages are paid.
- 6 Working hours are not excessive.
- 7 No discrimination is practiced.
- 8 No harsh or inhumane treatment is allowed.



# Brett and the community

As a responsible manufacturer Brett Landscaping also believe in giving back to the community and will actively support projects with products, time and money.

Over the past few years we have engaged with projects as diverse as the community initiative at Llandaff near Cardiff and supplying product and assistance to their new garden through to the Pipworth Primary School courtyard garden where we supplied block paving so that children from the area could try their hand at being the Brett gardener of tomorrow.



**Llandaff gardens**  
A community initiative sponsored by Brett Landscaping

has enabled residents and local schoolchildren in the Llandaff North area of Cardiff to join forces to nurture an award-winning garden.

Using Brett Alpha Antique Block Paving in Silver Haze and Charcoal, the robust garden features a noticeboard, a seating area to rest and socialise, a paving area for easy access and an array of plants creating beautiful colour and fragrance.

Broxton and Morruzi, a Brett Approved Installer, set the garden up in its final site making it a focal point for the community to enjoy. All part of Brett's community engagement initiative working towards re-engaging communities with their open spaces.



## Pipworth Primary School

An ambitious community project in Sheffield gave a primary school's courtyard a much needed makeover and was made possible with the assistance of Brett Landscaping.

150 volunteers worked at the school for a full day. The team built a new path using Omega Brindle Concrete Block Paving and Golden Gravel from Brett Landscaping, completing the project by adding raised beds and a greenhouse for planting vegetables.



## External certification



### ISO 9001 Quality Management System

BS EN ISO 9001: 2008

Quality Management System ensures consistency of both our product and also service levels ensuring your satisfaction.



### ISO 14001 Environmental Management Systems

BS EN ISO 14001: 2004 Environmental Management System is designed to ensure that we minimise how Brett operations negatively affect the environment and continually improve our performance.



### OHSAS 18001 Health and Safety Management

OHSAS 18001 Health and Safety Management System provides us with a mechanism to provide a demonstrably sound occupational health and safety performance monitoring system for all Brett employees.



All Brett Landscaping products are CE marked to show compliance against the relevant standard. This does more than just provide full compliance with European regulations – it allows you as the consumer to see exactly what you are buying and compare one manufacturers products directly with another in terms of its performance

# Additional Information

Brett is continually looking to make improvements in the product range and therefore any information such as dimensions and weights are subject to change. Customers should always check with a local stockist that they are using the most current product information.

Find your local stockist by visiting [brettpaving.co.uk](http://brettpaving.co.uk) or call 0845 60 80 570.

Colour swatches in this brochure are as accurate as printing allows, however products may vary. This is why we recommend you look at samples and if possible try to see some product laid.

## SUITABILITY

Products which are less than 50mm thick are not suitable to run cars on. Only products of 50mm or more are suitable for driveway installation.

## CONSIDERATIONS FOR CONCRETE PRODUCTS

**Efflorescence:** Efflorescence is a temporary salt residue that can occur on all concrete products in their initial life. The salt masks the colour of the product and is often mistaken for fading. The best course of action is to leave the paved area to weather over time and efflorescence will usually disappear.

**Differential curing:** Dark patches occasionally appear on the surface of garden products. This is known as differential curing and is caused by varying moisture levels within the flag drying at different rates. Like efflorescence, given time and the natural weathering process such patches will tone down and become less visible.

**Porosity:** Concrete continues to cure for many years after manufacture. Whilst this happens, and usually only during its initial life, a level of porosity may exist where some product retains water giving a damp appearance. This will disappear as the concrete continues to harden and the product dries out.

**Aggregate contaminants:** Very rarely concrete may be affected with Iron Pyrites and/or Lignite. These are both the result of naturally occurring constituents within the product raw materials which may result in localised discolouration of the surface of an individual unit. This phenomenon will not normally affect the performance of the product.

**Sealants:** Sealers can help protect and enhance your investment. Before you choose to buy one, make sure you are aware of the following. Sealers may trap potential efflorescence and other forms of discolouration that can occur from time to time, making them almost impossible to remove.

We recommend you wait 12-18 months before sealing. This will allow any potential discolouration to be exposed and enable you to remove it. Before sealing, make sure that the paving is thoroughly cleaned and any joints are filled. Prior to applying to the whole installation, test in a small inconspicuous area.

**Surface marking:** Some products within the range are deliberately distressed via a tumbling process in order to give them their aged aesthetic. Tumbling can leave a dust on the surface of the product that should significantly reduce with the natural ageing process.

The instances mentioned above are not covered under any product guarantee provided by Brett. For more information on any of the topics above, please contact our Customer Services on 0845 60 80 570.

The colours in concrete paving come from pigmentation placed into the product during production. Products may have 2 or 3 different pigments added to create the subtle and very attractive colour tones. When installed these variations appear more uniform over a large area.

**Aged products:** such as Alpha Antique and Aura have been distressed with varying production techniques. The distressing process by its very nature creates a random aesthetic. This variation is deliberate and gives the appeal of the product range.

## ORDERING

To order Brett product contact your nearest Brett stockist, call 0845 60 80 570 or visit [brettpaving.co.uk](http://brettpaving.co.uk)

If samples have been acquired from a Brett stockist, we strongly recommend ordering from the same stockist.

All dimensions quoted in Brett literature are nominal and are for guidance only. Actual sizes of individual units will vary, particularly on garden products. Most sq.m. coverage figures assume a nominal 10mm joint is used between all garden products. If you are having difficulty quantifying the product you require, please call our Customer Services on 0845 60 80 570.

The total quantity required should ideally be ordered and delivered at the same time to reduce the risk of product variation.

## DELIVERY & INSPECTION

In the unlikely event of products arriving in a less than satisfactory condition, please refer to your stockist immediately with product and batch code details that are printed on the packaging.

Any suggestion of non-conformity must result in the complaint being registered and the product not being installed. Responsibility for costs incurred for uplifting and relaying defective product may be prejudiced if the defect should have been apparent before installation.

## PLANNING PERMISSION

Legislation on hard landscaping changes around your property may require a planning application. The responsibility to comply lies with the homeowner.

## HEALTH & SAFETY

Hard landscaping products can be hazardous, especially when lifting, cutting, drilling or abrading. Always carry out a risk assessment and apply the appropriate precautions to help avoid the risk of injury to yourself or others.

## INSTALLATION

Brett products should be installed to relevant European standards where appropriate. Where products fall outside the scope of such standards, Brett best practice installation techniques are recommended. For any queries on installation methods please call our Customer Services on 0845 60 80 570.

Each manufacturing production run of a specific product (or batch) will have its own unique characteristics. Minimising the number of batches will help reduce product variation. Products should be laid from a number of packs at the same time. In the case of paving three packs should be mixed for single colours, five in the case of multi-coloured product. Ideally, product should also be mixed by being taken from vertical stacks rather than in layers of the same pack.

Any garden products supplied may incur joint widths of differing sizes depending on the pattern they are installed in.

We recommend they are dry laid to check the product fits the required area before they are actually bedded. This is also important for circles, octagons and corner kits.

## AFTERCARE

All pavements should be subjected to a regular maintenance regime. For more details on the appropriate course of action, please see the 'Essential Maintenance Guide' on [brettpaving.co.uk](http://brettpaving.co.uk).

Brett Landscaping 115/0114



**Brett Landscaping**  
Sileby Road, Barrow upon Soar,  
Leicestershire LE12 8LX  
Tel 0845 60 80 570  
[www.brettpaving.co.uk](http://www.brettpaving.co.uk)





## Your journey begins here...

Great gardens and dream driveways are just a few small steps away.

So take the first one - pop in to your local builders merchant and ask for Brett.



Call 0845 6080 570 Visit [www.brett paving.co.uk/findastockist](http://www.brett paving.co.uk/findastockist) or scan here