

# 21<sup>ST</sup> CENTURY JEWELRY



THE BEST OF THE  
500 Series

MARTHE LE VAN



GINA PANKOWSKI

*Tighra #3* | 2002

8.5 X 8.5 X 2 CM

18-karat gold; cast, hand fabricated

PHOTO BY DOUGLAS YAPLE

White noise, our mind's mechanism to protect us from auditory overstimulation. This necklace, with its **collection of memories** in the form of objects, symbols, and charms, could be a physical representation in a broader sense—perhaps for meditating on one's experience as you look at and feel the symbols of memory. The noise the piece makes is **soothing** to the wearer, and the weight of the piece creates a sense of **comfort**, a hug from your past. ■ *Gina Pankowski*

Robin Ayres assembles the tiny bits and pieces that accumulate in our junk drawers to create an intriguing, **intimate** necklace. She sorts through generations of minutia, such as trinkets of **sentimental** reminiscences left over from past-life moments. *White Noise* is an old, ghost-like photo holding memories without meaning.

■ *Harriete Estel Berman*

## ROBIN AYRES

*White Noise* | 2005

43.3 X 35.6 X 2.5 CM

Bone, brass and plastic hardware, buttons, celluloid, copper wire, game pieces and prizes, glass beads, ivory, thread winders, pearls, plastic charms, seashells, teeth, toy parts, watch parts, wooden toys

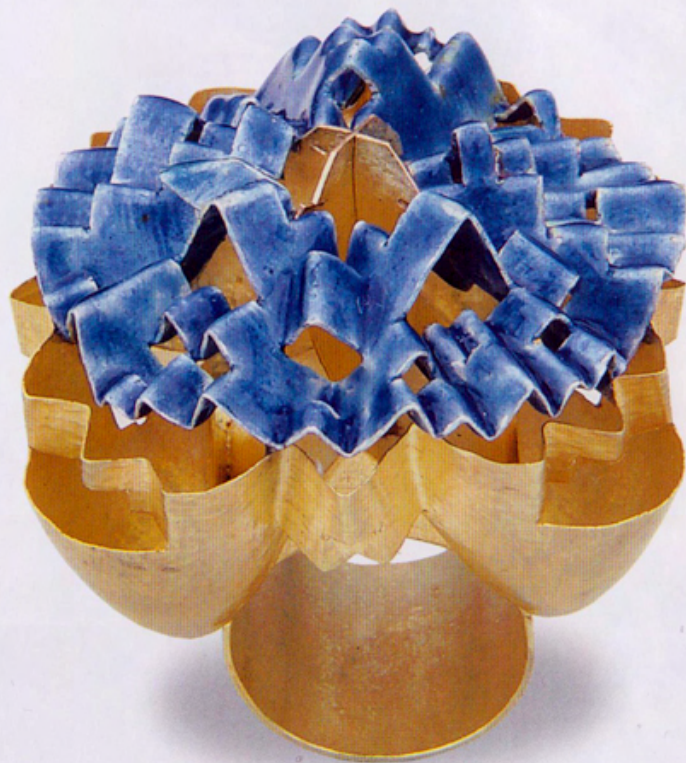
PHOTO BY DAN WALBRIDGE

Beautiful use  
of white material.

■ *Sigurd Bronger*



For me, *Blue Ring* represents the pure freedom of design only accomplished with a mastery of the goldsmith's skills. There is a spontaneity and lightness to this piece. I feel the sense of the gold being raised in the air; the ductility of the metal allowing the piece to be so thin it appears to float. ■ *Gina Pankowski*



**BEATE KLOCKMANN**

*Blue Ring* | 2002

4.5 X 4 X 4 CM

Gold, silver, enamel; hammered,  
milled, folded, soldered

PHOTO BY ARTIST