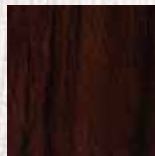




Down
Town
Betty



Downtown Betty

Introducing Bicycle by Downtown Betty...

Bicycle by Downtown Betty is a non-seasonal clothing line for active outdoor people with their finger on the pulse of real life fashion. This hybrid street/beach/yoga line uses soft natural fibres blended with lycra & mixes well with your favourite pieces, or brilliant on their own. Taking you from the yoga studio, to the dinner party, to sunset on the beach.

For people on the go... tread lightly.



“Fashion survival kit”



Convertible

...great as an open back dress with a cowl neck, convertible hood, or worn as a shrug over just about anything.



Dhoti Pant

...these pants kick the pants off track pants. Great for everything from lounging to doing your best dancers pose.

XS, S/M, L, XL

"Clothing that moves with you."



Renegade Tank

...a drapey oversized tank, with a graduated short front/long back & side slashes for sneak peaks & ventilation.

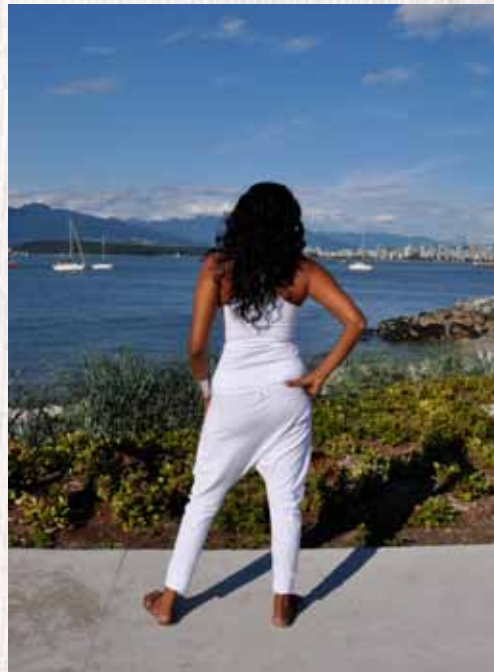
O/S



Long Dhoti Pant

...great for yin practice or wear with your heels for the most comfortable business suit pants on the planet.

XS, S/M, L, XL



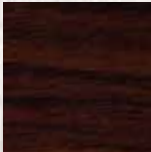


“Uninhibited clothing.”



T-shirt Dress

...from the ashram, worn as a tunic, to sultry seductress, worn as a dress. It is that versatile. Hari om.





The Perfect T

... from yoga to lounging or dressed up with a belt ~ this perfect t is sure to turn heads.



"Feels as good as
naked."



Long Sleeve T-Shirt Dress

...ultra long sleeves, perfect layering
piece to cozy up with tights, leggings
or jeans.



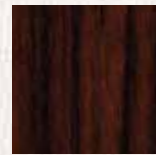
"Casual glamour"



Stable Dress

...a sleeker version of the t-shirt dress, that goes to the knee. Killer with a pair of heels or boots.

XS, S, M, L, XL

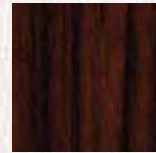




Longsleeve Stable Dress

...the longsleever version of the stable dress ~sleek lines to the knee, tragically hot with boots or heels.

XS, S, M, L, XL





Totem Dress

...worn with sneakers, flip flops or a faux fur stole, this comfy maxi-dress is sure to turn heads.





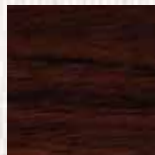
"High Casual"



Ultra Tank Dress

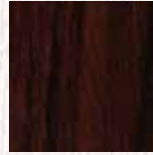
...a sexy curvy longer tank dress with a scoop back to show all of your svelteness off.





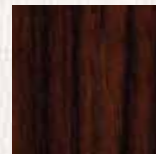
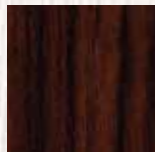
Tank Dress

...fitted above the knee as a dress, or as an ultra long tank with a scoop back, for practice or for play.



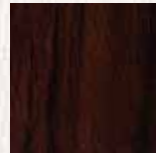
Wave Skirt

...hand cut fringe, easy going layering skirt with no waistband. Wear it short or long, or even as a fringed scarf.



Pow Wow Dress

...a mid-length dress with a fringe neckline & slash back. Whether you are dancing in your living room, on the beach or simply in your heart.



Limited Edition

s.t.a.g. + d.o.e. Kimono

...beautiful summer beach cover up &
also fall/winter/spring layering piece.

100% cotton, vintage style fabric

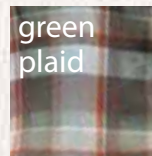


Cabin Plaid Kimono

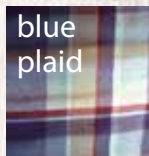
...beautiful fall/winter/spring layering
piece and also a great beach cover up.

100% rayon

green
plaid



blue
plaid





Poncho Hoodie

...finished with a carved wood button, this fool-proof scarf finishes off any outfit and keeps the heart warm after practice.



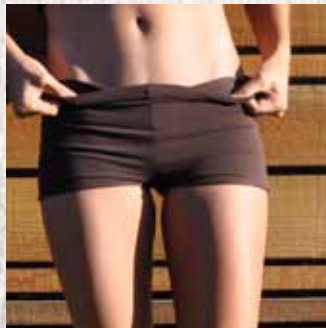
Sweet Tank

...the perfect bra-less tank that works for standing up tall, or standing on your head.

"A fresh, modern earthy colour pallet."

Smokin' Hot Shorts

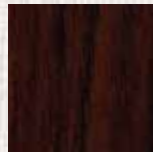
...worn high waisted, or slouched low, these shot shorts are the perfect amount of fabric for hot classes.



Bandeau

...for a little pop of colour, or no-strings-attached support, this tiny bit of fabric goes a long way.





Bindu Band

...a 'unisxy' disguise for bad hair days, aka eryka/axel, also helps channel the flow of energy through your crown chakra.

T-Shirt Dress and Dhoti Pants



Maternity

... due to the flexible nature of the fabric & cuts of the clothing, a lot of our pieces work great before during & after pregnancy & even for nursing.

“For people on the grow ;)”



Mens Sleeveless T

...double seemed shoulders & open neck for breathing room, this T has a tapered body with a contoured hemline.

S, M, L, XL

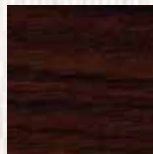


Long Dhoti Pant

...worn bare foot or with biker boots, this long yin pant, can be scrunched up for a 3/4 look.

XS, S/M, L, XL

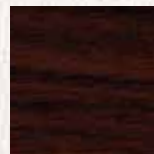
“Clothing for
yogis”



Mens Longsleeve T

...super long sleeves, double seemed
shoulders & open neck for breathing
room.

S, M, L, XL

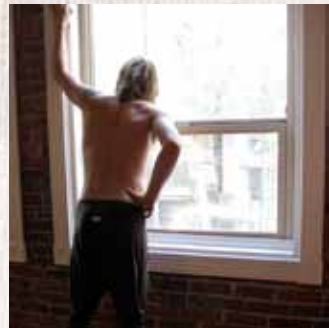
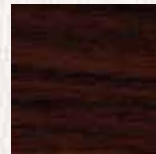




Dhoti Pant

...these pants kick the pants off track pants. Great for everything from lounging to doing your best dancers pose.

XS, S/M, L, XL



About our Fabric

The majority of Bicycle by Downtown Betty is made from medium to light weight mixed natural fibres; either cotton, organic cotton, or bamboo & cotton, with just a touch of spandex for support where needed. This combination feels as good as naked ;)

black

tennis
white

thunder
cloud

chocolate

olive

portobello

indigo

peaches
& cream

geranium

Fabric Colours & Sizing

cotton/lycra, organic cotton/lycra or
bamboo/cotton/lycra
sizes: XS, S/M, L, XL

For Wholesale Enquiries

t: 604 739 1805

e: dearbetty@downtownbetty.com

w: www.downtownbetty.com

You can also find us on:





www.downtownbetty.com