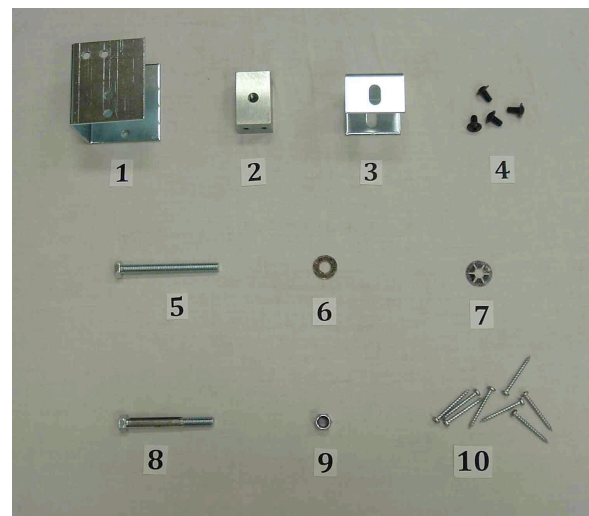


**Instructions for Retrofitting *T.M. Cobb* and *El and El* Pocket Door Frames
(recommended for 2x4 and 2x6 walls)**

The Peterson Pocket Door System has been engineered to function in *T.M. Cobb* (www.tmcobb.com) and *El and El* (www.elandelwoodproducts.com) pre-fabricated pocket door frames. Because the P.P.D.S. will add approximately 4" to the height of the track, a 7'0" frame should be used for 6'8" doors. To accommodate the taller track, adjustments to the valance of the frame must also be made. Before retrofitting the valance please carefully study the parts diagram and follow the instructions provided below.

Parts Diagram



Parts not Included

Pocket door frame unit (including pocket door frame, track, wheels and door guide), self-tapping metal screws, 5/32" allen wrench, and 9/16" socket wrench

Before you Begin

1. Select an oversize pocket door frame

Select a T.M. Cobb pocket door frame unit 4" taller than the height of the door to be installed. A 7'0" pocket door frame should be selected for a standard 6'8" tall door. This extra space is needed to accommodate the P.P.D.S. If a 1 3/4" door is to be installed, it is strongly recommended that a new heavy-duty track and a set of ball bearing wheels be purchased to replace the existing track and wheels.

2. Check the size of the framed rough opening

Ensure that the framed rough opening will accommodate the pocket door frame. The height of the rough opening should be approximately 88" and the width of the rough opening should allow for 1/4" of additional shim space on each side of the unit (this measurement will vary depending on the width of the door.)

Recommended Pocket Door Frame Manufacturer	Height of door	Size of pocket door frame to purchase	Height of rough opening (will vary slightly depending on thickness of finished floor)	Recommended wall thickness
T.M. Cobb	6'8"	7'0" x width of door	88" approx.	2x4 or 2x6
EI and EI	6'8"	7'0" x width of door	88" approx.	2x4 or 2x6

Retrofitting the Pocket Door Unit

1. Attach the adjustable header unit to the pocket door frame

A. Unscrew the track fastened to the pocket door frame and set aside for later use.

B. Fasten the block (part #2) to the adjustable mounting bracket (part #1) with the four machine screws provided (part #4). Study **fig. 1** carefully to ensure that the adjustable mounting bracket is oriented properly and the machine screws are inserted in the correct holes.

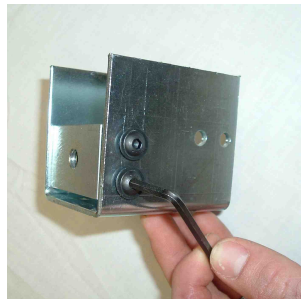


Fig. 1

C. On the pocket door frame, center the adjustable mounting bracket/block assembly on the exposed jamb leg--the jamb leg that *not* be covered with drywall. With the wood screws provided (part #10), fasten the adjustable mounting bracket to the side of the jamb so that the bottom of the bracket is 3 3/4" from the top of the inside of the track cavity (**fig. 2**).



Figure 2

D. Center the 'U' Bracket (part #3) in the jamb leg to be enclosed in drywall and fasten the bracket so that the bottom is 4 1/8" from the top of the track cavity (**fig. 3**)



Figure 3

E. Slide the brass washer (part #6) onto the 3 1/2" bolt (part #5). Run the 3 1/2" bolt through one hole on the end of the hollow square tube. Place the retainer washer (part #7) on the end of the 3 1/2" bolt and run the 3 1/2" bolt through the second hole in the hollow square tube until the brass washer and the lock washer seat firmly on the inside and outside edge of the hollow square tube (**fig 4**).

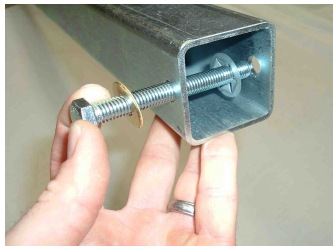


Figure 4

F. Align the holes in the opposite end of the hollow square tube with the holes in the mounted 'U' bracket (part #3). Once aligned, slide the 3" bolt (part #8) through the 'U' bracket and the hollow square tube. Apply the nylon nut (part #9) to the 3" bolt and tighten with a 9/16" wrench. *Do not over tighten the nylon nut. The hollow square tube must easily pivot on the 'U' bracket to function properly* (**fig 5**).



Figure 5

G. Pivot the hollow square tube up to the adjustable mounting bracket/block assembly. Thread the 3 1/2" bolt into the hole in the block (**fig 6**).



Figure 6

2. Retrofitting the track

A. Locate the track removed from the pocket door unit or, if using a 1 3/4" door, the heavy-duty track purchased separately. Cut a 45 degree angle on the exposed end of the track to allow the wheels to be removed from the track after installation. Place the track on the mounted hollow square tube and mark the location of the head of the 3 1/2" bolt. Drill a 1" hole in the track to allow access to the bolt (**fig 7**).



Figure 7

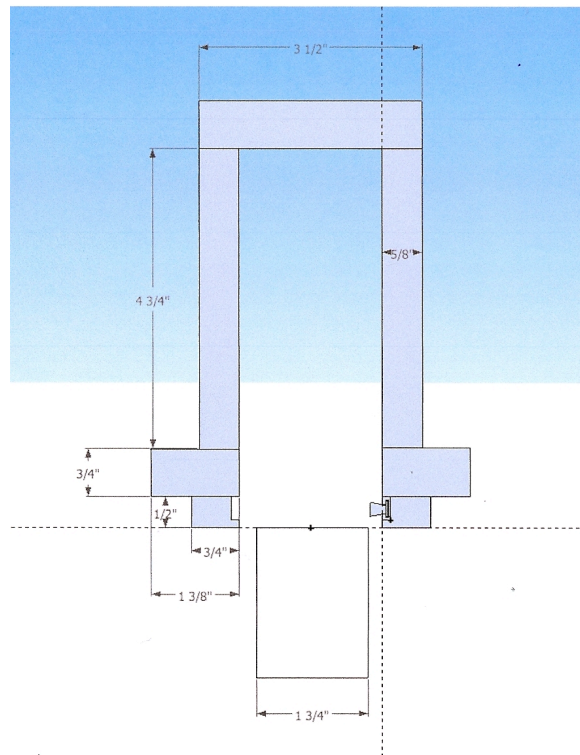
B. Center the track on the hollow square tube and mark the location of the holes in the track on the tube. Drill adequate holes in the hollow square tube on these marks. Use self-tapping metal screws (not included) to attach the track (**fig 8**).



Figure 8

3. Retrofitting the Pocket Door Frame

Once the P.P.D.S. has been installed in the pocket door frame, the valance of the pocket door frame must be retrofitted to cover the track and provide backing for drywall. For the best results, please study the diagram of a cross section of the valance below.



A. To increase the depth of the valance in the existing pocket door frame, carefully remove the 3/4" x 1 3/4" horizontal trim pieces (size may vary) attached to the valance frame. Set these pieces aside for later use. Do not remove vertical trim pieces (**fig. 9**).

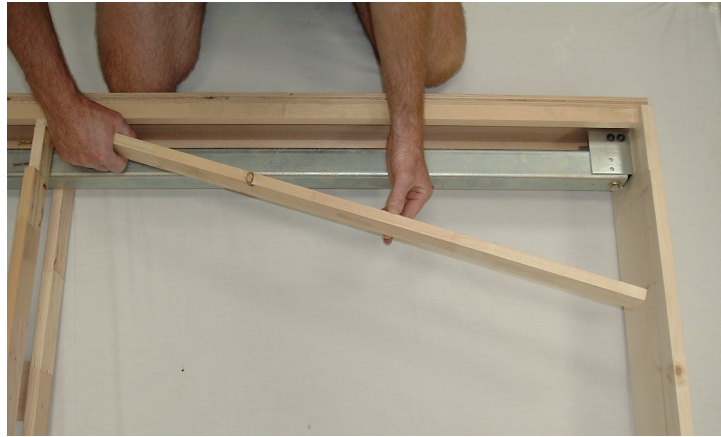


Figure 9

B. On both sides, secure a new 3/4" x 3 3/4" piece of trim under the bottom edge of the 1 3/4" trim piece (**fig. 10**).



Figure 10

C. Reattach the 3/4" x 1 3/4" trim pieces to the bottom edges of the 3/4" x 3 3/4" pieces (**figure 11**).



Figure 11

D. To accommodate for drywall, notch the upper portion of the exposed jamb leg (**fig. 12**) and the vertical trim pieces (**fig. 13**)



Figure 12



Figure 13

Installing the Pocket Door Unit

1. Install the pocket door frame

- A. Install the retrofitted pocket door frame in the rough opening, carefully leveling the sides and top of the frame.
- B. Level the track using a 9/16" socket wrench to turn the exposed head of the 3 1/2" bolt.
- C. Attach the rollers to the door, place the door on the track, and check the track for adjustability.

2. Install the 1/2" x 3/4" finish trim

Once the door has been installed 1/2 x 3/4" finish trim may be nailed on to the 3/4" trim installed around the valance and door opening. To fill the gap between the edge of the 1/2" x 3/4" trim and

the door a slim mole hair brush (*Pemko 369AP*) may also installed.

Installation instructions for double door units

To use the Peterson Pocket Door System in double door applications purchase two Peterson Pocket Door System units and a pocket door frame designed for a pair of doors.

1. Remove the tracks from the pocket door frame and set aside for later use.
2. With the four machine screws (part #4) provided, fasten the block (part #2) to the adjustable mounting bracket (part #1) using the appropriate holes. Note: double door applications require that screws align with different holes than those used in single door applications. Study fig. 14 carefully to ensure that the machine screws are inserted in the proper holes. Repeat this step with the second block and mounting bracket.

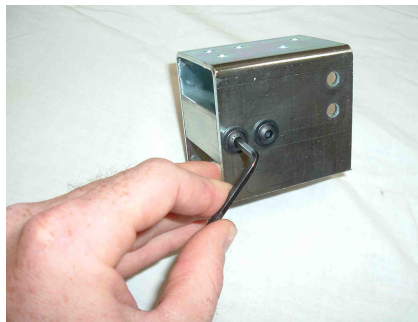


FIG. 14

3. Center both adjustable mounting bracket/block assemblies side by side in the middle of the track cavity. Fasten the adjustable mounting bracket using the wood screws (part #10) provided (fig. 15).



FIG. 15

4. Follow single door instructions repeating steps when necessary for the second track. Note: when modifying a pair of tracks, a 22 ½ degree angle can be cut on the end of the track rather than a 45 degree angle.