

Tripod Adapter (Type A) for Pole Series 1 and Series 2

FANOTEC Nodal Ninja

Quick Reference Guide

Revised: 7 July 2012

© 2012 Nodal Ninja

Support: www.nodalninja.com/forum
Tutorials: www.youtube.com/nodalninja
Store: store.nodalninja.com



Tripod Adapter for Use with Fanotec Poles

This adapter allows using a rigid tripod to support Fanotec Poles Series 1 and 2. It spreads the bending torque to a long distance of tripod center column and pole, thereby reducing the risk of damaging the tripod top plate, the rotator or the pole base.

The tripod adapter with a rigid tripod will greatly stabilize the pole, making it ideal for long exposure and HDR photography. Users will have greater reassurance against wavering pole when shooting around crowds or in windy situations.

An optional guy wire system can be used to further stabilize the pole for heavy loading, or in strong winds or when very long exposure is needed.

Note that the bending torque can be greatly amplified when using a long pole. Use only a rigid tripod with tripod adapter to support a Fanotec pole.

EXHIBIT CAUTION WHEN USING POLES AROUND PEOPLE AND ELECTRICAL WIRES.

Package Contents of Tripod Adapter (Type A)

 Upper Adapter	 Lower Adapter		Spare Parts	
				Qty
			4mm hex key	1
			3/16" hex key	1
			3/8" x 1.25" stud	1

Prerequisites of using Tripod Adapter (Type A)



- ✦ Tripod must have a 3/8" male or female thread at the base of center column.
- ✦ Tripod must have a shoulder plate radius **less than 54mm / 2.1"**.
- ✦ A Fanotec rotator or a 3/8" to M6 internal thread reducer must be used.

Installing Tripod Adapter to Tripod Center Column



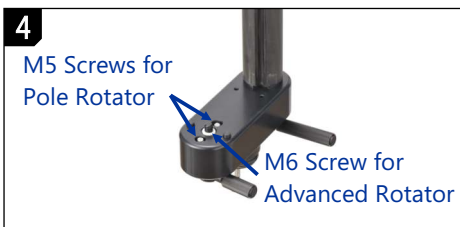
Use a hex key to install the 3/8" x 1.25" stud on the tripod adapter if the tripod center column has a 3/8" socket at the base. Tighten it fully to prevent loosening.



Remove any accessories from center column to reveal the 3/8" socket. Some parts can be stowed at the bottom of the lower adapter. Set up tripod at its shortest extension.



Install the lower tripod adapter to the base of center column. Adjust its position so that it is evenly spaced from 2 tripod legs. Hold the adapter and tighten the knob slowly to avoid twisting. Then tighten the knob fully.



Align and place a Fanotec rotator on the adapter. Tighten the rotator by either using 2 M5 screws or the M6 screw knob. When a motorized rotator is used atop a pole, the pole can be mounted directly to the adapter. Skip this step and go to **Step 4A**.



To use a Pole 1 or a Pole 2 upper unit on the adapter, the Pole 2 to Pole 1 Fitting must be installed. To use a Pole 2 lower / complete unit on the adapter, the fitting (if any) must be removed. See **Step 5A & B** for instructions on installing / removing the fitting.



Install the upper tripod adapter on top of tripod center column. Tighten its top knob very gently so that it can be twisted freely to align with the lower adapter.



Install a 3/8" x 3/4" stud (from the pole package) at the base of pole using the included hex key, except when a Pole Rotator is mounted on the lower adapter, or when a motorized rotator is to be used atop a pole. Tighten the stud fully to prevent loosening.



Loosen the handle at the side. Insert the pole into the upper adapter. For Pole 1 and Pole 2 upper unit, the base cap must be first removed, then reinstalled after inserted the pole into the adapter.



Slowly lower the pole while holding the base with one hand. Twist the upper adapter to align for the 3/8" thread on the rotator. Then carefully tighten the pole to the rotator. When a motorized rotator is used, skip this step and go to **Step 9A**.



Tighten the knob at the side of upper adapter. This will align the upper and lower adapters. Hold the upper adapter and slowly tighten the top mounting knob to prevent twisting. Use the upper adapter as pivot to fully tighten the knob.



Mount the pano head and camera with remote control atop the pole. Carefully extend the tripod legs to 50-80% extension, depending on how much rigidity is needed.

Level the pole by adjusting the tripod legs. Carefully raise up the pole. When everything is done, loosen the side knob slightly so that the pole can be rotated smoothly with just enough friction to stabilize the pole.

NEVER LEAVE POLE UNATTENDED. UNEVEN SURFACES OR WINDS MAY CAUSE LEANING AND/OR FALLING OF EQUIPMENT!

Step 4A: Using a Motorized Rotator with Tripod Adapter



Install an optional 3/8" to M6 internal thread reducer to the base of pole using a screw driver or a coin. Tighten it fully to prevent loosening. Remove the rubber O-rings at the base of pole. Then continue to **Step 5**.

Step 5A & B: Installing and Removing Pole 2 to Pole 1 Fitting



To use Pole 1 or Pole 2 upper unit on tripod adapter, the fitting must be installed. Loosen the side knob. With the flange facing up, squeeze and push the fitting into the adapter. The fitting should snap in place. Then continue to **Step 6**.



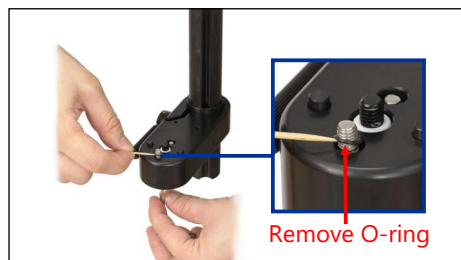
To use Pole 2 lower unit on tripod adapter, the fitting (if any) must be removed. Loosen the side knob. With the flange facing down, squeeze and push the fitting out of the adapter. Then continue to **Step 6**.

Step 9A: Using a Motorized Rotator with Tripod Adapter



Slowly lower the pole while holding the base with one hand. Twist the upper adapter and rotate the pole to align for the anti-twisting pins on the lower adapter. Then tighten the pole to the adapter using the central M6 screw knob. Then continue to **Step 10**.

Removing Unused Screws from Tripod Adapter



The screws are made captive by using rubber O-rings. If only one type of screw will be used, the unused one(s) can be removed. Simply pull the M6 screw knob downward to remove it. Use a hex key to push the M5 screw up. Use a toothpick or similar to remove the O-ring. Then the screw will come off with hex key.