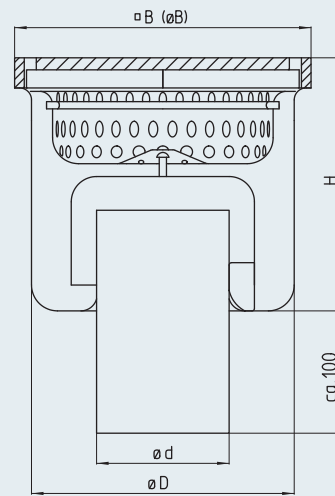


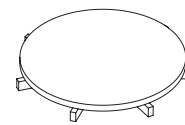
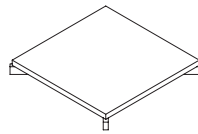
# Industrial floor drain – single-part DRS-S DRSK-S – vertical



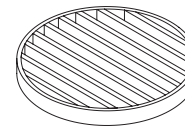
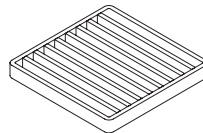
Model	DN	$\varnothing d$ [mm]	$\varnothing B$ [mm]	$\varnothing B$ [mm]	$\varnothing D$ [mm]	H [mm]	Silt box volume [ l ]	Flow rate [ l/s ]	Fire protection <sup>3)</sup> (optional)
DRS-070-E-S	70	75	180	-	153	127	0.5	> 1.5	-
DRS-070-RD-S	70	75	-	196	153	127	0.5	> 1.5	-
DRS-100-E-S	100	110	246	-	218	210	1.5	> 2.8	R 90
DRS-100-RD-S	100	110	-	270	218	210	1.5	> 2.8	R 90
DRS-150-E-S	150	160	310	-	283	250	2.75	> 8.2	-
DRS-150-RD-S	150	160	-	331	283	250	2.75	> 8.2	-
DRS-200-E-S	200	200	410	-	356	315	6	> 12.5	-
DRS-200-RD-S	200	200	-	410	356	315	6	> 12.5	-
DRSK-100-E-S <sup>17)</sup>	100	110	200	-	183	175	0.65	> 2.8	-
DRSK-100-RD-S <sup>17)</sup>	100	110	-	235	183	175	0.65	> 2.8	-

## Cover variants<sup>2)</sup>

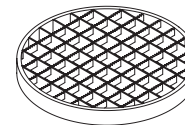
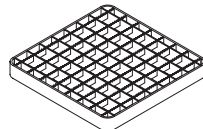
- Plate cover, M125



- Bar grate cover, M125



- Grating, L15



- Plate 5 mm, not illustrated. L15

- Plate 3 mm, hole  $\varnothing$  8 mm, not illustrated, K3

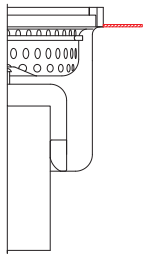
## Inlet rim

- square
- round

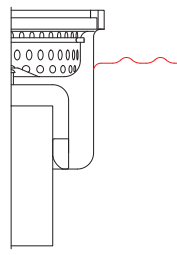
## Grade

- 1.4301 (AISI 304)
- 1.4571 (AISI 316 Ti)<sup>1)</sup>

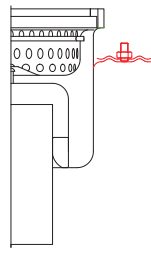
**Flange variants (optional)<sup>4)</sup>**



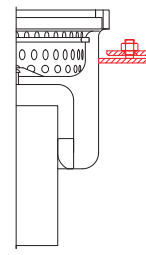
**HF**  
Bonding flange  
**AF**  
Attachment flange



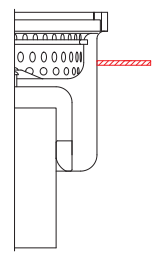
**KBF**  
Adhesive flange



**KMF**  
Clamping flange

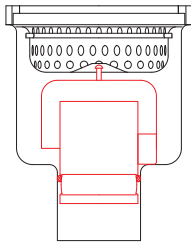


**FDIN**  
Clamping flange according to  
DIN 1819559

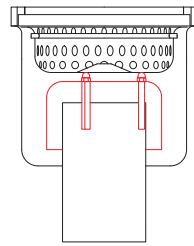


**TGF**  
Support flange

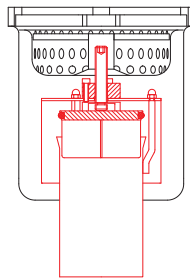
**Supplementary equipment (optional)**



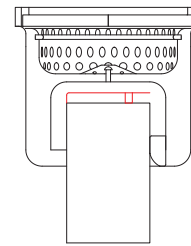
**GVS**  
Air trap, plug-in



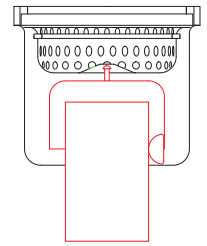
**GVV**  
Air trap, bolted



**AS<sup>14)</sup>**  
Air trap,  
lockable



**SBV** Sieve plate, bolted  
**SBS** Sieve plate, plug-in  
**SBE** Sieve plate, welded



**BS<sup>3)</sup>**  
Fire protection

**Description for use in tenders**

Industrial floor drain, single-part, Model DRS, according to EN 1253. Inlet rim solid 25 x 8 mm. To achieve a high self-cleansing effect, the bottom of the housing has large and deep-drawn inside radii. Stainless steel air trap and perforated plate silt box. Vertical drain necks. Surface blasted with glass beads/pickled.

Nominal width:	• DN 70	• DN 100	• DN 150	• DN 200
Grade:	• 1.4301 [AISI 304]		• 1.4571 [AISI 316 Ti] <sup>1)</sup>	
Cover:	• Plate cover, M125 • Grating MW25 Support rod 2/RH		• Bar grate cover, M125 • Grating MW25 Support rod 25/3RH	
Inlet rim:	• square		• round	
Flange variants:	• Attachment flange • Bonding flange		• Bonded flange, t = 1.5 mm • Clamping flange, t = 1.5 mm	
Air trap:	• Integral and lapped flange conform with DIN 18195 T9, t = 6 mm • Support flange			
Silt box:	• with plug-in air trap • welded standpipe with screwed air trap • removable standpipe with air trap • welded standpipe, lockable with mandril			
Fire protection:	• Silt box with overflow slits			
	• R90	• R120		

We will be pleased to provide a description for specific objects for use in tenders.

<sup>1)</sup> If grade 1.4571 is used (AISI 316Ti) some components may be made of grade 1.4404 (AISI 316) for construction reasons <sup>2)</sup> for other covers and explanations see the page on cover variants <sup>3)</sup> Installation conditions for fire protection on request <sup>4)</sup> For explanations see page on flange variants <sup>14)</sup> H dimension changes. Not all options available