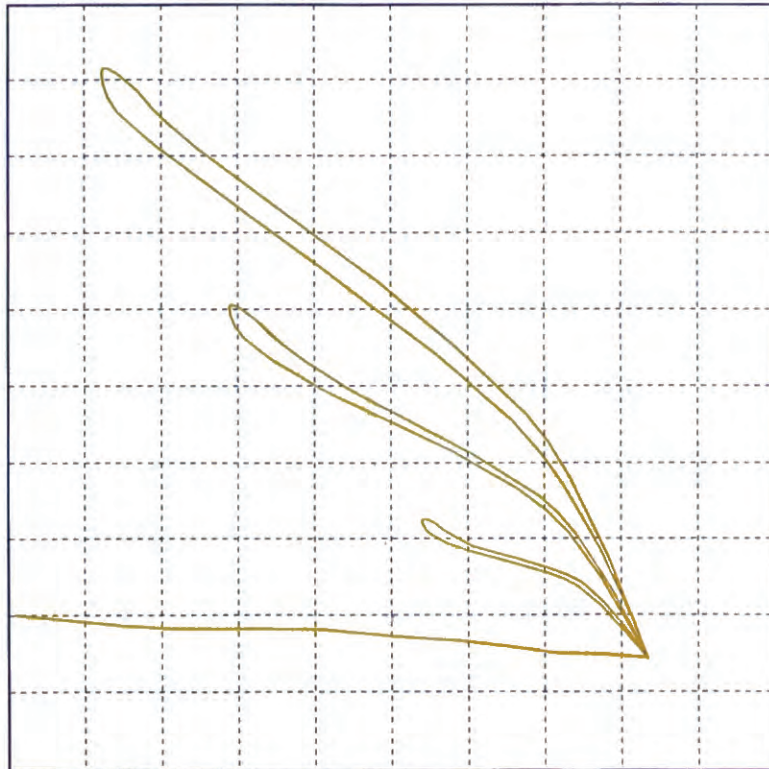




EC  ***NDT*** LLC

***Specialists In Eddy Current Probes
&
Reference Standards***



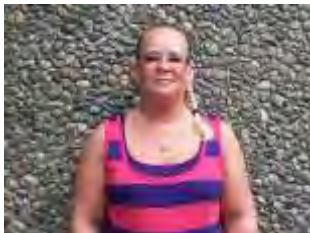
When Only The Best Will Do



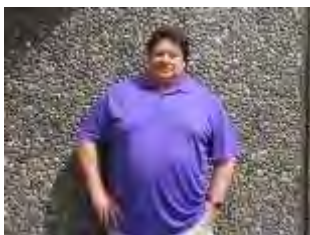
CONTACT INFORMATION:

**ADDRESS: 1020 S. 344TH ST., SUITE 214
FEDERAL WAY, WASHINGTON 98003
PHONE: 253-815-0797
TOLL FREE: 877-565-0797
FAX: 253-815-0827
EMAIL: EC-NDT@ATT.NET
WEBSITE: WWW.EC-NDT.COM**

**SALES & GENERAL INFORMATION:
CARRIE SCHROEDER, GENERAL MANAGER
24 HOUR PHONE: 253-330-9264**



**RESEARCH & DEVELOPMENT:
RICHARD PETTER, PRESIDENT
24 HOUR PHONE: 253-951-5948**





“THE HIGHEST QUALITY AND MOST DURABLE EDDY CURRENT PROBES GUARANTEED”

- ✚ **PRICING: COMPETITIVE PRICING, WE WILL MEET OR BEAT ANY PRICE.**
- ✚ **DELIVERY: FASTER DELIVERY, WHEN YOU NEED IT WE WILL GET IT DONE.**
- ✚ **RESEARCH & DEVELOPMENT: SPECIALTY DESIGNS (WIDE FIELD, MICRO-MINUTURE, AND ARRAY SENSORS.)**
- ✚ **REPAIR/REPLACE & RE-CERTIFICATIONS: ALL MANUFACTURERS PROBES, CABLES, ADAPTERS AND STANDARDS.**
- ✚ **HUNDREDS OF PROBE KITS AND THOUSANDS OF PROBES TO CHOOSE FROM**

EC-NDT@ATT.NET

TOLL FREE: 1-877-565-0797

PHONE: 253-815-0797

FAX: 253-815-0827

www.ec-ndt.com



PRODUCT LINE:

EDDY CURRENT PROBES:

Adjustable Bolt Hole Probes
Manual Bolt Hole Probes
All Types of Scanner Probes
Pencil Probes
Sliding Probes
Spot Probes
Ring Probes
Wheel Probes

PROBE KITS AVAILABLE FOR ALL AIRCRAFTS:

REFERENCE STANDARDS:

Eddy Current & Ultrasonic
Boeing-Lockheed-Airbus
Pratt & Whitney-Bell Helicopter
General Electric

INTERCONNECTING CABLES & ADAPTERS:

Eddy Current & Ultrasonic

RESEARCH & DEVELOPMENT – SPECIAL DESIGNS –

NEW AND USED ET AND UT EQUIPEMENT

REPAIR/REPLACE ALL MANUFACTURERS PRODUCTS!!!!

SAVE UPTO 75% ON COST OF NEW/REPAIR

Compare our Quality, Price & Delivery
Longer Lasting, Better Sensitivity

100% Guaranteed or it's on us!



“GENERAL PURPOSE” EDDY CURRENT PROBE KITS

THE LAST AND ONLY PROBE KIT YOU WILL EVER NEED!

- ✚ Titanium wear surface for extended durability and life.
- ✚ Every size, shape, form, fit, and function probe you will need.
- ✚ Certified and Calibrated for use on Aluminum, Steel, and Titanium. Also available in Stainless Steel, Magnesium, Inconel and etc.....
- ✚ The highest sensitivity and lowest noise ratio available.
- ✚ A multitude array of frequency ranges.
- ✚ Compatible for all Eddy Current testers.



“WHEN ONLY THE VERY BEST WILL DO “

Company Information

EC/NDT is pleased to be a Leader in the world market of non-destructive inspection. At EC/NDT, our vision is providing technically superior products for all of our customers at competitive prices.

With over 25 years of experience in research and development, production qualification and quality control, we will strive to set the market pace for innovation and quality. At EC/NDT we listen intently to our customer’s needs and requirements. Each probe is custom hand-made, one at a time, to precise specifications. Each probe is guaranteed for quality, performance, and reliability. We take great pride in our craftsmanship.

Our commitment to customer service is unmatched due to our dedicated long term staff. Our Sales Manager is on call 24/7 to answer your calls and provide 24 hour turn around on quotes and inquiries. Production deadlines are met, and products are delivered on schedule. We look forward to serving you. At EC/NDT, “we turn the impossible into reality.”

We also want to extend our gratitude to our loyal customers and look forward to doing business with new customers. We embrace all input for the future of NDI.

Richard Petter

Richard Petter, Founder and CCO



PROBE GUIDE:

- **Scanner Bolt Hole Probes**
- **Scanner Countersink Probes**
- **HF Surface Probes**
- **Manual Bolt Hole Probes**
- **LF Spot Probes**
- **Molded Probes (Wheel Probes)**
- **Sliding Probes**
- **Blade Probes**
- **Finger Probes**
- **Spring Loaded Probes**
- **Delrin Surface Probes**
- **Specialty Items**
- **Adaptors**
- **Cables**
- **Reference Standards**



Contents

CONTACT INFORMATION:.....	1
“THE HIGHEST QUALITY AND MOST DURABLE EDDY CURRENT PROBES GUARANTEED”	2
PRODUCT LINE:	3
“GENERAL PURPOSE” EDDY CURRENT PROBE KITS.....	4
Company Information.....	5
PROBE GUIDE:.....	6
WARRANTY:.....	8
HOW TO HANDLE DAMAGES AND SHORTAGES:.....	9
INTRODUCTION:.....	10
SIZING TABLE:	11
SCANNER PROBES:.....	12
SCANNER PROBES CONTINUED:.....	13
SCANNER COUNTERSINK PROBES:	14
SCANNER COUNTERSINK PROBES CONTINUED:.....	15
HF SURFACE PROBE:	16
HF SURFACE PROBES CONTINUED:	17
MANUAL BOLT HOLE PROBES:	18
LF SPOT PROBES:.....	19
LF RING PROBES:.....	20
MOLDED PROBES (WHEEL PROBES):.....	21
SLIDING PROBES:	22
BLADE PROBES:.....	23
FINGER PROBES:	24
SPRING LOADED PROBES:	25
DELRIN SURFACE PROBES:	26
SPECIALTY ITEMS:	27
NOTES:.....	28



WARRANTY:

All Products manufactured and sold by EC/NDT will be warranted for manufacturing defects.

Wear, user damage, material deterioration and other defects caused by improper use of the operator are not covered by warranty.

If, however the above excluded conditions are related to the manufacturing process, design or materials used the item will be replaced under warranty. Replaced items will be delivered under full warranty.

A one-year warranty is applicable for all Eddy current probes, adapters, cables and reference standards. For repairs the warranty period is 6 months.

Customer will pay all shipping charges and duties if applicable from their facility to EC/NDT located at 1020 S. 344th St., Suite 214 Federal Way, WA 98003. USA

EC/NDT will cover the return costs via economical ways to the customer's facilities. Shipping may take no longer than 10 days excluding the delays caused by the forwarder or customs, which were unforeseen at time of shipping.

IMPORTANT INFORMATION:

Under U.S. Shipping regulations, damage claims must be collected by the consignee. Do not return shipping damaged merchandise until after your claim has been established.

The carrier who delivers merchandise to your door is responsible for loss and damages. Acceptance of the shipment by the Transportation Company is acknowledgement that the articles received by them were in good condition and properly packed.

All claims for loss or damaged products should be filed immediately with the Transportation Company making delivery to your door. Then notify us, we will mark our records accordingly. Should you need assistance with the claim, we will be happy to help.



HOW TO HANDLE DAMAGES AND SHORTAGES:

VISIBLE DAMAGE:

1. Have delivery driver note on Freight bill the nature and extent of the damages.
2. Notify the Transportation Company's office to inspect the merchandise.
3. File claim for damages at once. In filing the claim with the Transportation Company, you may (a) make a cash adjustment for full value, (b) arrange to have repairs made, or (c) replace the merchandise.

CONCEALED DAMAGE:

1. If damage is noticed when merchandise is unpacked notify the Transportation Company immediately and ask them to have it inspected.
2. Do not destroy packing materials until shipment is inspected and claim is settled.

SHORTAGES:

1. All shortages must be reported within 10 days.
2. Check the number of cartons delivered with the quantity shown on receipt.
3. If quantities do not tally, have driver note shortages and if missing items do not show up in a few days, advise us and we will investigate and replace if error is ours.

RETURN GOODS CANNOT BE RETURNED WITHOUT WRITTEN AUTHORITY.

Call, email, or write for a RMA authorization. All shipments not having prior authorization will be refused. All shipments returned for credit or exchange when the error is not ours will be subject to a re-stocking charge and material must be returned prepaid.



INTRODUCTION:

Every section in this probe guide starts with a short description of the eddy current products available from EC/NDT. This section gives a short description on how the probe identification is built up. Each eddy current probe available from EC/NDT has a unique code. These codes can be used to order the desired probe configuration. When ordering always indicate the instrument to be used, and preferred connector type. In the last subsection of each section-which always says **“HOW TO ORDER”**- the product part number formats and some typical probe designs are listed.

ORDER EXPAMPLE:

Suppose a stainless shielded Rohmann mini rotor gun with a diameter of 4.8mm and a working length of 35mm is needed.

- You need to go to chapter **“Scanner Probes”**, section **“Scanner Bolt Hole Probes”**, and page 2.
- Lookup in the first table **“probe type”**, and get the code for a stainless steel scanner probe which is **SS**.
- Lookup in the next table **“Equipment manufacturer”**, and get the code for the probe, which is in this case for a **Rohmann Probe = 3**.
- Go to the next table **“Scanner Model”**, where you can find **Rohmann mini = 1**.
- Work your way through the list of tables. Your code should now read:

SS310/4.8/35mm

Notice that the **mm** after the part number is because we specified the probe dimensions in metric form.

In the case if you want to specify the diameter in a range, say between 6.5mm and 7mm, just write down the range in its specific field, e.g.:

SS312/6.5-7mm

This is the part number for a Delrin Rohmann mini rotor gun with a self-expanding head and a diameter range between 6.5mm and 7mm.

All orders can be placed with EC/NDT or via your local re-selling agent world-wide. For more information on our worldwide distribution network please contact EC/NDT.



SIZING TABLE:

SIZE	FRACTION (")	DECIMALS (")	MILLIMETERS	SIZE	FRACTION (")	DECIMALS (")	MILLIMETERS
1	1/64	.0156	0.396	33	33/64	.5156	13.096
2	1/32	.0312	0.793	34	17/32	.5312	13.493
3	3/64	.0468	1.190	35	35/64	.5468	13.890
4	1/16	.0626	1.587	36	9/16	.5625	14.287
5	5/64	.0781	1.984	37	37/64	.5781	14.684
6	3/32	.0937	2.381	38	19/32	.5937	15.081
7	7/64	.1093	2.778	39	39/64	.6093	15.478
8	1/8	.125	3.175	40	5/8	.625	15.875
9	9/64	.1406	3.571	41	41/64	.6406	16.271
10	5/32	.1562	3.968	42	21/32	.6562	16.668
11	11/64	.1718	4.365	43	43/64	.6718	17.065
12	3/16	.1875	4.762	44	11/16	.6875	17.462
13	13/64	.2031	5.159	45	45/64	.7031	17.859
14	7/32	.2187	5.556	46	23/32	.7187	18.256
15	15/64	.2343	5.953	47	47/64	.7343	18.653
16	¼	.250	6.350	48	3/4	.750	19.050
17	17/64	.2656	6.746	49	49/64	.7556	19.446
18	9/32	.2812	7.143	50	25/32	.7812	19.843
19	19/64	.2968	7.540	51	51/64	.7968	20.240
20	5/16	.3125	7.937	52	13/16	.8125	20.637
21	21/64	.3281	8.334	53	53/64	.8281	21.034
22	11/32	.3437	8.731	54	27/32	.8437	21.431
23	23/64	.3593	9.128	55	55/64	.8593	21.828
24	3/8	.375	9.525	56	7/8	.875	22.225
25	25/64	.3906	9.921	57	57/64	.8906	22.621
26	13/32	.4062	10.318	58	29/32	.9062	23.018
27	27/64	.4218	10.715	59	59/64	.9218	23.415
28	7/16	.4375	11.112	60	15/16	.9375	23.812
29	29/64	.4531	11.509	61	61/64	.9531	24.209
30	15/32	.4687	11.906	62	31/32	.9687	24.606
31	31/64	.4843	12.303	63	63/64	.9843	25.003
32	1/2	.500	12.700	64	1.0	1.0	25.4



SCANNER PROBES:

Scanner Probes are eddy current probes to be used in combination with a rotating gun, which is attached to an eddy current instrument. High speed testing of bolt-holes, counter bores, the hole perimeter or around fastener heads are typically applications for these types of probes. Several designs and materials are possible depending on the application the probes are used in.

EC/NDT has many different designs available for all rotating guns available on the market. If a standard design does not fit your application we will manufacture a probe according to your requirements.

SCANNER BOLT HOLE PROBES:

Bolt hole probes are used to scan the inside of a bore for cracks. Many different designs and coil types are available to meet your inspection requirements.

PROBE CONFIGURATION:

- Probe Type:**

Scanner Probe (plastic design)	S
Stainless steel scanner probe	SS
For unshielded design of the above probes, add U	SU, SSU
For flexible shaft design probes, add FX	FX is placed at end of part number

- Equipment manufacturer and scanner model:

EQUIPMENT MANUFACTURER		SCANNER MODEL	
Nortec	0	Nortec RA	0
		Nortec RA2	1
		Nortec PS2/3	2
		Nortec PS4	4
		Nortec PS5	5
Zetec	1	Zetec standard	0
Rohmann	3	Rohmann standard	0
		Rohmann mini	1
Foerster	4	Foerster standard	0
		Foerster mini	1
Hocking	5	Hocking mini	1
Universal	0	Universal mini	6

NOTE: Please call EC/NDT if equipment is not listed above.

EC-NDT@att.net • Phone: (253) 815-0797 • Toll free: 877-565-0797 • Fax: (253) 815-0827 •
www.ec-ndt.com • 1020 S. 344th St., Suite 214 Federal, Washington 98003 • USA



SCANNER PROBES CONTINUED:

- **Coil:**

Differential	D
Reflection	R
Absolute	A
Absolute Reflection	AR
Absolute Bridge	AB

Default Coil Types:

Nortec PS2/3	Differential
Nortec RA, RA2, PS4, PS5	Reflection
Zetec default	Differential
Rohmann default	Reflection
Foerster default	Reflection
Hocking default	Reflection
Universal default	Reflection

- **Probe model (Head Style):**

Solid	0
Split End	1
Self-Expanding	2
Screw Adjustable	3
Collar Adjustable Shaft	4

- **Diameter:**

Default in inches, See table 1 For metric add mm to end of part number

- **Working Length:**

DEFAULT = 2 INCHES or in case of metric = 50mm Indicate required length if not default in inches or mm	Ex: /6WL
--	----------

- **Frequency:**

Probe frequency, either fixed or range	Default is 100KHz-1MHz
--	------------------------

NOTE: Please call EC/NDT if equipment is not listed above.



SCANNER COUNTERSINK PROBES:

Scanner countersink probes are used to scan the countersink area of a bore for cracks. Many different designs and coil types are available to meet your inspection requirements.

PROBE CONFIGURATION:

- Probe Type:**

Scanner Probe (Plastic design)	SC
Stainless Steel Scanner Probe	SSC
For Unshielded design of above probes, add U	SCU, SSCU

- Equipment manufacture and Scanner model:**

EQUIPMENT MANUFACTURER		SCANNER MODEL	
Nortec	0	Nortec RA	0
		Nortec RA2	1
		Nortec PS2/3	2
		Nortec PS4	4
		Nortec PS5	5
Zetec	1	Zetec standard	0
Rohmann	3	Rohmann standard	0
		Rohmann mini	1
Foerster	4	Foerster standard	0
		Foerster mini	1
Hocking	5	Hocking mini	1
Universal	0	Universal mini	6

- Coil Type:**

Differential	D
Reflection	R
Absolute	A
Absolute Reflection	AR
Absolute Bridge	AB

NOTE: Please call EC/NDT if equipment is not listed above.



SCANNER COUNTERSINK PROBES CONTINUED:

- **Default Coil Types:**

Nortec PS/3	Differential
Nortec RA, RA2, PS4, PS5	Reflection
Zetec default	Differential
Rohmann default	Reflection
Foerster default	Reflection
Hocking default	Reflection
Universal default	Reflection

- **Angle:**

Standard (degree)	100
We custom any degree.....call for information	

- **Diameter:**

Default = 2 inches or in case of metric = 50mm
--

- **Frequency:**

Probe Frequency, either fixed or range, we accommodate to the inspection
--

NOTE: Please call EC/NDT if equipment is not listed above.



HF SURFACE PROBE:

High Frequency surface probes (Pencil Probes) are available in various shielded or unshielded designs and frequencies. These probes are commonly used for surface crack detection.

- PROBE CONFIGURATION:**

Shielded	P
FOR UNSHIEDED ADD U TO PART	
e.g. Absolute Unshielded	PAU

- COIL:**

Differential	D
Reflection	R
Absolute (Microdot Connector)	A
Absolute Bridge (Triax Lemo- Quick-Disconnect)	AB
Absolute Reflection	AR
Bridge Differential	BD

- PROBE DIAMETER:**

Default Diameter of HF probes = 0.125 in both Stainless Steel & Copper
For .072 diameter add M (Mini Tip) to front of part number
For .065 diameter add MM(Mini Tip) to front of part number
VARIOUS SIZES OF TUBING AVAILABLE PLEASE CONTACT EC/NDT

- ANGLE:**

STRAIGHT	00
45 DEGREE	45
90 DEGREE (Right Angle)	90
VARIOUS DEGREES AVAILABLE PLEASE CONTACT EC/NDT	

- BEND HANDLE**

Straight (default)	
Bend (at handle)	B
Crank (1" from coil side)	C
Crank (2" from coil side)	C2
Curve	Info listed under Drops



HF SURFACE PROBES CONTINUED:

- **LENGTH (WL):**

Probe length in 0.1" from handle end to shaft coil end	Common Sizes 4,5,6
--	--------------------

- **DROP:**

Probe drop in 0.1" Curve is 90 deg. From coil side (Non miter cut)	Common Drops .100, .200, & .500
---	---------------------------------

- **SHAFT:**

Stainless Steel (Default) Copper Flex Shaft	Add FX to end of part number
--	-------------------------------------

- **FREQUENCY:**

Probe frequency, either fixed or range	Default Frequency 50-500KHZ
--	-----------------------------

- **NOTE:** If you cannot configure a part from these options we do SPC numbers for specialty parts. Please contact EC/NDT for more information.



MANUAL BOLT HOLE PROBES:

These probes are used for manual testing of bolt holes.

- **PROBE TYPE:**

Manual Bolt Hole Probes

- **COIL:**

Differential	D
Reflection	R
Absolute	A
Absolute Bridge	AB
Absolute Reflection	AR
Bridge Differential	BD

- **PROBE SHAPE:**

Perimeter Probe	HP
Fastener Head Probe	FP
Split End	1
Self-Expanding	2
Screw Adjustable	3

Add S to number is depth gage is used
Collar default length is 1".

- **DIAMETER:**

Default in inches, see Table 1 (Page 2)
For metric add mm to end of part number

- **CONNECTOR:**

Default connector is microdot
Indicate connector type if not default

- **FREQUENCY:**

Default Frequency is 50-500KHz
Provide frequency range or desired range

- **OVERALL LENGTH:**

Default = 2 inches or in case if metric = 50mm
Indicate required length if not default in inches or mm.
Length measured from probe end to coil hole,



LF SPOT PROBES:

- **PROBE TYPE:**

LF Spot Probes	LF
----------------	----

- **CONNECTOR LOCATION:**

Side Mount (default)	
Top Mount	TM

- **COIL:**

Differential	D
Reflection	R
Bridge Differential	B
Absolute	A
Absolute Bridge	AB

- **DIAMETER:**

Diameter of probe in 0.1" or when metric in mm
--

- **METRIC:**

When in diameter is in metric add mm

- **CONNECTOR TYPE:**

Triax Lemo (Quick disconnect)	TL
Other connectors available upon request	

- **FREQUENCY:**

Provide frequency range or desired frequency
--



LF RING PROBES:

Ring probes are used for crack detection around installed fastener heads. These probes are made to fit various fastener head dia.

PROBE CONFIGURATION:

- PROBE TYPE:**

LF Ring Probe	LF
---------------	----

- COIL:**

Differential	D
Reflection	R
Bridge Differential	BD
Absolute	A
Absolute Bridge	AB

- CONNECTOR LOCATION:**

Side Mount (Default)	
Top Mount	TM

- INTERNAL DIA/OUTSIDE DIA**

Add desired diameters, default in inches
--

- METRIC**

When ID and OD are in metric add	mm
----------------------------------	----

- CONNECTOR:**

Triax Lemo (Quick Disconnect)	TL
2 Pin Microdot	2P
4 Pin Fischer for reflection Ellotest type	4F

- FREQUENCY:**

Provide frequency range



MOLDED PROBES (WHEEL PROBES):

These probes are designed to scan complex shapes and maintain good contact to the surface and to scan large areas. These probes are for example used to scan the bead seat area of aircraft wheels. Complete aircraft wheel inspection kits are available for many different aircraft types. All other specially designed molded probes will be coded as a special, see section under **“SPECIALTY PROBES”**.

PROBE CONFIGURATION:

- **LOCATION:**

Main	WPM
Nose	WPN
Kits are Available	SPCK-Aircraft

- **AIRCRAFT TYPE INDICATION:**

The aircraft type indication i.e. KC-135, CH-47, V22, MD-80.....etc
--

- **COIL TYPE:**

Reflection	Wide Field Scan
Bridge	

- **CONNECTOR TYPE:**

Triax Lemo (Quick disconnect)	TL
Microdot	M
2 Pin Microdot	2P
4 Pin for Reflection Ellotest Type	4F



SLIDING PROBES:

Sliding probes provide an easy and quick method of scanning smooth surfaces to detect surface and subsurface cracks. These probes are mostly used to scan fastener rows. Probes can be designed to meet your specific inspection requirements.

PROBE CONFIGURATION:

- PROBE TYPE:**

Probe	GP
-------	----

- SHAPE:**

Fixed size	F
Adjustable size	A

- LENGTH & WIDTH:**

Length of probe , in case of adjustable Sliding probes the minimum size	
--	--

- STYLE:**

Fixed size	F
Adjustable size length	A
Wheel Adjustable length	WA

- METRIC:**

When length, width & height are in metric add	mm
---	----

- CONNECTOR:**

Default (Triax Lemo)	TL
Microdot	M
2 Pin Microdot	2P
Dual Microdot	DM
4 Pin Fischer	4F

- FREQUENCY:**

Add frequency range or desired frequency	
--	--



BLADE PROBES:

Blade probes provide an easy access in narrow slots or gaps between structures detect surface anomalies. Both sides of the probe are sensitive for defects.

PROBE CONFIGURATION:

- **PROBE TYPE:**

Shielded Blade Probe	BL
For unshielded add U to part number	
i.e. Absolute unshielded	BLAU
For side mount col, change BL to BLS	

- **COIL:**

Differential	D
Reflection	R
Absolute	A
Absolute Reflection	AR
Absolute Bridge	AB

- **THICKNESS:**

3 Standard thickness's are available: 0.08", 0.06", & 0.04"
--

- **WORKING LENGTH:**

Default = 2 inches or in case of metric = 50mm Indicate required length if not default in inches or mm.
--

- **CONNECTOR:**

Default connector is Triax Lemo (Quick Disconnect)	TL
Other connectors available upon request	

- **FREQUENCY:**

Add frequency range or desired frequency
--



FINGER PROBES:

Finger Probes are surface probes that can be handled by sliding a finger into the handle. This gives the possibility to scan areas that are difficult to access and remain in good contact with the surface.

PROBE CONFIGURATION:

- PROBE TYPE:**

Finger probe shielded	FSP
For unshielded add U to part number	
I.e. Absolute unshielded	FSPAU

- COIL:**

Differential	D
Reflection	R
Absolute	A
Absolute Reflection	AR
Absolute Bridge	AB

- ANGLE:**

Straight	00
30 degrees	30
90 degrees (Right Angle)	90
OTHER DEGREES ARE AVAILABLE	

- DROP OR WORKING LENGTH:**

In terms of drop	0.1D
------------------	------

- CONNECTOR**

Default connector is microdot
Triax Lemo (Quick Disconnect) is available upon request

- FREQUENCY:**

Add frequency range or desired frequency
--



SPRING LOADED PROBES:

Spring Loaded probes are used when a constant pressure of the probe on the surface is required. This will give a high repeatability of your inspection.

PROBE CONFIGURATION:

- **PROBE TYPE:**

Spring loaded probe	SLP
---------------------	-----

- **COIL:**

Differential	A
Reflection	R
Absolute	A
Absolute Bridge	AB

- **DIAMETER:**

Diameter of the probe head	i.e. .375 Dia
----------------------------	---------------

- **LENGTH:**

Length of holder	i.e. 2WL
------------------	----------

- **METRIC:**

If diameter and length provided are in metric add	mm
---	----

- **CONNECTOR:**

Triax Lemo (Quick disconnect)	TL
Microdot	M
2 Pin Microdot	2 P
4 Pin Fischer for Reflection Elotest Type	4 F

- **FREQUENCY:**

Provide frequency range or desired frequency
--



DELTRIN SURFACE PROBES:

“Pencil” type probe for surface crack detection.

- **PROBE TYPE:**

Diameter 1/8” Contact EC/NDT for alternate DIA	DSM
--	-----

- **COIL TYPE:**

Differential	D
Reflection	R
Absolute	A
Absolute Bridge	AB
Absolute Reflection	AR

- **LENGTH:**

Length of holder, default in inches

- **METRIC:**

If diameter and length are provided in metric	ADD mm
---	---------------

- **CONNECTOR:**

Triax Lemo (Quick disconnect)	TL
Microdot	M
2 Pin Microdot	2 P

- **FREQUENCY:**

Provide frequency range or desired frequency
--



SPECIALTY ITEMS:

Specially designed probes are available for all your applications. Since the design meets a special requirement the probe identification will be given by EC/NDT.

PROBE CONFIGURATION:

- **PROBE TYPE:**

Special Probe	SPC-XXX
---------------	---------

