

Unique Corrosion Inspection Solution

Fast Survey Scan Mode (J-Scan)

Analysis & 3D Modeling Software

Precision Encoded X-Y Scan

Imaging Flaw Detector

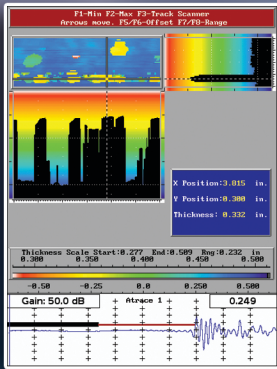
RAPTOR
IMAGING FLAW DETECTOR



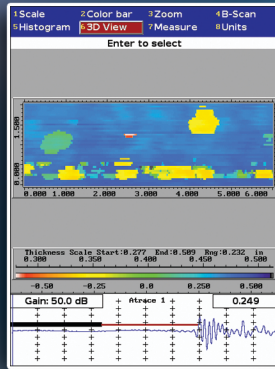
Pipe Scanner Package

NEW Integrated System for Corrosion & Thickness Testing

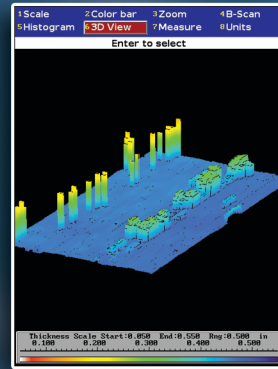
The Pipe Scanner Package provides the operator with a fully portable, battery operated, solution for the investigation of thickness, corrosion or flaws in piping, elbows, pressure vessels and above ground storage tanks.



A&B-Scan



C-Scan



3D-Image

Fast Survey Mode

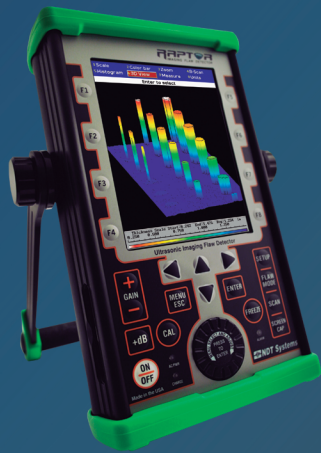
The new Fast Survey Mode (J-scan) uses an encoded hand-held scanner to cover large areas quickly to identify areas of interest. The results are presented in a C-scan style format showing thickness changes or flaws with a defined X increment and an arbitrary Y increment.





Detailed survey mode then uses the high precision automated X-Y scanner to provide a detailed C-scan on the focused areas of interest. The Integrated software allows for rotatable 3D images, thickness analysis, report writing and much more.





RAPTOR
IMAGING FLAW DETECTOR

Armadillo

RCA-10



-  Encoded X-axis
-  Hand-held
-  J-Scan generated Image
-  Liquid feed system

-  Automated Scanning
-  Magnetic wheels for secure contact
-  Up to 18" (450mm) scan arm
-  Liquid feed system

 **NDT Systems**
Worldwide Excellence in Ultrasonics

5542 Buckingham Drive, Huntington Beach CA 92649 Phone: 714-893-2438 Fax: 714-897-3840 Email: Info@ndt-systems.com www.ndt-systems.com