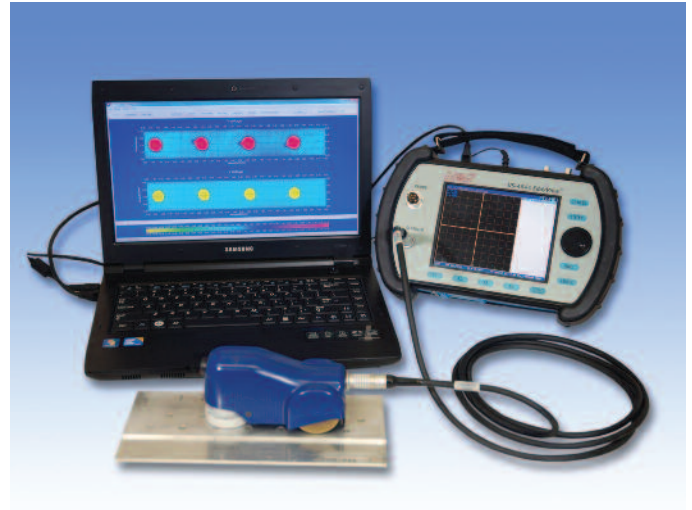


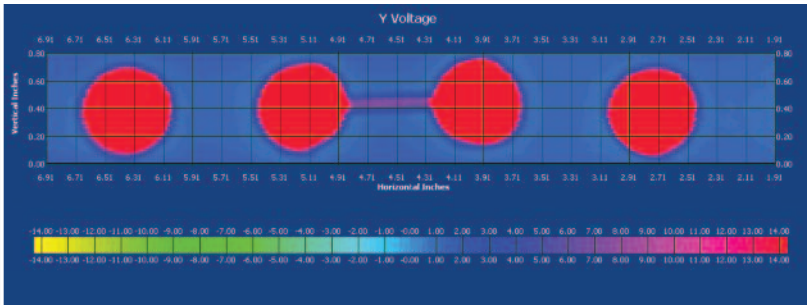
The **ECS-3 Scanner** is a handheld eddy current scanner that enhances the inspection of surfaces by providing fast NDI inspections and detailed, real-time C-scan imaging.

Features include:

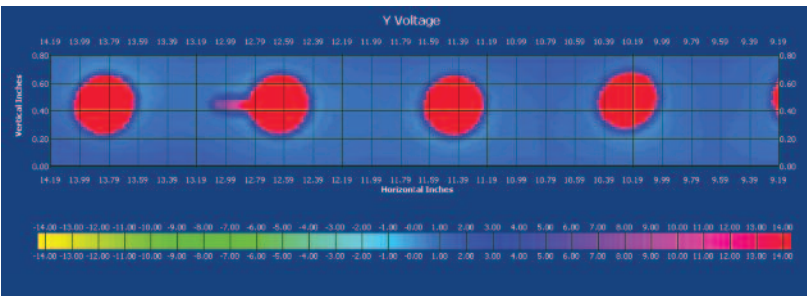
- Scrollable C-scan imaging in color or grey scale
- Colors depict shape, size, and depth of discontinuities
- Included Color Palette Tool allows creation of application specific color scales
- Data and images can be saved and reviewed later for verification of defects or used for reports
- Save up to 82 feet of continuous data



Complete ECS-3 Scanner System.



Defect extending between two flush fasteners.



0.209" EDM extending from flush fastener.

- On/Off switch on the handheld scanner coordinates the null and erase functions automatically
- Single channel US454-A Eddyview simplifies set up and automatically transfers all necessary information to the C-scan display device with minimal operator involvement
- Can be used with both non-magnetic and magnetic fasteners in aluminum and other materials
- Limited Subsurface scanning
- Removable, easy to exchange probes
- Simple to setup, calibrate, and operate
- Ideal in finding defects around flush fasteners

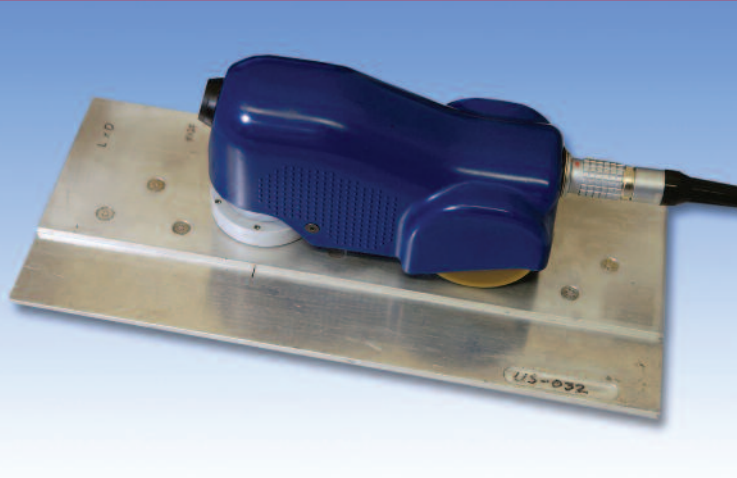
ECS-3 Scanner

PROBE SPECIFICATIONS

- Replaceable
- Absolute coil arrangement
- 20 kHz for deeper penetration
- 200 kHz for standard surface inspection such as aluminum
- 2MHz for surface inspection of low conductivity alloys such as titanium
- Other frequencies available depending on application

SYSTEM COMPONENTS

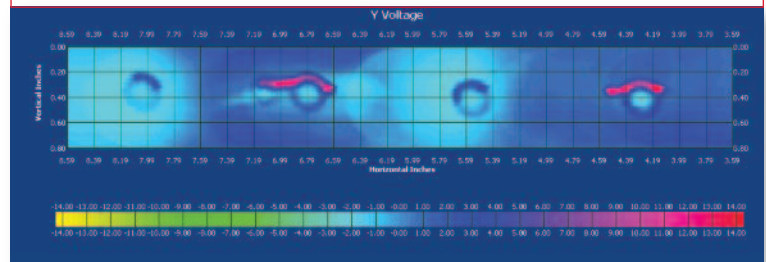
- **ECS-3 Scanner** – The Operator's hand controls the start and stop of the scans as well as the motion of the scanner. Designed to fit in the hands of an average adult.
- **C-Scan Display and Controller** – Collects the data and displays it as a C-scan for further evaluation.
- **US-454A EddyView** – Provides the eddy current signal to the probe in the ECS-3 scanner as well as collects the response to the inspection and distributes it to the controller for imaging. Portable and battery operated for all eddy current inspections including bolt hole and surface.



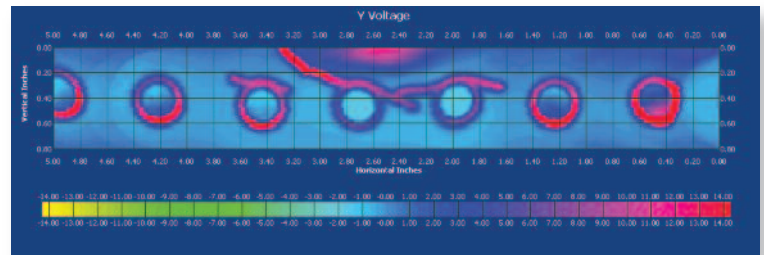
Patent Pending.

SCANNER SPECIFICATIONS

- Scan Width .750" (19mm)
- Weight 1 lbs. 2 oz (.54 kg)
- Size of Scanner 5.7" L (145 mm)
2.98" H (76 mm)
2.42" W (61 mm)
- Cable Length 8" (2.44 m)
- Scan Motion Circular
- Coil Type Absolute or Differential
- Operating Voltage 24 Volts DC
- On/Off Handy push-button control on the front of the scanner
- Null & Erase Integrated into the On/Off Button



Eyebrow defects above fastener holes.



Defects above fastener holes.

To order the ECS-3 Kit, ask for Part #99460.
Specifications are subject to change without notice.

UniWest
Tough Challenges. Critical Solutions.

UniWest provides critical solutions for non-destructive testing.

TEL: 509.544.0720 | FAX: 509.544.0868

122 South 4th Ave, Pasco, WA 99301

www.uniwest.com

Specifications subject to change without notice. March, 2012