

Olson Kundig®

Door Hardware – Lever



Tom Kundig Collection tKnobler

Designed by: Tom Kundig

Available in either 2-3/8" dia. or 1-1/4" dia. steel tube, blackened with wax finish.

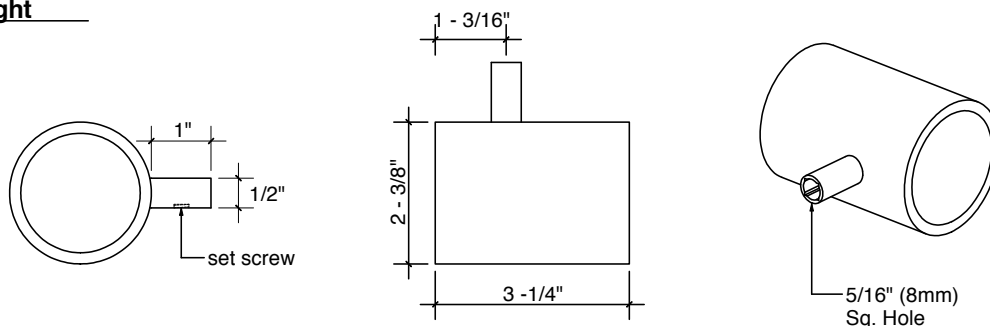


Optional finish for the 2-3/8" dia. only - powder coated (satin black, gloss red, or gloss white)

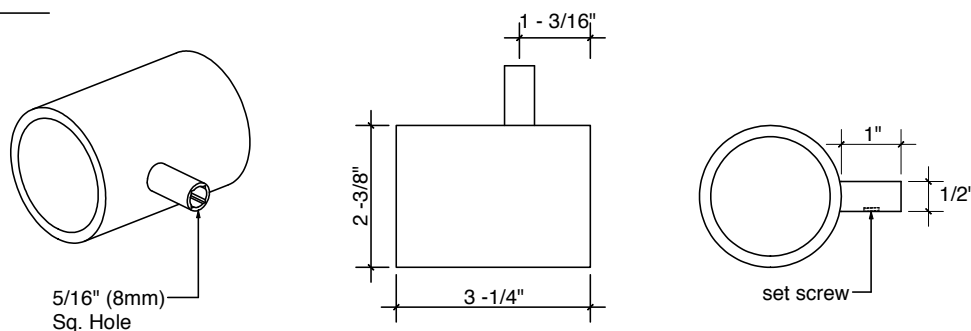
Also available in stainless steel with a satin bead-blasted finish, or in solid bronze with an oil-rubbed finish.

2-3/8"Ø x 3-1/4" tKnobler

Right



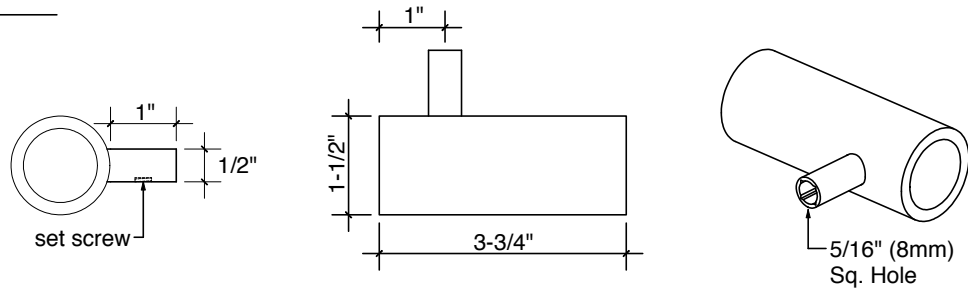
Left



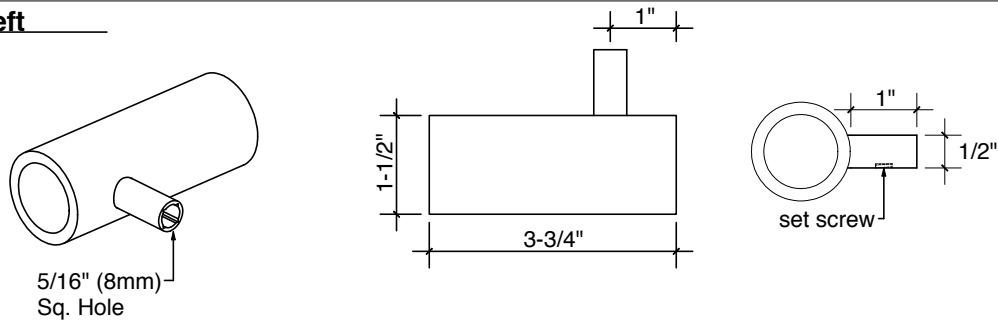
Our products are fabricated and finished by hand; variations in size, shape, and color are a natural result of this process. Tooling marks and surface scratches are part of the character of the finished pieces. Most products are sealed with wax, which over time is not impervious to moisture and corrosion. The standard wax finish allows the steel to age naturally and develop its own character. For a more durable exterior finish, we recommend the optional powder coating. Steel hardware should not be installed with dissimilar metals. Steel hardware installed outside or in areas exposed to moisture will eventually rust. Periodic maintenance will be required. For treatment of minor rust, we recommend rubbing the affected area with steel wool and applying carnauba paste wax. Our products are not recommended for commercial use.

1-1/2"Ø x 3-3/4" tKnobler

Right

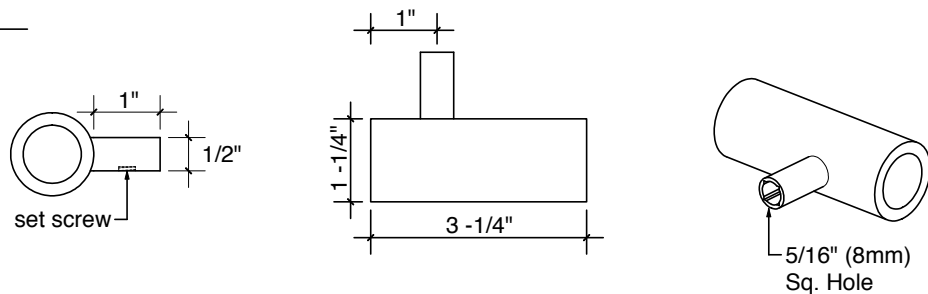


Left

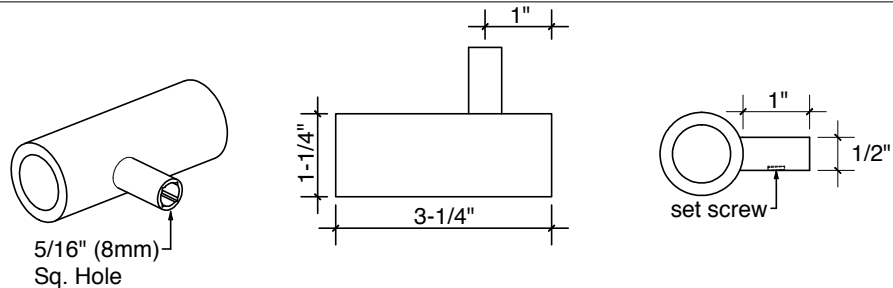


1-1/4"Ø x 3-1/4" tKnobler

Right



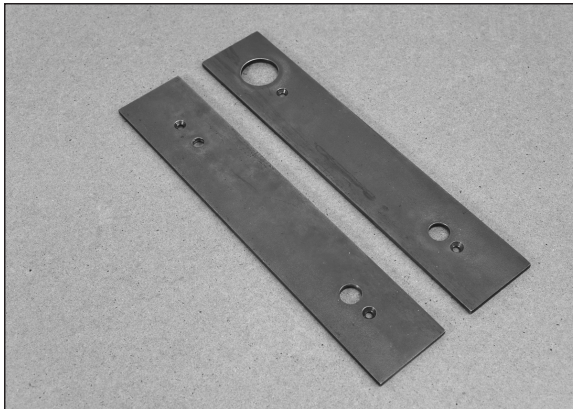
Left



Our products are fabricated and finished by hand; variations in size, shape, and color are a natural result of this process. Tooling marks and surface scratches are part of the character of the finished pieces. Most products are sealed with wax, which over time is not impervious to moisture and corrosion. The standard wax finish allows the steel to age naturally and develop its own character. For a more durable exterior finish, we recommend the optional powder coating. Steel hardware should not be installed with dissimilar metals. Steel hardware installed outside or in areas exposed to moisture will eventually rust. Periodic maintenance will be required. For treatment of minor rust, we recommend rubbing the affected area with steel wool and applying carnauba paste wax. Our products are not recommended for commercial use.

Olson Kundig®

Door Hardware – Escutcheon Plate



Tom Kundig Collection Plate

Designed by: Tom Kundig

Cut from 3/16" steel plate, 13-3/4" h x 2-3/8" w, blackened with wax finish (available in 3 layouts: with hole for tKnobler only, with holes for tKnobler & Latch, or with holes for tKnobler & cylinder lock).



Optional finish - powder coated (satin black, gloss red, or gloss white)

Also available in stainless steel with a satin bead-blasted finish, or in solid bronze with an oil-rubbed finish.

Designed specifically to fit an Accurate 9100 Series mortise lock, an Accurate 7200 Series deadlock, and Baton AC31 keyed cylinder, all available for purchase from 12th Avenue Iron.

Plate with hole for
tKnobler only

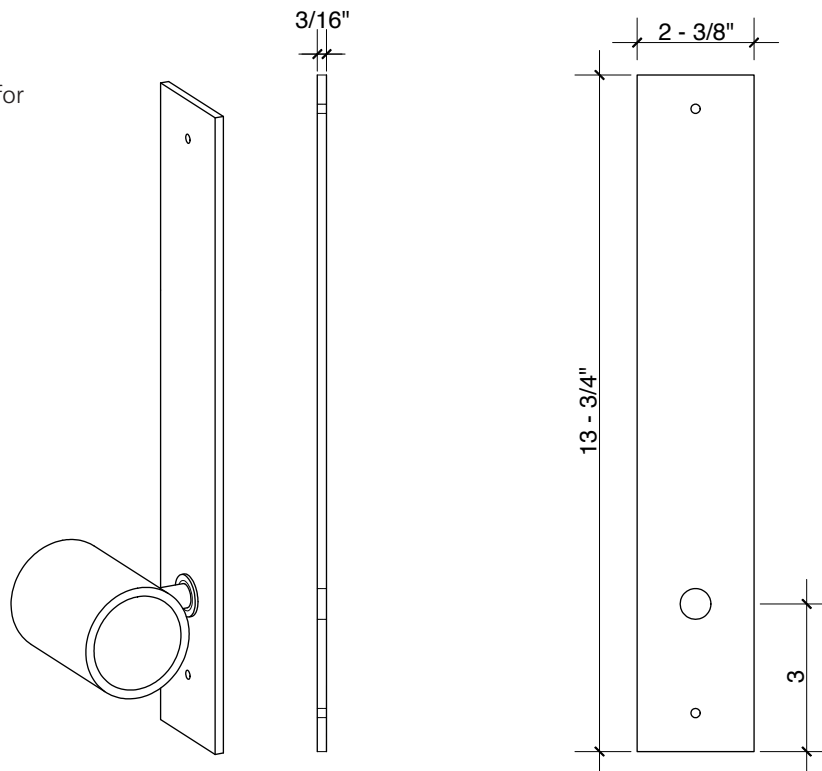


Plate with hole for
tKnobler and latch

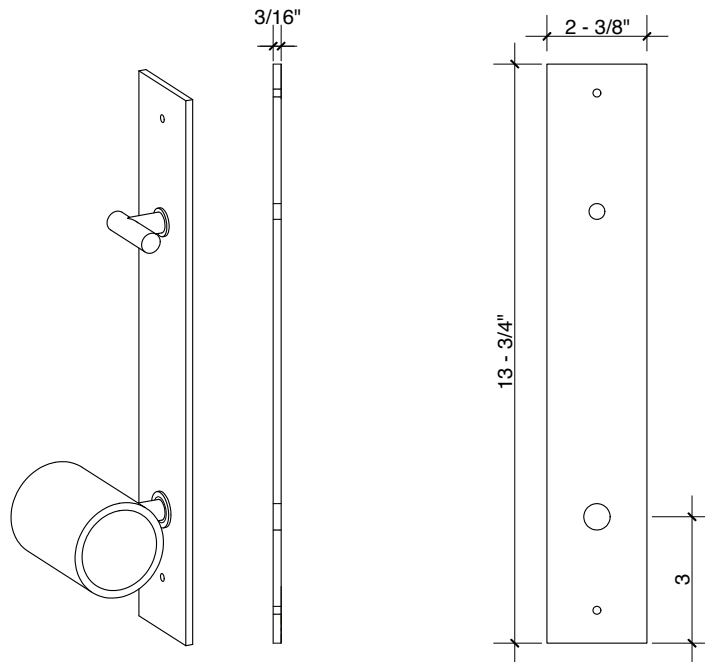
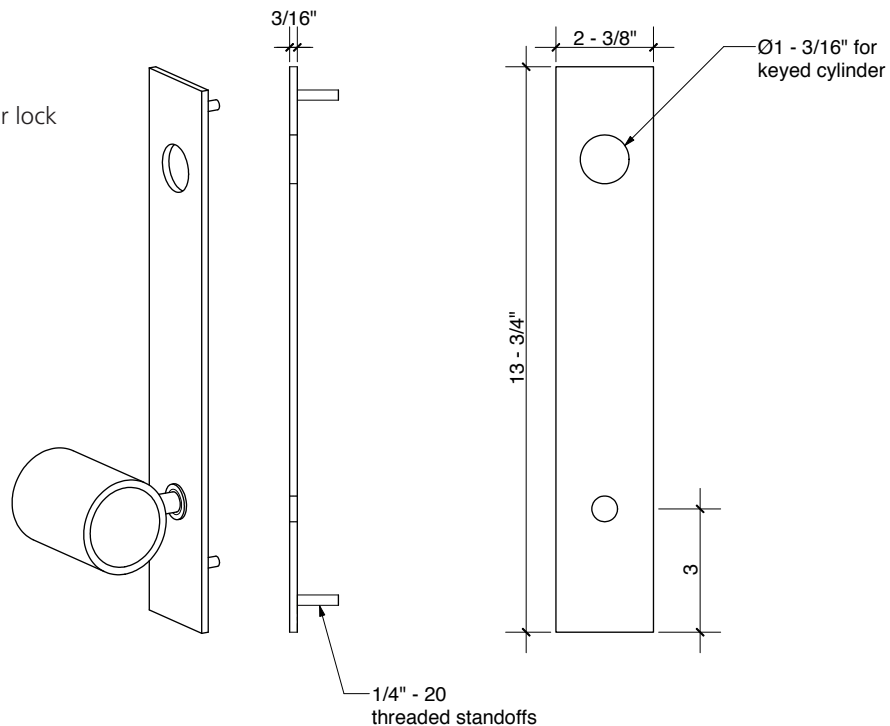


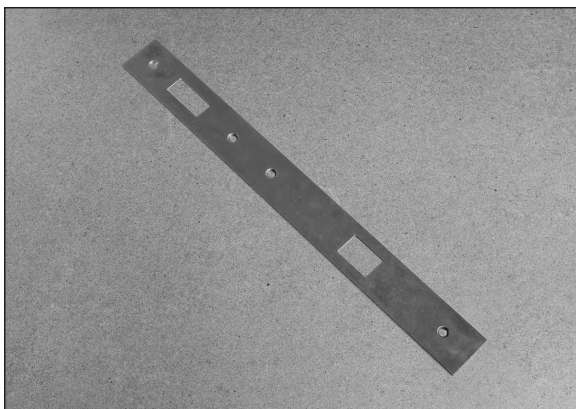
Plate with hole for
tKnobler and cylinder lock



Our products are fabricated and finished by hand; variations in size, shape, and color are a natural result of this process. Tooling marks and surface scratches are part of the character of the finished pieces. Most products are sealed with wax, which over time is not impervious to moisture and corrosion. The standard wax finish allows the steel to age naturally and develop its own character. For a more durable exterior finish, we recommend the optional powder coating. Steel hardware should not be installed with dissimilar metals. Steel hardware installed outside or in areas exposed to moisture will eventually rust. Periodic maintenance will be required. For treatment of minor rust, we recommend rubbing the affected area with steel wool and applying carnauba paste wax. Our products are not recommended for commercial use.

Olson Kundig®

Door Hardware – Cover Plate



Tom Kundig Collection Cover

Designed by: Tom Kundig

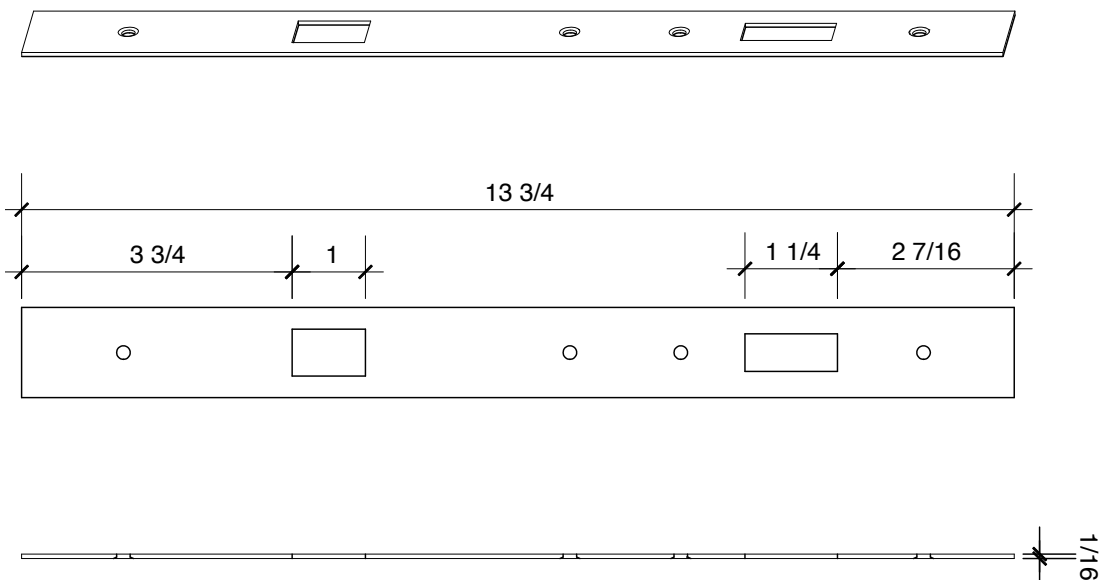
Cut from 16-ga. steel, 13-3/4" h x 1-1/4" w,
blackened with wax finish.



Optional finish - powder coated (satin black, gloss red, or gloss white)

Also available in stainless steel with a satin bead-blasted finish, or in solid bronze with an oil-rubbed finish.

Designed specifically to fit an Accurate 9100 Series mortise lock, an Accurate 7200 Series deadlock, and Baton AC31 keyed cylinder, all available for purchase from 12th Avenue Iron.



Our products are fabricated and finished by hand; variations in size, shape, and color are a natural result of this process. Tooling marks and surface scratches are part of the character of the finished pieces. Most products are sealed with wax, which over time is not impervious to moisture and corrosion. The standard wax finish allows the steel to age naturally and develop its own character. For a more durable exterior finish, we recommend the optional powder coating. Steel hardware should not be installed with dissimilar metals. Steel hardware installed outside or in areas exposed to moisture will eventually rust. Periodic maintenance will be required. For treatment of minor rust, we recommend rubbing the affected area with steel wool and applying carnauba paste wax. Our products are not recommended for commercial use.