

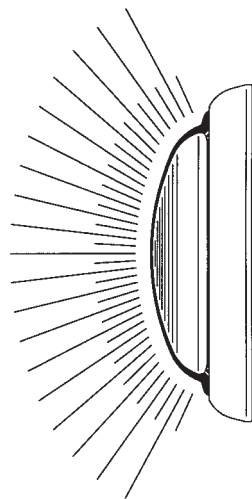


# ***TRIMLITE***

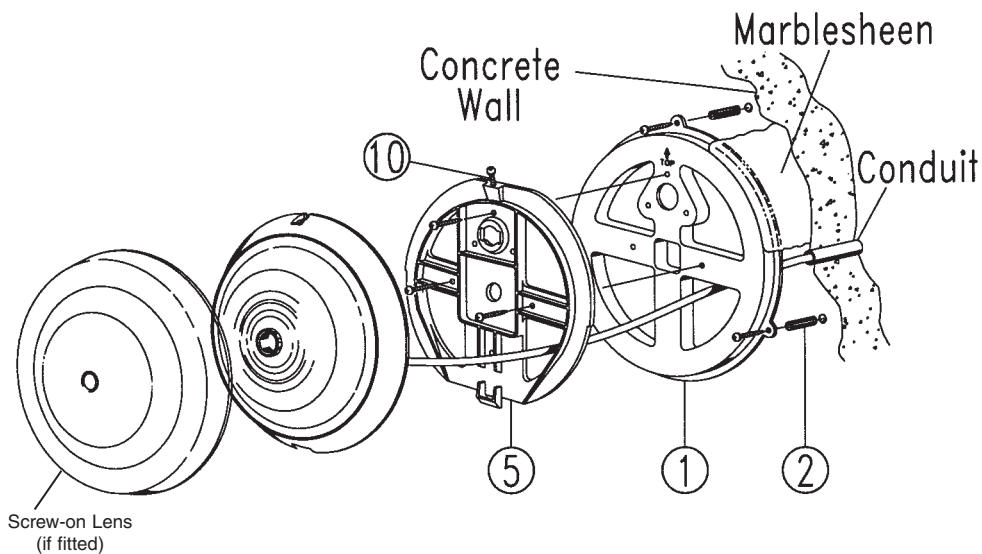
QUARTZ HALOGEN UNDERWATER LIGHTS

**SUITABLE FOR CONCRETE, FIBREGLASS  
AND VINYL LINED POOLS AND SPAS**

- Extra low voltage — 12 volt
- Moulded from high heat & impact resistant materials
- 3m, 10m, 15m or 20m long cable
- Simple lamp replacement
- Easy to install mounting kits supplied

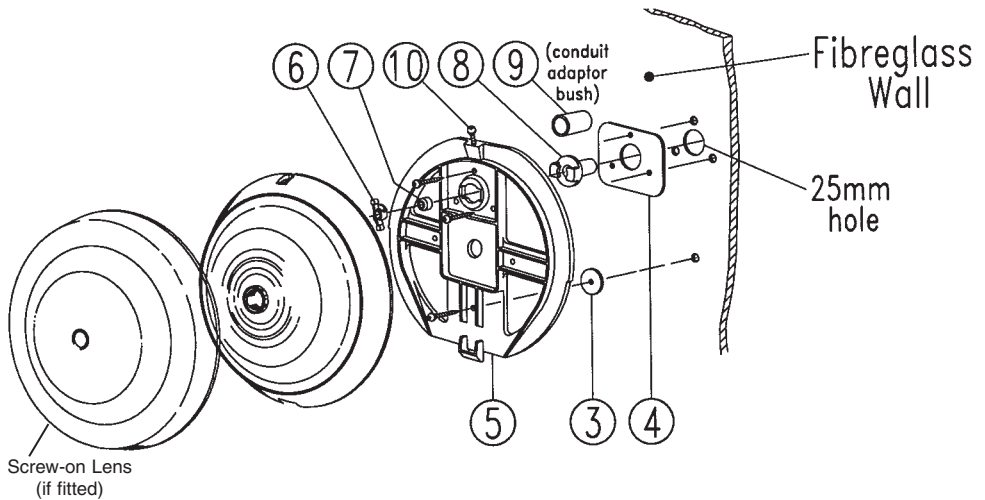


## ***OWNERS MANUAL***



## **CONCRETE POOL INSTALLATION**

1. It is recommended that the Trimlite be located on a flat area of the concrete shell of the pool wall prior to the application of the interior finish.
2. The Trimlite should be located at least 250mm below mean water level.
3. Suitable electrical conduit should be installed through the wall to accommodate the power cord. The conduit should be installed in compliance with the requirements of the AS/NZS3000:2000 Wiring Rules.
4. Fit the Wall Levelling Ring (**Item 1**) to the wall using the masonry plugs and screws (**Item 2**) provided. The Ring should be located so that the conduit is in the right or left hand triangular opening of the Ring with the arrow and "TOP" as indicated. Do not overtighten screws as this may cause distortion if the surface is uneven.
5. Apply interior finish to concrete, ensuring that it is flush with front surface of the Wall Levelling Ring (**Item 1**).
6. Attach Mounting Plate (**Item 5**) to Wall Levelling Ring (**Item 1**) with the 3 x 8 gauge stainless steel self-tapping screws provided.



## **FIBREGLASS POOL INSTALLATION**

1. It is recommended that the Trimlite be located on a flat area of the pool wall at least 250mm below mean water level. However, should installation on a curved wall be unavoidable, spacer washers (**Item 3 & 4**) have been provided and shall be installed for this application as shown on diagram.
2. **Please Note:** Before proceeding, check that the Black Cable Gland Body (**Item 8**) is properly clipped into the matching hole in the rear of the Wall Mounting Plate (**Item 5**).
3. Check which type/size of electrical conduit is to be attached to the Cable Gland and (if necessary) glue the Conduit Adaptor Bush (**Item 9**) over the tail of the Gland Body using PVC pipe or conduit cement.
4. A clearance hole of suitable size to suit the appropriate electrical conduit being used should be drilled through the pool wall. This hole should be located approximately 300mm below mean water level to suit the position of the Cable Gland Body (**Item 8**) attached to the rear of the Wall Mounting Plate (**Item 5**).
5. **Fit the Wall Mounting Plate (Item 5) to the wall as follows:**
6. Position the Wall Mounting Plate (**Item 5**) with the Locking Screw (**Item 10**) upwards so that the spigot on the rear of the Cable Gland (**Item 8**) is centralised in the conduit hole in the wall.
7. Using a suitable drill bit to mark the pool wall, spot the positions of the three screw holes in the Plate around the outside of the Cable Gland and the single hole near the bottom of the Plate.

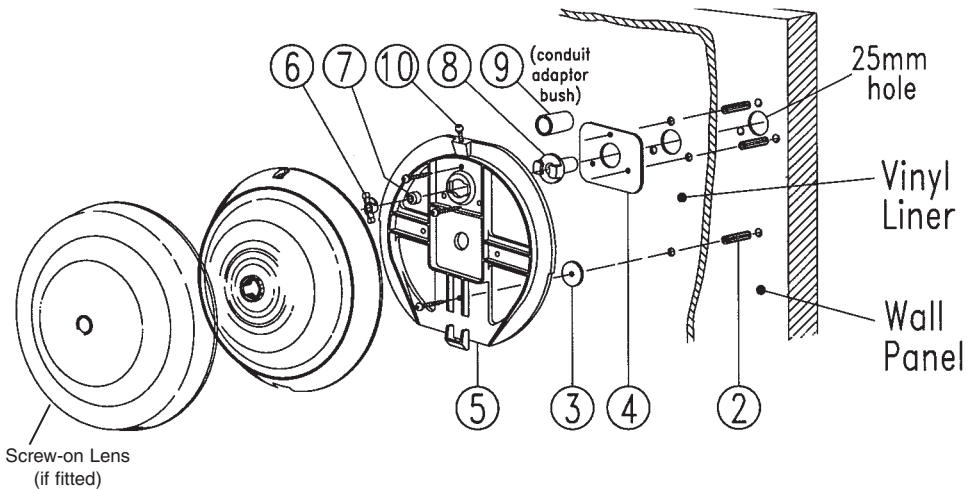
**CONTINUED - SEE NEXT PAGE**

## **FIBREGLASS POOL INSTALLATION CONT'D**

8. Drill 4 x holes 3.2mm or J" diameter through pool wall at the marked positions to suit 8 gauge self-tapping screws.
9. Remove Plate and clean the rear flange of the Cable Gland and around the conduit entry hole in the pool wall.
10. Apply a liberal coating of suitable waterproof silicone sealant to the rear flange surface of the Black Cable Gland (and all faces of spacer washers if needed) and around both sides of the holes in the Plate for the four self-tapping screws.
11. Refit Plate/Gland assembly and fix in place using the four 8 gauge self-tapping stainless steel screws provided. Do not overtighten the screws as this may cause distortion if the surface is uneven.
12. Unlock the Compression Nut (**Item 6**) from the Cable Gland (**Item 8**) by turning 90° in an anticlockwise direction then push the electrical cable (attached to the Trimlite) through the Compression Nut (**Item 6**), the Rubber Sealing Bush (**Item 7**) and finally the Gland Body (**Item 8**), leaving approximately 1.4m of free cable between pool wall and Trimlite.

**Please Note:** The use of tools in the next step is not required and could cause damage if utilised.

13. Slide Bush and Nut back into Gland Body then seal cable by pushing Nut firmly to compress rubber and rotating it clockwise a quarter turn until it clicks to its stop position.
14. The correct electrical conduit can then be fitted at the appropriate time in accordance with the requirements of the AS/NZS3000:2000 Wiring Rules.



## **VINYL LINED POOL INSTALLATION**

**NOTE:** The following instructions relate to in-ground pre-cast concrete wall panelled pools, however, variations on these installation procedures may be needed, depending on the method of wall fabrication and materials used!

It is recommended that the Trimlite be located on a flat area of the pool wall at least 250mm below mean water level. However, should installation on a curved wall be unavoidable, spacer washers (**Items 3 & 4**) are provided for this application.

**Please Note:** Before proceeding, check that the Black Cable Gland Body (**Item 8**) is properly clipped into the matching hole in the rear of the Wall Mounting Plate (**Item 5**).

Check which type/size of electrical conduit is to be attached to the Cable Gland and (if necessary) glue the Conduit Adaptor Bush (**Item 9**) over the tail of the Gland Body using PVC pipe or conduit cement.

**Pre-fit the Wall Mounting Plate (Item 5) to the wall as follows:**

1. A clearance hole of suitable size to suit the appropriate electrical conduit being used should be drilled through the pool wall. This hole should be located approximately 300mm below mean water level to suit the position of the Cable Gland Body (**Item 8**) attached to the rear of the Wall Mounting Plate (**Item 5**).
2. Position the Mounting Plate with the Locking Screw (**Item 10**) upwards so that the spigot on the rear of the Cable Gland is centralised in the conduit hole in the wall.
3. Using a suitable drill bit to mark the pool wall, spot the positions of the three screw holes in the Plate around the outside of the Cable Gland and the single hole near the bottom of the Plate.
4. Remove Plate and drill 4 x holes ¼" diameter into pool wall at the marked positions to suit the plastic masonry plugs provided.
5. Fit the 4 x green masonry plugs to these holes.
6. Fit the pool liner in the normal way, then pierce holes through liner to match holes in wall.
7. Clean and apply a liberal coating of suitable waterproof silicone sealant to the rear flange surface of the Black Cable Gland and around both sides of the holes in the Plate for the four self-tapping screws.

**CONTINUED - SEE NEXT PAGE**

## **VINYL LINED POOL INSTALLATION CONT'D**

8. Refit the Plate/Gland assembly and fix in place using the four 8 gauge self-tapping stainless steel screws provided.
9. Unlock the Compression Nut (Item 6) from the Cable Gland (**Item 8**) by turning 90° in an anticlockwise direction then push the electrical cable (attached to the Trimlite) through the Compression Nut (**Item 6**), the Rubber Sealing Bush (**Item 7**) and finally the Gland Body (**Item 8**), leaving approximately 1.4m of free cable between Trimlite and pool wall.

**Please Note:** The use of tools in the next step is not required and could cause damage if utilised.

10. To seal cable, slide Rubber Bush and Nut back into Gland Body then push Nut firmly and rotate it clockwise a quarter turn until it clicks to its stop position.

The correct electrical conduit can now be fitted to the rear of the Gland in accordance with the requirements of the AS/NZS3000:2000 Wiring Rules.

## **FITTING THE TRIMLITE TO THE MOUNTING PLATE (all models)**

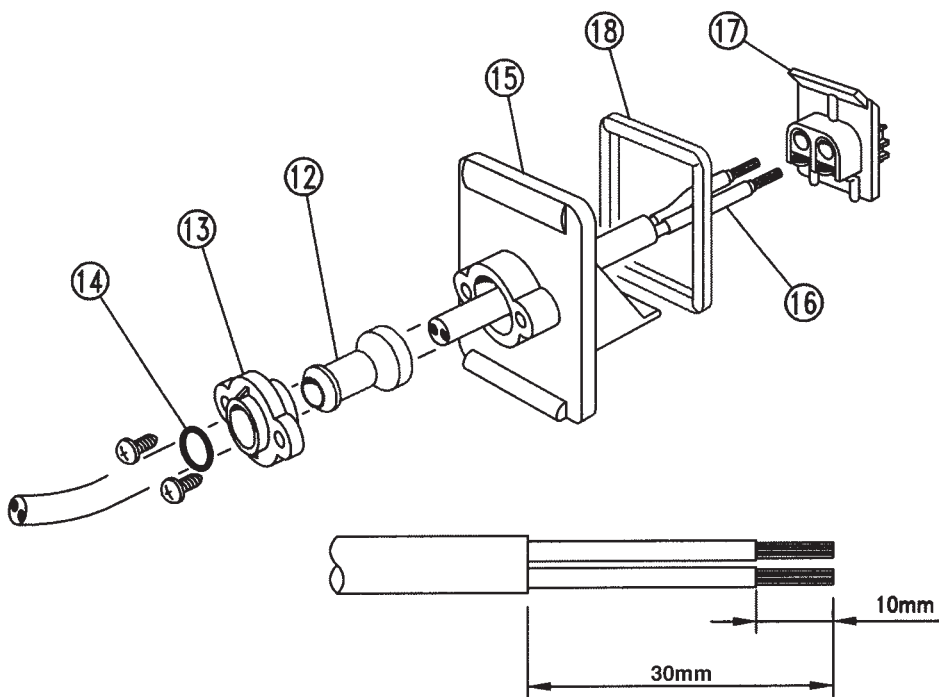
1. If fitted, remove the Screw-On Lens by rotating it anti-clockwise.
2. Wind excess cable around the hooks on rear of Light and hold the unit at top near the 4.0mm wide slot.
3. Place the large slot at the bottom of the Light over the guides on the lower half of the Wall Mounting Plate while holding the top of the unit out from the wall about 50mm.
4. Slide the Light downwards along these guides until it catches positively on the hook at the bottom of the Plate.
5. Carefully push any excess cable in behind the Light then push the top of the unit back against the pool wall until it will fit firmly over the plate and flush with the pool wall with screw (**Item 10**) inside the top slot of the Light.
6. Tighten Locking Screw (**Item 10**) to retain Light in place.
7. If provided replace Screw-On Lens. Do not overtighten!
8. The other end of the cable must be connected to a suitable sized cable to comply with the requirements of AS/NZS3000:2000 Wiring Rules.

**NOTE: To be wired only by a licensed electrician.**

## **WARNING**

- TRIMLITE must be submerged before lighting.
- After switching lamp off, wait 15 minutes before switching on again. (Failure to observe this will shorten the life of the lamp).
- Do not overtighten Screw-On Lens.

**THE TRIMLITE MUST BE MOUNTED IN THE VERTICAL POSITION.  
FAILURE TO DO SO WILL CAUSE DAMAGE TO THE LIGHT AND THE  
WARRANTY WILL BE VOID.**



### **CONNECTING THE CABLE TO THE TRIMLITE/ ECOLITE**

1. Strip the cable to the dimensions shown above.
2. Fit the white Cable Gland Bush (**Item 12**) into the Compression Sleeve (**Item 13**).
3. Slide the 'O' Ring (**Item 14**) over the stripped Cable, pass the Cable through the Bush and Sleeve, then slide the 'O' Ring over the flared end of the Bush.
4. Pass the Cable through the hole in the Access Cover (**Item 15**).
5. Slide (2) Sleeves (**Item 16**) over the Cable wires and insert the stripped ends into the brass terminals in the Lamp-holder (**Item 17**), then tighten the two screws.
6. Snap assemble the Lamp-holder (**Item 17**) to the Access Cover (**Item 15**).
7. Attach the Gland Bush/Compression Sleeve/'O' Ring assembly to the Access Cover with the (2) self-tapping screws provided.
8. Fit a Lamp to the assembly — refer to instructions "REPLACING THE LAMP".
9. Fit the Gasket (**Item 18**) to the Access Cover.
10. Please refer to separate data sheet for instructions on re-fitting the Access Cover/Lamp Assembly to the Light Assembly.

# **LAMP REPLACEMENT**

## **REMOVING THE TRIMLITE FROM THE POOL**

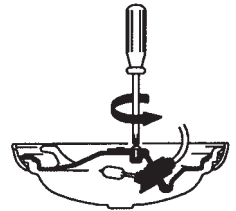
1. Turn off power supply to transformer.
2. If fitted, remove the Screw-On Lens from the front of the Light.
3. Using a "Phillips type" screwdriver, loosen the Locking Screw on top of the Light by turning 4 full turns in an anti-clockwise direction. Do not remove completely.
4. Carefully pull top of Light away from the wall about 50mm then pull upwards firmly to disengage.
5. Carefully lift Light onto the pool decking while at the same time allowing the cable to unwind from between the hooks on the rear of the backplate.
6. Place Light on a clean piece of cloth or newspaper to prevent scratching.



## **REMOVING THE LAMP**

**CAUTION:** Do not attempt to dismantle the locking ring, lens and backplate just to change a failed lamp as the rubber seal around this area has been pressure tested during initial manufacture and any undue disturbance may cause water to leak into the Trimlite when re-installed.

7. Using a "Phillips type" screwdriver, remove the screw and clamp plate at the centre of the backplate to release the cover for the lamp.
8. Gently tilt the Access Cover away from the Backplate until a stop is felt then (by holding the power cord) lift, tilt and pull gently back to reveal the lamp.
9. The failed lamp can now be removed from the lamp holder by loosening the two clamping screws, then pulling it straight out.





## **REPLACING THE LAMP**

10. Inspect the lampholder and inside the enclosure for signs of water entry, broken pieces of lamp etc. and remove if necessary. Any condensation should be removed by flushing with methylated spirits and allowing to dry thoroughly before refitting lamp. Failure to remove moisture can result in premature lamp failure.
11. Inspect and clean gasket and groove. Replace and/or refit if necessary.
12. After checking that the replacement lamp has the correct voltage/wattage rating, remove the lamp from the package using a clean paper tissue. Be careful to avoid touching the lamp with fingers. If the glass is accidentally touched with the fingers, immediately wipe with a clean paper tissue dampened with methylated spirits. Failure to observe this procedure will result in premature lamp failure.
13. Carefully insert the two pins of the lamp into the lamp holder and tighten the two screws. Be careful not to rock or twist the lamp during this operation as cracking of the glass where the pins enter can result.
14. Please refer to the next page for instructions on re-fitting Access Cover/Lamp Assembly to Trimlite or Ecolite.

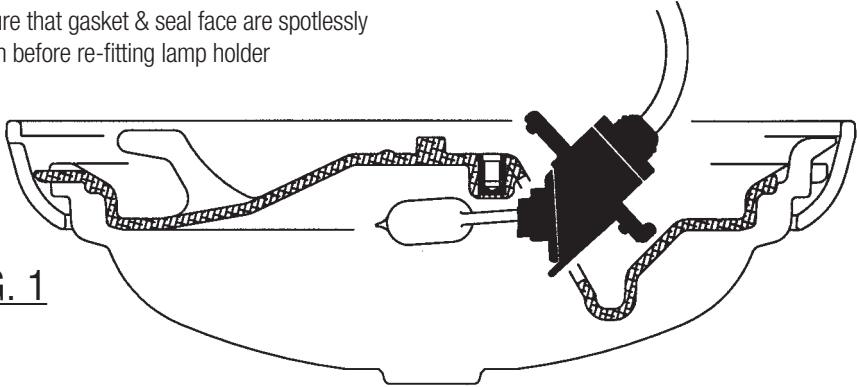
## **REFITTING TRIMLITE TO POOL WALL**

15. Wind excess cable onto the hooks on the rear of the Light and hold the unit at top near the 4.0mm wide slot.
16. Place the large slot at the bottom of the Light over the guides on the lower half of the Wall Mounting Plate while holding the top of the unit out from the wall about 50mm.
17. Slide the Light downwards along these guides until it catches positively on the hook at the bottom of the Plate.
18. Carefully push any excess cable in behind the Light then push the top of the unit back against the pool wall until it will fit firmly over the plate and flush with the pool wall with screw (Item 10) inside the top slot of the Light.
19. Tighten Locking Screw (Item 10) on top to retain Light in place.
20. If provided, replace Screw-On Lens. Do not overtighten!
21. Switch on to test.

## **FITTING OF ACCESS COVER/LAMP ASSEMBLY TO UNDERWATER LIGHT BACK-PLATE**

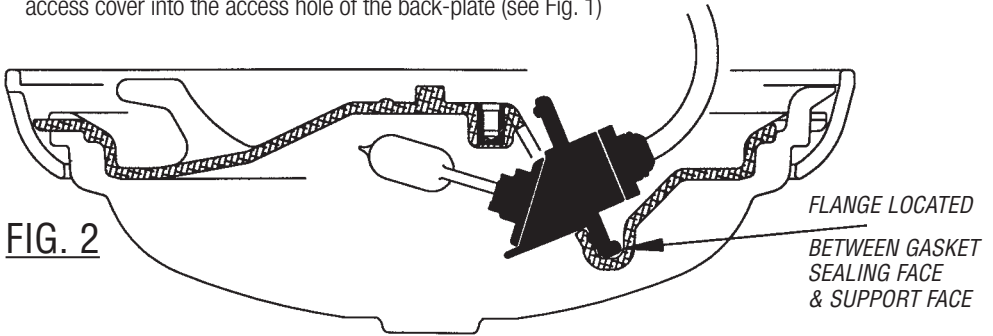
Ensure that gasket & seal face are spotlessly clean before re-fitting lamp holder

**FIG. 1**



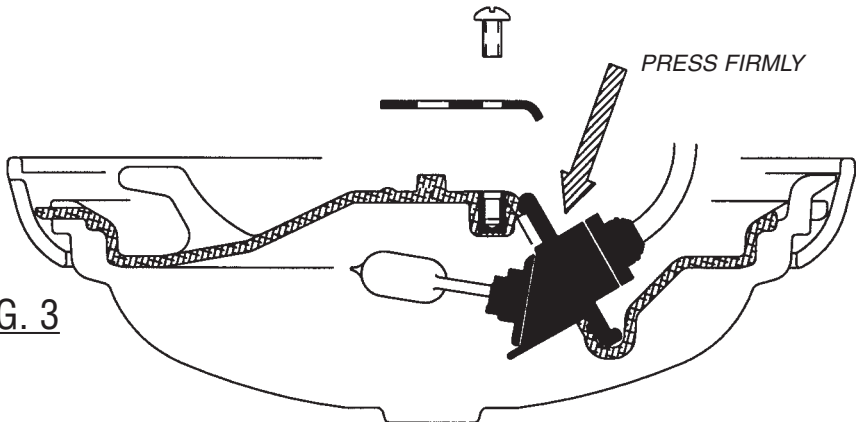
1. While holding the access cover/lamp assembly by the power cord, insert lamp and front portion of the access cover into the access hole of the back-plate (see Fig. 1)

**FIG. 2**



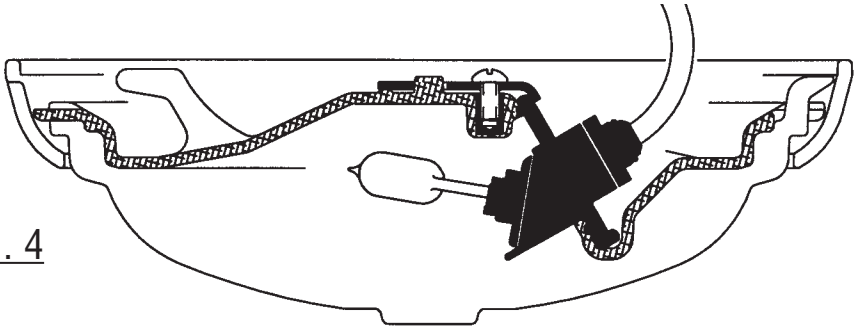
2. Locate the access cover correctly on the back-plate by ensuring that its lower flanged is positioned between the gasket sealing face and the support face of the back-plate (see Fig. 2.)

**FIG. 3**



3. While pressing down on the access cover in the direction of the arrow on Fig. 3 fit the clamp plate over the centre peg of the back-plate, fit the screw then tighten the screw with a 'Phillips' type screw driver.

**FIG. 4**



4. The access cover will now be held firmly in place on the back-plate with the gasket sealing the assembly.

### **TRIMLITE UNDERWATER LIGHT WARRANTY**

In addition to the conditions of sale and warranties implied at law and which may not be excluded, **Poolrite** warrants the **Trimlite** Underwater Light to be free from defect for a period of twelve months from the date of purchase by the owner from **Poolrite** or an authorised Supplier of the **Trimlite** Underwater Light.

Light Globes are beyond the control of **Poolrite** and as such a limited guarantee of 60 days from the date of purchase applies.

N.B. Should the light globe fail due to a manufacturing fault in the light housing within the twelve months following purchase, the light globe will be replaced at no charge.

Poolrite will authorise a qualified technician to repair the **Trimlite** Light provided that:

- **Poolrite** is notified within seven (7) days of the defect being detected;
- the **Trimlite** Light is not operated subsequent to detection of the defect;
- the **Trimlite** Light has not undergone any unauthorised modification or been fitted with other than genuine **Poolrite** approved parts; and
- the **Trimlite** light has been installed and operated in accordance with the Installation Instructions and Operating Instructions, respectively.

**Poolrite** will not be liable to repair the **Trimlite** Light if the repair is necessary because of misuse, accidental damage, entry of foreign objects or materials into the equipment, improper or inadequate maintenance or repair or incorrect operation of the **Trimlite** Light.

This warranty does not extend to reasonable wear and tear of the **Trimlite** Light.

All repairs must be undertaken by a technician authorised by **Poolrite**.

The Owner will be responsible for all freight and/or travelling charges. **Poolrite** accepts no responsibility for goods while in transit.

**Poolrite** accepts no responsibility for representations other than as expressly contained in literature published by **Poolrite**. In particular **Poolrite** has made no representation as to the fitness of the **Trimlite** Light for any particular purpose except as contained in such literature.



The **only** supplier of genuine  
Poolrite spares in the world.



**The Evolve Group**

P 07 3283 1196 | F 07 3883 1560 | E [poolrite@evolvegrp.com](mailto:poolrite@evolvegrp.com)

PO Box 3077 Clontarf QLD 4019 AUSTRALIA

[www.poolrite.com](http://www.poolrite.com)

