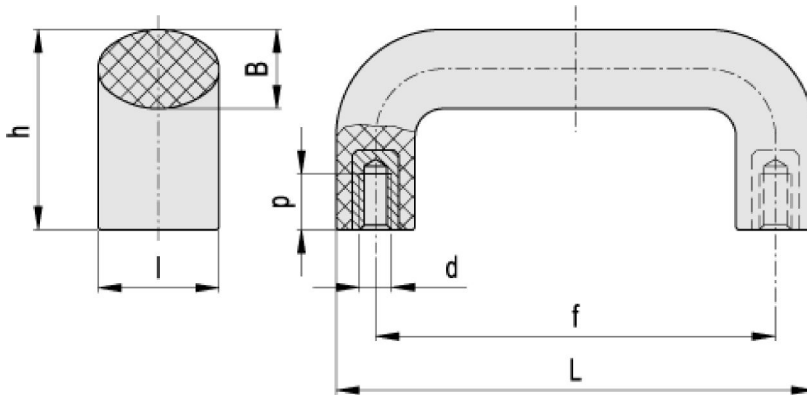


# M.843 CLEAN



## Handles

ELESA Original design



Elesa Standards		Main dimensions					Threaded bosses		F <sub>1</sub>	F <sub>2</sub>	L <sub>1</sub>	L <sub>2</sub>	Weight
Code	Description	L	f	h	B	l	d <sub>6H</sub>	p	[N]	[N]	[J]	[J]	g
151406	M.843/100-SST-M6 CLEAN	103	86±0.5	46.5	17	26	M6	12	4000	7000	50	120	52
151412	M.843/140-SST-M8 CLEAN	138	117±0.5	54	20	30	M8	13	4500	5000	50	120	80
151416	M.843/200-SST-M8 CLEAN	200	179±1	62	20	30	M8	13	2000	2400	27	80	105
151419	M.843/320-SST-M8 CLEAN	322	300±1	64	22	32	M8	13	2000	3000	25	75	157

### Material

High-resilience polyamide based (PA) technopolymer. Resistant to solvents, oils, greases and other chemical agents.

### Colour

White similar to RAL 9002, glossy finish.

### Standard execution

AISI 303 stainless steel bosses, threaded holes.

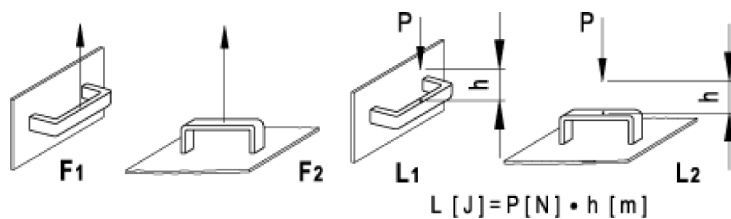
### Features and applications

Thanks to its white colour and glossy finish, this handle is particularly suitable for applications on medical and hospital equipment and on food processing machines whose parts, for hygienic reasons, must be frequently cleaned. Its solid shape without cavities prevents unhealthy residues from depositing.

### Technical data

Tensile stress and impact strength: F<sub>1</sub>, F<sub>2</sub>, L<sub>1</sub> and L<sub>2</sub> values reported in the table are the result of breaking tests carried out with the appropriate dynamometric equipment under the test conditions shown in the figure with ambient temperature.

The tests have revealed that the special technopolymer used can absorb very strong shocks, with no damages, thanks to its high-resilience.



**STANDARD MACHINE ELEMENTS WORLDWIDE**

ELESA models all rights reserved in accordance with the law. Always mention the source when reproducing our drawings.