

EBP.

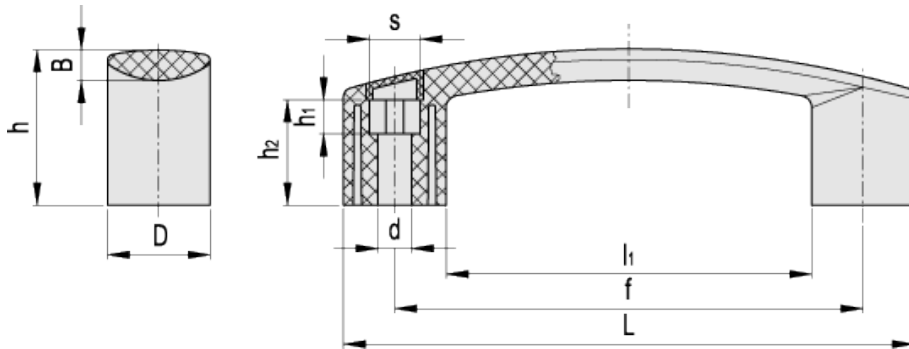
Bridge handles front mounting



ELESA Original design



ERGOSTYLE®



* Complete with colour index, example: 260111-C2 EBP.110-6-C2

C1 RAL7021
 C2 RAL2004
 C3 RAL7035
 C4 RAL1021
 C5 RAL5024
 C6 RAL3000

Ergostyle		Main dimensions						Mounting holes				F ₁	F ₂	L ₁	L ₂	Weight
Code	Description	L	f	D	h	B	l ₁	d	s	h ₁	h ₂	[N]	[N]	[J]	[J]	g
260111-*	EBP.110-6-*	116	93.5±0.5	22	35	7.5	72	6.5	10	6.5	23.5	2000	1500	8	3	35
260210-*	EBP.140-6-*	144	117±0.5	26	39	8.5	92	6.5	10	19.5	26.5	2700	1800	10	4	57
260211-*	EBP.140-8-*	144	117±0.5	26	39	8.5	92	8.5	13	8.5	26.5	2700	1800	10	4	55
260251-*	EBP.150-8-*	159	132±0.5	27	42	9.5	105	8.5	13	10.5	28	2700	1800	11	4	65
260311-*	EBP.180-8-*	178	150±1	28	45	9.5	122	8.5	13	14	32	2700	1500	12	5	78
260411-*	EBP.200-8-*	208.5	179±1	28.5	51	9.5	150.5	8.5	13	16	35	2200	1500	16	9	95
Code	Description	Caps for														
29830-*	ECA.B0-*	EBP.110														
29831-*	ECA.B1-*	EBP.140 EBP.150 EBP.180 EBP.200														

* Complete with colour index (C1,.....,C6).

Material

Glass-fibre reinforced polyamide based (PA) technopolymer. Resistant to solvents, oils, greases and other chemical agents.

Colour

Grey-black, matte finish.

Caps

Technopolymer in Ergostyle colours, matte finish. Supplied with the handle, press-fit assembly, removable by a screwdriver. Available also as accessories sold separately (see table).

Standard execution
Pass-through holes for cylindrical-head screws with hexagon socket.

Features and applications

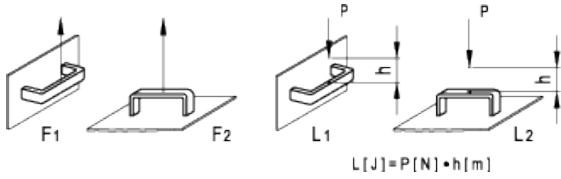
EBP. handles with front mounting can be assembled in pairs opposed to EBP.B handles with back mounting (Fig. 1).



Fig.1

Technical data

Tensile stress and impact strength: F1, F2, L1 and L2 values reported in the table are the result of breaking tests carried out with the appropriate dynamometric equipment under the test conditions shown in the figure with ambient temperature.



STANDARD MACHINE ELEMENTS WORLDWIDE

ELESA models all rights reserved in accordance with the law. Always mention the source when reproducing our drawings.