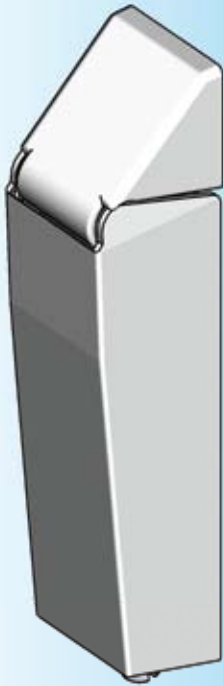




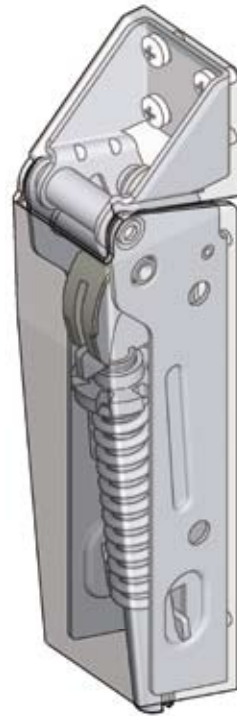
RL



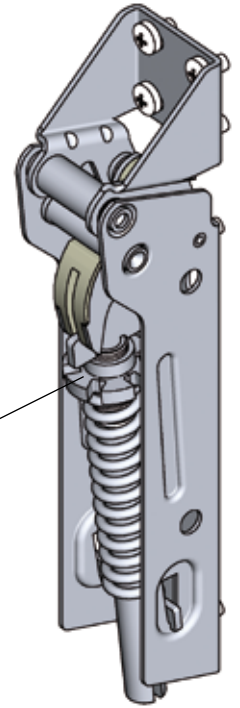
Application area:
The spring-loaded hinge is applicable with refrigerators, e.g.

The covers can be put on after assembling of the hinge.

*Weight of the lid homogeneously distributed

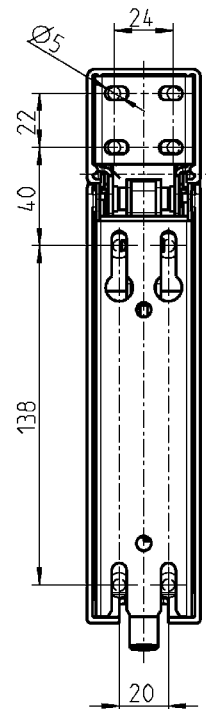
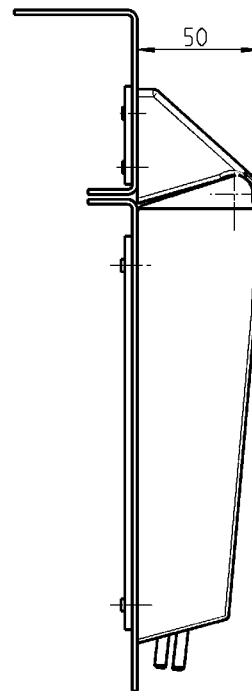
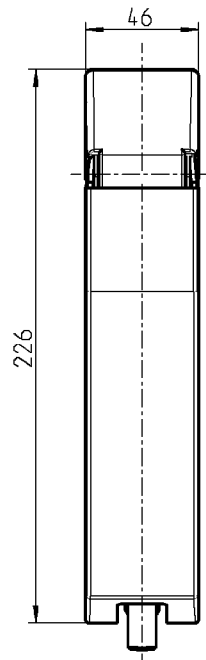


Transparent display of the covers



Picture without covers

The torque can be adjusted by means of the adjusting nut.



Spring-loaded hinge m.s. zinc plated, link polyamide, covers polystyrene white, with one or two springs

for a weight of the lid of approximately 6 kg with two hinges

1715-U331

for a weight of the lid of approximately 17 kg with two hinges

1715-U332

for a weight of the lid of approximately 23 kg with two hinges

1715-U333