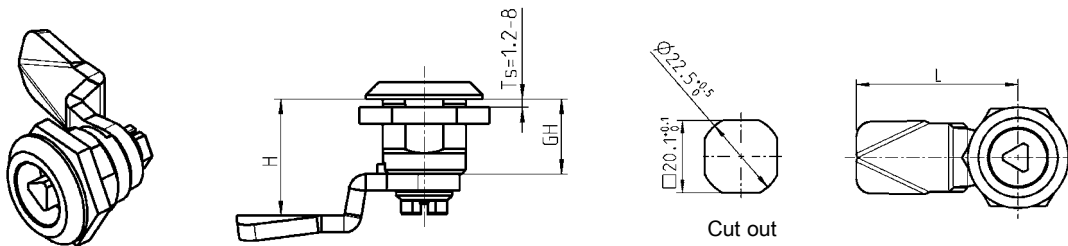


Quarter turn; Housing GH = 18 and 30 - 60; Insert; Seal

PROGRAM 1000



Housing with nut or earthnut m.s.zinc plated

Head diameter GH = 18 mm Head height								
	Nut	Earthnut	Nut	Earthnut	Nut	Earthnut	Nut	Earthnut
zinc die chrome pl.	1000-U45	1000-U56	1000-U47	1000-U55	1000-U7	1000-U54	1000-U330	1000-U332
Zinc die chrome plated (with foamed seal)	1000-U45-G	1000-U56-G	1000-U47-G	1000-U55-G	1000-U7-G	1000-U54-G	-	-
Zinc die black powder coated	1000-U223	1000-U224	1000-U221	1000-U222	1000-U219	1000-U220	1000-U331	1000-U333
Zinc die black powder coated (with foamed seal)	1000-U223-G	1000-U224-G	1000-U221-G	1000-U222-G	1000-U219-G	1000-U220-G	-	-
Polyamide GF black	1000-U155	-	-	-	1000-U46	-	-	-
Polyamide GF black (with foamed seal)	1000-U155-G	-	-	-	1000-U46-G	-	-	-
Stainless steel AISI 304 (with foamed seal)	1000-U134	-	-	-	-	-	-	-
Stainless steel AISI 316 (with foamed seal)	1000-U530	-	-	-	-	-	-	-

Insert zinc die, polyamide or stainless steel, fixing material m.s. zinc plated or stainless steel

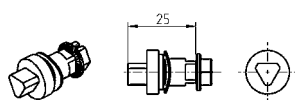
Zinc die chrome plated

Zinc die black

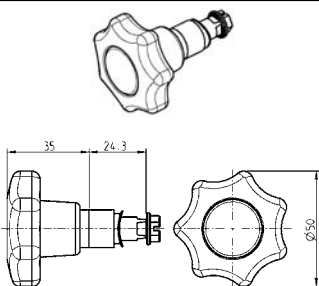
Polyamide 66 GF 50 black

Stainl. steel AISI 304

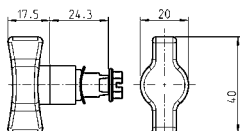
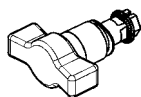
Stainl. steel AISI 316



Insert



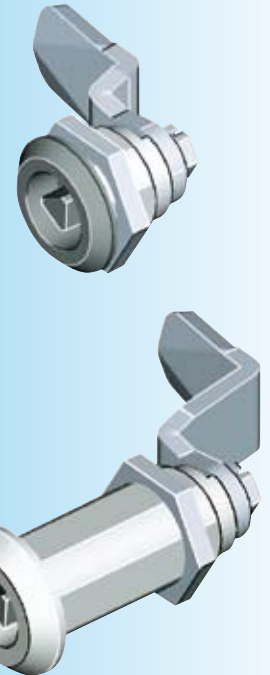
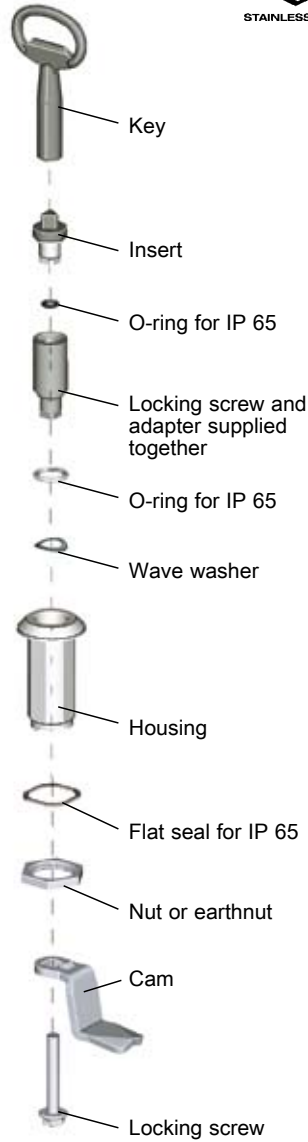
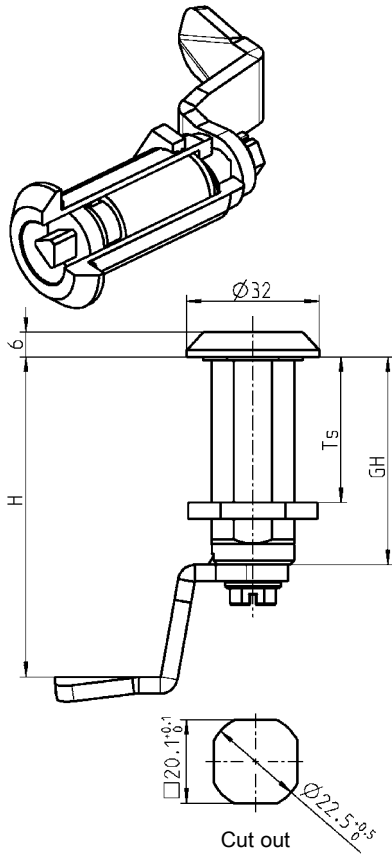
Star handle



Wing knob

Square 6	1000-U17	1000-U322	-	1000-U351	-
Square 7	1000-U1	1000-U323	1000-U184-N	1000-U135	1000-U531
Square 8	1000-U2	1000-U324	1000-U185-N	1000-U136	1000-U532
Square 8 slotted	1000-U18	-	-	1000-U352	-
Triangular 6,5 CNOMO	1000-U197	-	-	-	-
Triangular 7	1000-U3	1000-U325	-	1000-U334	1000-U536
Triangular 8	1000-U4	1000-U326	1000-U186-N	1000-U335	1000-U537
Triangular 9	1000-U194	-	-	-	-
Triangular 10	1000-U249	-	-	-	-
Double bit 3	1000-U5	1000-U327	1000-U187-N	1000-U183	1000-U533
Double bit 5	1000-U6	1000-U328	1000-U188-N	1000-U137	1000-U534
Hexagon female 10	1000-U96	-	-	-	-
Square female 6	1000-U168	-	-	-	-
Square female 7	1000-U182	-	-	-	-
Square female 8	1000-U169	-	-	-	-
Daimler Benz	1000-U20	-	-	-	-
Slot 1,2 x 3	1000-U195	-	-	-	-
Slot 2 x 4	1000-U142	1000-U329	1000-U196-N	1000-U630	1000-U631
Slot 2 x 4 coinproof	1000-U738	1000-U739	-	-	-
Crown type	1000-U336	-	-	-	-
Eastern Europe Ø 13	1000-U509	-	-	1000-U729	-
Hexagon female with pin	1000-U757	-	-	1000-U757-01	-
			Polyamide GF / Zinc die black	Polyamide GF black / AISI 304	
Star handle	-	-	1000-U13	1000-U138	-
Wing knob	-	-	1000-U78	1000-U510	-

Assembling instruction



IP 65 with:	
Flat seal	1000-23
O-ring	1000-24
IP 66 with:	
Seal-set	1000-U769
IP 69K with:	
* Seal-set	1000-U841
Assembly on request:	
without O-ring	1000-990
with O-ring	1000-991

Housing material on choice nut or earthnut m.s. zinc plated						
GH	Ts 1,5 –	Zinc die chrome plated		Zinc die black powder coated		polyamide black Nut
		Nut	Earthnut	Nut	Earthnut	
30 mm	20 mm	1000-U51	1000-U65	1000-U225	1000-U226	–
– adapter				1000-U164		
36 mm	26 mm	1000-U246	1000-U248	1000-U317	1000-U318	–
– adapter				1000-U198		
40 mm	30 mm	1000-U66	1000-U67	1000-U227	1000-U228	1000-U737
– adapter				1000-U165		
50 mm	40 mm	1000-U68	1000-U69	1000-U229	1000-U230	1000-U736
– adapter				1000-U166		
60 mm	50 mm	1000-U504	1000-U505	1000-U506	1000-U507	–
– adapter				1000-U535		

* Seal-set only complete assembled with housing, insert and cam available

Note:
Quarter turn assembling 1B-105

Further parts see page

- Housing 1B-760
1B-680
1B-820
- Quarter turn with stepped cam 1B-240
- Cam 1C-120
up to 1C-220
- Accessories from 1C-220
- Insert with wing knob 1B-720
- Escutcheon 3B-140
- Door lock prominent 12A-220
- Key 12B-120