

Instruction Guide 11

# QUARRY TILES, VICTORIAN AND MINTON FLOORS

Highly vitrified clay tiles.

Quarry tiles have been used on floors and walls for centuries. As with all natural materials, it does require a certain level of care. The following instructions are a guide to help ensure that your tiles will remain protected and easy to clean for many years.

**NOTE: Ensure that surfaces are sealed before grouting.**

## THE 3 STEP INSTRUCTION OVERVIEW (see page 2 for more information)

1

### LTP Grout Stain Remover or LTP Colour Intensifier & Stainblock

Coverage 1 litre/25m<sup>2</sup>



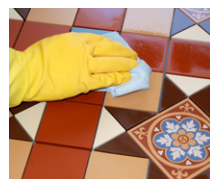
### INITIAL SEAL AND CLEANING OF NEWLY INSTALLED SURFACES (used surfaces see page 2).

**LTP COLOUR INTENSIFIER & STAINBLOCK:** Helps prevent staining from grout and cement residues.

**LTP GROUT STAIN REMOVER:** Cleans and removes dried on cement and grout residues.



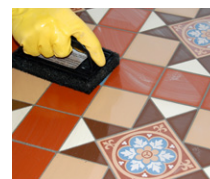
Surfaces must be dry. Under floor heating should be off. Apply sealer to the surface.



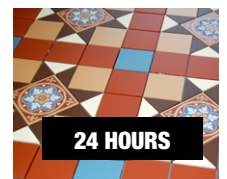
Within 30 minutes work excess sealer off the surface.



Grout joints after 2 hours.



If necessary remove any dried on grout residues with LTP Grout Stain Remover.



Allow the surface to dry.

**EQUIPMENT:** Bucket, mop, scrubber or scrubber dryer machine if available.

2

### LTP Glaze Protector or LTP Colour Intensifier & Stainblock

Coverage 1 litre/10m<sup>2</sup>

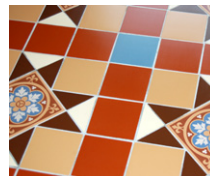


### PROTECT AGAINST STAINS (for more information see page 2).

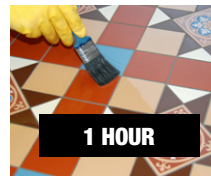
**LTP GLAZE PROTECTOR:** Satin finish – protects against water, oil, grease, dirt, grime and aids maintenance.



Apply several thin coats of LTP Glaze Protector using a soft cloth or applicator. Allow 30 minutes between coats.



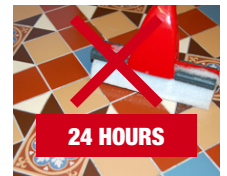
Leave to dry. Do not buff. Light traffic for 24 hours.



Alternatively apply a further coat of LTP Colour Intensifier.



Within 30 minutes work excess sealer off the surface.



Protect from water for 24 hours and do not wash surfaces for at least 3 days.

### ENHANCED NATURAL APPEARANCE

Finish with a further coat of LTP Colour Intensifier & Stainblock. Enhanced natural finish. Used as an alternative to LTP Glaze Protector. This product will enhance the appearance without creating a sheen and protect against water, oil, grease, dirt, grime and aid maintenance.

**EQUIPMENT:** Bucket, applicator, brush, sponge.

2b

3

### LTP Waxwash or LTP Floorshine



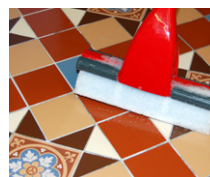
### REGULAR MAINTENANCE (for more information see page 2).

**LTP WAXWASH:** Maintains surfaces sealed with LTP Colour Intensifier & Stainblock.

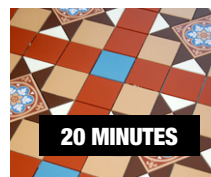
**LTP FLOORSHINE:** Maintains surfaces sealed with LTP Glaze Protector.



Add one capful of product per litre of water in a bucket.



Wipe surface with the solution. Do not rinse.



Allow to dry. Do not walk on the surface during drying time – 20 minutes.

A one litre LTP Waxwash or LTP Floorshine will wash a 20 sq.m floor 40 times.

**EQUIPMENT:** Bucket, mop.

Always read the product label before proceeding.

**NEWLY INSTALLED SURFACES**

**AFTER GROUTING:** Some residual grout will normally remain on the surface of the tiles. For best results use LTP Grout Stain Remover to wash the surface before sealing.

**1 CLEANING AND REFURBISHING – Used and heavily soiled surfaces**

- Before sealing the surface must be thoroughly cleaned. Old layers of sealer, residues from aftercare products and deposits must be removed from the surface and pores of the tiles. Any film forming layers of sealer should be removed with LTP Solvex before washing with LTP Grimex.
- Dilute LTP Grimex 1:3 with water, apply to the surface with a sponge or water brush and leave to sit on the surface of the tiles for as long as it takes for the dirt to release. 5-30 minutes depending upon the level of dirt.
- Agitate the surface with a nylon pad or scrubbing brush and leave for a further 5 minutes (scrubber machines can be used).
- Continue to scrub while adding clean water. Remove residues from the surface using a cloth or scrubber dryer machine.
- Rinse thoroughly with clean fresh water to remove all remaining residues.
- Allow the surface to dry for a minimum of 24 hours before applying the protective seal.
- For the removal of other types of dirt refer to the table below.
- If you are unsure please call our helpline for advice.

**OTHER TYPES OF DIRT**

Care product residues, oil, grease and dirt	LTP Grimex or LTP Power Stripper
Wax and acrylic layers, tar, paint, bitumen residues	LTP Solvex and then LTP Grimex
Deeply engrained oil stains	LTP Spot Stain Remover and LTP Fullers Earth

**2 PROTECTIVE SEAL TREATMENTS**

- LTP Colour Intensifier & Stainblock or LTP Glaze Protector will render the surface water and oil repellent.
- These products prevent staining, aid cleaning and simplify the removal of surface stains.
- LTP Colour Intensifier & Stainblock will provide a barrier of protection with an enhanced matt finish.
- LTP Glaze Protector provides a hard wearing satin sheen.
- There are no health concerns once these products have properly cured.
- LTP Colour Intensifier & Stainblock sealer is micro porous and so can be used on surfaces that have no damp proof course.
- LTP Colour Intensifier & Stainblock is a suitable for internal and external use. LTP Glaze Protector is for internal use only.
- If surfaces are properly maintained we recommend touching up the protective treatment every 3-4 years.

**NB.** Always test the product on an inconspicuous area. Wet or non absorbent surfaces cannot be treated. LTP Colour Intensifier & Stainblock is an impregnator which needs to fully absorb. Do not allow the product to dry on the surface. Carefully buff with a soft cloth or machine to remove any excess. Remove unabsorbed impregnating sealer, if left to dry on the surface, by rubbing over with a little more sealer. Some tiles may be darker after application. LTP Glaze Protector is film forming and leaves a sheen on drying. Do not rub or buff.

**3 MAINTENANCE**

**LTP WAXWASH (for floors)**

Formulated for use on unglazed tiles such as travertine, stone, limestone, slate, terracotta and quarry. Ideal for washing floors sealed with LTP Colour Intensifier. Use routinely in place of normal detergent.



**LTP FLOORSHINE (for floors)**

Cleans and protects in one application. Used routinely it will reinforce protection offered by LTP Glaze Protector.



**NB.** Always follow the detailed instructions on the product labels. Avoid using normal detergents or strong bleach cleaners on sealed surfaces as they will gradually remove the protective seal.

This information is offered without guarantee. The material should be used so as to take account of the local conditions and the surfaces to be treated. In case of doubt, the product should be tried out in an inconspicuous area. © Copyright A.M.Robb Ltd. 2012



*for beautiful surfaces we have the solutions*

LTP, Tone Estate, Milverton Road, Wellington, Somerset, TA21 0AN

T +44 (0) 1823 666213 F +44 (0) 1823 665685 E [info@ltp-online.co.uk](mailto:info@ltp-online.co.uk)

