

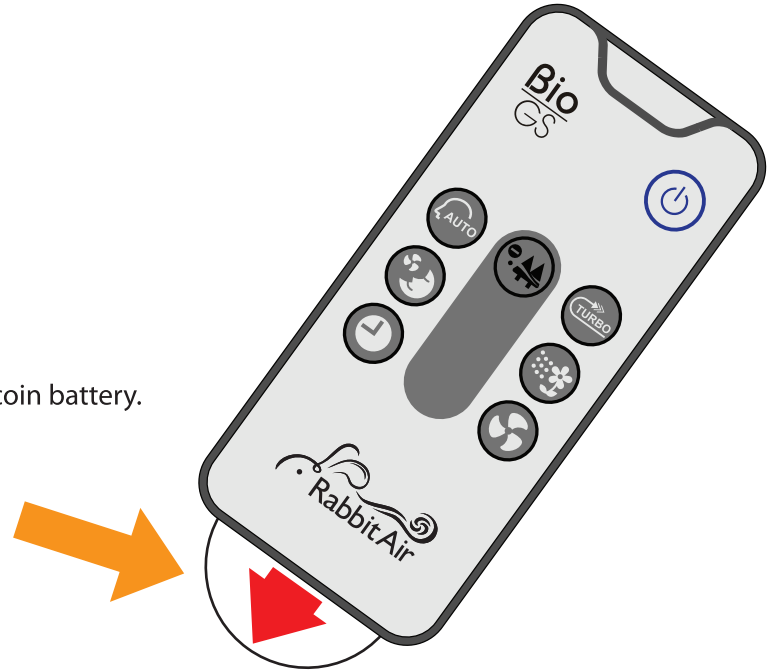
Remote control



Lithium coin battery (3V)



- ▶ The battery is pre-installed with a 3V lithium coin battery. Please remove clear tab to begin use.



BATTERY INFORMATION

- The battery for this remote control is for initial use only and will need to be changed.
- Incorrect usage of the battery may cause battery fluid leakage and/or damage.
- When replacing battery, always use a 3V lithium coin battery.
- When the unit will not be used for an extended period, remove the battery from the remote to prevent battery fluid leakage.

