

INSTALLATION INSTRUCTIONS FOR CAMBRIDGE GATES

STEP 1

Tools required

- Hammer Drill
- Ø10mm Masonry Drill bit & 14mm Steel/masonry
- No.13 & 19 Spanner
- Hammer
- Pencil
- Tape measure
- Level – (Optional)



STEP 2

Use the following formula to determine how far the threaded hinges need to go into the Gate frame.

Opening width (XXX) – Gate Frame (865mm)
Clearance for the shoot bolt
(Approx. 20mm) – Hinge plate (25mm).

For Example:

For an opening width of 965mm equates to:
965mm subtract $(865 + 20 + 25) = 55\text{mm}$ –
Distance from the Gate frame to centre of
threaded hinge.

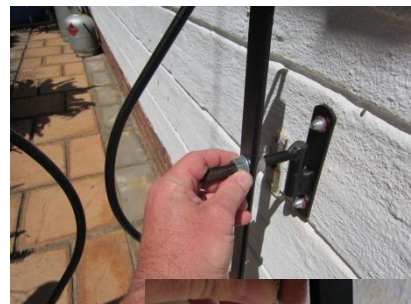


STEP 3 (a & b)

Place the 2 threaded hinges through the holes in the gate frame and make “finger tight” at the measurement worked out above. (They should both face down for ease of installation).

If you are nervous that someone can lift the gate off the hinges, place one hinge up and the other hinge down.

(a)



(b)



STEP 4

Balance the gate on a suitable spacer (Brick or block of wood etc.). This will ensure there is enough clearance at the bottom of the gate when opening and closing.



STEP 5

Fit the top hinge plate into the threaded Hinge and hold against the wall. Mark the holes that will need to be drilled.



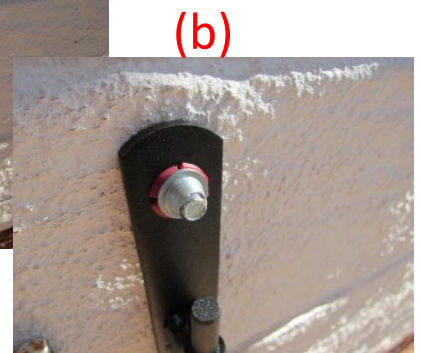
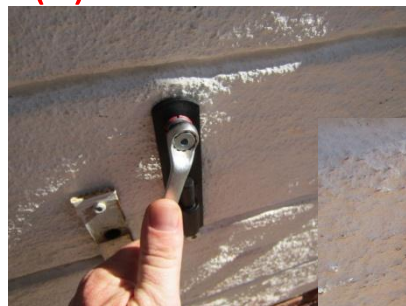
STEP 6

Put the gate aside then drill out the top Holes. Once done, place the hinge plate over the holes and hammer in the plastic plugs provided.



STEP 7 (a & b)

Screw the Snap off nuts onto the Bolts, and add washer. (a) Using a 13mm Spanner tighten the hinge plate onto the wall. (b) Then snap off the nut by tilting the spanner upwards



STEP 8

Place the gate into position so the weight is taken on the top hinge. Place the bottom hinge in position. (The weight of the gate will keep the hinge in position making things a little easier for you). Using a level ensure the gate is vertical. Repeat Steps 5 – 7)



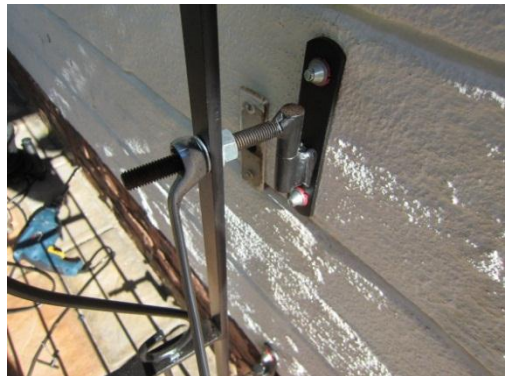
(a)



STEP 9 (a & b)

(a) Place the level on the outside frame (above the shoot bolt) and check that the gate is square. (b) Adjust the threaded hinge nuts accordingly then tighten with the 19mm Spanner.

(b)



STEP 10

Close the gate and mark the shoot bolt against the wall/Pole with a pencil – Then drill using a 14mm masonry or steel drill bit.

