

1. PICK A
PENDANT



2. PICK A
NECKLACE



3. CREATE YOUR
LOOK

Seasons Jewelry

SPRING 2014

WHAT'S NEW FROM SEASONS IN 2014

Happy New Year from all of us at Seasons. We are quite excited about our Spring 2014 line. In addition to our ever popular Signature clip-on pendants, we are branching out to offer variety, fresh looks, and a one-stop shopping experience for our loyal customers.

We know you'll love our new Toggle Charm Pendants which are interchangeable and the stylish fashion line which features Trends & Treats and a touch of glamour with our new Statement Necklaces in the color combinations your customers want.

Gameday by Seasons continues to evolve as we source new manufacturers and concepts, continue to add new licensed schools and designs, and create game day looks in school colors that can be worn for high school, college, or pro events. Stay tuned for more info to come!

We are dedicated to bringing you an affordable quality product with great sell-through potential and you may notice that we have some new concepts and prices which will help us achieve that goal. We value your business and friendship and want to be your source for Gameday, Holiday & Everyday jewelry all year 'round!

Have a great 2014 and we look forward to prosperity for both of our companies.

Best Regards.

Bonnie & Dick



Toggle

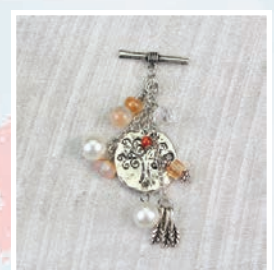
A fresh and fun twist on our interchangeable jewelry, these new Toggle Charm Pendants slip into our coordinating necklaces, which feature a toggle ring. Your customers will love creating their own trendy look!



**Toggle Pendant
T01 •**



**Toggle Pendant
T02 •**



**Toggle Pendant
T04 •**



**Toggle Pendant
T03 •**



**Earrings
E1 •**

Seasons Jewelry



18 inches or
32 inches

Necklace
N18G •
N32G •
also available in silver



Necklace
N16G •
N28G •

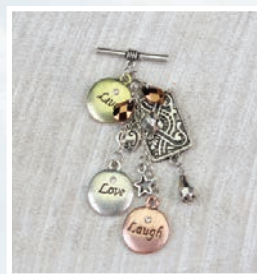


Toggle Pendant
T05 •



18 inches or
30 inches

Necklace
N18PS •
N30PS •



Toggle Pendant
T06 •

**CHECK OUT OUR
WEBSITE**

FOR MORE GREAT PRODUCT

www.seasonsjewelry.com



Toggle Pendant
T07 •



Toggle Pendant
T08 •



Necklace
N18PG •
N30PG •

SPRING 2014

signature
CLIP-ON
 pendants

Spring



Pin/Pendant
 XLBG •



Pin/Pendant
 XRB3 •

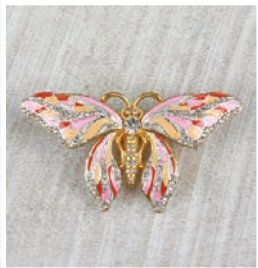


Pin/Pendant
 XEGG •



Pin/Pendant
 XHMG •

**NEW
 DESIGNS**



Pin/Pendant
 XBF •



Clip-on Pendant
 XBF1 •



Clip-on Pendant
 XDF •

**2013
 BEST
 SELLER**



22" Stretch Necklace
 NSLB1 •

**2013
 BEST
 SELLER**



Clip-on Pendant
 XRB •



Earrings
 ERB •



Pin/Pendant
 XDW •

Seasons Jewelry



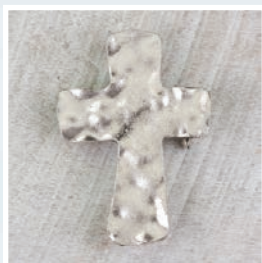
17" Necklace
N17G •



Clip-on Pendant
XCRG •



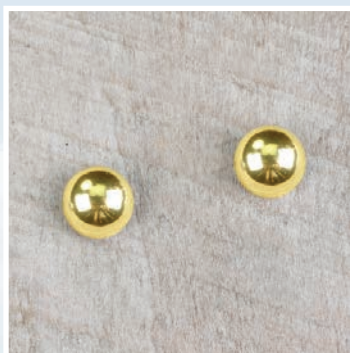
Earrings
ECRG •



Clip-on Pendant
XCRS •



Earrings
ECRS •



Stud Earrings
EG2 •

CHECK OUT OUR
WEBSITE
FOR MORE GREAT PRODUCT
www.seasonsjewelry.com



Clip-on Pendant
XCR01 •



17" Necklace
N17S •



Earrings
ECR01 •

SPRING 2014

signature
CLIP-ON
 pendants

Valentines

CHECK OUT OUR
WEBSITE
 FOR MORE GREAT PRODUCT
www.seasonsjewelry.com



Clip-on Pendant
 XH9 •



Stud Earrings
 EHS •



Stud Earrings
 EH •



Clip-on Pendant/Pin
 XH8 •



16" Stretch Necklace
 NSLB •



Stretch Ring
 RH10 •



Earrings
 EH10 •



16" Necklace
 NH10 •



Clip-on Pendant
 XH10 •

Seasons Jewelry



Earrings
ESSR2 •



Clip-on Pendant
XSSR2 •



17" Necklace
NSSR2 •



17" Necklace
N17CB •



18" Stretch Necklace
NS18 •



Bracelet Trio
BH3 •

←
SOLD AS A
"SET OF 3"
WEAR ONE OR
WEAR ALL 3



18" Stretch Necklace
NB18 •

SPRING 2014

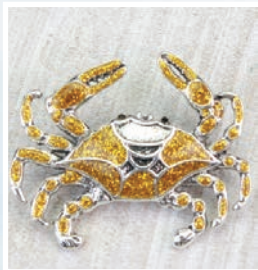
signature
CLIP-ON
 pendants

Nautical

CHECK OUT OUR
WEBSITE
 FOR MORE GREAT PRODUCT
www.seasonsjewelry.com



Clip-on Pendant
 XCRB2 •



Clip-on Pendant
 XCRB3 •



Clip-on Pendant
 XSND •



Earrings
 ESND •



Clip-on Pendant
 XANC2 •



16" Necklace
 NANC2 •



Earrings
 EANC2 •



Clip-on Pendant
 XWHL •

**2013
 BEST
 SELLER**



18" or 36" Necklace
 N18D •

Wear it doubled at 18" or long at 36"



Clip-on Pendant
XSB •



Earrings
ESB •



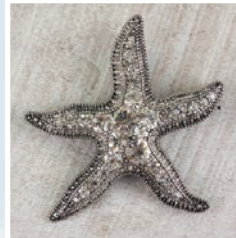
16" Necklace
NSB •



Clip-on Pendant/Pin
XSHLS •



Earrings
ESTF •



Clip-on Pendant
XSTF1 •



4 sets of earrings
with posts and
hooks for \$8.00

Interchangeable
Earrings
EANAU •



Earrings
EFSH2 •

2013
BEST
SELLER



Clip-on Pendant
XFSH2 •



18" Necklace
N18S •



Clip-on Pendant
XLH •

Seasons Jewelry

SPRING 2014

signature
CLIP-ON
 pendants

Fashion



Clip-on Pendant
 XSQ •



Clip-on Pendant
 XCIR10 •



Clip-on Pendant
 XMONS •



Clip-on Pendant
 XMONG •



Leather Snap Bracelet
 BCR1 •



18" Necklace
 NCR6 •



17" Necklace
 N17CBR •



24" Necklace
 NCR5 •



Earrings
 ECR3 •



Bracelet
 BCR4 •

**CHECK OUT OUR
 WEBSITE**
 FOR MORE GREAT PRODUCT
www.seasonsjewelry.com

**NEW
 DESIGNS**

Turquoise



Clip-on Pendant
XCR •



Clip-on Pendant
XTQ1 •



Earrings
ETQ •



Clip-on Pendant
XTQ2 •



Earrings
ETQ2 •



Clip-on Pendant
XTQ5 •



Clip-on Pendant
XTQ4 •



Earrings
ETQ4 •



Turquoise Stretch Bracelet
BCR3 •



Clip-on Pendant
XTQ3 •



Stretch ring
RTQ3 •



Earrings
ETQ3 •

Seasons Jewelry

SPRING 2014

Make a Statement

CHECK OUT OUR
WEBSITE
FOR MORE GREAT PRODUCT
www.seasonsjewelry.com



**Shades of Blue
Necklace
YNCH02 •**



**Pearl 3 Strand
Necklace
YNCH03 •**



**Ivory/Gold
Necklace
YNCH05 •**



**Open Flower
Necklace
YNCH06 •**



**Tri-Color 3 Strand
Necklace
YNCH04 •**



Seasons Jewelry

SPRING 2014



**Coral Stone
Necklace
YNCH08 •**



**Black/Pearl
Necklace
YNCH11 •**



**Turquoise Drop
Necklace
YNCH12 •**



**Coral/Navy
Necklace
YNCH10 •**



**Ivory/Coral
Necklace
YNCH09 •**



**Silver Link
Necklace
YNCH07 •**

COLLEO



Gameday by Seasons continues to evolve as we source new manufacturers and concepts, continue to add new licensed schools and designs, and create game day looks in school colors that can be worn for high school, college, or pro events. Stay tuned for more info to come!

View our full product line for each school online at

www.seasonsjewelry.com



OVER 40 SCHOOLS AVAILABLE

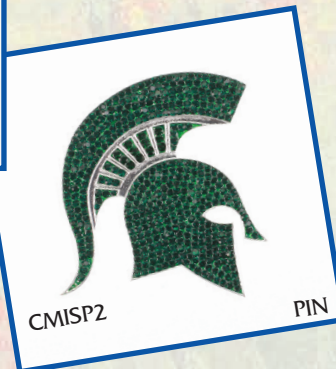
G I A T E

by Seasons

Seasons Jewelry



TRIO'S
SOLD AS
"SET OF 3"
WEAR ONE OR
WEAR ALL 3



SPRING 2014

Seasons Jewelry

Terms and Conditions

Order & Credit Policies

Minimum Opening Order: \$200.00

Minimum Reorder: \$100.00

Minimum Quantity: 3 per item unless otherwise noted.

Shipping

All orders are shipped UPS Ground or FedEx Collect.

Terms

Credit Card preferred.

(Visa, MC, AmEx, Discover)

30 day net available AFTER initial order with credit approval.

Back Orders

Will be cancelled after 60 days or if under \$50.00

Returns

All returns must be authorized by our customer service department within 14 days of delivery. Please call 866-382-0737 for return authorization.

A restocking fee of 25% may be applied at the discretion of

Seasons Jewelry

Seasons Jewelry
616 South Main Street
Springfield, TN 37172
866-382-0737 (tel)
800-929-7956 (fax)