

NEW Pivot Block Bolt



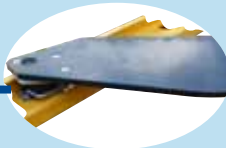
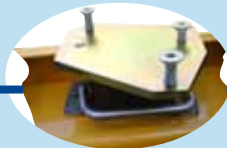
One of the biggest problems you have when tightening the bolt on the pivot block is getting into the bolt head to tighten it. This new design allows you to tighten from the bottom and with the lock tight added to the tray bolt it will stay tight. No coming loose, saving you money



Easy access
Makes the impossible easier to do



Lock Tight
added to the Tray Bolt



NEW
Pivot Block
Kit