

how-to HIGHLIGHT

by Brushes

before



after



forehead

Start off by dusting your favourite highlight on the middle of your forehead using Duo-Fibre Fan.



cheekbones

For a subtle glow, sweep highlight onto cheekbones using Duo-Fibre Fan.

For extra control and targeted shine, use Precision Highlighter on the high points of your cheeks.



chin

To highlight the chin, use Precision Highlight for a targeted shine.



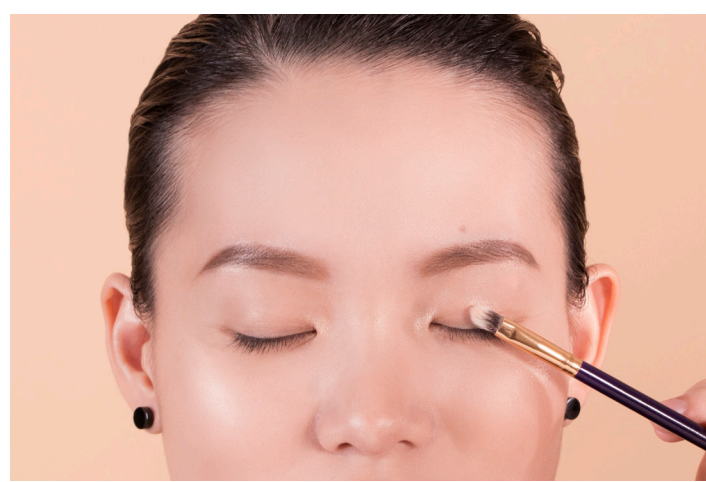
nosebridge

To create an illusion of a higher nosebridge, apply highlight using Precision Highlighter. Steer clear from highlighting the tip of your nose to avoid an appearance of a larger nose.



corner of the eyes

Apply highlight to the inner corner of the eyes using Detail Shader to help brighten the face and widen the eyes.



middle of lids

To open up the eyes, pat some highlight on the middle of the lids using Detail Shader.



brow bone

For a mini brow lift, use Detail Shader to apply highlight on the brow bone.



cupid's bow

Add a tiny amount of highlight with Detail Shader on your cupid's bow for an illusion of fuller lips.

for the perfect shine



Duo-Fibre Fan

for a subtle glow



Precision Highlighter

for a targeted shine



Detail Shader

for a detailed highlight

Find your brushes at
www.13rushes.com