



How do I fiberglass my Head Lug?

- Put on your gloves, sleeves, apron and mask. If you have a fan, turn it on. If you have a window open it. Make sure the temperature in your space stays above 70 F (21 C).

Push two pumps of clear epoxy and two pumps of red hardener into a plastic cup.

Mix until uniform color – about 30 seconds of sustained mixing. No streaks!

This will take 30 minutes to begin to cure. As the resin sets it will get hot. Take care not to burn yourself – once it gets warm, rinse out the resin with water and mix up a new batch.

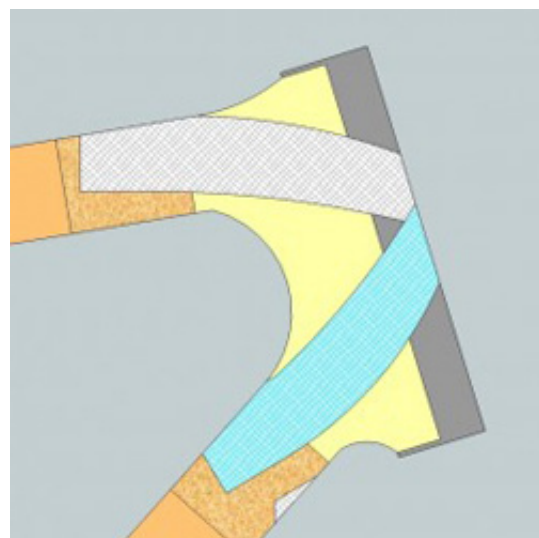
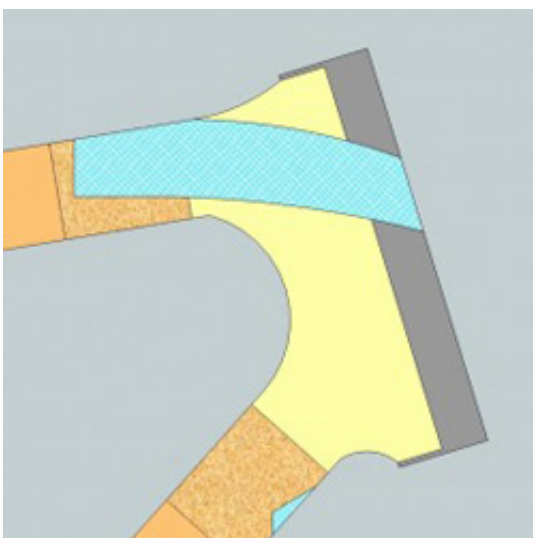
Take one of the long pieces of fiberglass. Dunk it into the epoxy.

It's very important that you make sure the fiberglass is completely wet with epoxy.

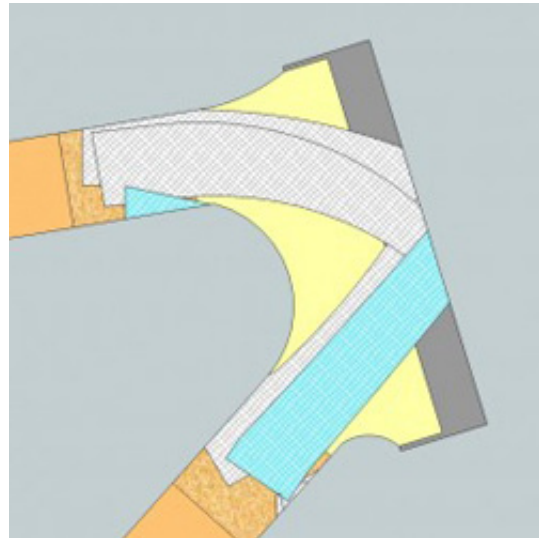
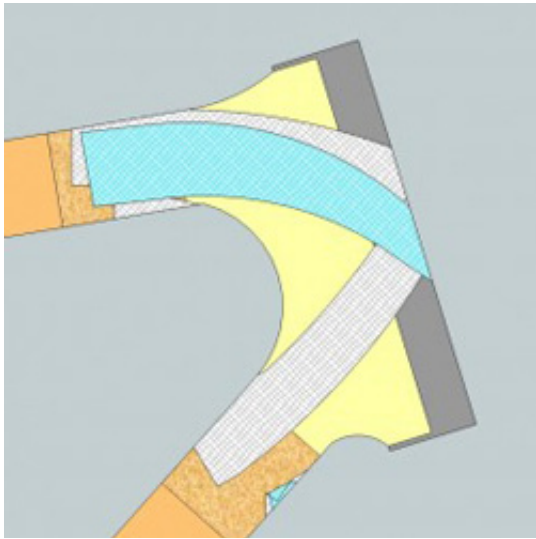
Once the whole piece is wet, use your index and middle fingers to squeeze the extra epoxy off of the fiberglass. You're trying to distribute the glue evenly over every strand in the fiberglass.

Wrap the fiberglass, starting from the roughed bamboo on the right side of the Down Tube, across the front of the Head Lug, to the roughed bamboo on the left side of the Top Tube. Use your fingers to press any air out from under the fiberglass.

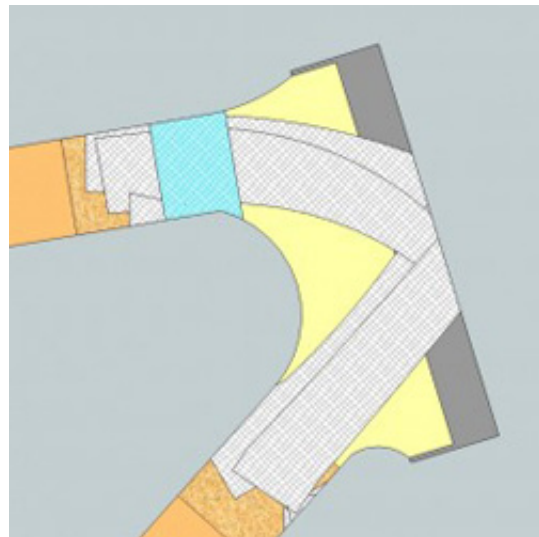
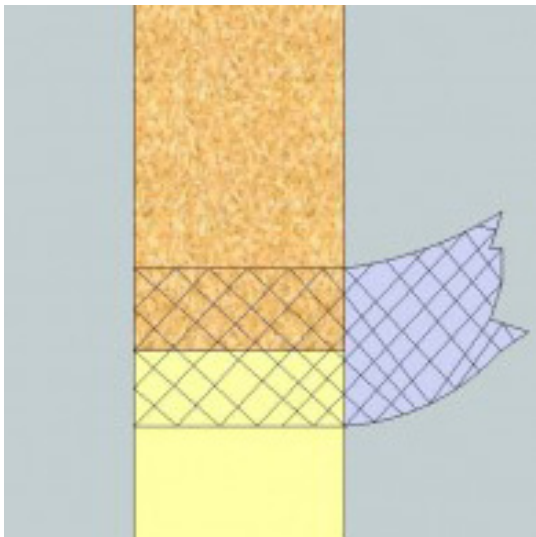
Wet another long piece of fiberglass. Wrap the fiberglass, starting from the roughed bamboo on the left side of the Top Tube, across the front of the Head Lug, to the roughed bamboo on the right side of the Down Tube. Your fiberglass should make an X across your Head Lug.



- Make a second X layer on top, using two more pieces of fiberglass. Offset the second X slightly to prevent a step forming at the edges of the fiberglass strip. Make sure to use your fingers to push all air bubbles out from these two new pieces of fiberglass.



- Take another medium piece of fiberglass. Wet it out completely. Wrap the fiberglass over the roughed bamboo, where the Down Tube meets the Head Lug, such that half of its width covers the roughed bamboo, and the other half covers the unroughed bamboo. The fiberglass should bridge the bamboo and foam, strengthening the junction.



- Take another medium piece of fiberglass and wet it out completely.

Wrap the fiberglass over the roughed bamboo, where the Down Tube meets the Head Lug, such that half of its width covers the roughed bamboo, and the other half covers the un-roughed bamboo.

- Press all the air out of the fiberglass.

