

About Us:

Your *Denise Interchangeable Knitting Needles* are the invention of Lorraine and Robert Linstead, who manufactured and sold them for over two decades. Prior to developing *Denise*, they first designed what is now called the Boye Needlemaster. However, the Linsteads were not satisfied with the design problem of needles unscrewing and discoloring, so they developed *Denise*, an improved product with a unique locking system and other features which led to a better kit for less money.

In early 2002, after over 20 years of happily using *Denise Needles*, I was looking for a gift set, and instead...I bought the company! My daughter Emily received her set from her grandmother, also a longtime *Denise* enthusiast. With our years of *Denise* knitting pleasure, we jumped at the chance to bring the next generation of *Denise Interchangeable Knitting Needles* to you.

We are a family business. My daughter, Emily, her husband, Jon, and I take care of the day-to-day operations and manufacturing details. My husband, Jim advises on technical, financial and marketing matters, and my daughter Ellen adds her artistic talents. We are a company of knitters for knitters. We hope you enjoy your *Denise Interchangeable Knitting Needles* as much as we have. We'd love to hear from you.

Sincerely enjoying knitting and hope you are too, Linda Krag

RELAX. . . . WE'RE ALL HERE

Denise Interchangeable Knitting Needles

1618 Miller School Rd.

Charlottesville, VA 22903

434-823-8234 or Toll free: 888-831-8042

Fax: 603-251-7924

Email: info@knitdenise.com

www.knitdenise.com

A Collection of Clever Tricks Your Denise Kit Can Accomplish from Cat Bordhi's web site, www.catbordhi.com

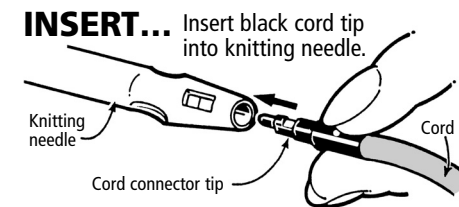
Cat is the author of *Socks Soar on Two Circular Needles*, *A Treasury of Magical Knitting*, *A Second Treasury of Magical Knitting*, *New Pathways for Sock Knitters*, and the award-winning spinning and knitting novel, *Treasure Forest*. For several free felted bag patterns designed to fit your Denise Kit and accessories, visit her web site, www.catbordhi.com

- **Tight knitters suddenly knit with ease** when they replace the left tip with a smaller size. If you have to work to push those tight stitches up your left needle, just replace that tip with a smaller size, going down as many sizes as you like. This works like a charm because your gauge is determined entirely by the right hand needle, where the new stitch is formed. The left tip is simply the delivery end.
- If you'd just like to **speed up your circular knitting**, try putting a needle several times smaller on the left side. The stitches will slide easily, giving your hands a break and your needles room to fly. See above for why this won't change your gauge. If you are knitting a Moebius (see my *Treasuries*) use a much smaller tip on the left side and your Moebius will move along its dual track very nicely.
- To **knit with a matched pair of circular needles**, you actually need only one Denise Kit. Just use the correct size tip on the ends held by your right hand. Use a smaller size tip on the left ends. See above for an explanation of why this will not change your gauge.
- **Start over in a flash!** If you need to unravel, just remove one tip and your stitches will slide off the cable in seconds so you can start fresh.
- **If your stockinette is uneven** when knitting in rows, you probably purl more loosely than you knit, as I do. But with Denise needles, you can adjust for this by using a smaller tip on the purl end of the needle. Do some experimenting, and find out if you need to go down 1, 2, or even 3 sizes. It will vary depending on the yarn and gauge. Now your back-and-forth stockinette can be as even as it is when you knit in the round.
- Would you like to **add shaping to a garment** with intricate texture or color work, but not have to insert increases and decreases? It may be gradually shaped by changing tip sizes (which can be done in seconds). For instance, to knit a shaped sweater in the round from the bottom up, begin with a larger tip, shift to the next smaller size to begin shaping, to the next smaller size after another several inches, and so on, then reverse the shaping above the waistline. Sleeves may be shaped in the same way. Row/round count will change a little, but probably not enough to make a significant difference.
- **Picking up stitches** is easiest with a smaller needle, so use a very small tip to first pick up all stitches, then change to the correct size to begin knitting.
- **Turn needles into stitch holders** in seconds by replacing tips with end buttons. When it's time for the holder to become a needle again, just trade tips for end buttons and you are ready to knit!
- **Change cable length** without moving your knitting stitch by stitch. If after lots of increasing or decreasing, you need a longer or shorter cable to fit your stitches comfortably, just remove a tip, add an extender and the new cable, slide all stitches to the new cable, remove the extender and old cable, and add the tip to the new cable.
- **Applied I-cord** can be worked easily with a short straight needle, and your Denise kit has a nice assortment of very short straight needles, that is, all the tips. Just push a soft rubber tip protector over the base of the tip so it feels comfortable in your hand. You may also use this method for casting off with a larger size tip.
- **To try on a garment in process to be sure it's working out as planned**, just add a connector and an extra-long cable (30", 40" or 52") to your needle and spread out the stitches.

Denise
INTERCHANGEABLE™
Knitting Needles

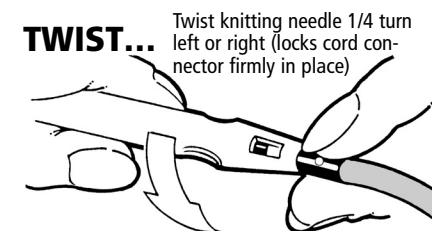
100%
USA Made

The unique *Denise* locking connection:



To attach a needle head, insert the cord connector tip into the needle. Holding the black connector tightly, twist the needle 1/4 turn until you feel the cord lock into place.

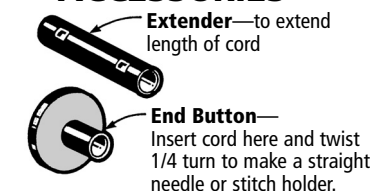
IMPORTANT:
Hold black cord connector tip, **not** the cord when locking parts into place.



To release the needle, hold the black connector firmly and twist the needle head 1/4 turn. Pull the needle off the connector.

To extend a cord length, insert the cord into an extender, twist 1/4 turn to lock into place. Lock another cord into the other end of the extender.

ACCESSORIES



Stitch holder: to store your knitting, remove needle heads and replace with end buttons.

Your kit includes:

10 pairs of needle heads: US sizes: #5-15 (3.75-10 mm)
6 cords: 5", 9", 12", 14", 16", and 19" (13, 23, 30, 36, 41, and 48 cm)
2 extenders
4 end buttons

Also available:

#17 and #19 needle heads (12 & 15 mm)
30", 40", and 52" long cords (76, 102, and 132 cm)

❖ **KNITTING PARTS GUARANTEED WITH NORMAL USE.**
Details inside...

Denise Interchangeable Knitting Needles

RELAX. . . . WE'RE ALL HERE

- ❖ **Needle sizes:** Ten pairs of 4" and 4.5" needle heads in each kit.
 - U.S. 5 6 7 8 9 10 10½ 11 13 15
mm 3.75 4 4.5 5 5.5 6 6.5 8 9 10
 - When you discover that your gauge calls for a needle one size larger or smaller than you planned, with the flexibility of *Denise Interchangeable Needles*, you'll always have the right size ready.
- ❖ **Knitting Versatility:** *Denise* is ideal for large or small projects.
 - Circular needle lengths from 17"-58" can be made using various combinations of cords.
 - Straight needles can be made by attaching a needle head to one end of the cord and an end button to the other. Straight needles will be two different lengths, which won't affect your knitting.
 - By using two different needle sizes on one circular or two straight needles, many nifty tricks can be accomplished: condo needles, perfect gauge if you purl more loosely than you knit, knitting with two circular needles rather than double points, or easily knitting tightly cast-on stitches. Check our website for other ideas.
 - Long cords are available in 30", 40" and 52" lengths. Ask for them at your local yarn shop, or see our website.
- ❖ **Stitch holders:** Each cord in the kit can be used as a stitch holder.
 - There's no need to move your knitting to a different stitch holder or waste yarn when you're knitting with *Denise*. Simply detach the needles and replace them with end buttons. Your knitting is safely held in place.
- ❖ **Comfortable to use:** No more tired wrists or knocking needle ends.
 - Flexible cords mean you always keep the weight of even the largest projects in your lap, not bunched up heavily on your needle.
 - Flexible cords also mean you can knit comfortably in seats with arms, or in tight quarters such as on an airplane.
 - For knitters with hand or wrist problems, a straightened paperclip can be inserted through the cord tips and used as a lever to lock or unlock knitting parts. (See fig. 3 opposite)
- ❖ **Neat and orderly:** It's all here when you need it.
 - The compact, sturdy case holds all the needles, cords, extenders and buttons securely in place.
 - Needles and parts always have a place to neatly return to, so no more tangle of needles or searching for stitch holders.
- ❖ **Innovative connection:**
 - *Denise Interchangeable Needles* and parts easily and securely lock into place by twisting ¼ turn.

- Most other interchangeable sets screw together, and since a screw works by turning, the natural turning of knitting can undo the connection. With the unique *Denise* locking mechanism, the connection is secure.
- ❖ **Travel friendly:** Relax while traveling with *Denise*. Just put your kit in your knitting bag and be prepared for any project you might be inspired to begin along the way. *Denise* passes easily through airport security in the U.S. and *most* countries worldwide.
- ❖ **All parts are long lasting and made in the U.S.A.** *Denise* knitters commonly report using kits that are 20-30 years old and still going strong!
- ❖ **KNITTING PARTS GUARANTEED WITH NORMAL USE.**
 - If you ever experience a problem with a part, please return it to us along with \$1.00 for return shipping. See address on back. International customers please contact us by email.

Circular needle configurations

Circular needles are measured from tip to tip. Because the length of the needle heads is 4" to 4½", simply subtract 8" from the length of circular needle your pattern calls for and you're left with the length of cord you need. You may need to round up or down, but this generally does not affect how the pattern will turn out (i.e., if your pattern calls for a 28" circular, a 27" will work just fine). To make longer circular needles, join cords together with the extenders to create exactly the length you're looking for, or purchase long cords at your local yarn shop.

Circular length desired:	Cord to use:
17"	9"
20"	12"
22"	14"
24"	16"
27"	19"

Putting the parts back in their proper places

If you're like us, most of the time your case will look half-empty because the parts are occupied in their real life's calling: knitting! Here's a diagram to help you properly stable your needles, cords, end buttons, and extenders at the end of a long and useful day.

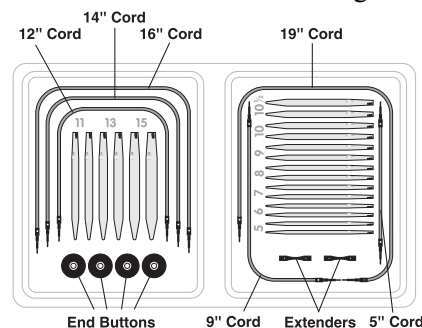
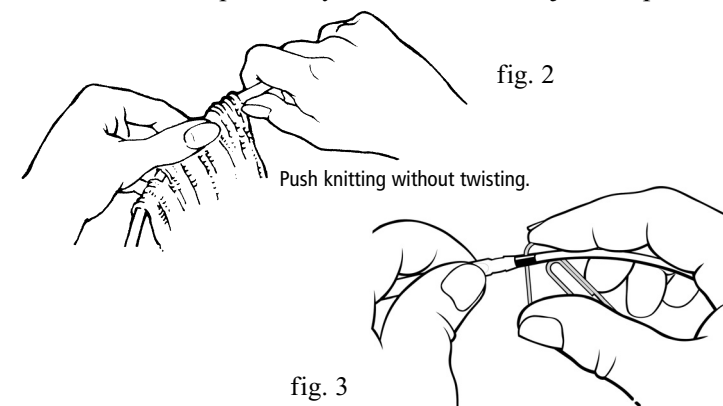


fig. 1

Caring for your Denise kit:

- If you find roughness on any knitting parts, use a fingernail buffing board or 600-grit sandpaper to smooth the surface.
- Keep your *Denise Needles* away from pets and out of the hands of very young children. However, when children are old enough, please teach them to knit!
- Your *Denise Needles* will withstand years of knitting pleasure when used only for knitting, and especially if you care for them by avoiding extreme heat and cold, and putting them back in the case when not in use.
- If you need extra leverage to lock and unlock any parts, try a straightened paperclip as shown below, or use a wide rubber band on each part like you would a rubber jar-lid opener.



A straightened paperclip can be inserted through the cord tips to give extra leverage when locking or unlocking knitting parts.

Additions to your Denise Kit:

- Extra needles, US #5-15 (3.75mm-10mm)
- #17 or #19 needles (12mm or 15mm)
- Companion Set, blue or pink: all six cords from the kit, four end buttons, two extenders
- Singles: pair of needles, 12" and 16" cords, two end buttons
- Extra cords, blue or pink: 5", 9", 12", 14", 16", or 19" (13, 23, 30, 36, 41, or 48 cm)
- Long cords, blue or pink: 30", 40", 52" (76, 102 or 132 cm)
- End button or extender
- Empty kit case, blue or pink
- Organizer: fabric case to hold Denise parts and knitting essentials

Ask for these at your local knitting shop or see our website for details.