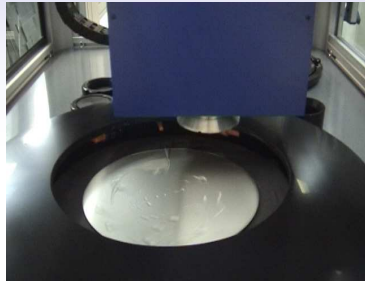
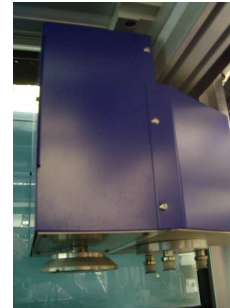


SPS Finishing Module



Wet Process



XY Finishing and Handling Head

System Overview

The SPS system consists of separate modules that can be used stand-alone or as part of an automated system. Each of these modules has a docking station for accepting the stamper from the in-line transfer system or from an operator in the case of stand-alone use. There is a common handling system within each module allowing the stamper to be moved from process to process or to other modules. This reduces operator time at the machine and improves control over the process. Data recording and management enables tracking of the stamper identity and productivity information.

Design Specification – SPS Finishing Module

- Wet Finishing system
- X/Y finishing head to produce fully variable patterns and diameters
- Programmable finishing parameters to allow maximum flexibility
- Programmable re-finishing of punched stampers
- Ra 0.03 achievable across entire data area
- Fully automatic stamper & turntable/head cleaning and drying
- Windows PC driven with networked data and data integration
- Touch screen user interface
- Automatic water level/filter change indicators

Options

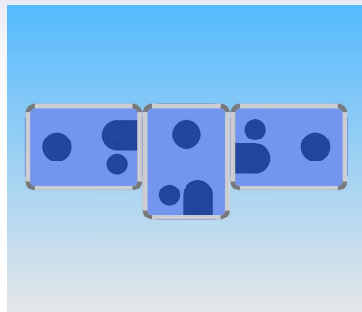
- Additional Workstation
- Auto Disc Handling x 4
- Auto Disc Handling x 8
- Multi Stamper Handling
- Bar Code Reader
- Network Connection
- In-Line Transfer System



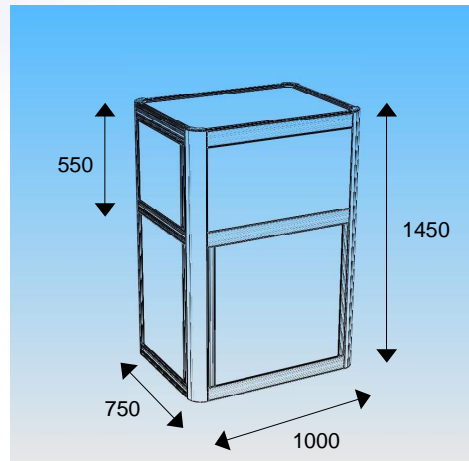
Optional in-line handling system links SPS Finisher to SPS Punch

SPS Finishing Module - Specification

SPS Finishing Module Dimensions



Modular System



SPS Finishing Module Technical Specification

Vacuum Turntable Maximum Stamper Diameter Speed of rotation	250mm (Custom diameters available on request) 0-1500rpm
Finishing Head Finishing Area Diameter Speed Pressure Finishing Pattern Finishing Cycle Times	Up to 250mm (Custom diameters available on request) 0-1500rpm 0 – 3 Bar (0-50PSI) Infinitely variable finishing pattern available Various finishing cycle time modes
Electrical Pneumatic Water	115V +/- 6% or 230V +/- 6% AC 50/60Hz Consumption 1.5KVA Minimum 6 Bar (85 PSI) Maximum 8 Bar (115 PSI) Closed loop filtration system
Weight	250kg Net
Accessories Included	Various Grades of Finishing abrasive Vacuum table mats for punched and un-punched stampers Spare/Tool Kit, Mains Leads, Operation and Maintenance Manual