



simple ear™

hear better. be your best.



**ADVANCED**

Instruction Guide

# Simple Ear vs. Hearing Aids

Simple Ear Advanced hearing device is a quality digital personal sound amplifier.

While much of the technology and function of hearing aids are similar, our goal is to amplify speech frequencies while reducing background noise for recreational, social and business use.



No prescription is needed and no adjustments required. Simple Ear products are pre-programmed, over the counter products.

## When You Want a Boost

Simple Ear products are simple to use, comfortable, inconspicuous and easy to wear and maintain. Simple Ear turns ordinary hearing into extraordinary hearing and will benefit most people looking to hear speech and other normal sounds with more clarity.

Adjusting to any new hearing device takes a little patience and a positive attitude. Your brain will need a little time to get used to using any hearing device. Use it for 3-4 hours at a time in a quieter environment when you start to get comfortable and adjust.

# Powering Your Simple Ear

*Simple Ear uses a 312 Battery.*

## TO TURN ON

With your finger, gently open the door. Insert battery and close the door. Your Simple Ear is equipped with a power on delay, so you will be given several seconds to seat the device comfortably in your ear before it turns on.

When placing the battery in your Simple Ear device, position the battery with the positive (+) side (or totally flat side) up and insert it into the battery compartment. If the battery is inserted correctly, the door will close easily.

***Do not force the door closed.***

## TO TURN OFF

Simply open the battery door completely. Store in a safe dry place.

**NOTE:** Your Simple Ear device will beep twice when your battery is running low.

**CAUTION:** Batteries are dangerous if swallowed! Keep batteries out of the reach of children. Never put batteries in your mouth for any reason - they are easily swallowed. In the event a battery has been swallowed, seek immediate medical attention.

# Inserting Your Simple Ear

Before insertion, please clean your ear and make sure the battery door is closed properly. Follow the procedure for inserting your Simple Ear device listed below:

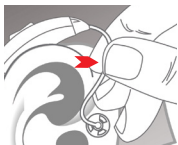


Fig. A

- Hold the tubing with your thumb and index finger close to the eartip and place the instrument over the top of the ear. (Fig. A)

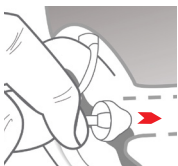


Fig. B

- Gently insert the eartip into your ear canal. (Fig. B)

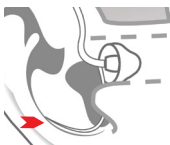


Fig. C

- Move the retention lock into position by lifting and placing it into the bowl of your ear. (Fig. C)

**NOTE:** Some irritation may occur due to becoming accustomed to wearing a hearing device. If swelling or redness occurs, discontinue use and visit your Doctor.

# Volume Adjustment

The rocker switch is both a volume control and multi-mode control. The default is volume control and operates as described below:

For all adjustments place thumb into the helix portion of your ear. Next, take your index finger and place it on the rocker switch. (Fig. 1)

Briefly push/release the top half of the switch to increase volume (Fig. 2) and bottom half of switch to decrease the volume (Fig. 3). Each short press changes the volume slightly.

Fig. 1

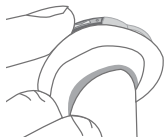
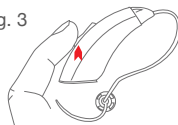


Fig. 2



Fig. 3



# MODE Adjustment

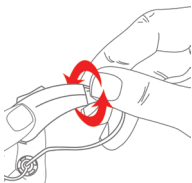
Your Simple Ear Advanced device is preset with 3 modes for different environments:

- 1 beep = Quiet place
- 2 beeps = Noisy place
- 3 beeps = Telephone mode

The modes will cycle up in sequence as you hold down the top half of rocker for 3 seconds (Fig.2). The number of beeps correspond to the mode. Find the mode that is most comfortable for you in your environment and then adjust the volume. **Note: The device automatically reverts back to the Quiet Place mode (1 beep) when you turn off your device.**

# Cleaning & Changing Tubes

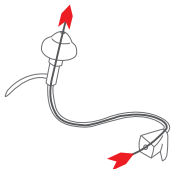
Use a soft cloth to wipe your Simple Ear after use to remove any particles or moisture. The Cleaning Tool is used to remove debris / wax from the sound tubing and earbud.



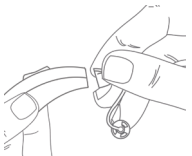
1. To remove tubes gently rotate the sound tubing holding the instrument firmly.



2. Pull sound tubing from the the Simple Ear device.

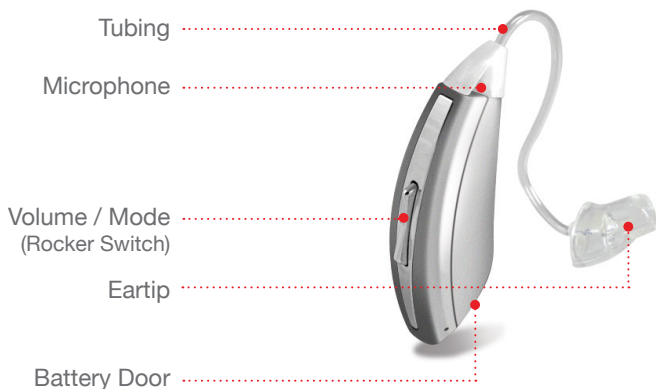


3. To clean, insert the cleaning tool through the nose cone end. Thread all the way through the tubing & eartip.



4. To reassemble or change sound tubing simply line up and push tubing onto brass coupler until it snaps into place.

# Identifying your Simple Ear



visit us online at [www.simpleear.com](http://www.simpleear.com)



simple ear™

hear better. be your best.



# ATTENTION

## DO YOU NEED ADDITIONAL HELP?

Please do not return this product to the store.

If you need installation assistance, replacement parts,  
or have questions regarding our warranty,  
please contact us at:

[www.simpleear.com](http://www.simpleear.com)

Simple Ear  
5021 Vernon Avenue, #169  
Minneapolis, MN 55436

Simple Ear is trademarked  
Made in the USA